

Being Greek: *Shepherd*

GREEK LIFE IMPROVES GPAS & EXCEEDS ALL MEN'S AND WOMEN'S AVERAGE

The office of Greek Affairs is once again rising above the cumulative GPAs of the All Men's and All Women's averages on Shepherd's Campus! Not only that, but both Sororities and Fraternities have increased their cumulative GPAs from the Fall 2015 to the Spring 2016 semester. The all sorority GPA increased from a 3.02 to a 3.07 this has them rise above the Shepherd University All-Women's GPA of a 2.68. The Fraternities increased from a 2.85 to a 2.92 causing them to rise above the All-Men's average of 2.45. Awesome work Greeks, keep working hard!

INSIDE THIS ISSUE

GPA's Increase.....	1
Spotlight on	2
Alumni Spotlight...	3
Social Greeks through the years..	4
Updates and events....	5

FEBRUARY SPOTLIGHTS



Fraternity Spotlight...

Nathan Borowski

Best part about Greek

Life: Being more involved on campus and creating connections

Positions Held: No previous positions held, so wish me luck!

Major: Business Administration, May 2018

Favorite Part about Greek

Life: Being more involved on

campus and creating connections

Goal as President:

Improve recruitment to get more new members.

Hidden Talent: People say I am a good dancer, and I accept the compliment

Favorite Greek Memory:

Lip syncing Justin Timberlake for skits in the Fall

“My favorite part about Greek life is the friendships and bonds that I’ve gained within AST as well as the other Greek life members. I feel as though I have gained life long friends throughout all of Greek Life and a home away from home.” - Kelly Schevitz, Alpha Sigma Tau President

SORORITY SPOLIGHT...

KELLY SCHEVITZ

Major: Recreation & Leisure with a concentration in Therapeutic Recreation, December 2016

Positions held: Nominations Chair, Director of New Member Education, Vice President of Organization Development, President

Goal as President: One of my goals as president of Alpha Sigma Tau is to keep our chapter working to reach our fullest potential on campus and through nationals in both aspects of sisterhood and business. I want Alpha Sigma Tau keep growing as much as possible throughout campus and show campus the best that we can be.

Best memory in Greek Life so far: My favorite memory of Greek life at Shepherd is Relay for Life each year because Greek life really comes together and supports the American Cancer Society and each organization puts together all that they can to make Relay for Life fun and exciting as well as a good impression of Greek Life as a whole on campus.

Favorite Quote: “Never regret something that once made you smile.”



FACULTY/STAFF ADVISOR SPOTLIGHT:

BARBARA KANDALIS

What chapter do you advise? Delta Zeta

Were you a part of a Greek organization?

Yes! I was a Delta Zeta at Shepherd and I pledged in 1989. Being a Delta Zeta and part of the Greek community helped me develop lifelong friendships in addition to being a huge support system for me to succeed in my academics.

Why did you decide to be an advisor? I

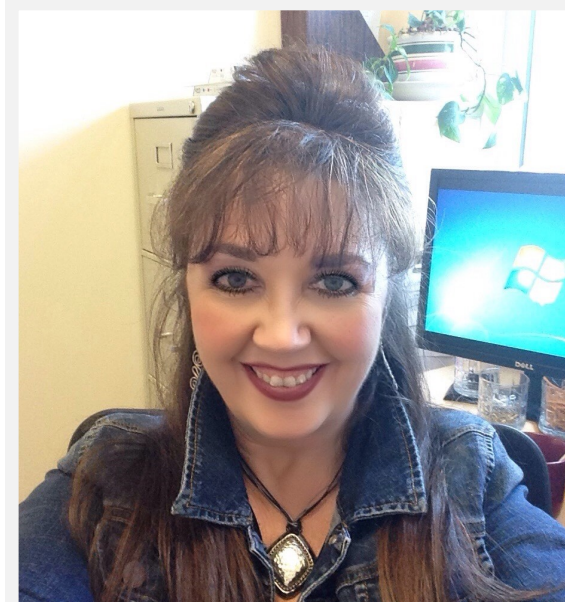
decided to be an advisor because I want to support the chapter and be someone that is a constant, someone they know will always be there for whatever they need.

What is your favorite part of being an

advisor? My favorite part of being an advisor is that I get to see them develop and grow the chapter in addition to being amazing role models for all new members each semester. It's a family!

What position do you have at Shepherd

University? My position at Shepherd is to give administrative support to the Dean of the School of Education and Professional Studies. Dr. Hicks is very supportive of my advisory role with Delta Zeta as well as my roles as a SAVA Advocate for Student Affairs.



SOCIAL GREEKS THROUGH THE YEARS...

1950s— EARLY 2000s



1950s



1960s



1970s



1980s



1990s



2003

UPDATES AND EVENTS

Upcoming Services Opportunities and Events:

February

Anti-Hazing Week

February 8-12, look out for various programs on campus

Anti-Hazing Workshop:

Shepherd Doesn't Haze

February 9, 8:30-9:30 P.M.,
Erma Ora Byrd

Pancake Breakfast Relay for Life

February 20, 9A.M-
1P.M., War Memorial
Building, Shepherdstown

Valentine's Day Spaghetti Dinner, Relay for Life

February 11, 5:00-8:00
P.M., Christ Reformed
Church

GREEK LIFE TO PARTAKE IN ANTI-HAZING WORKSHOP

The week of February 8-12
Will be the week that
Shepherd recognizes their
efforts against anti-hazing.
Each Greek chapter is doing
an outreach to the
community to bring
awareness to this concern.
In addition, the Office of
Greek Affairs will be doing
a kick off event on February
9, 2016. The program will

focus on reasons
understanding hazing and
how to prevent it. Be on the
look out for more
information pertaining this
event.

GO GREEK
GO GREEK

FIND US ON RAMPULSE

Have you been on RamPulse lately? It is the best place for the Shepherd's community to be in the know of what is happening on Campus. Join the Greek Affairs organization page by visiting the link below, and clicking **join** organization. Don't forget to download the mobile app "corq" to access RamPulse on the go!

<http://shepherd.collegiatelink.net/organization/greek>

GREEK AFFAIRS OFFICE UPDATES

Check out the newly designed Greek Affairs webpage.

www.shepherd.edu/greek

Visit us in the Student Center, Suite 216

jflocco@shepherd.edu / cwest@shepherd.edu

(P) 304-876-5453 / (P) 304-876-5402