

Shepherd University Academic Affairs Data 2011-2015

A. Students by Residency

- Table 1. Paid student FTE by Residency, student FTE by residency, headcount by residency
- Paid student FTE by residency, Fall 2011 – Fall 2015*
 - Student FTE by residency, Fall 2011 – Fall 2015*
 - Student headcount by residency, Fall 2011 – Fall 2015*

B. Undergraduate Students and Faculty

- Table 2. Faculty FTE
- Table 3. Baccalaureate Majors per Department and Majors per Full-Time Faculty
- Majors per Department, Fall 2015*
 - Mean Number of Majors by Department, Fall 2011 - Fall 2015*
 - Change in Ratio of Majors to FT Faculty, Fall 2011 - Fall 2015*
 - Mean Ratios of Majors to FT Faculty, Fall 2011 - Fall 2015*
- Table 4. RBA Majors
- Table 5. Minors by Department
- Minors by Department, Fall 2015*
 - Mean Number of Minors by Department, Fall 2011 - Fall 2015*
- Table 6. Teacher Education Concentrations
- Students in Teacher Education Concentrations, Fall 2015*
 - Mean Numbers of Students in Teacher Education Concentrations, Fall 2011 – Fall 2015*
- Table 7. Baccalaureate Majors per Department and Teacher Education Students by Department of Concentration Advisement
- Total Majors and Teacher Education Students, Fall 2015*
 - Mean Totals of Majors and Teacher Education Students, Fall 2011 – Fall 2015*
- Table 8. FTE Student to FTE Faculty Ratios
- Change in Ratios(FTE Students: FTE Faculty), 2011-2015*
 - Mean Ratios (FTE Students: FTE Faculty), 2011-2015*
- Table 9. Student FTE Generated by Full-Time Faculty to Full-Time Faculty FTE Ratios
- Change in FTE Ratios(FTE Students: FTE Faculty) 2011-2015*
 - Mean FTE Ratios(FTE Students: FTE Faculty) 2011-2015*
- Table 10. Student FTE Generated by Part-Time Faculty to Part-Time Faculty FTE Ratios
- Change in FTE Ratios(FTE Students: FTE Faculty) 2011-2015*
 - Mean FTE Ratios(FTE Students: FTE Faculty) 2011-2015*
- Table 11. Student-to-Faculty FTE Ratios in Lower Level Courses
- Change in Student FTE to Faculty FTE Ratios in Lower Level Courses, 2011-2015*
 - Mean Student FTE to Faculty FTE Ratios in Lower Level Courses, 2011-2015*
- Table 12. Student-to-Faculty FTE Ratios in Upper Level Courses
- Change in Student FTE to Faculty FTE Ratios in Upper Level Courses, 2011-2015*

- b. *Mean Student FTE to Faculty FTE Ratios in Upper Level Courses, 2011-2015*
- Table 13. Graduates from Baccalaureate Programs
 - a. *Average Number of Baccalaureate Degrees by Major, 2010-2011 to 2014-2015*
 - b. *Baccalaureate Graduates in 2014-2015*
- Table 14. SCH per FTE faculty, for non-General Studies / Core Curriculum courses
 - a. *Overall rank, Fall 2015, non-GS/CC courses*
 - b. *Overall rank, Fall 2011-2015, non-GS/CC courses*
- Table 15. SCH per FTE faculty, for General Studies / Core Curriculum courses
 - a. *Overall rank, Fall 2015, GS/CC courses*
 - b. *Overall rank, Fall 2011-2015, GS/CC courses*
- Table 16. Core Curriculum courses by time of day
 - a. *Core Curriculum courses by time of day, Monday-Thursday*
 - b. *Core Curriculum courses by time of day, Friday, weekdays and Saturday*
- Table 17. Core Curriculum courses offered in standard timeslots, weekdays
 - a. *CC courses offered in standard timeslots, weekdays*
- Table 18. Online and hybrid courses, Fall 2011 – Fall 2015
 - a. *Hybrid and online courses, Fall 2011 – Fall 2015*
 - b. *Percentages of hybrid and online courses, Fall 2011 – Fall 2015*

C. Graduate Students and Faculty

- Table 19. Students Enrolled in Graduate Programs
- Table 20. Graduates from Graduate Programs
- Table 21. Graduate Student to Faculty FTE Ratios
 - a. *Mean Change in FTE Ratios (Student FTE: Faculty FTE) for Graduate Courses, 2011-2015*
 - b. *Mean FTE Ratios (Student FTE: Faculty FTE) for Graduate Courses, 2011-2015*

D. Shepherd University Student Demographic Data

- Table 22. Degree Targets
- Table 23. Mean ACT and ACT Equivalent Scores by Residency
- Table 24. Status by Residency, Five-Year Trends
- Table 25. ACT and ACT Equivalent Scores by Residency
- Table 26. Class Level by Residency
- Table 27. Retention of Fall 2014 Freshman Cohort by Residency
- Table 28. Graduation of Fall 2009 Freshman Cohort by Residency
- Table 29. Student Headcount by Registration Type
- Table 30. Student FTE by Registration Type
- Table 31. Student Headcount by Race and Ethnicity

E. Shepherd University Global Information

- Table 32. Shepherd University FTE by Department and Instructor

This Acrobat file has been bookmarked for your convenience. To see bookmarks, click on the “Bookmarks” tab on the left side of the Acrobat window.

Table 1a. Paid student FTE by residency

Residency	SU					2011-2015
	Fall 2011	Fall 2012	Fall 2013	Fall 2014	Fall 2015	% Change
Total	3844.65	3775.15	3645.28	3463.82	3282.15	-14.6%
In-state	2336.75	2305.68	2227.17	2130.63	2032.13	-13.0%
Out-of-state	1507.90	1469.47	1418.12	1333.18	1250.02	-17.1%

Table 1b. Student FTE by residency

Residency	SU					2011-2015
	Fall 2011	Fall 2012	Fall 2013	Fall 2014	Fall 2015	% Change
Total	3836.55	3773.55	3642.09	3457.76	3282.09	-14.5%
In-state	2332.48	2304.43	2224.27	2127.23	2028.27	-13.0%
Out-of-state	1504.07	1469.12	1417.82	1330.53	1253.82	-16.6%

Table 1c. Student headcount by residency

Residency	SU					2011-2015
	Fall 2011	Fall 2012	Fall 2013	Fall 2014	Fall 2015	% Change
Total	4449	4388	4275	4119	3913	-12.0%
In-state	2672	2651	2592	2511	2361	-11.6%
Out-of-state	1777	1737	1683	1608	1552	-12.7%

General Explanation/Definitions.

1. One student *FTE* (full-time equivalent) equals 15 credit hours for baccalaureate students and 12 credit hours for graduate students.
2. The **% change** is the difference between the most recent data and the first column of data, divided by the first column of data.
3. Numbers are for undergraduate and graduate students combined.

Table 2. Faculty FTE

Department						2011-2015	
	Fall 2011	Fall 2012	Fall 2013	Fall 2014	Fall 2015	Mean	% Change
CAT	17.97	15.68	14.46	13.75	12.20	14.81	-32.1%
MCOM	10.25	8.75	7.75	7.25	7.50	8.30	-26.8%
ENGL	22.15	22.73	24.34	21.89	19.32	22.09	-12.8%
HIST	11.25	11.74	11.07	9.82	10.31	10.84	-8.4%
MUSC	14.26	14.96	13.32	14.07	15.04	14.33	5.5%
<i>A&H</i>	75.88	73.86	70.94	66.78	64.37	70.37	-15.2%
ACCT	3.25	3.25	3.25	3.50	3.25	3.30	0.0%
BADM	12.67	10.50	10.41	11.83	10.37	11.16	-18.2%
ECON / ECFN	4.75	6.24	6.25	6.50	5.74	5.90	20.8%
PSCI	5.71	5.50	7.25	5.25	4.75	5.69	-16.8%
PSYC	6.33	8.75	9.25	9.65	9.87	8.77	55.9%
SOGE	8.98	8.96	9.99	9.50	9.00	9.29	0.2%
SOWK	3.00	3.17	3.42	3.42	3.17	3.24	5.7%
<i>B&SS</i>	44.69	46.37	49.82	49.65	46.15	47.34	3.3%
EDUC	12.35	10.87	9.86	13.33	12.60	11.80	2.0%
HPER	20.89	20.74	23.75	22.57	22.24	22.04	6.5%
NURS	7.07	8.08	6.83	7.67	7.33	7.40	3.7%
<i>E&PS</i>	40.31	39.69	40.44	43.57	42.17	41.24	4.6%
BIOL	13.23	11.66	11.50	9.92	11.12	11.49	-15.9%
CHEM	7.83	7.51	6.91	6.53	6.42	7.04	-18.0%
CSME	19.25	16.75	17.57	16.91	16.56	17.41	-14.0%
ENVS / ENPS	8.07	8.78	7.08	7.42	6.33	7.54	-21.6%
<i>NS&M</i>	48.38	44.70	43.06	40.78	40.43	43.47	-16.4%
Stretch English	2.33	2.50	2.17	1.83	1.67	2.10	-28.3%
Stretch Math	2.67	3.00	2.83	2.83	2.83	2.83	6.0%
<i>Stretch</i>	5.00	5.50	5.00	4.66	4.50	4.93	-10.0%
Shepherd University	214.26	210.12	209.26	205.44	197.62	207.34	-7.8%

General Explanation/Definitions.

1. One faculty **FTE** (full-time equivalent) equals 12 hours of instructional responsibility. Contemporary Art and Theater's Fall 2014 FTE of 13.75 accounts for 165.00 hours of instruction (12*13.75) .
2. The **mean** is the average for five years.
3. The **% change** is the difference between the most recent and the earliest fall semester FTE's divided by the earliest fall FTE. For example, for Contemporary Art and Theater in Fall 2014, this would be (13.75 - 18.12) / 18.12.
4. Numbers include undergraduate instruction only.

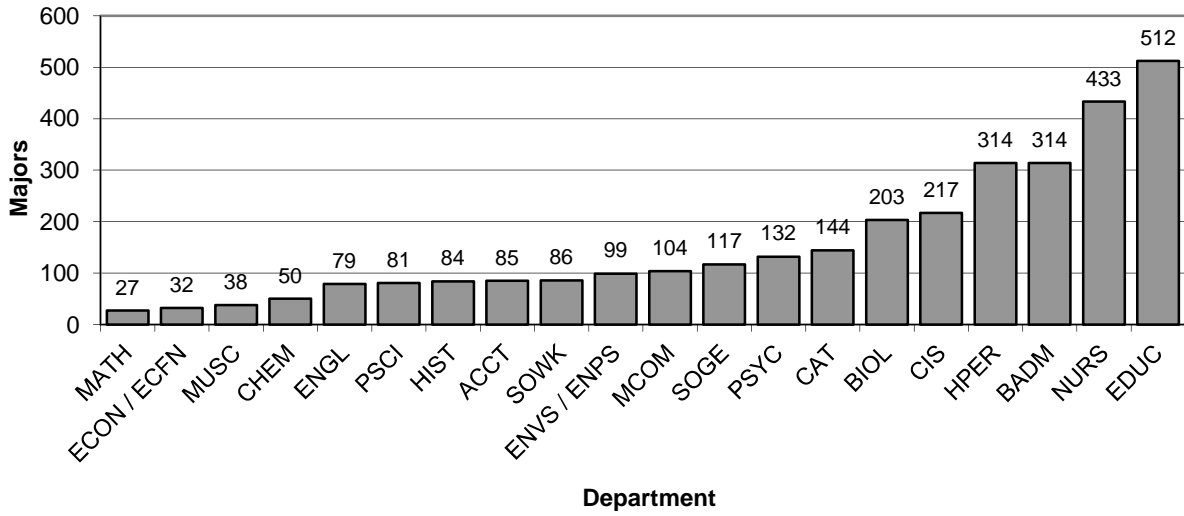
Table 3. Baccalaureate Majors per Department and Majors per Full-Time Faculty

Department	Fall 2011			Fall 2012			Fall 2013			Fall 2014			Fall 2015			Fall 2011 -2015		
	N	FT Fac	N/FT Fac	N	FT Fac	N/FT Fac	N	FT Fac	N/FT Fac	N	FT Fac	N/FT Fac	N	FT Fac	N/FT Fac	Mean N/FT Fac	Change	Percentage Change in Majors
CAT	222	9	24.7	195	10	19.5	172	10	17.2	160	10	16.0	144	9	16.0	18.7	-8.67	-35.1%
MCOM	135	4	33.8	111	5	22.2	124	5	24.8	125	4	31.3	104	4	26.0	27.6	-7.75	-23.0%
ENGL	117	12	9.8	118	12	9.8	102	14	7.3	93	13.5	6.9	79	13.5	5.9	7.9	-3.90	-32.5%
HIST	92	6	15.3	109	7	15.6	114	7	16.3	104	6	17.3	84	7	12.0	15.3	-3.33	-8.7%
MUSC	56	7	8.0	56	9	6.2	48	8	6.0	39	8	4.9	38	8	4.8	6.0	-3.25	-32.1%
<i>A&H</i>	622	38	16.4	589	43	13.7	560	44	12.7	521	41.5	12.6	449	41.5	10.8	13.2	-5.55	-27.8%
ACCT	85	4	21.3	90	4	22.5	86	3	28.7	84	3	28.0	85	3	28.3	25.8	7.08	0.0%
BADM	353	8	44.1	345	7	49.3	339	8	42.4	316	8	39.5	314	7	44.9	44.0	0.73	-11.0%
ECON / ECFN	26	5	5.2	34	5	6.8	42	5	8.4	32	5	6.4	32	5	6.4	6.6	1.20	23.1%
PSCI	99	5	19.8	98	6	16.3	80	5	16.0	72	5	14.4	81	5	16.2	16.5	-3.60	-18.2%
PSYC	187	5	37.4	184	5	36.8	166	6	16.0	162	6	27.0	132	6	22.0	27.8	-15.40	-29.4%
SOGE	139	5.5	25.3	142	5.5	25.8	141	6.5	21.7	146	6.5	22.5	117	6.5	18.0	22.6	-7.27	-15.8%
SOWK	87	3	29.0	107	3	35.7	105	3	35.0	82	3	27.3	86	3	28.7	31.1	-0.33	-1.1%
<i>BASS</i>	976	35.5	27.5	1000	35.5	28.2	959	36.5	26.3	894	36.5	24.5	847	35.5	23.9	26.1	-3.63	-13.2%
EDUC	640	12.5	51.2	613	14.5	42.3	564	14.5	38.9	539	14.5	37.2	512	13.5	37.9	41.5	-13.27	-20.0%
HPER	322	8.5	37.9	307	9.5	32.3	304	8.5	35.8	314	8.5	36.9	314	8.5	36.9	36.0	-0.94	-2.5%
NURS	429	9	47.7	486	10	48.6	490	11	44.5	454	9	50.4	433	11	39.4	46.1	-8.30	0.9%
<i>E&PS</i>	1391	30	46.4	1406	34	41.4	1358	34	39.9	1307	32	40.8	1259	33	38.2	41.3	-8.22	-9.5%
BIOL	213	8.5	25.1	210	8.5	24.7	222	9.5	23.4	204	9.5	21.5	203	9.5	21.4	23.2	-3.69	-4.7%
CHEM	59	4.75	12.4	70	4.75	14.7	63	5.75	11.0	52	5.75	9.0	50	5.75	8.7	11.2	-3.73	-15.3%
CIS	209	11	21.3	211	11	21.5	190	11	20.2	193	11	19.6	217	11	22.2	18.7	0.91	3.8%
MATH	25		25	32		23	27		0.00	8.0%								
ENVS / ENPS	146	7	20.9	140	7	20.0	115	6	19.2	107	6	17.8	99	6	16.5	18.9	-4.36	-32.2%
<i>NS&M</i>	652	31.25	20.9	656	31.25	21.0	622	32.25	19.3	579	32.25	18.0	596	32.25	18.5	19.5	-2.38	-8.6%
Shepherd University	3641	134.8	27.0	3651	143.8	25.4	3499	146.8	23.8	3301	142.3	23.2	3151	142.3	22.2	24.3	-4.87	-13.5%

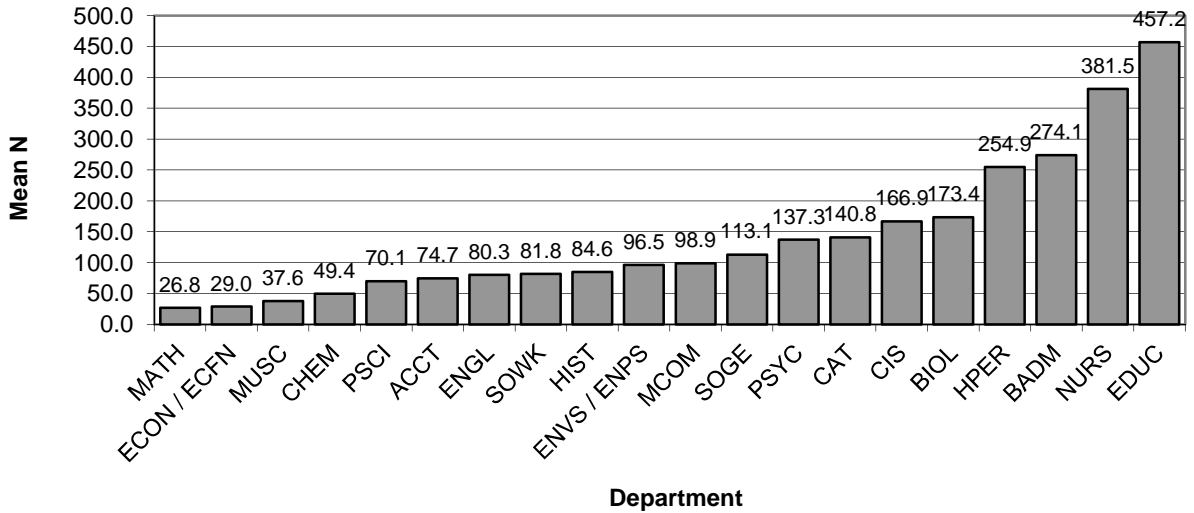
General Explanation/Definitions.

1. **N** is the number of undergraduate students in degree programs offered by the department. This includes first and second majors.
2. **FT Fac** is the number of full-time faculty in the department including visiting faculty. This is generally a count of "bodies" from the faculty list produced by the VPAA's office. Exceptions are where there is a permanent contractual specification of less than full-time; released time is not counted and neither is leave, unless there is a full-time replacement, because those are unlikely to affect the number of majors. Herendeen, Beard, Benedict, Legreid, Hicks, Renninger, Toole, Nolan, and Cantrell are all counted as *half* positions. Warburton is counted as a 75% position. R. Stevens is not counted here, as he works exclusively with graduate students.
3. The **N/FT Fac** is the ratio of students to faculty.
4. The **mean N/FT Fac** is the average N/FT Fac for the years shown.
5. The **change** is the current year's N/FT Fac minus the first year's N/FT Fac.
6. The **percentage change in majors** is the difference between the current year's number of majors and the first year's number of majors, divided by the first year's number of majors.

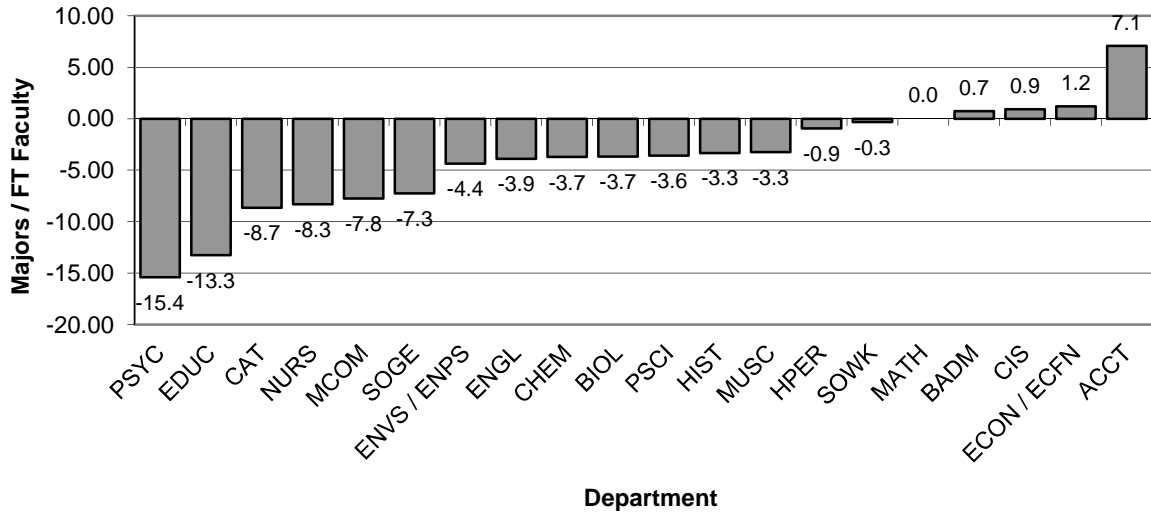
Graph 3A: Majors per Department, Fall 2015
(from Table 3)



Graph 3B: Mean Number of Majors by Department, Fall 2011 - Fall 2015
(from Table 3)



Graph 3C: Change in Ratio of Majors to FT Faculty, Fall 2011 - Fall 2015
(from Table 3)



Graph 3D: Mean Ratios of Majors to FT Faculty, Fall 2011 - Fall 2015
(from Table 3)

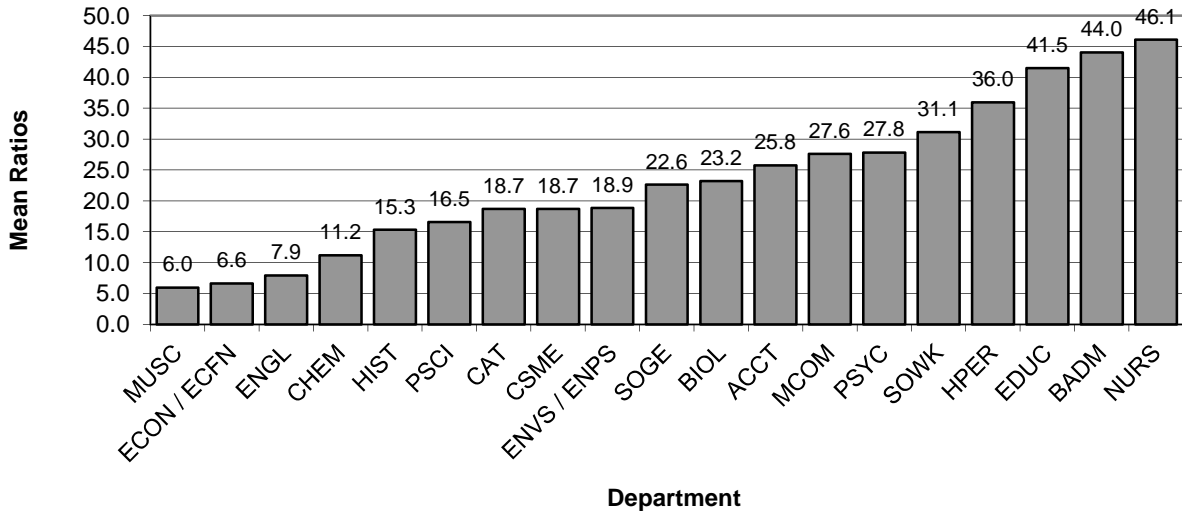


Table 4. RBA majors

RBA	2011	2012	2013	2014	2015
Headcount	148	150	135	272	147
Full-time	73	91	59	163	46
Non-credit	1				1
Part-time	74	59	76	109	100
FTE	96.67	104.40	82.77	196.20	77.87
Average SCH per semester	9.80	10.44	9.20	10.82	7.95
Average age of majors	37.3	36.6	37.1	31.5	39.5
Graduates	123	102	91	111	

Headcount, FTE, average SCH per semester, and average age are calculated for Fall semester of the listed academic year.

Graduates are counted from the fall of the listed year through the summer of the following year. Numbers of graduates are not available for the most recent year listed.

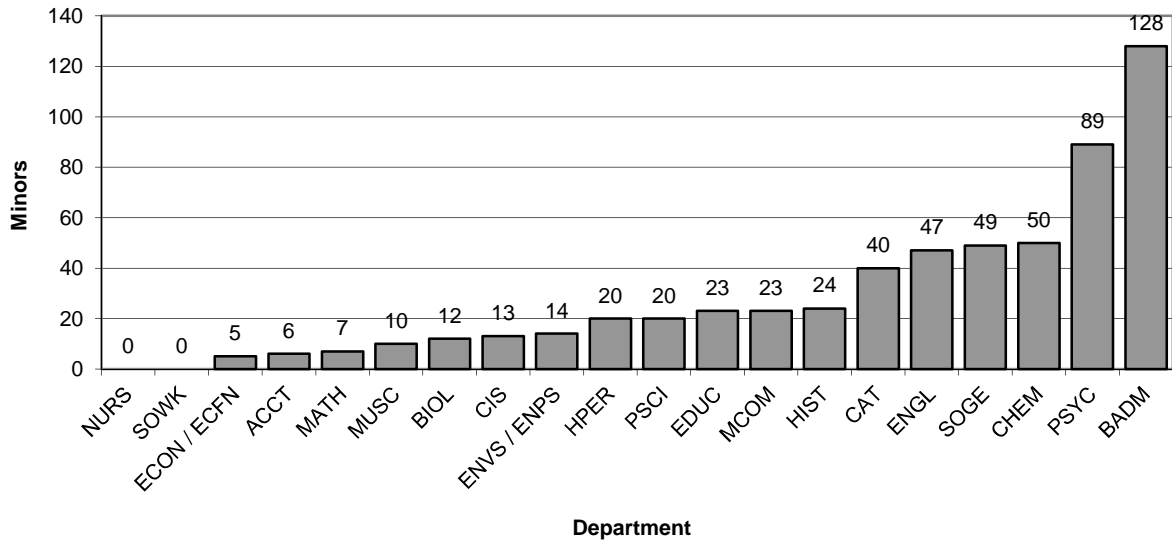
Table 5. Minors by Department

Department	Fall 2011		Fall 2012		Fall 2013		Fall 2014		Fall 2015		2011-2015		
	N	N Change	N	N Change	N	N Change	N	N Change	N	N Change	Mean N	Change	Mean Change
CAT	37	3	41	4	34	-7	35	-6	40	6	37.4	3.00	0.00
MCOM	23	-14	19	-4	26	7	22	3	23	-3	22.6	0.0	-2.20
ENGL	87	16	62	-25	59	-3	64	2	47	-12	63.8	-40.0	-4.40
HIST	18	-4	18	0	21	3	26	8	24	3	21.4	6.0	2.00
MUSC	15	2	10	-5	15	5	16	6	10	-5	13.2	-5.0	0.60
<i>A&H</i>	180	3	150	-30	155	5	163	13	144	-11	158.4	-36.0	-4.00
ACCT	10	-4	6	-4	8	2	17	11	6	-2	9.4	-4.0	0.60
BADM	110	7	107	-3	126	19	120	13	128	2	118.2	18.0	7.60
ECON / ECFN	31	3	19	-12	18	-1	10	-9	5	-13	16.6	-26.0	-6.40
PSCI	17	4	26	9	28	2	21	-5	20	-8	22.4	3.0	0.40
PSYC	43	-6	54	11	73	19	72	18	89	16	66.2	46.0	11.60
SOGE	40	-3	41	1	32	-9	44	3	49	17	41.2	9.0	1.80
SOWK	0	0	0	0	0	0	0	0	0	0	0.0	0.0	0.00
<i>BASS</i>	251	1	253	2	285	32	284	31	297	12	274.0	46.0	15.60
EDUC	34	-1	25	-9	24	-1	20	-5	23	-1	25.2	-11.0	-3.40
HPER	34	1	27	-7	24	-3	24	-3	20	-4	25.8	-14.0	-3.20
NURS	0	0	0	0	0	0	0	0	0	0	0.0	0.0	0.00
<i>E&PS</i>	68	0	52	-16	48	-4	44	-8	43	-5	51.0	-25.0	-6.60
BIOL	7	3	15	8	16	1	10	-5	12	-4	12.0	5.0	0.60
CHEM	59	3	68	9	55	-13	46	-22	50	-5	55.6	-9.0	-5.60
CIS	10	2	15	5	11	-4	5	-10	13	2	10.8	3.0	-1.00
MATH	15	3	12	-3	11	-1	9	-3	7	-4	10.8	-8.0	-1.60
ENVS / ENPS	20	6	21	1	16	-5	11	-10	14	-2	16.4	-6.0	-2.00
<i>NS&M</i>	111	17	131	20	109	-22	81	-50	96	-13	105.6	-15.0	-9.60
Shepherd University	610	21	586	-24	597	11	572	-14	580	-17	589.0	-30.0	-4.60

General Explanation/Definitions.

1. **N** is the number of students in minor programs offered by the department.
2. The **N change** is the difference in the number of students in consecutive years.
3. The **mean N** is the mean number of students over the years represented (five years).
4. The **mean change** is the sum of the annual changes divided by the number of annual changes.
5. Women's Studies is not attached to any department. There were twelve WMST minors in Fall 2015.
6. Appalachian Studies is not attached to any department. There were eleven APPN minors in Fall 2015.

Graph 5A: Minors by Department, Fall 2015
(from Table 5)



Graph 5B: Mean Number of Minors by Department, Fall 2011 - Fall 2015
(from Table 5)

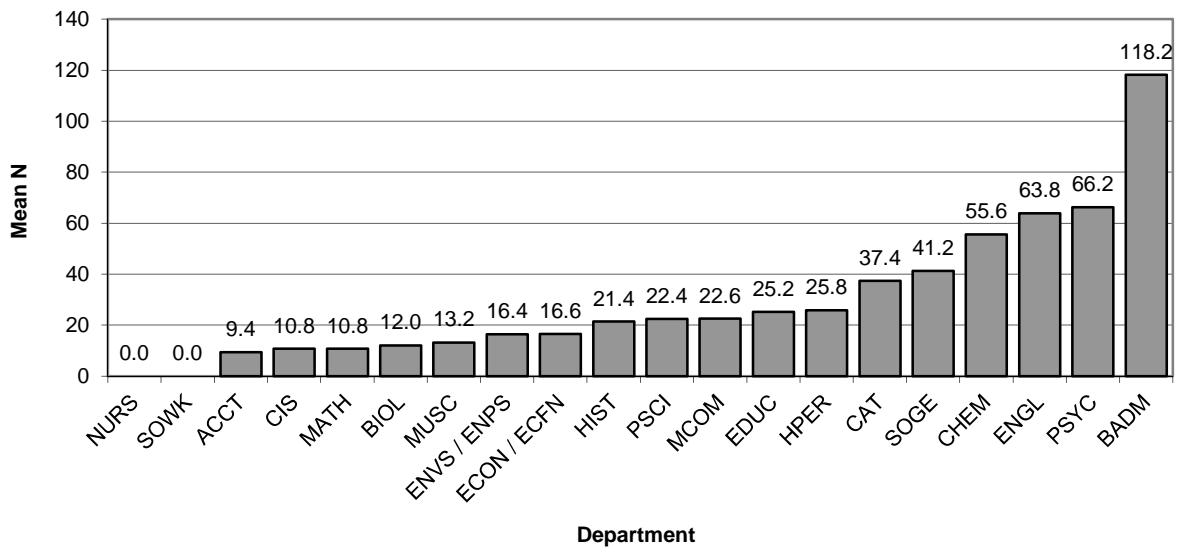


Table 6. Teacher Education Concentrations

Department	Teaching Concentration	Fall 2011	Fall 2012	Fall 2013	Fall 2014	Fall 2015	Mean	Change	Advising F15	
									Fac	Majors
CAT	Art	34	33	29	27	22	29.0	-12	9	44
Biology	Biology	5	5	7	5	2	4.8	-3	9.5	4
Business Admin / FACS	Business, FACS	5	6	3	4	7	5.0	2	7	14
Biology	Chemistry	3	7	4	3	1	3.6	-2	9.5	2
Education	Elementary	290	266	269	254	225	260.8	-65	13.5	450
English	English	48	60	47	49	49	50.6	1	13.5	98
Biology	General Science	10	12	8	6	3	7.8	-7	9.5	6
HPERS	Health, Phys. Ed.	111	119	107	83	68	97.6	-43	11	136
CSME	Mathematics	21	35	37	36	16	29.0	-5	11	32
Music	Music	95	88	78	76	84	84.2	-11	8	168
Education	Social Studies	66	71	59	61	59	63.2	-7	13.5	118
English	Spanish	7	5	5	2	4	4.6	-3	13.5	8
Education	C & I	21	20	18	14	22	19.0	1	13.5	44

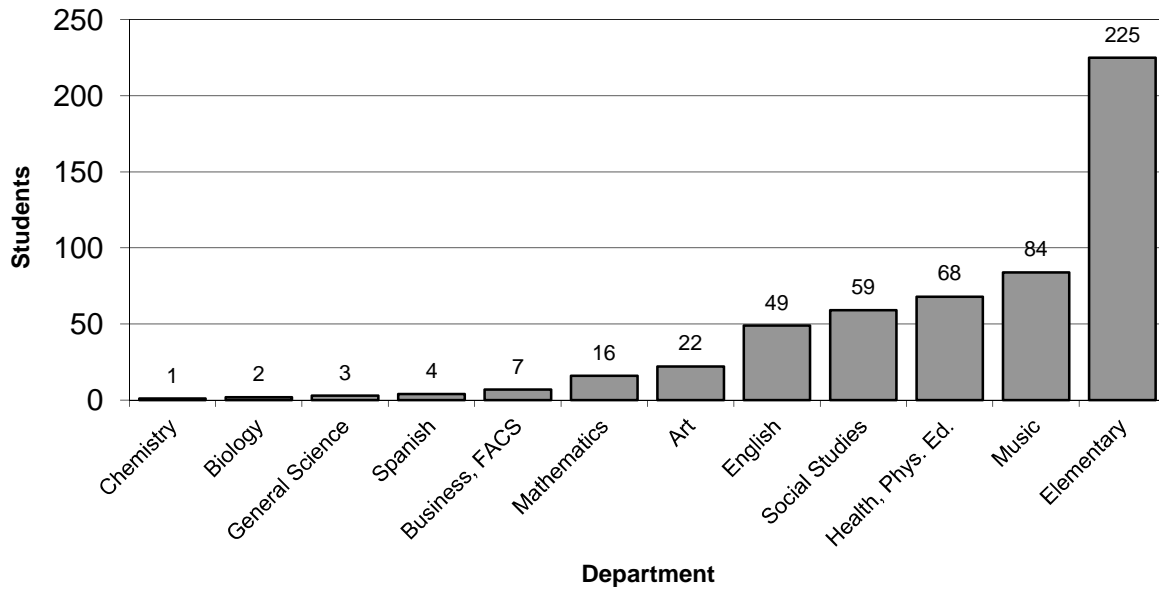
Note that the C & I students are included both in the Education department and in the departments of their concentrations. The secondary education majors are included only in the departments of their concentrations.

The Advising F15 "majors" is the number of students in the Fall 2015 column multiplied by 2, as Joe Simplicio specified starting with the 2003 reports. "Fac" is the number of full-time faculty in the department in which the concentration is housed.

General Explanation/Definitions.

1. A **concentration** is a teaching specialty such as English or Biology. The 22 C&I graduate students' concentrations have been added to their departments. Of the C&I students, six were Individualized and eight were in Special Education.
2. The **department** is the unit responsible for the concentration. In the case of the social studies and library science concentrations, courses are provided by four departments with the education department providing oversight/coordination/advisement.
3. The numbers for each semester are the number of declared students in each concentration. Any given student may have more than one concentration.
4. The **mean** is the average of the annual number of students in a given concentration.
5. The **change** is the number of students in the current year minus the number of students in the first year.

Graph 6A. Students in Teacher Education Concentrations, Fall 2015
(from Table 6)



Graph 6B. Mean Numbers of Students in Teacher Education Concentrations, Fall 2011-Fall 2015
(from Table 6)

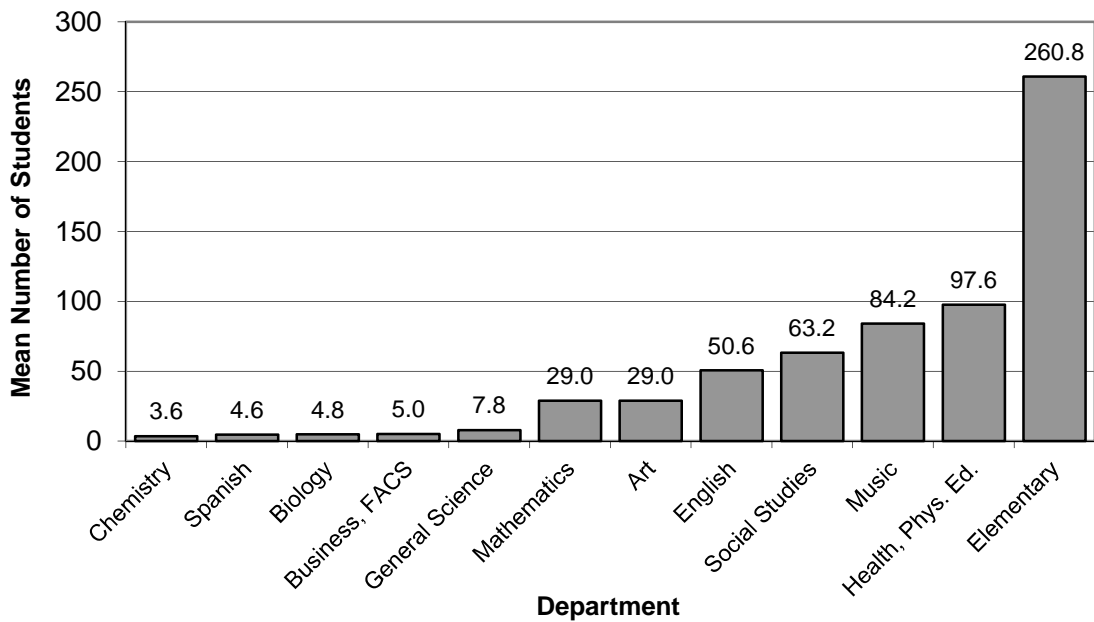


Table 7. Baccalaureate Majors per Department and Teacher Education Students by Department of Concentration Advisement

Department	Fall 2011			Fall 2012			Fall 2013			Fall 2014			Fall 2015			Fall 2011-15		
	N	Secondary Education and C&I	Total	N	Secondary Education and C&I	Total	N	Secondary Education and C&I	Total	N	Secondary Education and C&I	Total	N	Secondary Education and C&I	Total	Mean N	Mean Secondary Education	Mean Total
CAT	222	34	256	195	33	228	172	22	194	160	22	182	144	22	166	178.6	26.6	205.2
MCOM	135	0	135	111	0	111	124	0	124	125	0	125	104	0	104	119.8	0.0	119.8
ENGL	117	55	172	118	65	183	102	53	155	93	53	146	79	53	132	101.8	55.8	157.6
HIST	92	0	92	109	0	109	114	0	114	104	0	104	84	0	84	100.6	0.0	100.6
MUSC	56	95	151	56	88	144	48	84	132	39	84	123	38	84	122	47.4	87.0	134.4
<i>A&H</i>	622	184	806	589	186	775	560	159	719	521	159	680	449	159	608	548.2	169.4	717.6
ACCT	85	0	85	90	0	90	86	0	86	84	0	84	85	0	85	86.0	0.0	86.0
BADM	353	5	358	345	6	351	339	7	346	316	7	323	314	7	321	333.4	6.4	339.8
ECON / ECFN	26	0	26	34	0	34	42	0	42	32	0	32	32	0	32	33.2	0.0	33.2
PSCI	99	0	99	98	0	98	80	0	80	72	0	72	81	0	81	86.0	0.0	86.0
PSYC	187	0	187	184	0	184	166	0	166	162	0	162	132	0	132	166.2	0.0	166.2
SOGE	139	0	139	142	0	142	141	0	141	146	0	146	117	0	117	137.0	0.0	137.0
SOWK	87	0	87	107	0	107	105	0	105	82	0	82	86	0	86	93.4	0.0	93.4
<i>BASS</i>	976	5	981	1000	6	1006	959	7	966	894	7	901	847	7	854	935.2	6.4	941.6
EDUC	640	72	712	613	74	687	564	284	848	539	284	823	512	284	796	573.6	199.6	773.2
HPER	322	111	433	307	119	426	304	68	372	314	68	382	314	68	382	312.2	86.8	399.0
NURS	429	0	429	486	0	486	490	0	490	454	0	454	433	0	433	458.4	0.0	458.4
<i>E&PS</i>	1391	183	1574	1406	193	1599	1358	352	1710	1307	352	1659	1259	352	1611	1344.2	286.4	1630.6
BIOL	213	18	231	210	24	234	222	6	228	204	6	210	203	6	209	210.4	12.0	222.4
CHEM	59	0	59	70	0	70	63	0	63	52	0	52	50	0	50	58.8	0.0	58.8
CIS	209	0	209	211	0	211	190	0	190	193	0	193	217	0	217	204.0	0.0	204.0
MATH	25	21	46	25	35	60	32	16	48	23	16	39	27	16	43	26.4	20.8	47.2
ENVS / ENPS	146	0	146	140	0	140	115	0	115	107	0	107	99	0	99	121.4	0.0	121.4
<i>NS&M</i>	652	39	691	656	59	715	622	22	644	579	22	601	596	22	618	621.0	32.8	653.8
Shepherd University	3641	411	4052	3651	444	4095	3499	540	4039	3301	540	3841	3151	540	3691	3448.6	495.0	3943.6

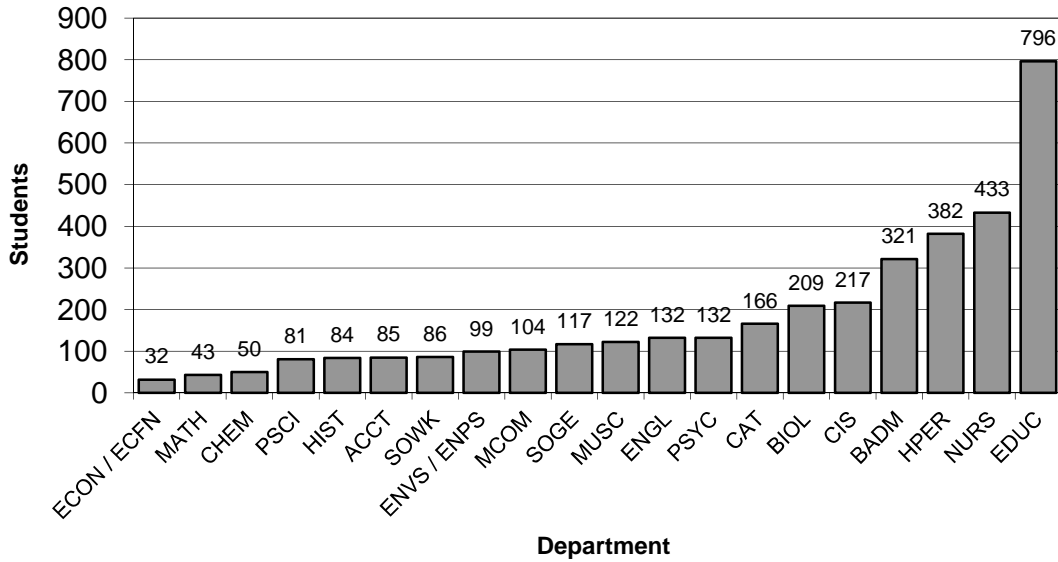
General Explanation/Definitions.

1. **N** is the number of undergraduate students in degree programs offered by the department. This includes first and second majors.
2. **Secondary Education and C&I** is the number of Secondary Education and C&I students with concentrations housed in that department. "Housing" is considered to be in the department if the Secondary Education coordinator for the concentration is in the department. For EDUC, numbers include Secondary Education Social Studies concentrations, and C&I Elementary Education and Social Studies concentrations; baccalaureate Elementary Education majors are not counted here.
3. **Total** is the sum of **N** and **Secondary Education**. Note that, for the EDUC department, this double-counts some students (as listed in the "Secondary Education and C&I" description above), and is therefore not likely to be useful.

Concentration housings are as follows:

- ART / CAT:** Art
- BIOL:** Biology, Chemistry, General Science
- BADM:** Business, FACS
- EDUC:** Social Studies, C&I
- ENGL:** English, Spanish
- HPERS:** Health and Physical Education
- MATH:** Mathematics
- MUSC:** Music

Graph 7a. Total Majors and Teacher Education Students, Fall 2015
(from Table 7)



Graph 7B. Mean Totals of Majors and Teacher Education Students, Fall 2011-Fall 2015
(from Table 7)

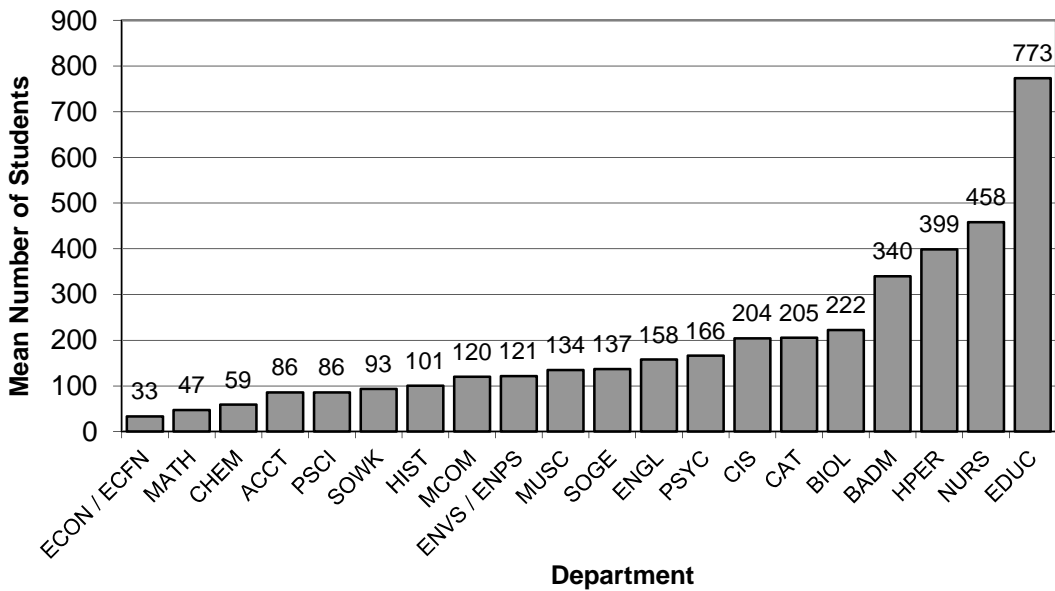


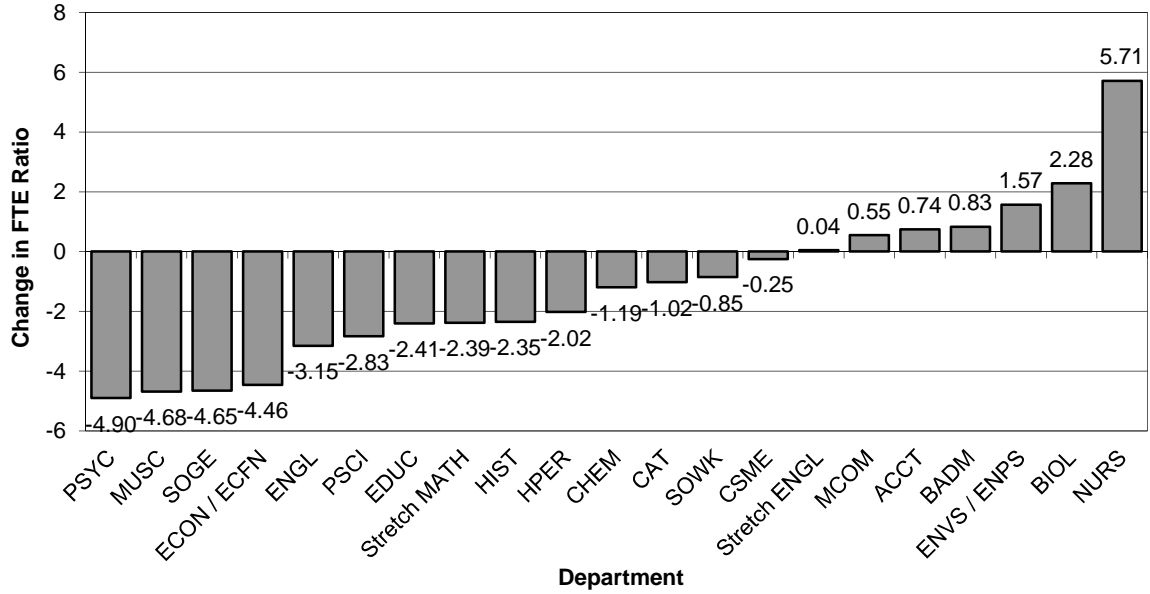
Table 8. FTE Student to FTE Faculty Ratios

Department	Fall 2011		Fall 2012		Fall 2013		Fall 2014		Fall 2015				Fall 2011-15	
	Ratio	Change	Ratio	Change	Ratio	Change	Ratio	Change	F-FTE	S-FTE	Ratio	Change	Mean Ratio	Change in Ratio
CAT	13.89	-0.66	14.18	0.28	13.61	-0.28	13.12	-0.49	12.20	157.00	12.87	-0.25	13.53	-1.02
MCOM	13.07	-1.62	14.31	1.24	13.21	0.14	13.66	0.44	7.50	102.20	13.63	-0.03	13.58	0.55
ENGL	16.76	-0.55	15.39	-1.37	14.13	-2.63	14.04	-0.08	19.32	262.87	13.61	-0.44	14.78	-3.15
HIST	21.69	-1.03	22.62	0.93	20.15	-1.54	18.89	-1.26	10.31	199.40	19.34	0.45	20.54	-2.35
MUSC	12.15	-2.63	10.09	-2.06	9.28	-2.87	7.97	-1.31	15.04	112.37	7.47	-0.50	9.39	-4.68
<i>A&H</i>	<i>15.45</i>	<i>-1.15</i>	<i>15.08</i>	<i>-0.37</i>	<i>13.95</i>	<i>-1.50</i>	<i>13.24</i>	<i>-0.71</i>	<i>64.37</i>	<i>833.84</i>	<i>12.95</i>	<i>-0.29</i>	<i>14.14</i>	<i>-2.49</i>
ACCT	16.62	-1.71	17.72	1.11	18.52	1.91	16.86	-1.67	3.25	56.40	17.35	0.50	17.41	0.74
BADM	16.62	-4.08	18.13	1.51	16.15	-0.47	15.77	-0.38	10.37	180.87	17.44	1.67	16.82	0.83
ECON / ECFN	21.43	-1.26	19.01	-2.43	17.92	-3.51	15.60	-2.32	5.74	97.40	16.97	1.37	18.19	-4.46
PSCI	19.33	-2.20	19.16	-0.17	13.90	-5.43	15.50	1.60	4.75	78.40	16.51	1.00	16.88	-2.83
PSYC	20.14	1.81	17.72	-2.42	17.02	-3.12	15.76	-1.26	9.87	150.40	15.24	-0.52	17.17	-4.90
SOGE	22.20	0.65	22.43	0.23	19.26	-2.95	19.54	0.28	9.00	158.00	17.56	-1.98	20.20	-4.65
SOWK	13.16	-0.25	14.32	1.17	14.31	1.15	12.94	-1.36	3.17	39.00	12.30	-0.64	13.41	-0.85
<i>B&SS</i>	<i>18.86</i>	<i>-1.40</i>	<i>18.84</i>	<i>-0.03</i>	<i>16.86</i>	<i>-2.01</i>	<i>16.32</i>	<i>-0.54</i>	<i>46.15</i>	<i>760.47</i>	<i>16.48</i>	<i>0.16</i>	<i>17.47</i>	<i>-2.39</i>
EDUC	12.19	-1.16	11.93	-0.26	11.68	-0.52	11.35	-0.33	12.60	123.33	9.79	-1.56	11.39	-2.41
HPER	17.32	-0.58	16.46	-0.86	14.43	-2.89	15.06	0.63	22.24	340.27	15.30	0.24	15.72	-2.02
NURS	18.66	-0.43	19.14	0.48	22.77	4.11	25.11	2.34	7.33	178.67	24.38	-0.74	22.01	5.71
<i>E&PS</i>	<i>15.99</i>	<i>-0.64</i>	<i>15.77</i>	<i>-0.22</i>	<i>15.17</i>	<i>-0.82</i>	<i>15.69</i>	<i>0.53</i>	<i>42.17</i>	<i>642.27</i>	<i>15.23</i>	<i>-0.46</i>	<i>15.57</i>	<i>-0.76</i>
BIOL	16.35	-1.41	17.19	0.84	19.03	2.67	17.58	-1.45	11.12	207.20	18.63	1.05	17.76	2.28
CHEM	20.44	-1.79	20.39	-0.05	19.38	-1.06	19.37	-0.01	6.42	123.60	19.25	-0.12	19.77	-1.19
CSME	15.77	-0.33	17.07	1.30	16.19	0.42	15.87	-0.32	16.56	257.00	15.52	-0.35	16.08	-0.25
ENVS / ENPS	15.37	-1.59	16.42	1.05	17.02	1.65	16.49	-0.54	6.33	107.27	16.95	0.46	16.45	1.57
<i>NS&M</i>	<i>16.62</i>	<i>-1.10</i>	<i>17.53</i>	<i>0.91</i>	<i>17.60</i>	<i>0.98</i>	<i>16.96</i>	<i>-0.64</i>	<i>40.43</i>	<i>695.07</i>	<i>17.19</i>	<i>0.23</i>	<i>17.18</i>	<i>0.57</i>
Stretch English	10.42	-0.87	9.92	-0.50	11.30	1.38	9.18	-2.12	1.67	17.47	10.46	1.28	10.26	0.04
Stretch Math	19.73	2.05	17.38	-2.35	20.12	2.74	17.90	-2.21	2.83	49.07	17.34	-0.57	18.49	-2.39
<i>Stretch</i>	<i>15.39</i>	<i>0.01</i>	<i>13.99</i>	<i>-1.40</i>	<i>16.29</i>	<i>2.30</i>	<i>14.48</i>	<i>-1.81</i>	<i>4.50</i>	<i>66.54</i>	<i>14.79</i>	<i>0.31</i>	<i>14.99</i>	<i>-0.60</i>
Shepherd University	16.53	-1.07	16.53	0.01	15.68	-1.04	15.27	-0.41	197.62	2998.19	15.17	-0.10	15.84	-1.35

General Explanation/Definitions.

1. The **ratio** is obtained by dividing the student FTE by the faculty FTE.
2. One faculty **FTE** (full-time equivalent) equals 12 hours of instructional responsibility and one student FTE equals 15 credit hours.
3. The annual **change** is the current year's ratio minus the prior year's ratio.
4. The **mean ratio** is the sum of the annual ratios divided by the number of years for which data are presented (five years).
5. The **change in ratio** is the current year's ratio minus the first year's ratio.
6. Numbers include undergraduate instruction only.

**Graph 8A: Change in Ratios
(FTE Students: FTE Faculty), 2011-2015
(from Table 8)**



**Graph 8B: Mean Ratios
(FTE Students: FTE Faculty), 2011-2015
(from Table 8)**

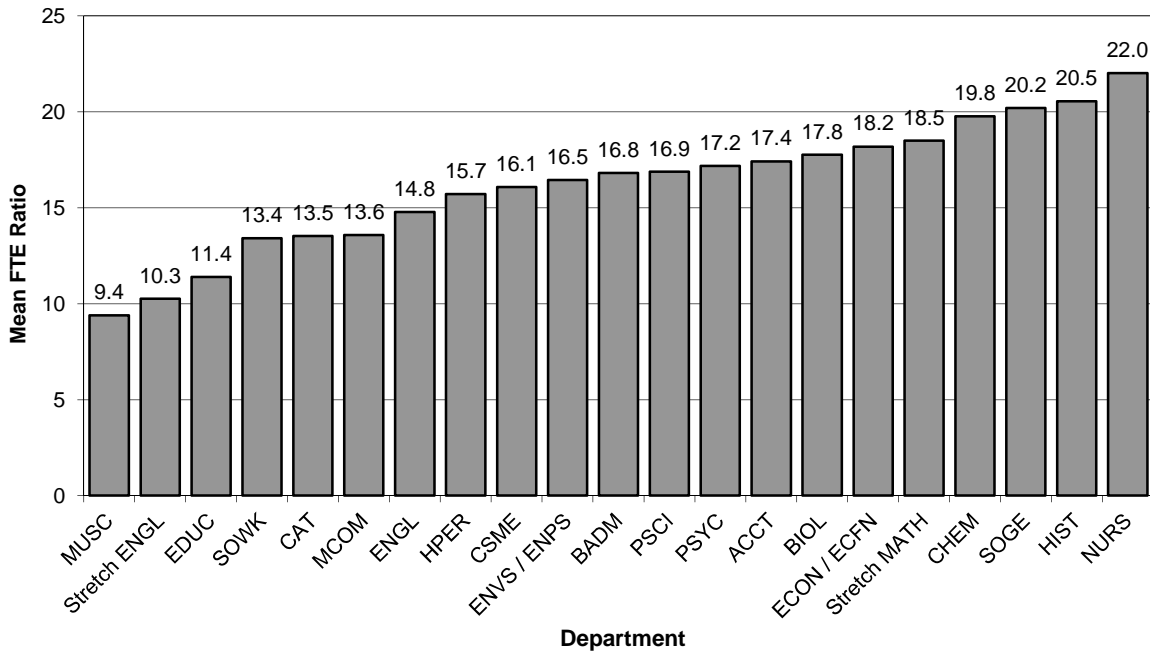


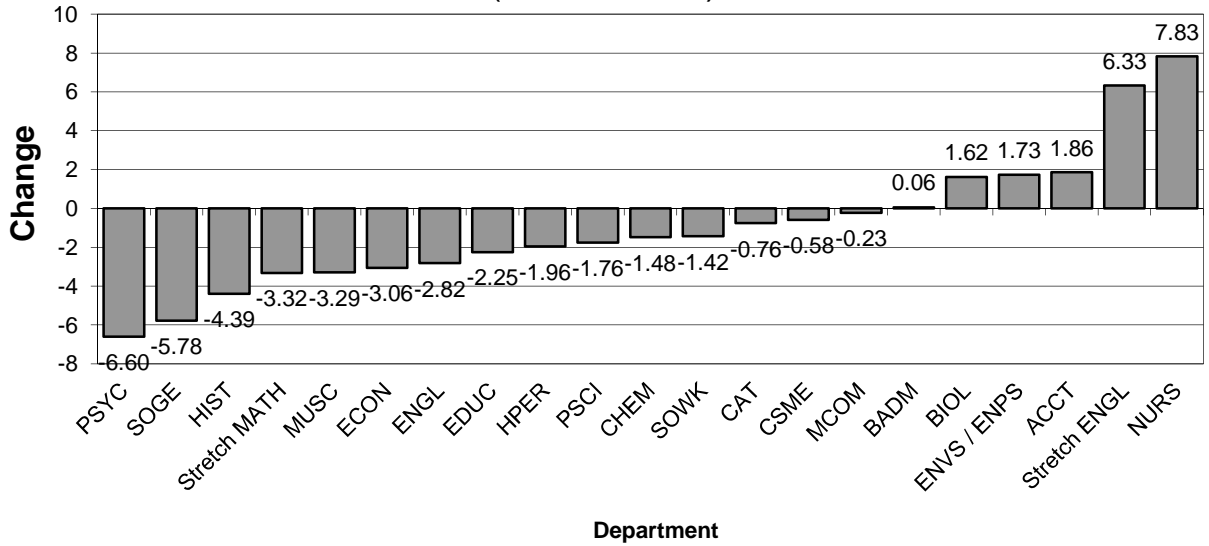
Table 9. Ratios of Student FTE Generated by Full-Time Faculty Only to Full-Time Faculty FTE

Department	Fall 2011			Fall 2012			Fall 2013			Fall 2014			Fall 2015					Fall 2011-15	
	Ratio	% Chg	A. Chg.	Ratio	% Chg	A. Chg.	Ratio	% Chg	A. Chg.	Ratio	% Chg	A. Chg.	F-FTE	S-FTE	Ratio	% Chg	A. Chg.	Mean Ratio	Change in Ratio
CAT	12.69	8.7%	1.02	12.40	-2.2%	-0.28	11.99	-3.4%	-0.42	11.10	-7.4%	-0.89	6.22	74.20	11.93	7.5%	0.83	12.02	-0.76
MCOM	12.93	-13.9%	-2.08	13.25	2.4%	0.32	13.20	-0.4%	-0.05	14.29	8.3%	1.09	4.25	54.00	12.71	-11.1%	-1.59	13.28	-0.23
ENGL	16.57	-4.3%	-0.74	14.25	-14.0%	-2.31	13.60	-4.6%	-0.65	13.64	0.2%	0.03	11.57	159.07	13.75	0.8%	0.11	14.36	-2.82
HIST	21.06	-8.2%	-1.87	21.91	4.1%	0.85	19.92	-9.1%	-1.99	19.10	-4.1%	-0.82	5.58	93.00	16.67	-12.7%	-2.43	19.73	-4.39
MUSC	12.87	-24.0%	-4.06	13.84	7.5%	0.97	12.06	-12.9%	-1.78	11.23	-6.9%	-0.83	6.11	58.57	9.59	-14.7%	-1.65	11.92	-3.29
<i>A&H</i>	15.31	-9.7%	-1.65	15.29	-0.1%	-0.02	14.07	-8.0%	-1.22	13.31	-5.4%	-0.76	33.73	438.84	13.01	-2.3%	-0.30	14.20	-2.30
ACCT	16.62	-11.4%	-2.14	17.72	6.7%	1.11	18.40	3.8%	0.68	16.33	-11.2%	-2.07	2.75	50.80	18.47	13.1%	2.14	17.51	1.86
BADM	16.41	-16.1%	-3.15	17.63	7.4%	1.22	16.59	-5.9%	-1.04	14.76	-11.0%	-1.83	7.05	116.13	16.47	11.6%	1.71	16.37	0.06
ECON / ECFN	19.20	-9.5%	-2.03	18.98	-1.2%	-0.22	16.98	-10.5%	-2.00	14.28	-15.9%	-2.70	4.25	68.60	16.14	13.0%	1.86	17.11	-3.06
PSCI	18.27	-11.0%	-2.27	19.20	5.1%	0.93	12.23	-36.3%	-6.97	16.04	31.1%	3.81	4.75	78.40	16.51	2.9%	0.46	16.45	-1.76
PSYC	19.38	12.5%	2.15	17.41	-10.1%	-1.97	16.77	-3.7%	-0.65	14.82	-11.6%	-1.94	6.37	81.40	12.78	-13.8%	-2.05	16.23	-6.60
SOGE	23.25	3.9%	0.88	21.57	-7.2%	-1.68	20.28	-6.0%	-1.29	18.82	-7.2%	-1.46	6.00	104.80	17.47	-7.2%	-1.35	20.28	-5.78
SOWK	13.33	7.1%	0.89	14.32	7.4%	0.99	13.98	-2.4%	-0.34	13.21	-5.5%	-0.78	2.67	31.80	11.91	-9.8%	-1.30	13.35	-1.42
<i>B&SS</i>	18.25	-6.7%	-1.30	18.24	-0.1%	-0.01	16.51	-9.5%	-1.73	15.59	-5.6%	-0.93	33.84	531.93	15.72	0.8%	0.13	16.86	-2.53
EDUC	12.47	-6.9%	-0.92	13.29	6.6%	0.83	12.02	-9.6%	-1.27	11.66	-3.0%	-0.36	9.94	101.60	10.22	-12.4%	-1.44	11.93	-2.25
HPER	16.99	1.2%	0.20	17.88	5.2%	0.89	13.95	-21.9%	-3.92	15.32	9.8%	1.37	7.83	117.67	15.03	-1.9%	-0.29	15.83	-1.96
NURS	19.22	-6.3%	-1.30	19.80	3.1%	0.59	24.23	22.3%	4.42	24.25	0.1%	0.03	6.33	171.20	27.05	11.5%	2.79	22.91	7.83
<i>E&PS</i>	15.79	-0.9%	-0.15	16.71	5.8%	0.92	15.79	-5.5%	-0.91	16.18	2.5%	0.39	24.10	390.47	16.20	0.1%	0.02	16.13	0.41
BIOL	15.59	-10.0%	-1.74	15.80	1.3%	0.20	19.07	20.7%	3.27	15.65	-18.0%	-3.43	7.79	134.13	17.22	10.1%	1.57	16.67	1.62
CHEM	21.68	-10.4%	-2.52	22.72	4.8%	1.03	19.71	-13.3%	-3.01	19.75	0.2%	0.05	4.58	92.53	20.20	2.3%	0.45	20.81	-1.48
CSME	14.38	-0.4%	-0.05	14.24	-1.0%	-0.14	14.43	1.3%	0.19	14.07	-2.5%	-0.36	10.98	151.53	13.80	-1.9%	-0.27	14.19	-0.58
ENVS / ENPS	15.51	-12.9%	-2.31	17.12	10.4%	1.61	17.86	4.3%	0.74	16.17	-9.5%	-1.69	4.83	83.27	17.24	6.6%	1.07	16.78	1.73
<i>NS&M</i>	16.01	-9.1%	-1.60	16.67	4.1%	0.66	17.31	3.9%	0.64	15.80	-8.7%	-1.51	28.18	461.46	16.38	3.7%	0.58	16.43	0.37
Stretch English	N/A	N/A	N/A	3.94	N/A	N/A	10.00	153.7%	6.06	9.33	-6.7%	-0.67	1.00	10.27	10.27	10.1%	0.94	8.39	6.33
Stretch Math	19.55	15.1%	2.57	17.78	-9.1%	-1.78	20.24	13.9%	2.46	17.96	-11.2%	-2.28	0.83	13.47	16.23	-9.7%	-1.74	18.35	-3.32
<i>Stretch</i>	19.55	15.1%	2.57	16.02	#####	-3.53	14.64	-8.6%	-1.38	14.73	0.6%	0.09	1.83	23.74	12.97	#####	-1.76	15.58	-6.58
Shepherd University	16.36	-7.3%	-1.29	16.70	2.0%	0.33	15.84	-5.1%	-0.85	15.12	-4.5%	-0.72	121.68	1846.44	15.17	0.3%	0.05	15.84	-1.19

General Explanation/Definitions.

1. The **ratio** is obtained by dividing the student FTE generated by full-time faculty by the full-time faculty FTE. For full-time faculty, one faculty FTE (full-time equivalent) equals 12 hours of instructional responsibility and one student FTE equals 15 credit hours.
2. The **% change** is the difference between the ratio in two consecutive years divided by the ratio of the earlier year.
3. The **annual change** is the current year's ratio minus the prior year's ratio.
4. The **mean ratio** is the sum of the annual ratios divided by the number of years for which data are presented (five years).
5. The **change in ratio** is the current year's ratio minus the first year's ratio.
6. Numbers include undergraduate instruction only.

**Graph 9A: Change in FTE Ratios
(Student FTE: Faculty FTE for Full-Time Faculty),
2011-2015
(from Table 9)**



**Graph 9B: Mean FTE Ratios
(Student FTE: Faculty FTE for Full-Time Faculty),
2011-2015
(from Table 9)**

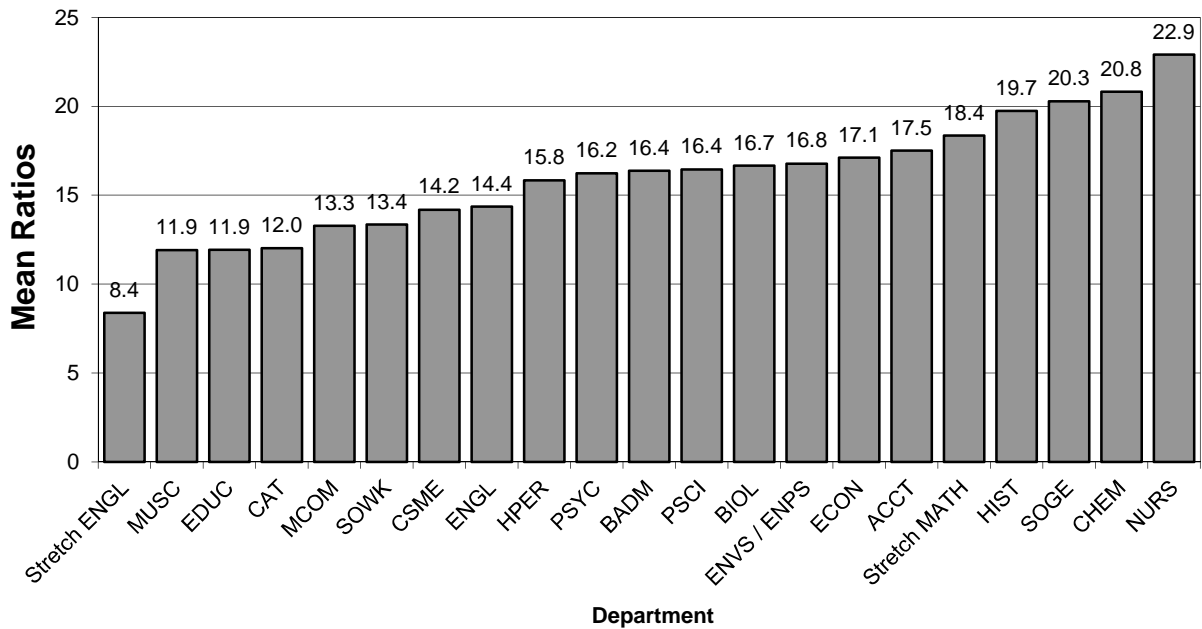


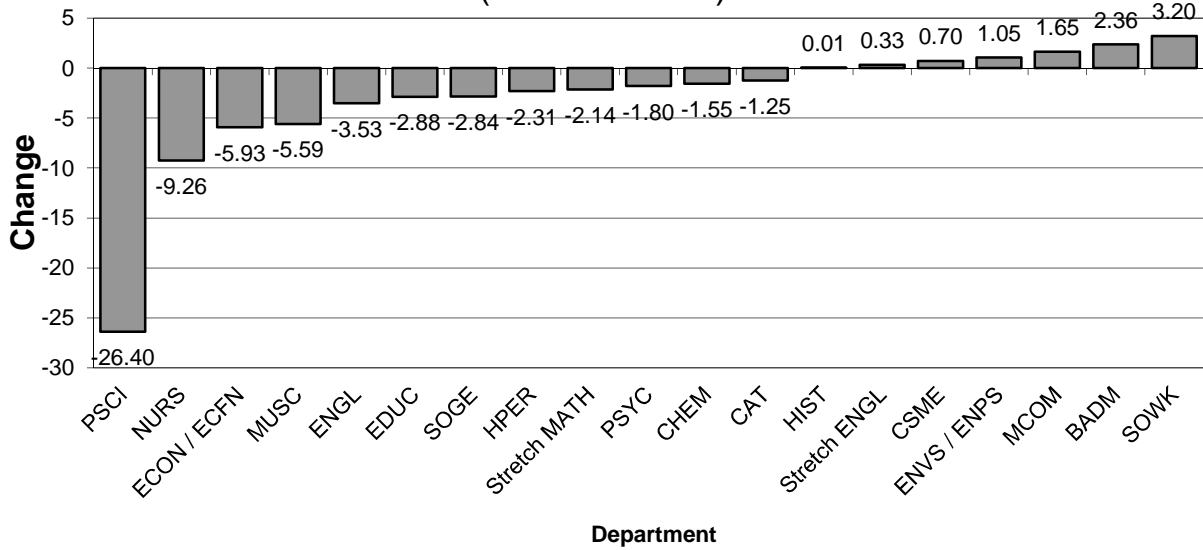
Table 10. Ratios of Student FTE Generated by Part-Time Faculty Only to Part-Time Faculty FTE

Department	Fall 2011			Fall 2012			Fall 2013			Fall 2014			Fall 2015					Fall 2011-15	
	Ratio	% Chg	A. Chg.	Ratio	% Chg	A. Chg.	Ratio	% Chg	A. Chg.	Ratio	% Chg	A. Chg.	F-FTE	S-FTE	Ratio	% Chg	A. Chg.	Mean Ratio	Change in Ratio
CAT	15.10	-8.3%	-1.36	16.42	8.8%	1.33	15.90	-3.2%	-0.52	15.93	0.2%	0.03	5.98	82.80	13.85	-13.1%	-2.08	15.44	-1.25
MCOM	13.18	-9.5%	-1.39	15.20	15.3%	2.02	13.23	-13.0%	-1.97	12.97	-2.0%	-0.26	3.25	48.20	14.83	14.3%	1.86	13.88	1.65
ENGL	16.92	-2.2%	-0.39	16.17	-4.5%	-0.75	14.66	-9.3%	-1.51	14.53	-0.9%	-0.13	7.75	103.80	13.39	-7.8%	-1.14	15.14	-3.53
HIST	22.48	0.8%	0.19	24.01	6.8%	1.53	20.49	-14.7%	-3.52	18.75	-8.5%	-1.74	4.73	106.40	22.49	20.0%	3.75	21.64	0.01
MUSC	11.61	-13.0%	-1.73	7.89	-32.0%	-3.72	7.31	-7.3%	-0.58	5.22	-28.5%	-2.08	8.94	53.80	6.02	15.2%	0.79	7.61	-5.59
<i>A&H</i>	15.57	-4.7%	-0.77	14.88	-4.4%	-0.69	13.82	-7.1%	-1.06	13.18	-4.7%	-0.64	30.65	395.00	12.89	-2.2%	-0.29	14.07	-2.68
ACCT	N/A	N/A	N/A	N/A	N/A	N/A	19.20	N/A	N/A	20.00	4.2%	0.80	0.50	5.60	11.20	-44.0%	-8.80	16.80	11.20
BADM	17.07	-23.1%	-5.14	19.48	14.1%	2.41	15.00	-23.0%	-4.48	17.23	14.8%	2.23	3.33	64.73	19.44	12.8%	2.21	17.64	2.36
ECON / ECFN	25.26	-2.2%	-0.57	19.09	-24.4%	-6.17	20.34	6.6%	1.26	20.00	-1.7%	-0.34	1.49	28.80	19.33	-3.4%	-0.67	20.80	-5.93
PSCI	26.40	7.3%	1.81	18.80	-28.8%	-7.60	21.92	16.6%	3.12	10.40	-52.6%	-11.52	0.00	0.00	N/A	N/A	N/A	19.38	-26.40
PSYC	21.51	6.0%	1.21	18.13	-15.7%	-3.38	17.43	-3.9%	-0.70	17.41	-0.1%	-0.01	3.50	69.00	19.71	13.2%	2.30	18.84	-1.80
SOGE	20.57	5.0%	0.97	23.29	13.2%	2.72	17.37	-25.4%	-5.92	20.92	20.4%	3.55	3.00	53.20	17.73	-15.2%	-3.19	19.98	-2.84
SOWK	11.20	-37.8%	-6.80	N/A	N/A	N/A	18.40	N/A	N/A	9.60	-47.8%	-8.80	0.50	7.20	14.40	50.0%	4.80	13.40	3.20
<i>B&SS</i>	20.46	-6.3%	-1.39	20.31	-0.7%	-0.15	17.76	-12.5%	-2.55	18.13	2.1%	0.37	12.32	228.53	18.55	2.3%	0.42	19.04	-1.91
EDUC	11.02	-16.6%	-2.20	7.66	-30.5%	-3.36	7.47	-2.5%	-0.19	10.57	41.5%	3.10	2.67	21.73	8.14	-23.0%	-2.43	8.97	-2.88
HPER	17.76	-4.8%	-0.89	15.10	-15.0%	-2.66	14.80	-2.0%	-0.30	14.87	0.5%	0.08	14.41	222.60	15.45	3.9%	0.57	15.60	-2.31
NURS	16.73	N/A	N/A	17.92	7.1%	1.19	4.36	-75.7%	-13.56	29.38	573.8%	25.02	1.00	7.47	7.47	-74.6%	-21.91	15.17	-9.26
<i>E&PS</i>	16.39	-6.0%	-1.05	14.38	-12.2%	-2.01	14.07	-2.2%	-0.31	15.03	6.8%	0.96	18.08	251.80	13.93	-7.3%	-1.10	14.76	-2.46
BIOL	18.46	-1.3%	-0.23	19.62	6.3%	1.17	18.88	-3.8%	-0.75	24.18	28.1%	5.30	3.33	73.07	21.94	-9.2%	-2.23	20.62	3.49
CHEM	18.53	3.2%	0.57	17.20	-7.2%	-1.33	17.47	1.6%	0.27	18.44	5.5%	0.97	1.83	31.07	16.98	-7.9%	-1.46	17.72	-1.55
CSME	18.20	0.0%	0.00	20.70	13.7%	2.50	19.32	-6.6%	-1.38	19.37	0.3%	0.05	5.58	105.47	18.90	-2.4%	-0.47	19.30	0.70
ENVS / ENPS	14.95	-3.2%	-0.49	14.17	-5.2%	-0.78	15.06	6.3%	0.89	17.84	18.5%	2.78	1.50	24.00	16.00	-10.3%	-1.84	15.60	1.05
<i>NS&M</i>	17.92	0.2%	0.03	18.96	5.8%	1.04	18.31	-3.4%	-0.65	19.98	9.1%	1.66	12.24	233.61	19.09	-4.5%	-0.89	18.85	1.16
Stretch English	10.42	-7.7%	-0.87	10.36	-0.6%	-0.06	12.42	19.9%	2.06	9.00	-27.5%	-3.42	0.67	7.20	10.75	19.4%	1.75	10.59	0.33
Stretch Math	19.94	9.4%	1.72	17.12	-14.1%	-2.82	20.07	17.2%	2.94	17.67	-12.0%	-2.40	2.00	35.60	17.80	0.8%	0.13	18.52	-2.14
<i>Stretch</i>	13.60	-7.8%	-1.15	13.33	-2.0%	-0.27	17.24	29.3%	3.91	14.07	-18.4%	-3.17	2.67	42.80	16.03	13.9%	1.96	14.85	2.43
Shepherd University	16.77	-4.3%	-0.76	16.31	-2.8%	-0.47	15.41	-5.5%	-0.89	15.51	0.7%	0.10	75.96	1151.74	15.16	-2.3%	-0.35	15.83	-1.61

General Explanation/Definitions.

1. The **ratio** is obtained by dividing the student FTE generated by part-time faculty by the part-time faculty FTE. For part-time faculty, one faculty FTE (full-time equivalent) equals 15 hours of instructional responsibility and one student FTE equals 15 credit hours.
2. The **% change** is the difference between the ratio in two consecutive years divided by the ratio of the earlier year.
3. The **annual change** is the current year's ratio minus the prior year's ratio.
4. The **mean ratio** is the sum of the annual ratios divided by the number of years for which data are presented (five years).
5. The **change in ratio** is the current year's ratio minus the first year's ratio.
6. Numbers include undergraduate instruction only.

**Graph 10A: Change in FTE Ratios
(Student FTE: Faculty FTE for Part-Time Faculty),
2011-2015
(from Table 10)**



**Graph 10B: Mean FTE Ratios
(Student FTE: Faculty FTE for Part-Time Faculty),
2011-2015
(from Table 10)**

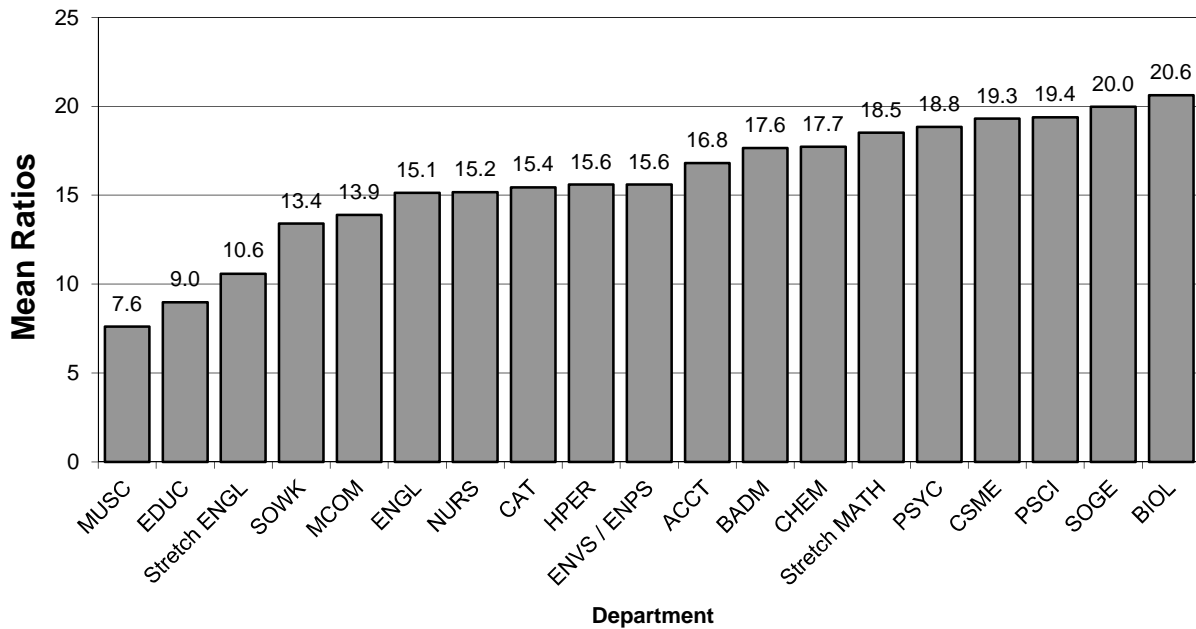


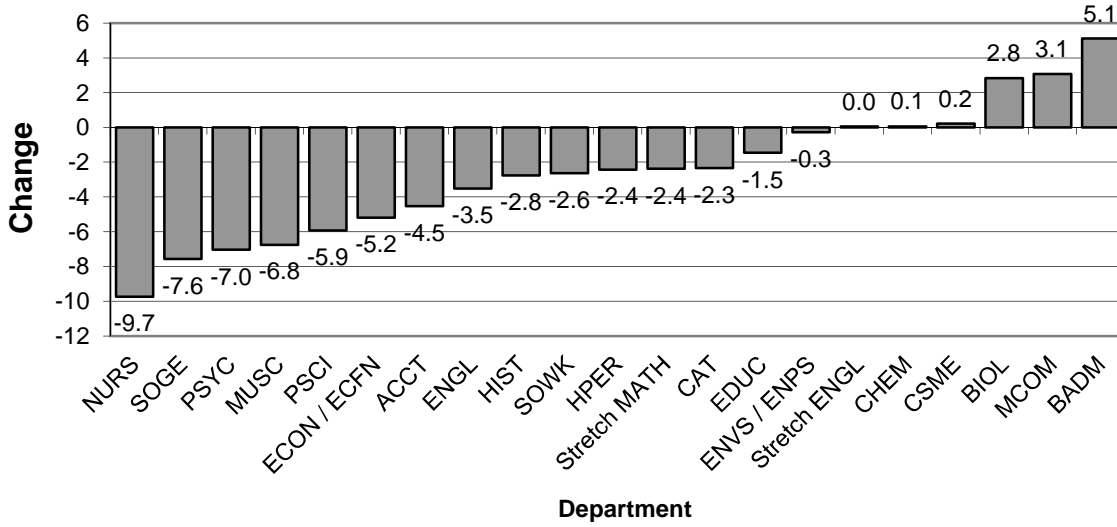
Table 11. Student-to-Faculty FTE Ratios in Lower Level Courses

Department	Fall 2011			Fall 2012			Fall 2013			Fall 2014			Fall 2015					Fall 2011-15	
	Ratio	% Chg.	A. Chg.	Ratio	% Chg.	A. Chg.	Ratio	% Chg.	A. Chg.	Ratio	% Chg.	A. Chg.	Faculty FTE	Student FTE	Ratio	% Chg.	A. Chg.	Mean Ratio	Change in Ratio
CAT	16.25	-0.08	-1.51	15.75	-0.03	-0.50	15.01	-0.05	-0.74	15.37	0.02	0.35	6.48	90.20	13.92	-0.09	-1.45	15.26	-2.33
MCOM	12.74	-0.17	-2.66	15.64	0.23	2.91	13.29	-0.15	-2.35	14.11	0.06	0.82	3.00	47.40	15.80	0.12	1.69	14.32	3.06
ENGL	17.90	-0.04	-0.69	16.10	-0.10	-1.80	15.20	-0.06	-0.90	15.11	-0.01	-0.09	14.25	204.80	14.37	-0.05	-0.74	15.74	-3.53
HIST	24.20	0.01	0.27	24.95	0.03	0.75	22.67	-0.09	-2.27	18.99	-0.16	-3.69	7.07	151.60	21.44	0.13	2.46	22.45	-2.76
MUSC	16.49	-0.26	-5.82	11.81	-0.28	-4.67	10.67	-0.10	-1.14	10.00	-0.06	-0.67	7.52	73.17	9.73	-0.03	-0.27	11.74	-6.76
<i>A&H</i>	<i>17.76</i>	<i>-0.08</i>	<i>-1.45</i>	<i>16.88</i>	<i>-0.05</i>	<i>-0.88</i>	<i>15.64</i>	<i>-0.07</i>	<i>-1.25</i>	<i>14.88</i>	<i>-0.05</i>	<i>-0.76</i>	<i>38.32</i>	<i>567.17</i>	<i>14.80</i>	<i>-0.01</i>	<i>-0.08</i>	<i>15.99</i>	<i>-2.96</i>
ACCT	20.13	0.10	1.88	19.07	-0.05	-1.07	17.20	-0.10	-1.87	17.47	0.02	0.27	1.50	23.40	15.60	-0.11	-1.87	17.89	-4.53
BADM	18.56	-0.04	-0.74	16.04	-0.14	-2.53	14.84	-0.07	-1.20	23.27	0.57	8.43	1.83	43.33	23.68	0.02	0.41	19.28	5.11
ECON / ECFN	23.43	-0.02	-0.52	21.04	-0.10	-2.39	18.90	-0.10	-2.14	18.50	-0.02	-0.40	3.74	68.20	18.24	-0.01	-0.26	20.02	-5.19
PSCI	24.27	0.02	0.36	18.50	-0.24	-5.77	18.13	-0.02	-0.37	15.51	-0.14	-2.63	2.75	50.40	18.33	0.18	2.82	18.95	-5.94
PSYC	21.91	0.08	1.57	18.95	-0.13	-2.96	17.87	-0.06	-1.08	16.18	-0.09	-1.69	5.37	79.80	14.86	-0.08	-1.32	17.95	-7.05
SOGE	27.79	0.12	2.91	25.64	-0.08	-2.15	23.24	-0.09	-2.40	22.40	-0.04	-0.84	4.75	96.00	20.21	-0.10	-2.19	23.86	-7.58
SOWK	19.00	-0.05	-1.00	19.18	0.01	0.18	16.97	-0.12	-2.21	9.91	-0.42	-7.06	0.33	5.40	16.36	0.65	6.45	16.28	-2.64
<i>BASS</i>	<i>23.65</i>	<i>0.03</i>	<i>0.80</i>	<i>20.66</i>	<i>-0.13</i>	<i>-3.00</i>	<i>19.00</i>	<i>-0.08</i>	<i>-1.65</i>	<i>18.69</i>	<i>-0.02</i>	<i>-0.32</i>	<i>20.27</i>	<i>366.53</i>	<i>18.08</i>	<i>-0.03</i>	<i>-0.60</i>	<i>20.02</i>	<i>-5.57</i>
EDUC	14.62	-0.02	-0.36	17.55	0.20	2.93	16.62	-0.05	-0.93	15.73	-0.05	-0.89	1.50	19.73	13.15	-0.16	-2.58	15.54	-1.47
HPER	20.84	0.04	0.73	17.69	-0.15	-3.14	16.82	-0.05	-0.87	18.18	0.08	1.35	12.24	225.33	18.41	0.01	0.23	18.39	-2.43
NURS	9.74	0.28	2.14	12.40	0.27	2.66	8.25	-0.33	-4.15	13.02	0.58	4.77	0.00	0.00	N/A	-0.58	-4.77	10.85	-9.74
<i>E&PS</i>	<i>19.56</i>	<i>0.04</i>	<i>0.77</i>	<i>17.51</i>	<i>-0.10</i>	<i>-2.05</i>	<i>16.43</i>	<i>-0.06</i>	<i>-1.08</i>	<i>17.75</i>	<i>0.08</i>	<i>1.32</i>	<i>13.74</i>	<i>245.06</i>	<i>17.84</i>	<i>0.00</i>	<i>0.08</i>	<i>17.82</i>	<i>-1.72</i>
BIOL	16.84	-0.09	-1.61	18.73	0.11	1.89	19.77	0.06	1.04	18.92	-0.04	-0.85	7.67	150.93	19.68	0.04	0.76	18.79	2.84
CHEM	20.97	-0.10	-2.35	20.78	-0.01	-0.20	20.44	-0.02	-0.33	19.66	-0.04	-0.78	3.91	82.20	21.02	0.07	1.36	20.58	0.05
CSME	17.59	1.1%	0.20	18.09	2.9%	0.50	18.27	1.0%	0.18	17.79	-2.6%	-0.48	9.91	176.53	17.81	0.1%	0.02	17.91	0.22
ENVS / ENPS	16.90	-0.16	-3.14	16.57	-0.02	-0.33	16.44	-0.01	-0.13	15.57	-0.05	-0.87	3.75	62.33	16.62	0.07	1.05	16.42	-0.28
<i>NS&M</i>	<i>17.85</i>	<i>-0.06</i>	<i>-1.17</i>	<i>18.45</i>	<i>0.03</i>	<i>0.60</i>	<i>18.81</i>	<i>0.02</i>	<i>0.36</i>	<i>18.00</i>	<i>-0.04</i>	<i>-0.81</i>	<i>25.24</i>	<i>471.99</i>	<i>18.70</i>	<i>0.04</i>	<i>0.70</i>	<i>18.36</i>	<i>0.85</i>
Stretch English	10.42	-7.7%	-0.87	9.92	-4.8%	-0.50	11.30	14.0%	1.38	9.18	-18.8%	-2.12	1.67	17.47	10.46	14.0%	1.28	10.26	0.04
Stretch Math	19.73	11.6%	2.05	17.38	-11.9%	-2.35	20.12	15.8%	2.74	17.90	-11.0%	-2.21	2.83	49.07	17.34	-3.2%	-0.57	18.49	-2.39
<i>Stretch</i>	<i>15.39</i>	<i>0.1%</i>	<i>0.01</i>	<i>13.99</i>	<i>-9.1%</i>	<i>-1.40</i>	<i>16.29</i>	<i>16.5%</i>	<i>2.30</i>	<i>14.48</i>	<i>-11.1%</i>	<i>-1.81</i>	<i>4.50</i>	<i>66.54</i>	<i>14.79</i>	<i>2.1%</i>	<i>0.31</i>	<i>14.99</i>	<i>-0.60</i>
Shepherd University	18.79	-4.1%	-0.79	17.89	-4.8%	-0.90	17.20	-3.8%	-0.69	16.78	-2.5%	-0.42	102.07	1717.29	16.82	0.3%	0.05	17.50	-1.97

General Explanation/Definitions.

1. The **ratio** is obtained by dividing the student FTE by the faculty FTE .
2. **Lower level** includes 100 and 200 level courses.
3. The **% change** is the difference between the ratio in two consecutive years divided by the ratio of the earlier year.
4. The **annual change** (A. Chg.) is the current year's ratio minus the prior year's ratio.
5. The **mean ratio** is the sum of the annual ratios divided by the number of years for which data are presented (five years).
6. The **change in ratio** is the current year's ratio minus the earliest year's ratio.
7. Numbers include undergraduate instruction only.

Graph 11A: Change in Student FTE to Faculty FTE Ratios in Lower Level Courses, 2011 - 2015
(from Table 11)



Graph 11B: Mean Student FTE to Faculty FTE Ratios in Lower Level Courses, 2011 - 2015
(from Table 11)

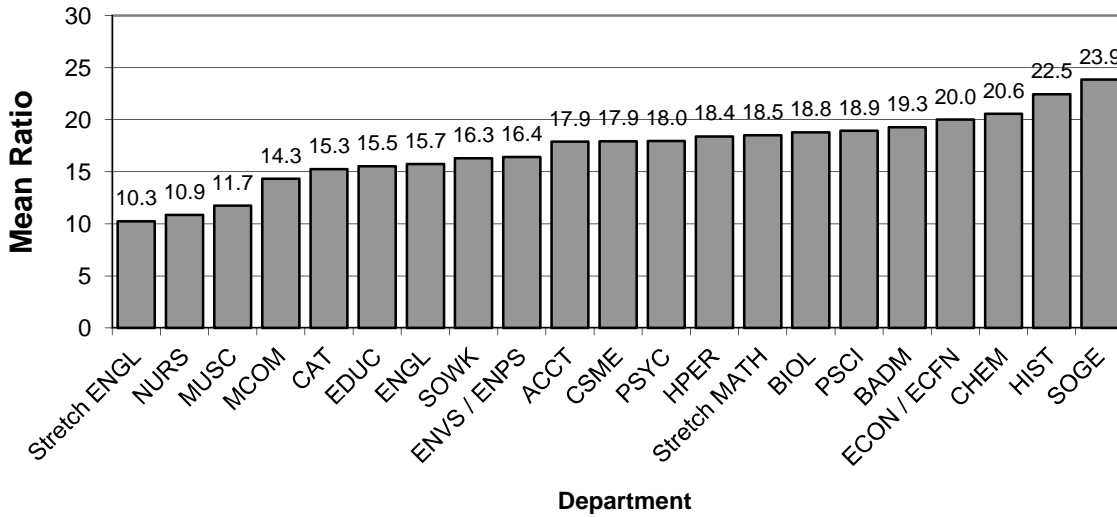


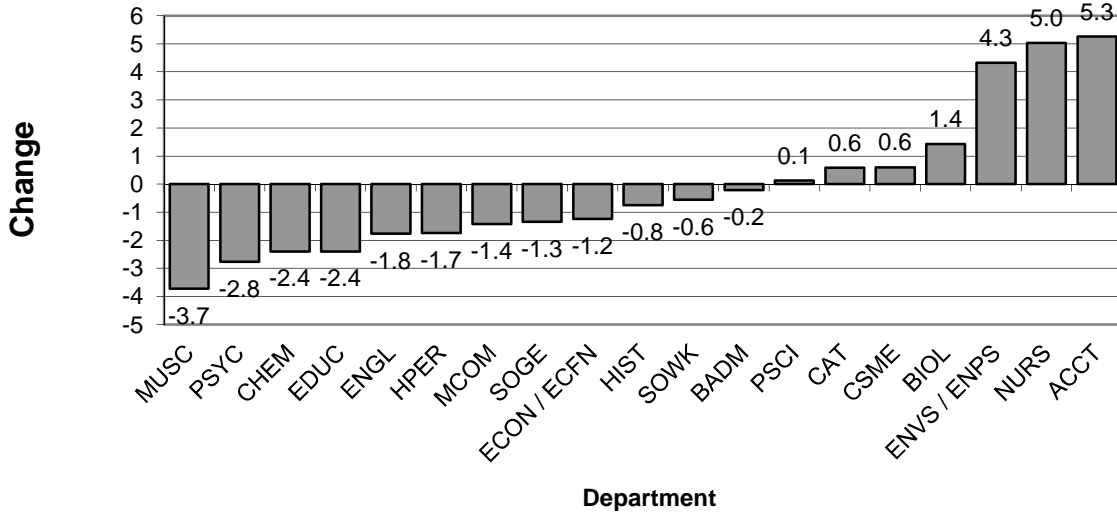
Table 12. Student-to-Faculty FTE Ratios in Upper Level Courses

Department	Fall 2011			Fall 2012			Fall 2013			Fall 2014			Fall 2015					Fall 2011-15	
	Ratio	% Chg.	A. Chg.	Ratio	% Chg.	A. Chg.	Ratio	% Chg.	A. Chg.	Ratio	% Chg.	A. Chg.	Faculty FTE	Student FTE	Ratio	% Chg.	A. Chg.	Mean Ratio	Change in Ratio
CAT	11.09	1.9%	0.21	12.13	0.09	1.04	11.61	-0.04	-0.52	10.62	-0.09	-1.00	5.72	66.80	11.68	0.10	1.06	11.43	0.58
MCOM	13.60	0.7%	0.09	12.89	-0.05	-0.71	13.16	0.02	0.26	13.38	0.02	0.22	4.50	54.80	12.18	-0.09	-1.20	13.04	-1.42
ENGL	13.22	3.6%	0.46	13.03	-0.01	-0.19	11.21	-0.14	-1.82	10.58	-0.06	-0.63	5.07	58.07	11.45	0.08	0.87	11.90	-1.77
HIST	15.51	-17.4%	-3.28	16.55	0.07	1.05	14.67	-0.11	-1.88	18.70	0.27	4.03	3.24	47.80	14.75	-0.21	-3.95	16.04	-0.75
MUSC	8.94	-5.3%	-0.50	8.26	-0.08	-0.68	7.93	-0.04	-0.33	6.18	-0.22	-1.75	7.52	39.20	5.21	-0.16	-0.96	7.30	-3.73
<i>A&H</i>	11.72	-2.4%	-0.29	11.92	0.02	0.20	11.25	-0.06	-0.67	10.81	-0.04	-0.44	26.05	266.67	10.24	-0.05	-0.57	11.19	-1.48
ACCT	13.60	-26.1%	-4.80	16.57	0.22	2.97	19.66	0.19	3.09	16.40	-0.17	-3.26	1.75	33.00	18.86	0.15	2.46	17.02	5.26
BADM	16.32	-22.0%	-4.61	18.43	0.13	2.11	16.49	-0.11	-1.94	14.17	-0.14	-2.32	8.54	137.53	16.10	0.14	1.94	16.30	-0.22
ECON / ECFN	15.84	-13.9%	-2.56	14.70	-0.07	-1.14	16.18	0.10	1.48	10.96	-0.32	-5.22	2.00	29.20	14.60	0.33	3.64	14.46	-1.24
PSCI	13.87	-11.8%	-1.85	20.93	0.51	7.06	9.37	-0.55	-11.56	15.50	0.65	6.13	2.00	28.00	14.00	-0.10	-1.50	14.74	0.13
PSYC	18.46	11.3%	1.87	16.42	-0.11	-2.04	16.21	-0.01	-0.21	15.33	-0.05	-0.88	4.50	70.60	15.69	0.02	0.36	16.42	-2.77
SOGE	15.93	-8.1%	-1.40	18.81	0.18	2.88	15.27	-0.19	-3.54	16.36	0.07	1.09	4.25	62.00	14.59	-0.11	-1.77	16.19	-1.35
SOWK	12.43	-2.7%	-0.35	13.81	0.11	1.37	14.07	0.02	0.26	13.31	-0.05	-0.76	2.83	33.60	11.87	-0.11	-1.44	13.10	-0.56
<i>BASS</i>	15.69	-13.5%	-2.46	17.38	0.11	1.70	15.27	-0.12	-2.12	14.58	-0.04	-0.68	25.87	393.93	15.23	0.04	0.65	15.63	-0.46
EDUC	11.74	-9.8%	-1.27	11.04	-0.06	-0.70	10.79	-0.02	-0.25	10.79	0.00	0.00	11.10	103.60	9.33	-0.14	-1.46	10.74	-2.40
HPER	13.23	-13.4%	-2.05	14.17	0.07	0.94	11.41	-0.19	-2.76	11.63	0.02	0.22	10.00	114.93	11.49	-0.01	-0.14	12.39	-1.74
NURS	19.34	-4.4%	-0.88	19.59	0.01	0.25	24.31	0.24	4.72	25.81	0.06	1.50	7.33	178.67	24.38	-0.06	-1.44	22.69	5.03
<i>E&PS</i>	14.15	-8.5%	-1.31	14.65	0.04	0.50	14.38	-0.02	-0.27	14.75	0.03	0.36	28.43	397.20	13.97	-0.05	-0.77	14.38	-0.18
BIOL	14.89	-7.5%	-1.21	13.47	-0.10	-1.42	16.11	0.20	2.64	14.49	-0.10	-1.62	3.45	56.27	16.31	0.13	1.82	15.05	1.42
CHEM	18.90	-3.6%	-0.71	19.50	0.03	0.60	17.40	-0.11	-2.10	18.79	0.08	1.39	2.51	41.40	16.49	-0.12	-2.29	18.22	-2.41
CSME	11.50	-11.2%	-1.45	14.82	28.9%	3.32	12.86	-13.2%	-1.96	12.60	-2.0%	-0.26	6.65	80.47	12.10	-0.04	-0.50	12.78	0.60
ENVS / ENPS	13.09	-6.9%	-0.97	16.18	0.24	3.09	17.94	0.11	1.76	18.04	0.01	0.10	2.58	44.93	17.41	-3.4%	-0.62	16.53	4.33
<i>NS&M</i>	13.68	-0.09	-1.30	15.55	0.14	1.88	15.14	-0.03	-0.41	15.01	-0.01	-0.13	15.19	223.07	14.69	-2.2%	-0.32	14.81	1.01
Shepherd University	13.78	-8.3%	-1.24	14.76	0.07	0.98	13.86	-0.06	-0.89	13.67	-0.01	-0.19	95.54	1280.87	13.41	-1.9%	-0.27	13.90	-0.37

General Explanation/Definitions.

1. The **ratio** is obtained by dividing the student FTE by the faculty FTE.
2. **Upper level** includes 300 and 400 level courses.
3. The **% change** is the difference between the ratio in two consecutive years divided by the ratio of the earlier year.
4. The **annual change** (A. Chg.) is the current year's ratio minus the prior year's ratio.
5. The **mean ratio** is the sum of the annual ratios divided by the number of years for which data are presented (five years).
6. The **change in ratio** is the current year's ratio minus the earliest year's ratio.
7. Numbers include undergraduate instruction only.

Graph 12A: Change in Student FTE to Faculty FTE Ratios in Upper Level Courses, 2011 - 2015
(from Table 12)



Graph 12B: Mean Student FTE to Faculty FTE Ratios in Upper Level Courses, 2011 - 2015
(from Table 12)

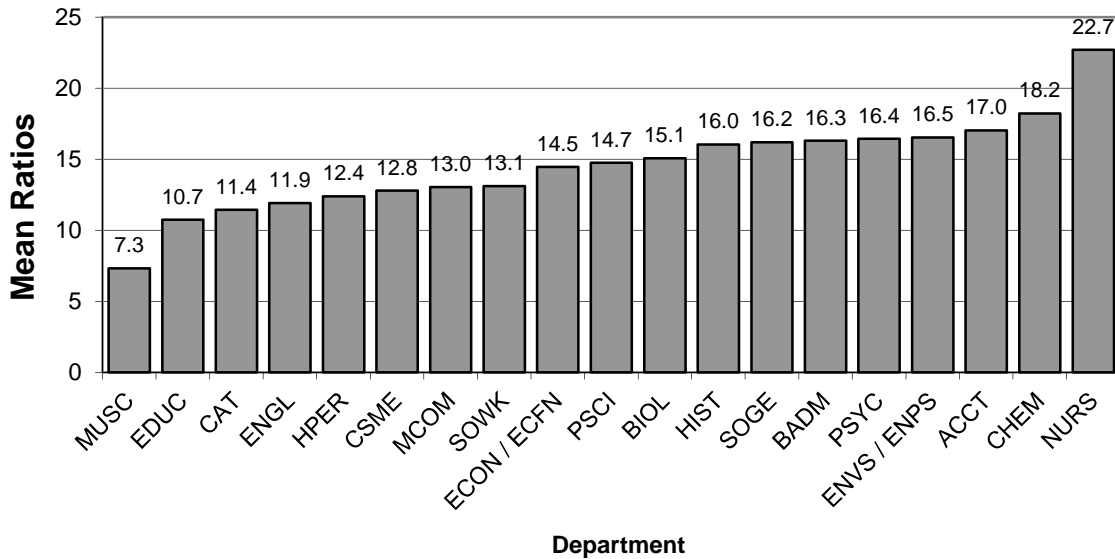
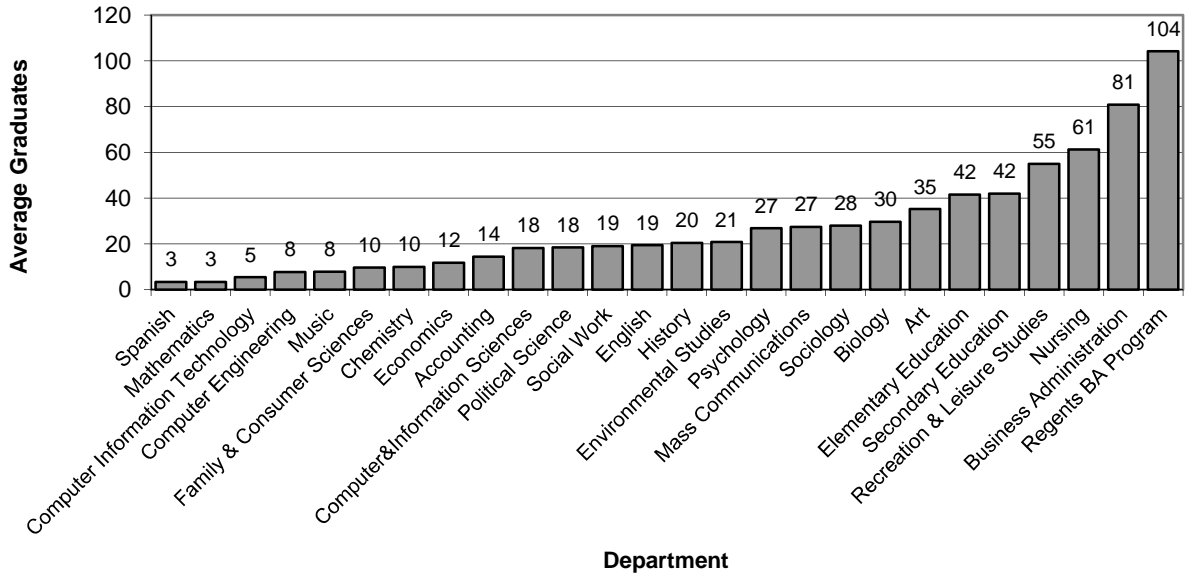


Table 13. Graduates from Baccalaureate Programs

MAJORS OF GRADUATES	2010-2011	2011-2012	2012-2013	2013-14	2014-15	Mean N	Change	%age change
Art	39	34	35	34	34	35.2	-5	-12.8%
Mass Comm / Comm New Media	16	35	23	27	36	27.4	20	125.0%
English	7	22	23	26	19	19.4	12	171.4%
History	22	13	17	23	27	20.4	5	22.7%
Music	4	8	8	10	9	7.8	5	125.0%
Spanish	2	5	3	3	4	3.4	2	100.0%
<i>A&H</i>	<i>90</i>	<i>117</i>	<i>109</i>	<i>123</i>	<i>129</i>	<i>113.6</i>	<i>39</i>	<i>43.3%</i>
Accounting	18	9	12	14	19	14.4	1	5.6%
Business Administration	98	83	79	77	67	80.8	-31	-31.6%
Family & Consumer Sciences	10	11	7	12	8	9.6	-2	-20.0%
Economics	7	13	9	19	11	11.8	4	57.1%
Political Science	21	12	22	19	18	18.4	-3	-14.3%
Psychology	21	33	28	27	25	26.8	4	19.0%
Sociology	11	17	33	43	36	28.0	25	227.3%
Social Work	17	14	18	22	24	19.0	7	41.2%
<i>B&SS</i>	<i>203</i>	<i>192</i>	<i>208</i>	<i>233</i>	<i>208</i>	<i>208.8</i>	<i>5</i>	<i>2.5%</i>
Elementary Education	35	34	40	45	54	41.6	19	54.3%
Secondary Education	52	35	44	35	44	42.0	-8	-15.4%
Art Education	6	9	4	3	1	4.6	-5	-83.3%
Biology Education	0	0	1	1	1	0.6	1	#DIV/0!
Chemistry Education	0	0	0	0	1	0.2	1	#DIV/0!
English Education	6	3	4	5	5	4.6	-1	-16.7%
Family & Consumer Sci Education	1	2	1	1	0	1.0	-1	-100.0%
General Science Education	0	0	2	0	0	0.4	0	#DIV/0!
Health Education	13	11	10	9	12	11.0	-1	-7.7%
Mathematics Education	8	3	3	7	7	5.6	-1	-12.5%
Music Education	9	7	11	13	11	10.2	2	22.2%
Physical Education	11	14	11	9	13	11.6	2	18.2%
Social Studies Education	11	5	11	8	7	8.4	-4	-36.4%
Spanish Education	1	1	1	0	0	0.6	-1	-100.0%
Recreation & Leisure Studies	55	51	38	55	76	55.0	21	38.2%
Nursing	44	52	63	72	75	61.2	31	70.5%
<i>E&PS</i>	<i>186</i>	<i>172</i>	<i>185</i>	<i>207</i>	<i>249</i>	<i>199.8</i>	<i>63</i>	<i>33.9%</i>
Biology	18	30	31	36	33	29.6	15	83.3%
Chemistry	6	8	12	13	11	10.0	5	83.3%
Computer&Information Sciences	26	20	13	19	13	18.2	-13	-50.0%
Computer Engineering		3	7	10	11	7.8	11	#DIV/0!
Computer Information Technology	4	5	3	4	11	5.4	7	175.0%
Environmental Studies	19	17	24	31	13	20.8	-6	-31.6%
Mathematics	8	3	3	2	1	3.4	-7	-87.5%
<i>NS&M</i>	<i>81</i>	<i>86</i>	<i>93</i>	<i>115</i>	<i>93</i>	<i>93.6</i>	<i>12</i>	<i>14.8%</i>
Regents BA Program	94	123	102	91	111	104.2	17	18.1%
Shepherd University	654	690	697	769	790	720.0	136	20.8%

1. Numbers are counts of graduates for the academic year listed. For this table, the academic year is considered to run from fall through spring to summer.
2. The **mean** is the sum of the annual counts divided by the number of years for which data are presented (five years).
3. The **change** is the current year's number minus the first year's number.

Graph 13A: Average Number of Baccalaureate Degrees by Major, 2010-2011 to 2014-2015
(from Table 13)



Graph 13B: Baccalaureate Graduates in 2014-2015
(from Table 13)

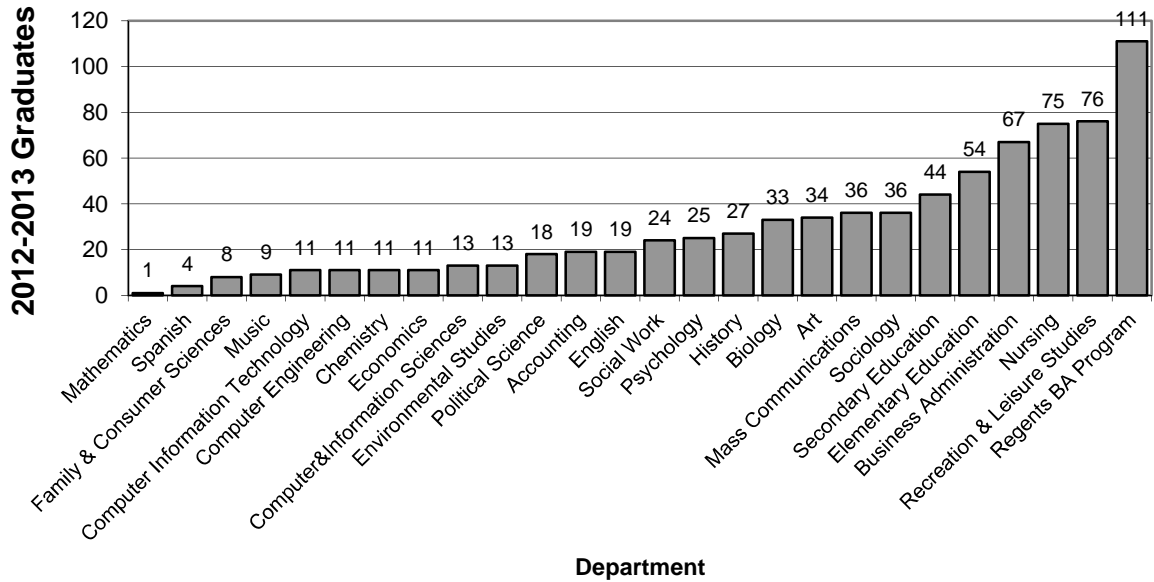


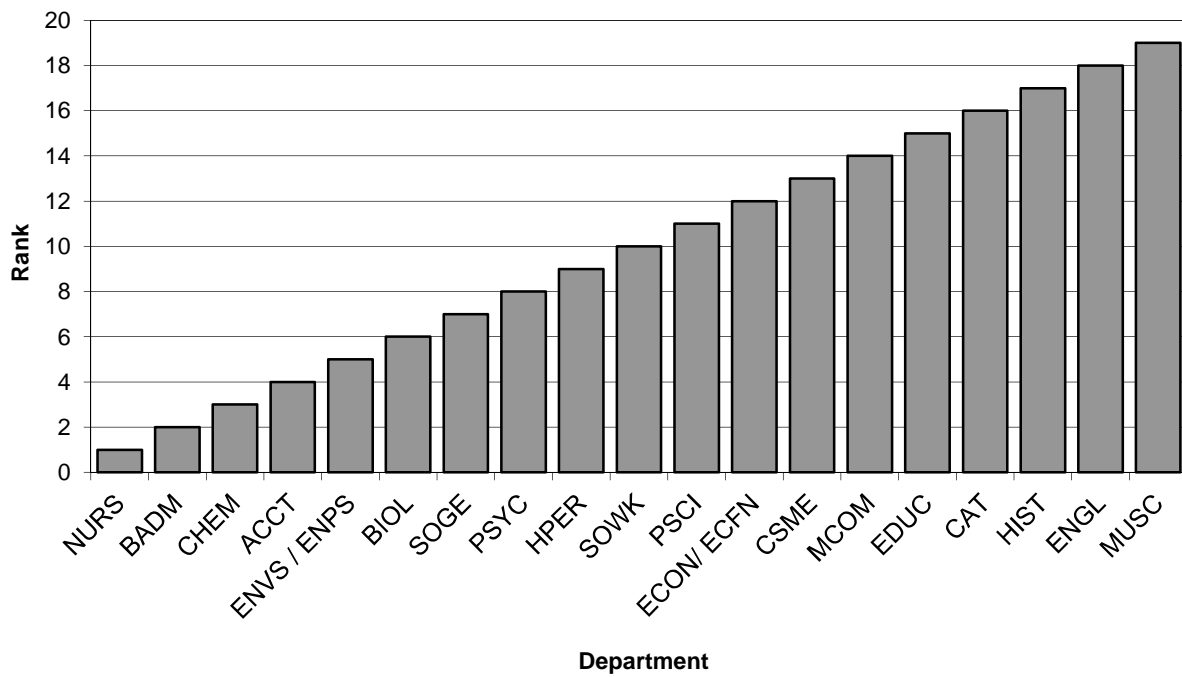
Table 14. SCH per FTE faculty, for non-General Studies / Core Curriculum Courses

Department	Fall 2015 numbers per FTE faculty				Fall 2011 - 2015 numbers per FTE faculty	
	FTE fac	SCH	SCH/FTE	SCH/FTE rank	Mean SCH/FTE	SCH/FTE rank
ACCT	3.50	846.00	241.71	4	253.41	4
BADM	11.65	2920.00	250.64	2	264.20	2
BIOL	5.45	1284.00	235.60	6	175.31	14
CAT	10.45	1596.00	152.73	16	158.87	17
CHEM	2.85	708.00	248.42	3	259.29	3
CSME	12.73	2138.00	167.95	13	176.32	13
ECON/ ECFN	3.25	570.00	175.38	12	197.08	9
EDUC	11.31	1754.00	155.08	15	168.47	16
ENGL	7.40	961.00	129.86	18	136.48	18
ENVS / ENPS	3.00	718.00	239.33	5	205.74	8
HIST	5.57	786.00	141.11	17	180.24	12
HPER	18.41	3630.00	197.18	9	206.26	7
MCOM	5.83	933.00	160.03	14	180.69	11
MUSC	13.21	1215.50	92.01	19	119.06	19
NURS	7.67	2685.00	350.07	1	281.62	1
PSCI	2.25	411.00	182.67	11	170.34	15
PSYC	7.95	1617.00	203.40	8	223.53	6
SOGE	5.42	1197.00	220.85	7	249.93	5
SOWK	3.08	576.00	187.01	10	194.36	10
Shepherd University	140.98	26546	188.29		194.69	

General Explanation/Definitions.

1. One faculty **FTE** (full-time equivalent) equals 12 hours of instructional responsibility.
2. **Majors** is the number of majors served by the program.
3. **Grads** is the number of graduates from the program.
4. **SCH** is the total number of credit hours taken by students in courses in the department.
5. **Rank** is a numerical ranking of the department based on the number in question. Ranks run from 1 (highest rank) to 19 (lowest rank). Note that all ranks are based on the numbers of majors, grads or SCH divided by the department's number of FTE faculty.
6. Numbers are for paid courses in undergraduate programs only.
7. Courses are all courses **not** explicitly listed as General Studies or Core Curriculum courses in the appropriate Shepherd course catalogs. All GSPE courses are considered General Studies, but no foreign language courses are included (as these are General Studies requirements for B.A. programs only). Also, the Core Curriculum requirements in Writing in the Major and Capstone in the Major are not considered as Core Curriculum courses here.
8. Faculty FTE numbers for General Studies / Core Curriculum courses cannot be directly or indirectly calculated from available data. Therefore, the numbers used here are calculated based on credit-hours of courses as taken by students, not as calculated for faculty workload reporting. This results in numbers discrepant from those used elsewhere for some departments.

Graph 14A. Overall rank, Fall 2015, non-GS/CC courses



Graph 14B. Overall rank, Fall 2011 - 2015, non-GS/CC courses

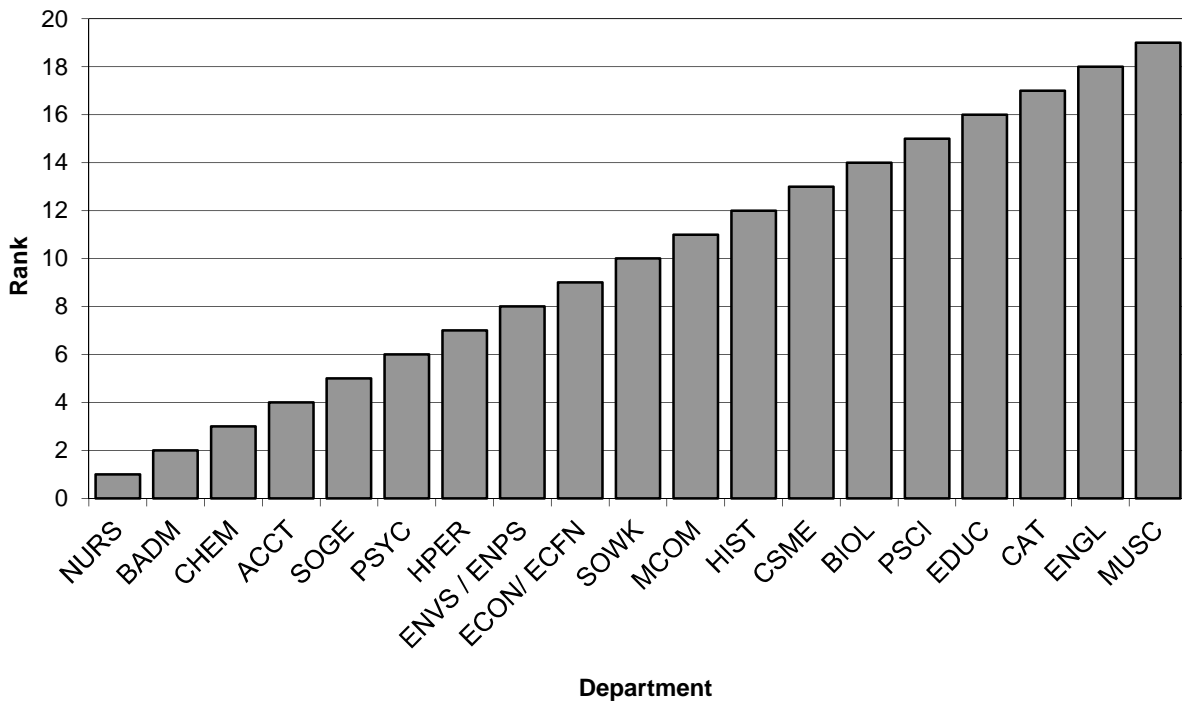


Table 15. SCH per FTE Faculty, for General Studies / Core Curriculum Courses

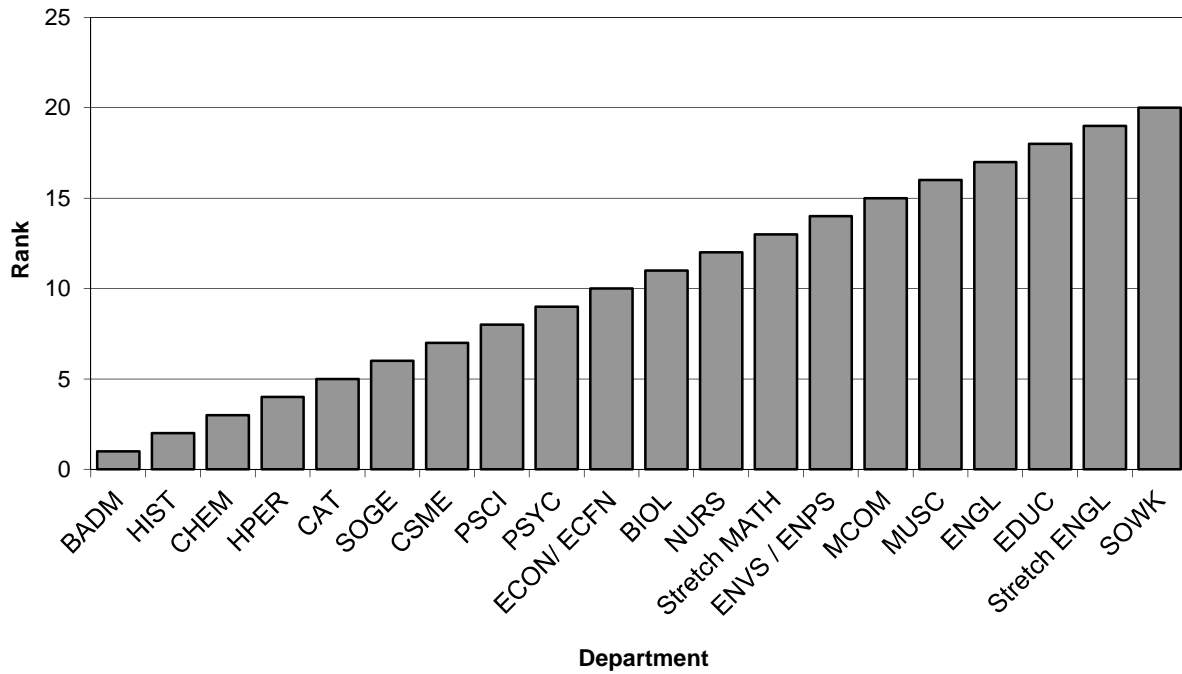
Department	Fall 2015 numbers per FTE faculty				Fall 2011 - 2015 numbers per FTE faculty	
	FTE fac	SCH	SCH/FTE	SCH/FTE rank	Mean SCH/FTE	SCH/FTE rank
ACCT						
BADM	0.75	306.00	408.00	1	391.50	1
BIOL	6.67	1824.00	273.46	11	265.76	13
CAT	2.50	762.00	304.80	5	314.04	4
CHEM	3.57	1146.00	321.01	3	311.05	5
CSME	6.00	1717.00	286.17	7	289.72	8
ECON/ ECFN	3.24	891.00	275.00	10	302.30	6
EDUC	1.75	360.00	205.71	18	229.66	17
ENGL	13.75	2982.00	216.87	17	239.00	15
ENVS / ENPS	3.67	891.00	242.78	14	232.64	16
HIST	6.24	2205.00	353.37	2	387.21	2
HPER	4.83	1474.00	305.18	4	283.39	10
MCOM	2.50	600.00	240.00	15	213.10	18
MUSC	2.17	482.00	222.12	16	254.22	14
NURS	0.50	132.00	264.00	12	282.00	11
PSCI	2.75	765.00	278.18	8	288.39	9
PSYC	3.00	831.00	277.00	9	292.20	7
SOGE	4.00	1173.00	293.25	6	349.17	3
SOWK	0.08	9.00	112.50	20	100.00	20
Stretch English	1.67	262.00	156.89	19	149.40	19
Stretch Math	2.83	736.00	260.07	13	276.98	12
Shepherd University	72.47	19548	269.74		277.62	

Shepherd University

General Explanation/Definitions.

1. One faculty **FTE** (full-time equivalent) equals 12 hours of instructional responsibility.
2. **Majors** is the number of majors served by the program.
3. **Grads** is the number of graduates from the program.
4. **SCH** is the total number of credit hours taken by students in courses in the department.
5. **Rank** is a numerical ranking of the department based on the number in question. Ranks run from 1 (highest rank) to 14 or 15 (lowest rank). Note that all ranks are based on the numbers of majors, grads or SCH divided by the department's number of FTE faculty.
6. Numbers are for paid courses in undergraduate programs only.
7. Courses are all courses explicitly listed as General Studies or Core Curriculum courses in the appropriate Shepherd course catalogs. All GSPE courses are considered General Studies, but no foreign language courses are included (as these are General Studies requirements for B.A. programs only). Also, the Core Curriculum requirements in Writing in the Major and Capstone in the Major are not considered as Core Curriculum courses here.
8. Faculty FTE numbers for General Studies / Core Curriculum courses cannot be directly or indirectly calculated from available data. Therefore, the numbers used here are calculated based on credit-hours of courses as taken by students, not as calculated for faculty workload reporting. This results in numbers discrepant from those used elsewhere for some departments.

Graph 15A. Overall rank, Fall 2015, GS/CC courses



Graph 15B. Overall rank, Fall 2011 - 2015, GS/CC courses

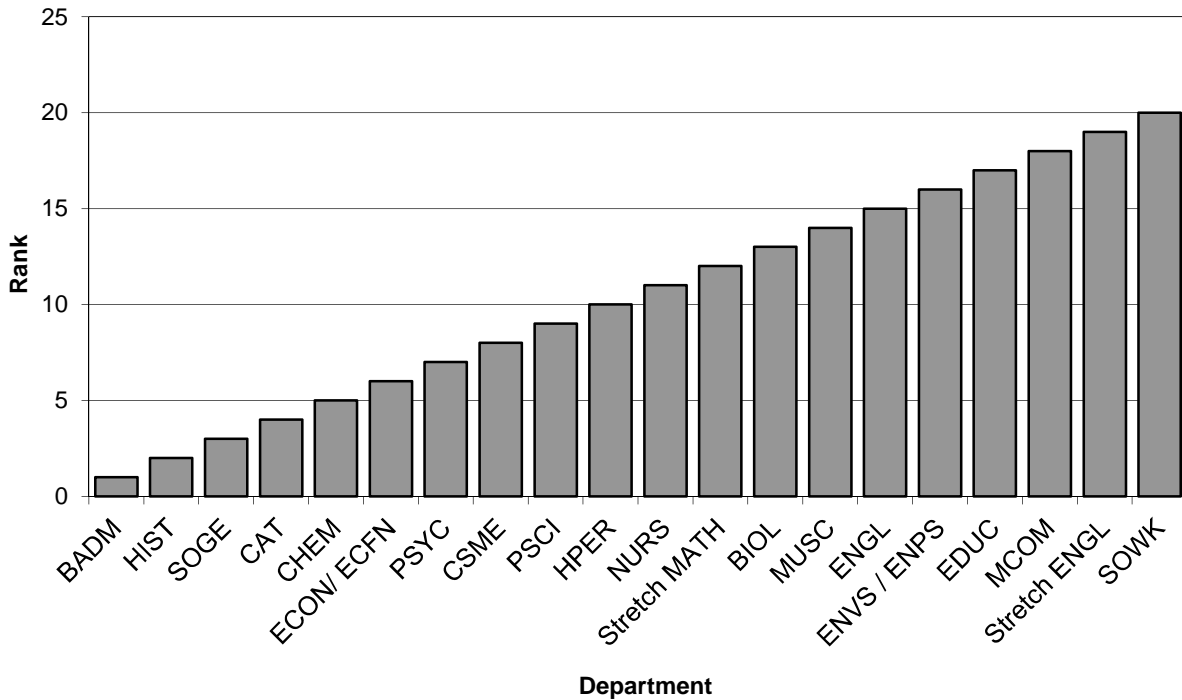


Table 16. Core Curriculum courses by time of day, Fall 2015

Time	Weekdays												Saturday	
	Monday		Tuesday		Wednesday		Thursday		Friday		Total		N	% tot
	N	% tot	N	% tot	N	% tot	N	% tot	N	% tot	N	% tot		
7:00 AM	3	0.4%	1	0.1%	3	0.3%	0	0.0%	0	0.0%	7	0.2%	0	0.0%
8:00 AM	25	2.9%	42	4.6%	28	3.1%	43	5.3%	19	3.2%	157	3.9%	1	3.3%
9:00 AM	76	9.0%	102	11.2%	78	8.7%	97	11.9%	64	10.9%	417	10.3%	7	23.3%
10:00 AM	109	12.8%	78	8.6%	111	12.4%	72	8.8%	92	15.6%	462	11.4%	7	23.3%
11:00 AM	115	13.5%	83	9.1%	113	12.6%	76	9.3%	96	16.3%	483	11.9%	8	26.7%
12:00 PM	93	11.0%	124	13.6%	94	10.5%	116	14.2%	75	12.7%	502	12.4%	4	13.3%
1:00 PM	76	9.0%	109	12.0%	76	8.5%	100	12.3%	70	11.9%	431	10.6%	1	3.3%
2:00 PM	85	10.0%	68	7.5%	86	9.6%	60	7.4%	77	13.1%	376	9.3%	1	3.3%
3:00 PM	72	8.5%	93	10.2%	78	8.7%	84	10.3%	56	9.5%	383	9.4%	1	3.3%
4:00 PM	38	4.5%	52	5.7%	55	6.1%	50	6.1%	25	4.2%	220	5.4%	0	0.0%
5:00 PM	39	4.6%	36	3.9%	50	5.6%	33	4.0%	10	1.7%	168	4.1%	0	0.0%
6:00 PM	42	4.9%	47	5.2%	45	5.0%	32	3.9%	4	0.7%	170	4.2%	0	0.0%
7:00 PM	41	4.8%	45	4.9%	37	4.1%	26	3.2%	1	0.2%	150	3.7%	0	0.0%
8:00 PM	26	3.1%	26	2.9%	27	3.0%	15	1.8%	0	0.0%	94	2.3%	0	0.0%
9:00 PM	8	0.9%	5	0.5%	13	1.4%	8	1.0%	0	0.0%	34	0.8%	0	0.0%
10:00 PM	1	0.1%	1	0.1%	3	0.3%	3	0.4%	0	0.0%	8	0.2%	0	0.0%
11:00 PM	0	0.0%	0	0.0%	0	0.0%	0	0.0%	0	0.0%	0	0.0%	0	0.0%
Total	849	20.9%	912	22.5%	897	22.1%	815	20.1%	589	14.5%	4062	100.0%	30	100.0%

Data derive from census-date Banner data.

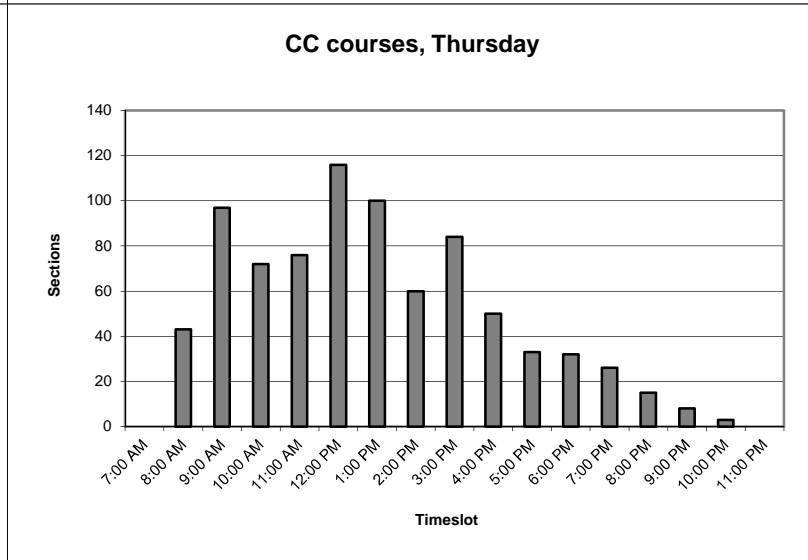
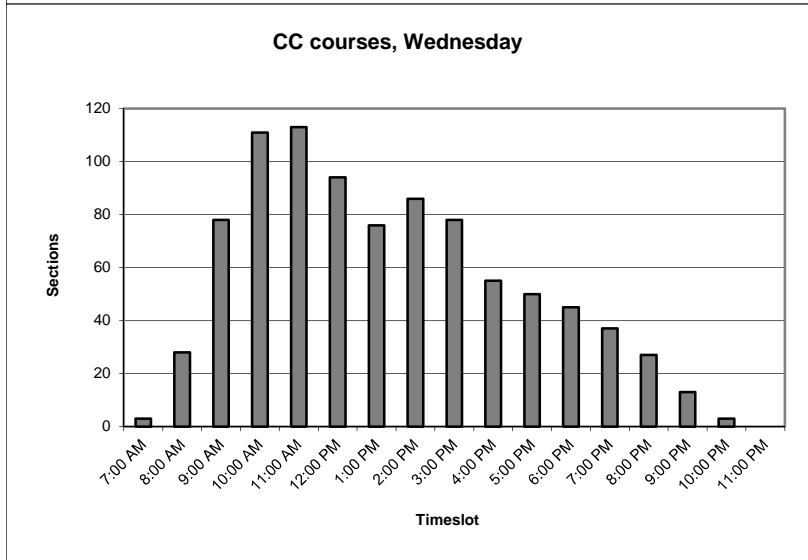
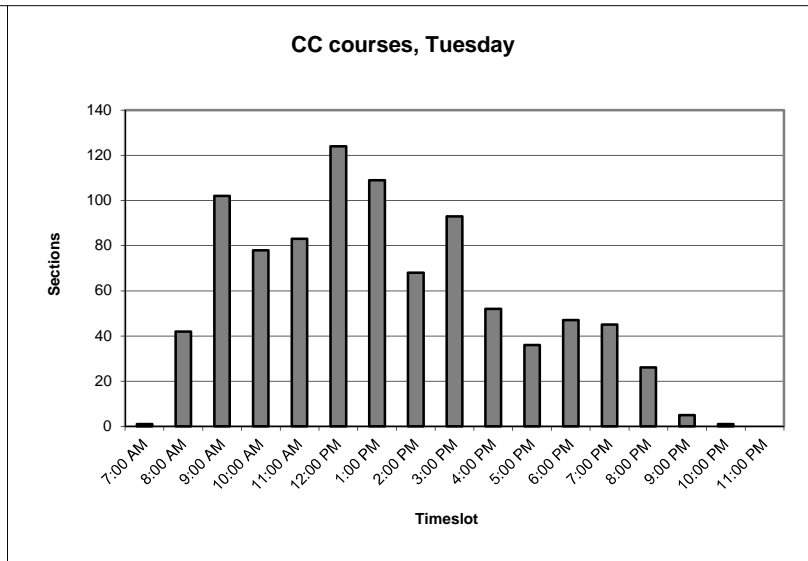
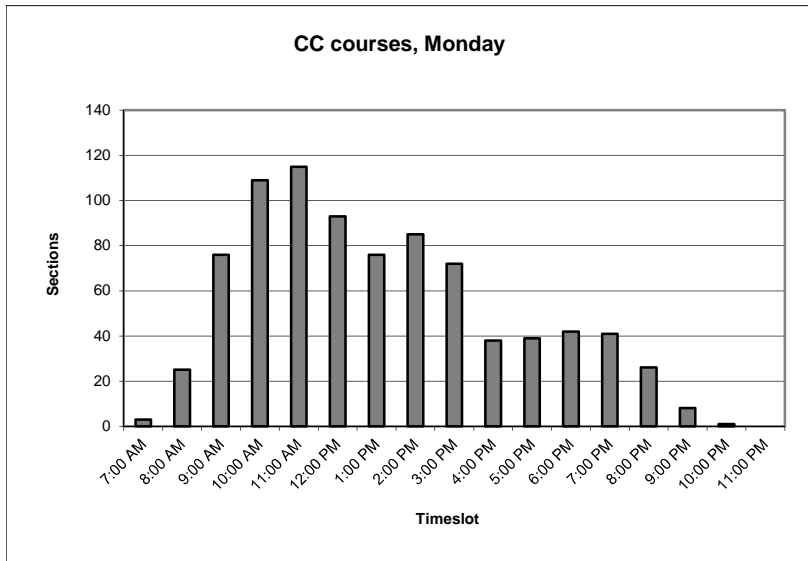
Courses are all courses explicitly listed as Core Curriculum courses in the current Shepherd catalog. The Core Curriculum requirements in Writing in the Major and Capstone in the Major are not included here.

"Time" indicates the timeslot in which the class is running. For example, "10:00 AM" courses are those courses that are in session from 10:00 AM to 10:59 AM. These courses may start at some point during that hour, or may have started earlier and still be in session for part or all of that hour.

"% tot" is the percentage of the column total. In the "Total" line, percentages are computed based upon the line total (excepting Saturdays).

Courses with no scheduled times in Banner ("TBA") are not included here. In Fall 2015, there were 86 of these.

Graphs 16A. Core Curriculum courses by time of day, Monday - Thursday



Graphs 16B. Core Curriculum courses by time of day, Friday, weekdays and Saturday

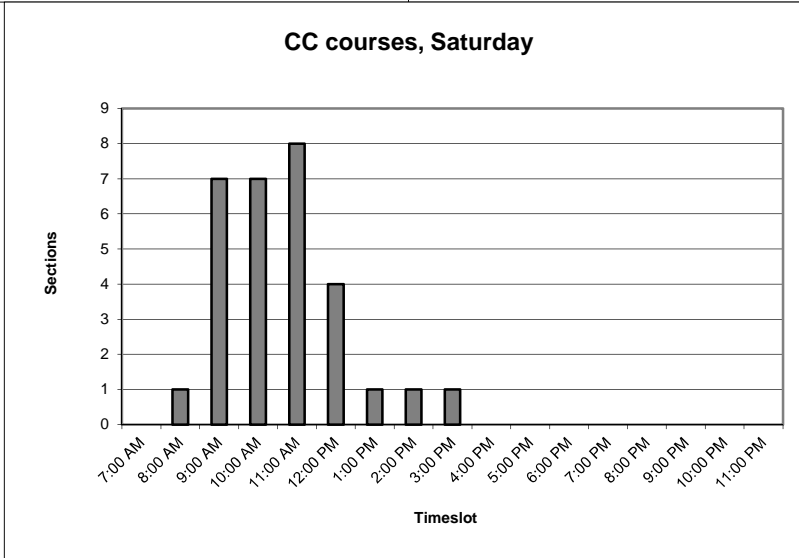
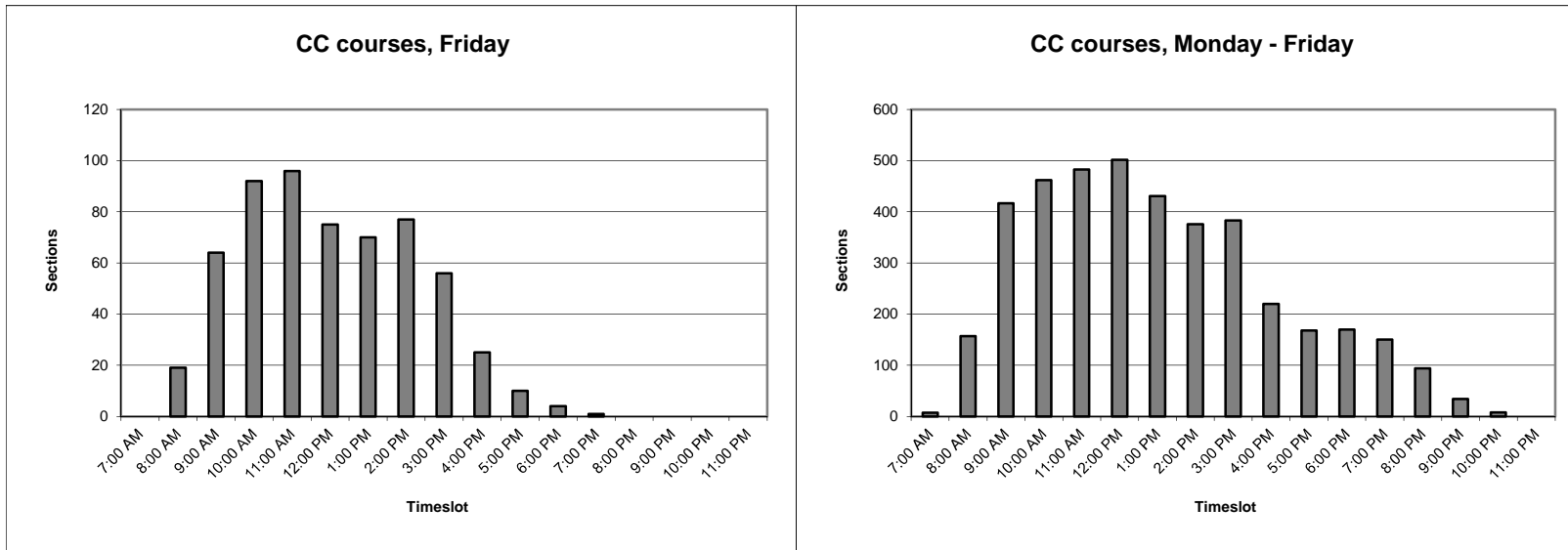


Table 17. Core Curriculum courses offered in standard timeslots, weekdays

Standard start time	Monday		Tuesday		Wednesday		Thursday		Friday		Saturday		Overall	
	N	%	N	%	N	%	N	%	N	%	N	%	N	%
Nonstandard	71	18.7%	88	23.8%	85	21.3%	74	21.8%	17	5.9%	9	100.0%	344	19.3%
Standard	308	81.3%	282	76.2%	315	78.8%	265	78.2%	269	94.1%	0	0.0%	1439	80.7%
Total	379	100.0%	370	100.0%	400	100.0%	339	100.0%	286	100.0%	9	100.0%	1783	100.0%

Data derive from census-date Banner data.

"Standard" start times are those listed in the Fall semester course catalog with defined final exam schedules. These are:
 MWF: 8:10 AM, 9:10 AM, 10:10 AM, 11:10 AM, 12:10 PM, 1:10 PM, 2:10 PM, 3:10 PM.
 TR: 8:10 AM, 9:35 AM, 11:00 AM, 12:25 PM, 1:50 PM, 3:15 PM.

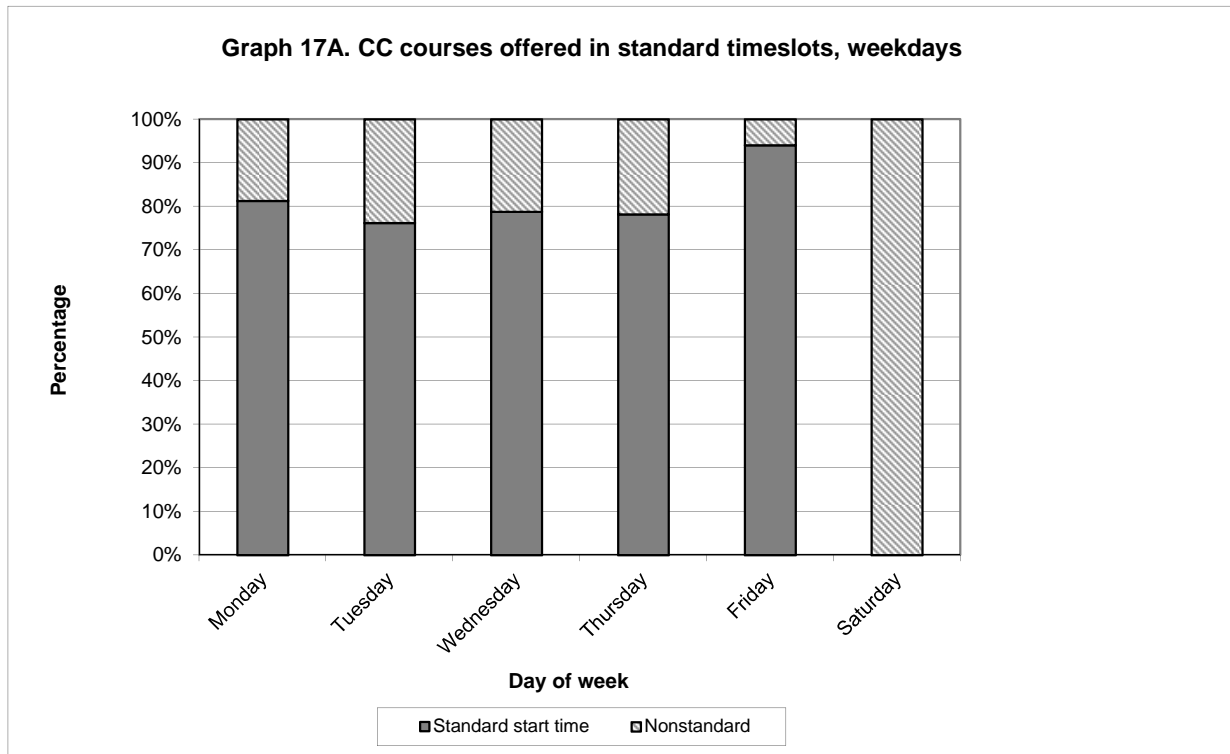


Table 18. Online and hybrid courses, Fall 2011 - Fall 2015

	Fall 2011		Fall 2012		Fall 2013		Fall 2014		Fall 2015		Total		Average	
	N	% all	N	% all	N	% all	N	% all	N	% all	N	% all	N	% all
Hybrid	1	0.1%	1	0.1%	2	0.2%	5	0.4%	6	0.5%	15	0.3%	3	0.3%
Online	18	1.5%	12	1.0%	17	1.5%	29	2.5%	38	3.4%	114	2.0%	22.8	2.0%
All courses	1193		1162		1147		1140		1119		5761		1152.2	

All data derive from HEPC census-date data submissions.

"Hybrid" courses are courses with more than 50% online delivery.

"Online" courses are those courses taught entirely online.

"Courses" are sections which receive a unique CRN from the Registrar.

"% all" is the percentage of all courses taught that semester represented by the line. For example, for Fall 2015, the 38 online courses represent 3.4% of the total of 1119 courses taught that semester.

The HEPC data from which these numbers derive allows for three categories of online courses up through Fall 2013:

100% non-traditional delivery (labeled as "Online" here)

50% - 99% non-traditional delivery (labeled as "Hybrid" here)

Less than 50% non-traditional delivery (included in "All courses", but not listed separately here)

"Non-traditional delivery" can include electronic or analog delivery (e.g., correspondence courses, satellite courses), but in practice usually indicates online delivery.

As of Fall 2014, the "50% - 99%" category is subdivided into "50% - 74%" and "75% - 99%" categories; I have summed these two back together into "Hybrid" here.

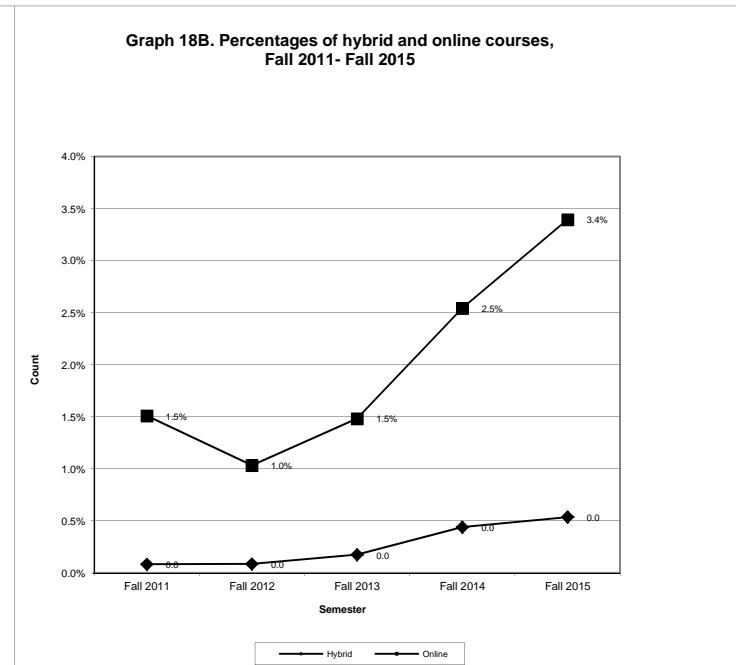
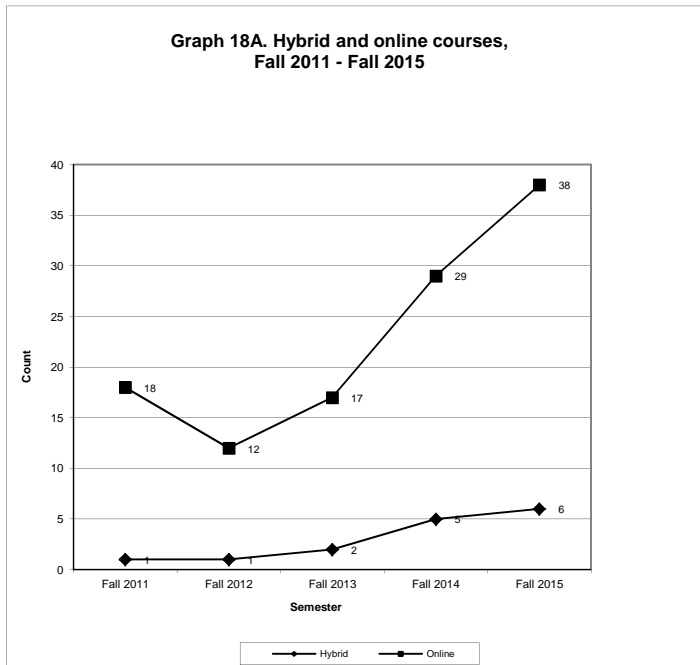


Table 19. Students Enrolled in Graduate Programs

Program	Fall 2011		Fall 2012		Fall 2013		Fall 2014		Fall 2015		Fall 2011-15	
	FTE	HC	FTE	HC	FTE	HC	FTE	HC	FTE	HC	Mean FTE	Change in FTE
Business Administration	39.25	75	44.83	80	47.75	79	52.83	78	41.00	65	45.13	1.75
Curriculum and Instruction	7.50	22	6.75	20	6.75	18	10.75	26	7.50	22	7.85	0.00
Music Education	2.00	8	1.58	7	1.50	6	3.00	10	2.00	5	2.02	0.00
Student Development and Administration	20.08	33	16.83	28	24.00	38	21.00	34	17.83	27	19.95	-2.25
Teaching	9.08	15	17.08	21	26.92	33	27.25	36	17.08	26	19.48	8.00
DNP	N/A	N/A	N/A	N/A	N/A	N/A	N/A	N/A	12.17	15	12.17	12.17
Shepherd University	77.91	153	87.07	156	106.92	174	114.83	184	96.50	159	96.65	18.59

General Explanation / Definitions.

1. The student **FTE** (full-time equivalent) equals 12 credit hours.
2. The **HC** is the headcount of students enrolled in and taking courses in the degree program.
3. The **mean FTE** is the average FTE for the years shown.
4. The **change in FTE** is the change in the FTE from the current year to the earliest year shown.
5. Each student is counted once in each program in which s/he is enrolled. Students enrolled in multiple programs are thus counted more than once. FTE and HC totals, however, are nonduplicated - each student is counted once regardless of the number of programs s/he is enrolled in. Thus, HC and FTE totals may not match totals across the individual programs.

Table 20. Graduates from Graduate Programs

Program	2010-11	2011-12	2012-13	2013-14	2014-15	Mean N	Change
Business Administration	26	21	31	35	40	30.6	14.0
Curriculum and Instruction	3	9	12	4	4	6.4	1.0
Music Education	0	6	4	0	3	2.6	3.0
Student Development and Administration	7	18	10	13	19	13.4	12.0
Teaching	2	11	4	12	11	8.0	9.0
DNP	N/A	N/A	N/A	N/A	N/A	N/A	N/A
Shepherd University	38	65	61	64	77	61.0	39.0

Numbers of graduates are computed using the fall, spring, and following summer of the stated year.

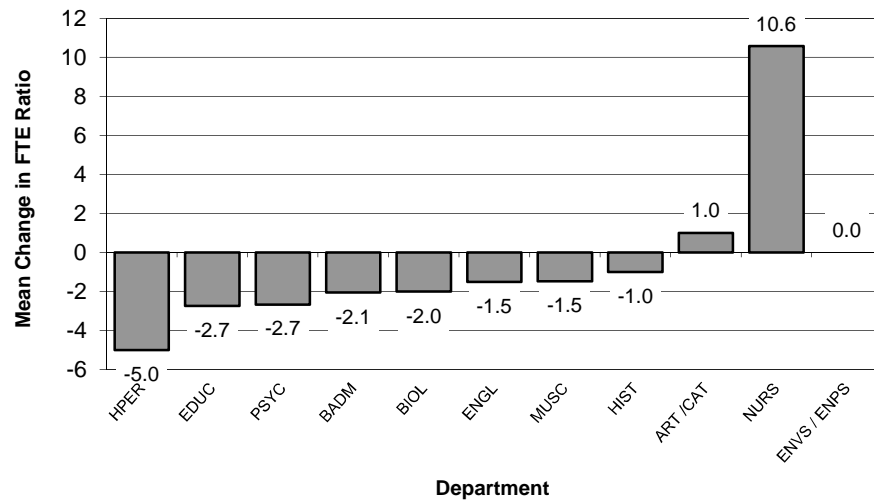
Table 21. Graduate Student to Faculty FTE Ratios

Department	Fall 2011			Fall 2012			Fall 2013			Fall 2014			Fall 2015				Fall 2011-15	
	F-FTE	S-FTE	Ratio	F-FTE	S-FTE	Ratio	F-FTE	S-FTE	Ratio	F-FTE	S-FTE	Ratio	F-FTE	S-FTE	Ratio	Change	Mean Ratio	Change in Ratio
CAT	0.00	0.00	N/A	0.00	0.00	N/A	0.00	0.00	N/A	0.25	0.25	1.00	0.25	0.25	1.00	0.00	0.67	1.00
BADM	4.25	41.75	9.82	3.75	44.25	11.80	5.25	48.25	9.19	5.48	54.00	9.85	5.50	42.75	7.77	-2.08	8.07	-2.05
BIOL	0.50	1.00	2.00	0.00	0.00	N/A	0.00	0.00	N/A	0.00	0.00	N/A	0.00	0.00	N/A	N/A	1.00	-2.00
EDUC	1.75	12.50	7.14	2.25	20.50	9.11	3.75	26.75	7.13	4.25	33.25	7.82	5.00	22.00	4.40	-3.42	5.94	-2.74
ENGL	0.50	0.75	1.50	0.25	0.75	3.00	0.50	0.75	1.50	0.25	0.50	2.00	0.00	0.00	N/A	-2.00	1.60	-1.50
ENVS / ENPS	0.00	0.00	N/A	0.00	0.00	N/A	0.00	0.00	N/A	0.00	0.00	N/A	0.00	0.00	N/A	N/A	0.00	N/A
HIST	0.25	0.25	1.00	0.25	0.25	1.00	0.00	0.00	N/A	0.00	0.00	N/A	0.00	0.00	N/A	N/A	0.67	-1.00
HPER	0.25	1.25	5.00	0.00	0.00	N/A	0.25	0.50	N/A	0.00	0.00	N/A	0.00	0.00	N/A	N/A	2.50	-5.00
MUSC	0.67	2.33	3.48	0.67	1.58	2.36	0.33	1.25	3.79	0.67	2.50	3.73	0.50	1.00	2.00	-1.73	2.56	-1.48
NURS	0.00	0.00	N/A	0.00	0.00	N/A	0.25	0.25	1.00	0.00	0.00	N/A	1.08	11.42	10.57	10.57	3.86	10.57
PSYC	1.50	20.00	13.33	1.58	16.83	10.65	1.50	24.00	16.00	1.50	21.00	14.00	1.50	16.00	10.67	-3.33	10.78	-2.67
Shepherd University	9.67	79.83	8.26	8.75	84.16	9.62	11.83	101.75	8.60	12.40	111.50	8.99	13.83	93.42	6.75	-2.24	7.04	-1.50

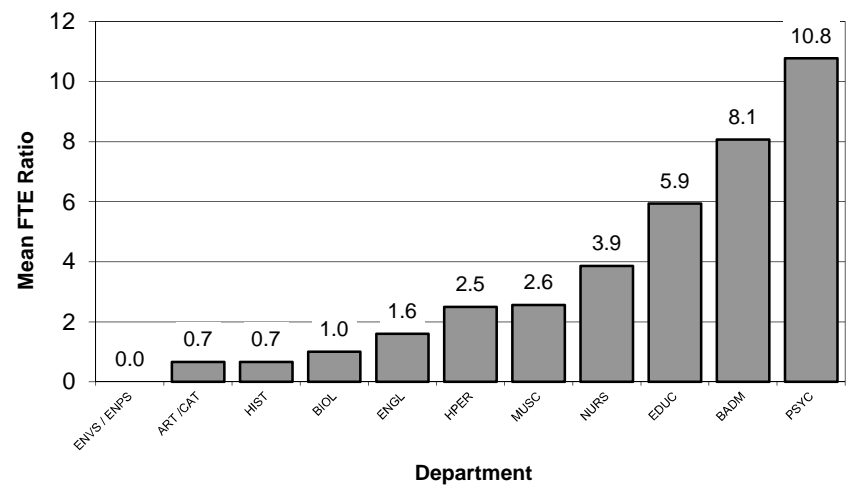
General Explanation/Definitions.

1. The **ratio** is obtained by dividing the student FTE by the faculty FTE.
2. One faculty **FTE** (full-time equivalent) equals 12 hours of instructional responsibility and one student FTE equals 12 credit hours. The ratio is the student FTE divided by the faculty FTE.
3. The annual **change** is the current year's ratio minus the prior year's ratio.
4. The **mean ratio** is the sum of the annual ratios divided by the number of years for which data exist.
5. The **change in ratio** is the current year's ratio minus the first year's ratio.
6. Numbers are for paid courses only.

Graph 20A: Mean Change in FTE Ratios (Student FTE: Faculty FTE) for Graduate Courses, 2011-2015 (from Table 20)



Graph 20B: Mean FTE Ratios (Student FTE: Faculty FTE) for Graduate Courses, 2011-2015 (from Table 20)



Except for Tables 22 and 29-31, all tables are for undergraduate degree-seeking students only and the census date (10/15/15) HEPC Student file is the source of data. Only credit-earning students are counted unless noted otherwise.

Table 22. Degree Targets

	Bacc	None	Master's	DNP	Total
4-Year	3321	433	144	15	3913

(Includes noncredit students)

Table 23. ACT and ACT Equivalent Scores by Residency

	ACT		ACT Equivalent		Total	
	N	Mean	N	Mean	N	Mean
Eastern Panhandle	1074	21.7	315	21.4	1389	21.7
<i>Berkeley</i>	666	21.7	132	20.8	798	21.5
<i>Jefferson</i>	362	21.9	172	21.7	534	21.8
<i>Morgan</i>	46	21.7	11	23.4	57	22.0
Other WV counties	234	23.1	9	22.3	243	23.1
MD	118	20.2	444	21.4	562	21.2
VA	40	20.2	175	20.9	215	20.7
PA	10	23.3	44	21.5	54	21.8
Other US states	22	20.9	45	20.2	67	20.4
International	0	0.0	3	19.7	3	19.7
Total	1498	21.8	1035	21.3	2533	21.6

National ACT scores, class of 2015:

Mean 21.0

WV ACT scores, class of 2015:

Mean 20.8

Note: Some students submitted both ACT and SAT scores at the time of admission. Students doing so chose one or the other as the preferred score type; only those scores are used for these tables. Some students submitted neither score.

Table 24. Status by Residency, Five-Year Trends

	Full-Time											
	Fall 2011		Fall 2012		Fall 2013		Fall 2014		Fall 2015		Total	
	N	%	N	%	N	%	N	%	N	%	N	%
Eastern Panhandle	1795	46.8%	1796	46.6%	1706	46.2%	1631	46.7%	1550	46.7%	8478	46.6%
<i>Berkeley</i>	1023	26.7%	1030	26.7%	993	26.9%	920	26.4%	902	27.2%	4868	26.8%
<i>Jefferson</i>	681	17.8%	675	17.5%	638	17.3%	633	18.1%	581	17.5%	3208	17.6%
<i>Morgan</i>	91	2.4%	91	2.4%	75	2.0%	78	2.2%	67	2.0%	402	2.2%
Other WV counties	324	8.4%	327	8.5%	297	8.0%	255	7.3%	251	7.6%	1454	8.0%
MD	795	20.7%	808	21.0%	770	20.8%	745	21.4%	718	21.6%	3836	21.1%
VA	385	10.0%	357	9.3%	333	9.0%	300	8.6%	263	7.9%	1638	9.0%
PA	72	1.9%	71	1.8%	70	1.9%	56	1.6%	61	1.8%	330	1.8%
Other US states	96	2.5%	108	2.8%	99	2.7%	89	2.6%	81	2.4%	473	2.6%
International	10	0.3%	15	0.4%	13	0.4%	14	0.4%	10	0.3%	62	0.3%
Total	3477	90.6%	3482	90.4%	3288	89.0%	3090	88.6%	2934	88.4%	16271	89.4%

	Part-Time											
	Fall 2011		Fall 2012		Fall 2013		Fall 2014		Fall 2015		Total	
	N	%	N	%	N	%	N	%	N	%	N	%
Eastern Panhandle	260	6.8%	264	6.9%	285	7.7%	279	8.0%	282	8.5%	1370	7.5%
<i>Berkeley</i>	145	3.8%	149	3.9%	161	4.4%	150	4.3%	164	4.9%	769	4.2%
<i>Jefferson</i>	104	2.7%	107	2.8%	118	3.2%	119	3.4%	107	3.2%	555	3.1%
<i>Morgan</i>	11	0.3%	8	0.2%	6	0.2%	10	0.3%	11	0.3%	46	0.3%
Other WV counties	11	0.3%	16	0.4%	14	0.4%	14	0.4%	14	0.4%	69	0.4%
MD	58	1.5%	57	1.5%	51	1.4%	52	1.5%	49	1.5%	267	1.5%
VA	20	0.5%	22	0.6%	41	1.1%	37	1.1%	34	1.0%	154	0.8%
PA	6	0.2%	5	0.1%	7	0.2%	10	0.3%	4	0.1%	32	0.2%
Other US states	4	0.1%	5	0.1%	9	0.2%	6	0.2%	3	0.1%	27	0.1%
International	0	0.0%	1	0.0%	0	0.0%	1	0.0%	0	0.0%	2	0.0%
Total	359	9.4%	370	9.6%	407	11.0%	399	11.4%	386	11.6%	1921	10.6%

	Total											
	Fall 2011		Fall 2012		Fall 2013		Fall 2014		Fall 2015		Total	
	N	%	N	%	N	%	N	%	N	%	N	%
Eastern Panhandle	2055	53.6%	2060	53.5%	1991	53.9%	1910	54.7%	1832	55.2%	9848	54.1%
<i>Berkeley</i>	1168	30.4%	1179	30.6%	1154	31.2%	1070	30.7%	1066	32.1%	5637	31.0%
<i>Jefferson</i>	785	20.5%	782	20.3%	756	20.5%	752	21.6%	688	20.7%	3763	20.7%
<i>Morgan</i>	102	2.7%	99	2.6%	81	2.2%	88	2.5%	78	2.3%	448	2.5%
Other WV counties	335	8.7%	343	8.9%	311	8.4%	269	7.7%	265	8.0%	1523	8.4%
MD	853	22.2%	865	22.5%	821	22.2%	797	22.8%	767	23.1%	4103	22.6%
VA	405	10.6%	379	9.8%	374	10.1%	337	9.7%	297	8.9%	1792	9.9%
PA	78	2.0%	76	2.0%	77	2.1%	66	1.9%	65	2.0%	362	2.0%
Other US states	100	2.6%	113	2.9%	108	2.9%	95	2.7%	84	2.5%	500	2.7%
International	10	0.3%	16	0.4%	13	0.4%	15	0.4%	10	0.3%	64	0.4%
Total	3836	100.0%	3852	100.0%	3695	100.0%	3489	100.0%	3320	100.0%	18192	100.0%

All percentages for each year are computed based upon the total students for each year. For example, for Fall 2015, the 1550 full-time students in the Eastern Panhandle are 46.7% of the total number of students in Fall 2015 (3320). Tables include undergraduate degree-seeking credit students only.

Table 25. ACT and ACT Equivalent Scores by Residency

	ACT or ACT Equivalent										Total	Mean
	16 or lower	17	18	19	20	21	22	23-25	26-30	31 or higher	N	
WV	62	108	146	143	155	173	172	414	239	20	1632	21.9
MD	23	62	64	54	68	52	59	119	54	7	562	21.2
VA	4	27	27	36	23	22	20	36	18	2	215	20.7
PA	1	6	6	4	6	7	1	12	10	1	54	21.8
Other US states	2	11	7	10	9	7	8	7	6	0	67	20.4
International	1	0	0	0	0	0	1	1	0	0	3	19.7
Total	93	214	250	247	261	261	261	589	327	30	2533	21.6

Note: Some students submitted both ACT and SAT scores at the time of admission. Students doing so chose one or the other as the preferred score type; only those scores are used for these tables. Some students submitted neither score.

Table 26. Class Level by Residency

	Freshmen		Sophomore		Junior		Senior		Unclassified		Total	
	N	Percent	N	Percent	N	Percent	N	Percent	N	Percent	N	Percent
Panhandle	456	13.7%	354	10.7%	442	13.3%	577	17.4%	3	0.1%	1832	55.2%
<i>Berkeley</i>	272	8.2%	190	5.7%	265	8.0%	337	10.2%	2	0.1%	1066	32.1%
<i>Jefferson</i>	163	4.9%	145	4.4%	159	4.8%	220	6.6%	1	0.0%	688	20.7%
<i>Morgan</i>	21	0.6%	19	0.6%	18	0.5%	20	0.6%	0	0.0%	78	2.3%
Other WV counties	83	2.5%	52	1.6%	52	1.6%	77	2.3%	1	0.0%	265	8.0%
MD	198	6.0%	139	4.2%	191	5.8%	239	7.2%	0	0.0%	767	23.1%
VA	86	2.6%	52	1.6%	65	2.0%	94	2.8%	0	0.0%	297	8.9%
PA	20	0.6%	9	0.3%	16	0.5%	20	0.6%	0	0.0%	65	2.0%
Other US states	31	0.9%	11	0.3%	24	0.7%	18	0.5%	0	0.0%	84	2.5%
International	2	0.1%	0	0.0%	3	0.1%	5	0.2%	0	0.0%	10	0.3%
Total	876	26.4%	617	18.6%	793	23.9%	1030	31.0%	4	0.1%	3320	100.0%

**Table 27. Retention of Fall 2014
Freshman Cohort by Residency**

	Freshmen	Returned	Percent
Eastern Panhandle	327	233	71.3%
<i>Berkeley</i>	184	128	69.6%
<i>Jefferson</i>	119	87	73.1%
<i>Morgan</i>	24	18	75.0%
Other WV counties	58	35	60.3%
MD	164	104	63.4%
VA	62	30	48.4%
PA	11	11	100.0%
Other US states	12	6	50.0%
International	0	0	#DIV/0!
Total	634	419	66.1%

Full-time first-time-in-college freshmen who enrolled in Fall 2014 and were still enrolled as of Fall 2015. Students who withdrew after enrolling this semester are included.

**Table 28. Graduation of Fall 2009
Freshman Cohort by Residency**

	Bacc. grads	Percent
Eastern Panhandle	185	49.2%
<i>Berkeley</i>	102	27.1%
<i>Jefferson</i>	69	18.4%
<i>Morgan</i>	14	3.7%
Other WV counties	49	13.0%
MD	88	23.4%
VA	32	8.5%
PA	12	3.2%
Other US states	9	2.4%
International	1	0.3%
Total	376	100.0%

In Fall 2008, 786 entering full-time, first-time-in-college freshmen declared that they were seeking baccalaureate degrees. From this group, 376 students were awarded baccalaureate degrees by August 2015.

Table 29. Student Headcount by Registration Type

Type	Fall 2011		Fall 2012		Fall 2013		Fall 2014		Fall 2015		Change 2011-15	
	Head	Percent	Head	Percent	Head	Percent	Head	Percent	Head	Percent	N	Percent
Returning	2671	60.8%	2695	62.3%	2703	64.0%	2602	64.4%	2364	61.5%	-307	-11.5%
New Freshmen	794	18.1%	756	17.5%	684	16.2%	642	15.9%	638	16.6%	-156	-19.6%
Readmitted	55	1.3%	48	1.1%	58	1.4%	43	1.1%	44	1.1%	-11	-20.0%
Transient/Special	393	8.9%	296	6.8%	334	7.9%	356	8.8%	361	9.4%	-32	-8.1%
High School	11	0.3%	22	0.5%	19	0.5%	13	0.3%	21	0.5%	10	90.9%
Transfer	424	9.7%	450	10.4%	355	8.4%	322	8.0%	370	9.6%	-54	-12.7%
First Time Grad	45	1.0%	59	1.4%	68	1.6%	63	1.6%	48	1.2%	3	6.7%
Total	4393	100.0%	4326	100.0%	4221	100.0%	4041	100.0%	3846	100.0%	-547	-12.5%

Table 30. Student FTE by Registration Type

Registration Type	Fall 2011		Fall 2012		Fall 2013		Fall 2014		Fall 2015		Change 2011-15	
	FTE	Percent	FTE	Percent	FTE	Percent	FTE	Percent	Head	Percent	N	Percent
Returning	2524	65.8%	2501	66.3%	2503	68.7%	2395	59.3%	2181	56.7%	-343	-13.6%
New Freshmen	793	20.7%	748	19.8%	679	18.6%	639	15.8%	645	16.8%	-149	-18.8%
Readmitted	37	1.0%	34	0.9%	40	1.1%	30	0.7%	23	0.6%	-14	-38.8%
Transient/Special	78	2.0%	56	1.5%	64	1.8%	71	1.8%	73	1.9%	-5	-6.4%
High School	3	0.1%	5	0.1%	4	0.1%	3	0.1%	5	0.1%	2	81.9%
Transfer	376	9.8%	390	10.3%	307	8.4%	276	6.8%	313	8.1%	-63	-16.7%
First Time Grad	25	0.7%	41	1.1%	45	1.2%	44	1.1%	31	0.8%	5	20.8%
Total	3837	100.0%	3774	100.0%	3642	100.0%	3458	85.6%	3270	85.0%	-567	-14.8%

Table 31. Student Headcount by Race and Ethnicity

Race / ethnicity	Fall 2011		Fall 2012		Fall 2013		Fall 2014		Fall 2015		Change 2011-15	
	Head	Percent	Head	Percent	Head	Percent	Head	Percent	Head	Percent	N	Percent
Hispanic	122	2.8%	120	2.8%	112	2.7%	116	2.9%	107	2.8%	-15	-12.3%
Am Ind/Alaskan	35	0.8%	27	0.6%	23	0.5%	26	0.6%	21	0.5%	-14	-40.0%
Black	290	6.6%	303	7.0%	333	7.9%	324	8.0%	342	8.9%	52	17.9%
White	3597	81.9%	3582	82.8%	3524	83.5%	3394	84.0%	3177	82.3%	-420	-11.7%
Asian	74	1.7%	80	1.8%	84	2.0%	74	1.8%	94	2.4%	20	27.0%
Nat HI / OPI	3	0.1%	5	0.1%	6	0.1%	3	0.1%	3	0.1%	0	0.0%
Two or more	14	0.3%	9	0.2%	10	0.2%	35	0.9%	63	1.6%	49	350.0%
Unknown	258	5.9%	200	4.6%	129	3.1%	69	1.7%	54	1.4%	-204	-79.1%
Total	4393	100.0%	4326	100.0%	4221	100.0%	4041	100.0%	3861	100.0%	-532	-12.1%

Sources for these tables are census date HEPC files.
Data are for credit students only.

Note. As of 2009-10, the new federal categories for race and ethnicity are in use.

Prior to 2009-10, the race / ethnicity classifications were mutually exclusive (only one could be selected). They were abbreviated as follows.

- Black / Af. Amer:** Black or African American
- Amer. Ind. / Alaskan:** American Indian / Native American or Alaskan
- Asian / Pac. Isl.:** Asian or Pacific Islander
- Hispanic:** Hispanic
- White:** White / Caucasian
- Unknown / NR:** Unknown or not reported

Beginning in 2009-10, the following changes were made.

Hispanic is a separate ethnicity designation, independent of the race categories.

The two categories **Asian** and **Native Hawaiian or other Pacific Islander** replace the single category **Asian / Pac. Isl.**

Two or more includes those students claiming two or more races. (More than one race category can be selected.)

Table 32. Shepherd University FTE by Department and Instructor

Dept	L_name	F_name	Faculty UG FTE	Student UG FTE	UG S/F Ratio	Faculty G FTE	Student G FTE	G S/F Ratio
0000	ALEXANDER	KEITH	.25	2.80	11.20	.	.	.
	ANDERSON	SCOTT	.08	.43	5.20	.	.	.
	BAKER	EVORA	.08	.67	8.00	.	.	.
	BRASHER	SALLY	.25	3.00	12.00	.	.	.
	BREMER	ANNE	.08	.93	11.20	.	.	.
	CANTRELL	MARK	.50	7.00	14.00	.	.	.
	CARROLL	COURTNEY	.08	.47	5.60	.	.	.
	CAUVEL	ELIZABETH	.08	.80	9.60	.	.	.
	COLE	DAVID	.08	.43	5.20	.	.	.
	COLLINS	THOMAS	.08	.40	4.80	.	.	.
	COPNEY	CYNTHIA	.08	.80	9.60	.	.	.
	CRUM	RACHEL	.17	1.60	9.60	.	.	.
	ELLZEY	MARY	.25	3.00	12.00	.	.	.
	FERANCOVA	RADKA	.08	.53	6.40	.	.	.
	FLOCCO	JULIA	.08	.93	11.20	.	.	.
	GARLAND	AMELIA	.08	.87	10.40	.	.	.
	GROSS	EMILY	.08	.87	10.40	.	.	.
	HOLLIDAY	SHANNON	.08	1.67	20.00	.	.	.
	KLEIN	JAMES	.08	.60	7.20	.	.	.
	LEADINGHAM	JEANETTE	.08	.93	11.20	.	.	.
	MEADS	RACHAEL	.08	.80	9.60	.	.	.
	MILLER	JENNIFER	.08	.87	10.40	.	.	.
	MONSMA	MICHAEL	.08	.53	6.40	.	.	.
	MORENO	JOSE	.08	.87	10.40	.	.	.
	NIXON	TIMOTHY	.25	2.80	11.20	.	.	.
	PANNILL	KELLY	.17	1.80	10.80	.	.	.
	RICKETTS	MICHELLE	.08	.60	7.20	.	.	.
	ROCKWELL	GENA	.08	.93	11.20	.	.	.
	SANDY	JULIA	.25	3.40	13.60	.	.	.
	SEFFERS	TRACY	.08	.87	10.40	.	.	.
Subtotal dept			3.92	42.20		.	.	

Fall 2014: SU FTEs by Department

Dept	L_name	F_name	Faculty UG FTE	Student UG FTE	UG S/F Ratio	Faculty G FTE	Student G FTE	G S/F Ratio
ACCT	FILES	MICHELLE	.25	4.20	16.80	.	.	.
	HAMOOD	ROGER	.75	14.80	18.60	.	.	.
	SLOUGH	JOHN	.25	1.40	5.60	.	.	.
	VANCE	CYNTHIA	.75	14.40	19.40	.	.	.
	WILLIAMS	DANIEL	1.25	21.60	17.40	.	.	.
Subtotal dept			3.25	56.40		.	.	
BADM	ANDERSON	DOUGLAS25	2.25	9.00
	AYTAC	BERRIN25	3.50	14.00
	CORPUS	KATHLEEN	.92	14.20	15.90	.	.	.
	DAILEY	MICHAEL	.75	10.00	13.33	.	.	.
	DEMERRITT	GORDON	.75	8.60	11.47	.25	2.75	11.00
	DIXON	MICHAEL	.24	6.00	24.80	.	.	.
	DOBISH	HEIDI	.25	4.40	17.60	.	.	.
	FILES	MICHELLE25	2.00	8.00
	GALLIGAN	MARY	1.00	24.80	24.80	.	.	.
	GOCMEN	TUNCER25	1.50	6.00
	GROSS	DAVID	.25	8.00	32.00	.	.	.
	HAUSE	SPEDDEN75	7.75	10.33
	HILLMAN	DONALD	.50	9.80	19.60	.	.	.
	ISHERWOOD	ALEX50	1.75	3.50
	LARSON	LINDSEY	.25	6.00	24.00	.	.	.
	LEGGETT	LANA50	4.00	8.00
	LORENZEN	PATRICIA	.25	2.80	11.20	.	.	.
	MAIDEN	KATHLEEN	.25	7.60	30.40	.	.	.
	MILLER	JENNIFER	.33	3.73	11.20	.	.	.
	NIELSEN	SAMARA	.25	7.80	31.20	.	.	.
	PERRY	CYDNE	1.07	21.73	20.62	.	.	.
	POLOGEORGIS	NICOLAS	.75	6.80	9.07	.25	3.75	15.00
	REID	KATHLEEN	.25	12.20	48.80	.	.	.
	RICE	JOSEPH	.25	3.00	12.00	.	.	.
	SANDSTROM	DIRK75	3.00	4.00
	SCALES	CINDA	1.00	12.40	12.40	.	.	.
	SHAW	MARY25	.75	3.00
	VANCE	CYNTHIA25	2.75	11.00

Fall 2014: SU FTEs by Department

Dept	L_name	F_name	Faculty UG FTE	Student UG FTE	UG S/F Ratio	Faculty G FTE	Student G FTE	G S/F Ratio
	XIE	YUYING25	.25	1.00
	YORK	JUDY50	1.25	2.50
	ZIMMER	WILLIAM	1.06	11.00	10.35	.25	5.50	22.00
Subtotal dept			10.37	180.87		5.50	42.75	
BIOL	ANDERSEN	ELLEN	.67	12.53	18.80	.	.	.
	CONLEY	RUTH	1.00	17.07	17.07	.	.	.
	GILKERSON	JONATHAN	1.00	13.87	13.87	.	.	.
	HENDRICKSON-LAM	SHER	.67	9.33	14.00	.	.	.
	LESSER	MARK	1.00	18.40	18.40	.	.	.
	MCKENNA	KERRY	.33	6.13	18.40	.	.	.
	MENKE	JAY	1.00	29.33	29.33	.	.	.
	PENNOCK	DAVID	.67	12.80	19.20	.	.	.
	PLAUTZ	CAROL	1.12	24.00	20.33	.	.	.
	ROBERTSON	LAURA	1.00	15.20	15.20	.	.	.
	SIMPSON	PHILLIP	1.00	17.60	17.60	.	.	.
	WARD	MARY	.67	12.27	18.40	.	.	.
	WING	DAVID	1.00	18.67	18.67	.	.	.
Subtotal dept			11.12	207.20		.	.	
CAT	BENEFIEL	CHRISTIAN	1.00	9.60	9.60	.	.	.
	BOGGESS	EVAN	.75	7.20	9.60	.	.	.
	BONE STEELE	ERIN	.50	7.00	14.00	.	.	.
	BRUNER	RICK	1.00	13.40	12.93	.	.	.
	CARNEY	SUSAN	.25	2.80	11.20	.	.	.
	COLTRIN	CHRISTOPHER	1.00	14.80	14.40	.	.	.
	CRAIG	JAMES	.75	21.60	28.80	.	.	.
	FARMER	ROBERT	.73	7.60	10.35	.	.	.
	HARNER	JILL	.25	2.80	11.20	.	.	.
	HERENDEEN	EDWARD	.75	1.00	1.60	.	.	.
	HIUNI	DAHN	.50	7.60	15.20	.	.	.
	KUGLER	TRENT	.25	.40	1.60	.	.	.
	LEVITON	ADAM	.25	2.00	8.00	.	.	.
	MCCARTHY	SHANNON	1.00	12.20	13.47	.	.	.
	MENDEZ	MICHAEL	.75	11.40	15.20	.	.	.
	MODLER	DAVID	.50	6.60	13.20	.	.	.

Fall 2014: SU FTEs by Department

Dept	L_name	F_name	Faculty UG FTE	Student UG FTE	UG S/F Ratio	Faculty G FTE	Student G FTE	G S/F Ratio
	ROBINSON	ELIZABETH	.75	9.60	12.80	.	.	.
	SMITH	RHONDA	.97	16.60	17.03	.25	.25	1.00
	WEBSTER	LAUREL	.25	2.80	11.20	.	.	.
Subtotal dept			12.20	157.00		.25	.25	
CHEM	BOZENKO	JOSEPH	.25	2.40	9.60	.	.	.
	COLE	JACQUELYN	1.00	22.20	22.20	.	.	.
	DILELLA	DAN	.86	16.20	20.02	.	.	.
	HASSLER	KYLE	1.25	22.87	18.29	.	.	.
	LI	MENGYANG	.99	16.40	14.56	.	.	.
	MADER	JORDAN	.99	15.47	15.64	.	.	.
	MARGEVICH	MAUREEN	.33	5.80	17.40	.	.	.
	WARBURTON	ROBERT	.75	22.27	29.54	.	.	.
Subtotal dept			6.42	123.60		.	.	
COMM	BLACK	THOMAS	.25	4.00	16.00	.	.	.
	CASE	JOHN	.25	2.00	8.00	.	.	.
	FRIDGEN	PATRICIA	.50	8.00	16.00	.	.	.
	GAY	ANDREW	.25	3.40	13.60	.	.	.
	KUSHIN	MATTHEW	1.00	13.40	14.27	.	.	.
	LEVINE	MONICA	1.25	14.60	11.68	.	.	.
	MASON	CECELIA	.25	2.80	11.20	.	.	.
	MCGOUGH	MICHAEL	.75	12.00	16.00	.	.	.
	MCKAHAN	JASON	1.00	14.00	14.00	.	.	.
	MESSERLI	SHERRI	.75	12.00	16.00	.	.	.
	REILLY	CHERYL	.25	4.00	16.00	.	.	.
	WILLIAMS	KEVIN	1.00	12.00	12.00	.	.	.
Subtotal dept			7.50	102.20		.	.	
CSME	ADAMS	KAREN	1.00	16.53	16.53	.	.	.
	AYTAC	BERRIN	.50	11.60	23.20	.	.	.
	FAUBLE	HEATHER	.50	5.40	10.80	.	.	.
	FORD	HOWARD	.33	4.27	12.80	.	.	.
	GHAHREMANI	MOHAMMADREZA	1.00	6.40	6.25	.	.	.
	GIL-ZAMBRANO	JOSE	.75	17.80	23.73	.	.	.
	GORNEFF	SERGE	.50	10.20	20.40	.	.	.
	GUZIDE	OSMAN	1.00	9.20	9.20	.	.	.

Fall 2014: SU FTEs by Department

Dept	L_name	F_name	Faculty UG FTE	Student UG FTE	UG S/F Ratio	Faculty G FTE	Student G FTE	G S/F Ratio
	IRWIN	PATRICIA	.75	14.00	18.67	.	.	.
	KOEPPING	KITTY	.50	8.00	16.00	.	.	.
	LIAO	WEIDONG	1.07	17.00	15.87	.	.	.
	MARTIN	NICHOLAS	1.00	11.20	16.53	.	.	.
	MILLS	DONALD	1.16	16.40	13.28	.	.	.
	MIRDAMADI	REZA	1.08	14.47	12.04	.	.	.
	MORTENSEN	YOONJA	.75	18.00	24.00	.	.	.
	PAGE	LAURA	.50	8.40	16.80	.	.	.
	RODRIGUEZ	PAUL	.25	2.60	10.40	.	.	.
	ROMANO	JAMES	1.00	19.20	19.20	.	.	.
	VON ALT	WILLIAM	.25	5.20	20.80	.	.	.
	WANG	ZHIJUN	1.00	14.40	16.00	.	.	.
	WANG	QING	.67	10.93	16.40	.	.	.
	WOJTOWICZ	RALPH	1.00	15.80	15.80	.	.	.
	Subtotal dept		16.56	257.00		.	.	
ECFN	BROPLEH	RUDOLPH	.75	16.20	21.60	.	.	.
	GOCMEN	TUNCER	.75	14.20	20.20	.	.	.
	KINNEY	LINDA	1.00	13.20	13.20	.	.	.
	REID	KATHLEEN	.50	6.80	13.60	.	.	.
	SCHARMER	ROBERT	.49	9.00	18.34	.	.	.
	SCHULTZ	JOHN	1.00	14.60	12.93	.	.	.
	SWEENEY	CAROL	.25	3.60	14.40	.	.	.
	XIE	YUYING	1.00	19.80	19.80	.	.	.
	Subtotal dept		5.74	97.40		.	.	
EDUC	ALLEN	JASON25	2.25	9.00
	BAKER	HELEN	2.25	18.00	8.00	1.50	4.00	2.67
	BURKE	DAWNE	.50	6.33	13.00	.25	2.75	11.00
	COLE	TAUNA	1.00	13.20	13.20	.25	.50	2.00
	HANNAH	CORNEILA	.67	7.20	11.20	.	.	.
	HARGROVE	DORI	.75	10.27	13.69	.	.	.
	JARMAN	LOIS	.25	.20	.80	.	.	.
	JENKINS	NANCY	.25	.40	1.60	.	.	.
	JOHNSON	LEANN	.67	7.87	13.26	.50	2.00	4.00
	KENNARD	DOUGLAS	.58	7.33	12.00	.25	1.25	5.00

Fall 2014: SU FTEs by Department

Dept	L_name	F_name	Faculty UG FTE	Student UG FTE	UG S/F Ratio	Faculty G FTE	Student G FTE	G S/F Ratio
	KIRBY	LINDA25	1.75	7.00
	LASHLEY	PAULETTE	.42	1.93	4.64	.	.	.
	LOVELL	SUSAN	.25	2.20	8.80	.	.	.
	MERCADO	REBECCA	.75	10.13	13.51	.25	.50	2.00
	MITCHELL	BELINDA	.50	7.60	15.20	.25	.75	3.00
	MODLER	DAVID	.25	.60	2.40	.	.	.
	MORREALE	DIEDRE	.50	5.40	10.80	.	.	.
	PAULEY	JASON25	.75	3.00
	PRICE	ANDREA	.50	7.40	14.80	.	.	.
	SHETLER	SANDRA	.50	4.20	8.40	.	.	.
	SPENCER	KARIN	1.27	7.47	5.89	.	.	.
	TOOLE	GEORGIANN	.	.	.	1.00	5.50	5.50
	TUTTLE	JAMES	.75	5.60	7.47	.	.	.
Subtotal dept			12.60	123.33		5.00	22.00	
ENGL	BARRETT	JOYCE	.75	9.80	11.40	.	.	.
	BERENSCHOT	DENIS	1.00	13.80	13.20	.	.	.
	CANTRELL	MARK	.25	2.60	10.40	.	.	.
	DOHERTY	KRISTIN	.75	11.60	15.47	.	.	.
	ELLZEY	MARY	.25	4.00	16.00	.	.	.
	FELDBERG	SARAH	.75	11.40	15.20	.	.	.
	GIBSON	ALAN	.50	6.00	12.00	.	.	.
	GODELL	CHRISTOPHER	.75	7.80	10.40	.	.	.
	HANRAHAN	HEIDI	1.00	13.00	13.00	.	.	.
	HEALEY	ELIZABETH	.75	11.60	15.47	.	.	.
	JARMAN	LOIS	.75	11.00	14.67	.	.	.
	KRANTZ	RACHEL	1.00	13.20	12.00	.	.	.
	LAWRENSON	WILLIAM	.75	9.00	12.00	.	.	.
	LEWIN	JAMES	1.00	15.00	15.00	.	.	.
	MESSENGER	CARRIE	1.00	16.60	15.07	.	.	.
	NIXON	TIMOTHY	.75	13.20	17.60	.	.	.
	PATE	JAMES	.73	10.60	14.00	.	.	.
	PRILLAMAN	GRANT	.25	3.40	13.60	.	.	.
	REDDEN	HEIKE	.25	2.20	8.80	.	.	.
	SALFIA	JESSICA	.25	3.20	12.80	.	.	.

Fall 2014: SU FTEs by Department

Dept	L_name	F_name	Faculty UG FTE	Student UG FTE	UG S/F Ratio	Faculty G FTE	Student G FTE	G S/F Ratio
	SANTANA	BRIAN	1.25	20.40	16.32	.	.	.
	SHUGRUE	CHRISTOPHER	.25	2.00	8.00	.	.	.
	SHURBUTT	SYLVIA	.75	4.80	6.40	.	.	.
	SUAREZ BUDENBEN	EVA-MARIA	1.00	9.80	8.93	.	.	.
	TUTTLE	JAMES	.08	.07	.80	.	.	.
	UNGER	BILLIE	.25	4.00	16.00	.	.	.
	WENGER	CHRISTY	.50	6.80	13.60	.	.	.
	WILLIAMS	HANNAH	.75	10.80	14.40	.	.	.
	WILSON	CHRISTOPHER	1.00	15.20	15.20	.	.	.
Subtotal dept			19.32	262.87		.	.	
ENPS	GROFF	JEFFREY	1.00	18.60	18.60	.	.	.
	MADISON	MARK	.25	1.60	6.40	.	.	.
	MATHEWS	CLARISSA	.83	12.27	14.67	.	.	.
	MURPHY	SYTIL	.92	16.47	17.60	.	.	.
	SHAFFER	STEVEN	.67	12.80	19.20	.	.	.
	SNYDER	EDWARD	1.00	17.33	18.00	.	.	.
	VILA	PETER	1.08	18.60	17.17	.	.	.
	WITT	JOSEPH	.25	4.00	16.00	.	.	.
	ZARLENGO	THERESE	.33	5.60	16.80	.	.	.
Subtotal dept			6.33	107.27		.	.	
HIST	ALEXANDER	KEITH	.58	9.80	14.80	.	.	.
	BANKHURST	BENJAMIN	1.25	28.80	19.80	.	.	.
	BOOTH	ADAM	.25	3.60	14.40	.	.	.
	BRASHER	SALLY	.75	13.20	19.20	.	.	.
	BROOMALL	JAMES	.50	10.20	20.40	.	.	.
	CAMPION	COREY	.75	17.80	23.73	.	.	.
	DELGALLO	DINO	.50	11.20	22.40	.	.	.
	EDWARDS	PAMELA	.74	17.00	22.94	.	.	.
	ELLZEY	MARY	.25	1.36	5.44	.	.	.
	GORDON	DAVID	.75	11.60	14.80	.	.	.
	HENRIKSSON	ANDERS	.25	1.32	5.28	.	.	.
	MARJENHOFF	WILLIAM	.75	18.80	25.07	.	.	.
	MORELAND	ANNE	.50	10.60	21.20	.	.	.
	PATE	JAMES	.25	6.00	24.00	.	.	.

Fall 2014: SU FTEs by Department

Dept	L_name	F_name	Faculty UG FTE	Student UG FTE	UG S/F Ratio	Faculty G FTE	Student G FTE	G S/F Ratio
	PAULEY	DOREEN	.25	6.00	24.00	.	.	.
	POLLARD	ROBERT	.25	6.80	27.20	.	.	.
	SANDY	JULIA	.50	3.60	7.20	.	.	.
	SLOCUM-SCHAFFER	STEPHANIE	.25	1.32	5.28	.	.	.
	SPLAINE	JOHN	.49	10.80	22.04	.	.	.
	WILSON	CHRISTOPHER	.25	5.80	23.20	.	.	.
	WYATT	JAMES	.25	3.80	15.20	.	.	.
Subtotal dept			10.31	199.40		.	.	
HPER	ALZONA	ESPERANZA	.08	.93	11.20	.	.	.
	ANDROZZI	JARED	1.00	14.00	11.47	.	.	.
	BARNETT	ANDRO	2.33	29.87	16.17	.	.	.
	BOSLEY	CASSIE	.67	9.80	16.56	.	.	.
	CATER	MONTE	.25	2.00	8.00	.	.	.
	CLUESMAN	JAMIE	.50	14.00	28.00	.	.	.
	DECKER	SUSAN	.75	10.80	14.40	.	.	.
	DOWNIE	LISA	.50	9.60	19.20	.	.	.
	EASTON	DANIELLE	.25	6.80	27.20	.	.	.
	ECKLEBERRY	JENNA	.25	2.53	10.13	.	.	.
	EICHELBERGER	DARRELL	.50	6.40	12.80	.	.	.
	FINCHAM	DAVID	.25	4.60	18.40	.	.	.
	GORDON	JOEL	.25	7.27	29.07	.	.	.
	GRAHAM	JESSICA	.33	4.93	16.80	.	.	.
	HALL	MELISSA	1.00	16.60	16.60	.	.	.
	HESS	JENNIFER	.50	7.60	15.20	.	.	.
	HOEKSTRA	ALEXANDER	.25	4.60	18.40	.	.	.
	HOVATTER	RHONDA	1.00	18.60	18.60	.	.	.
	KENDIG	STACEY	1.50	17.80	11.87	.	.	.
	KLINE	JOSHUA	.33	5.80	17.74	.	.	.
	LANE	SHATORA	.25	4.40	17.60	.	.	.
	LAWLESS	DESMOND	1.00	18.80	16.27	.	.	.
	LOPEZ	LESLIE	.50	11.60	23.20	.	.	.
	MCCOOK	ERNEST	.25	4.60	18.40	.	.	.
	MCNEILL	CHRISTOPHER	.75	14.80	19.73	.	.	.
	MILLER	MATTHEW	.25	3.20	12.80	.	.	.

Fall 2014: SU FTEs by Department

Dept	L_name	F_name	Faculty UG FTE	Student UG FTE	UG S/F Ratio	Faculty G FTE	Student G FTE	G S/F Ratio
	NAMOLIK	JUSTIN	.25	2.40	9.60	.	.	.
	NAU	KONRAD	.17	.67	4.00	.	.	.
	OVERFELT	JEREMY	.25	3.67	14.67	.	.	.
	PLACE	GREGORY	1.00	20.80	20.80	.	.	.
	SEELEY	JENNIFER	.25	3.60	14.40	.	.	.
	SERIAN	JOHN	.50	3.80	7.60	.	.	.
	SILVER	JOEL	.25	4.40	17.60	.	.	.
	SNYDER	GAIL	1.00	1.40	1.20	.	.	.
	THAYIL	JONATHAN	.25	4.00	16.00	.	.	.
	TRACY	JULIA	.92	12.07	12.64	.	.	.
	WILHELM	MARY JO KELL	.50	6.60	13.20	.	.	.
	WILLAUER	TRACY	.75	12.60	16.80	.	.	.
	WOLF	KARL	.25	3.00	12.00	.	.	.
	WORRELL	KEITH	.42	9.33	22.20	.	.	.
Subtotal dept			22.24	340.27		.	.	
LBSC	NEAL	LAURA	.17	1.33	8.00	.	.	.
Subtotal dept			.17	1.33		.	.	
MUSC	ADAMS	KURTIS	1.17	12.47	8.55	.	.	.
	AUSTIN-STONE	HEATHER	.67	7.00	6.69	.	.	.
	CAMBREL	BRIAN	.75	7.47	7.97	.	.	.
	CAMERON	WAYNE	.25	1.40	4.40	.	.	.
	CARTER	DANIEL	.17	.40	2.40	.	.	.
	CONTE	NATALIE	.25	.67	2.60	.	.	.
	COOK	MARK	1.08	10.27	8.99	.	.	.
	DROSINOS	DAVID	.25	1.53	5.20	.	.	.
	FEASLEY	WILLIAM	.58	3.13	4.31	.	.	.
	GONZOL	DAVID	.50	5.20	10.40	.50	1.00	2.00
	HIPPENSTEEL	SCOTT	.96	10.23	10.83	.	.	.
	JONES	ERIK	.92	7.93	9.11	.	.	.
	KING	MARK	.08	.07	.80	.	.	.
	KOCH	JEREMY	.33	.73	2.20	.	.	.
	KUHN	LOIS	.25	2.80	11.20	.	.	.
	LEAF	EDWARD	.08	.13	1.60	.	.	.
	LIAO	YU-HSUAN	.90	5.60	4.19	.	.	.

Fall 2014: SU FTEs by Department

Dept	L_name	F_name	Faculty UG FTE	Student UG FTE	UG S/F Ratio	Faculty G FTE	Student G FTE	G S/F Ratio
	MOORE	BROOKE	.25	.73	3.00	.	.	.
	MULLENAX	GARY	.33	1.73	3.73	.	.	.
	MUNRO	ANNE	.33	.93	2.80	.	.	.
	PACE	KEVIN	.49	1.03	1.95	.	.	.
	PEREZ-MEJIA	CAMILO	.13	.13	1.20	.	.	.
	PETZOLD-CARPENT	SUSAN	.42	5.60	13.44	.	.	.
	PIROG	ANTHONY	.40	.83	2.12	.	.	.
	POLONCHAK	RICHARD	.42	1.60	3.84	.	.	.
	READER	CHARLES	.33	1.13	3.40	.	.	.
	REGAN	JOSEPH	.33	2.03	4.96	.	.	.
	REGAN	MELANIE	.42	1.73	3.87	.	.	.
	ROBINSON	ROBERT	.48	4.93	8.30	.	.	.
	ROMINE	EMILY	.08	.27	3.20	.	.	.
	SHAW	RONNIE	.16	.50	3.20	.	.	.
	SHIPES	MATTHEW	.40	.77	1.92	.	.	.
	SHOOK	GREGORY	.31	4.50	9.60	.	.	.
	TUDOR	ROBERT	.58	6.87	18.68	.	.	.
Subtotal dept			15.04	112.37		.50	1.00	
NURS	ANDERSON	CHARLOTTE	.33	2.67	8.00	.	.	.
	BURKEY	DORIS	.25	11.00	44.00	.33	4.67	14.00
	CLAYTON	LAURA25	3.00	12.00
	COYLE	MARY	.92	22.00	24.00	.	.	.
	DILLEY	KATHY	.67	2.93	4.40	.25	.75	3.00
	DUFFEY	TAMMY	.33	2.67	8.00	.	.	.
	GROVES	MICHAEL	.50	9.80	19.60	.25	3.00	12.00
	HANCOCK	MARY	1.00	30.20	30.20	.	.	.
	KEMERER	BARBARA	.67	20.67	31.00	.	.	.
	KIRSCH	AMY	.33	2.13	6.40	.	.	.
	MAILEY	SHARON	.17	1.87	11.20	.	.	.
	MOTT	BARBARA	.58	23.00	39.43	.	.	.
	SCHAEFFER	AMY	1.00	33.20	33.20	.	.	.
	SPENCER	BARBARA	.58	16.53	28.34	.	.	.
Subtotal dept			7.33	178.67		1.08	11.42	

Fall 2014: SU FTEs by Department

Dept	L_name	F_name	Faculty UG FTE	Student UG FTE	UG S/F Ratio	Faculty G FTE	Student G FTE	G S/F Ratio
PSCI	GUIRGUIS	MAGED	1.00	18.00	18.00	.	.	.
	HOLTSLAG	AREND	1.00	16.20	16.20	.	.	.
	ROBBINS	JOSEPH	1.00	16.20	16.20	.	.	.
	SLOCUM-SCHAFFER	STEPHANIE	.75	14.20	18.93	.	.	.
	STUMP	JACOB	1.00	13.80	13.80	.	.	.
Subtotal dept			4.75	78.40		.	.	
PSYC	ADAMS	JOHN25	2.75	11.00
	BYERS	BARBARA	.75	13.80	18.80	.	.	.
	DAILY	LARRY	1.27	12.87	10.03	.	.	.
	DOBISH	HEIDI	.42	4.13	8.40	.	.	.
	GRANDE	STEVEN25	3.50	14.00
	LEVITAN	LINDSEY	1.52	21.13	16.69	.	.	.
	LOVELACE	CHRISTOPHER	1.00	11.40	11.40	.	.	.
	MAGNETTI	BRIDGET	.25	5.60	22.40	.	.	.
	MERZ	JOSEPH	1.00	16.80	16.80	.	.	.
	MURTAGH	ANNE	1.17	15.07	13.00	.	.	.
	O'BRIEN	WILLIAM	.25	2.80	11.20	.	.	.
	ROWE	KIMBERLY	.50	9.40	18.80	.	.	.
	SEGAR	THOMAS25	2.50	10.00
	SEIDMAN	RUTH	.75	16.20	20.80	.	.	.
	SPENCER	SHANAN	.25	5.00	20.00	.	.	.
	STEVENS	RICHARD75	7.25	9.67
	TOKACH	DEBRA	.75	16.20	22.20	.	.	.
Subtotal dept			9.87	150.40		1.50	16.00	
SOGE	ALEXANDER	KEITH	.25	3.20	12.80	.	.	.
	ANTHONY	ROBERT	1.00	20.60	20.13	.	.	.
	BERGMAN	ROLAND	1.00	16.20	13.20	.	.	.
	DARBOE	MOMODOU	1.00	14.20	14.20	.	.	.
	DEWITT	AMY	.75	13.00	17.33	.	.	.
	HIXSON	DAVID	.25	5.20	20.80	.	.	.
	HOFE	C	.50	6.40	12.80	.	.	.
	HOWARD-BOSTIC	CHIQUITA	1.00	18.40	18.40	.	.	.
	HULSE	CHARLES	1.00	19.20	16.80	.	.	.
	LEROI	MARTHA	.50	12.20	24.40	.	.	.

Fall 2014: SU FTEs by Department

Dept	L_name	F_name	Faculty UG FTE	Student UG FTE	UG S/F Ratio	Faculty G FTE	Student G FTE	G S/F Ratio
	MARINO	EUGENE	.25	1.20	4.80	.	.	.
	PATERSON	STEVEN	.50	10.80	21.60	.	.	.
	PHILLIPS	FRANCINE	.25	3.20	12.80	.	.	.
	SNYDER	RICHARD	.50	11.00	22.00	.	.	.
	SPEAKER	HOMER	.25	3.20	12.80	.	.	.
Subtotal dept			9.00	158.00		.	.	
SOWK	CLINE	CRAIG	.25	4.00	16.00	.	.	.
	CRAWLEY-WOODS	GERALDINE	1.17	14.13	14.69	.	.	.
	GREEN	KAREN	1.00	10.87	9.20	.	.	.
	HORNER	DOUGLAS	.50	6.80	13.60	.	.	.
	TRIETSCH	NICHOLAS	.25	3.20	12.80	.	.	.
Subtotal dept			3.17	39.00		.	.	
STRE	LEADINGHAM	JEANETTE	.33	3.33	10.00	.	.	.
	NUREDINOSKI	YILDIZ	1.00	10.27	10.27	.	.	.
	WILLIAMS	TINA	.33	3.87	11.60	.	.	.
Subtotal dept			1.67	17.47		.	.	
STRM	BANOR	MAXWELL	.83	13.47	16.16	.	.	.
	HUFFER	ANNE	.33	6.00	18.00	.	.	.
	HUGHES	VICTOR	.50	9.33	18.67	.	.	.
	KELLY	ROBERT	.17	2.53	15.20	.	.	.
	MASON	JAMES	.33	6.27	18.80	.	.	.
	NAUGLE	ROBERT	.33	4.93	14.80	.	.	.
	NELLES	FRANCOISE	.33	6.53	19.60	.	.	.
Subtotal dept			2.83	49.07		.	.	
Grand Total			201.73	3041.70		13.83	93.42	