

# Shepherd University Academic Affairs Data 2014-2018

## A. Students by Residency

- Table 1. Paid student FTE by Residency, student FTE by residency, headcount by residency
- Paid student FTE by residency, Fall 2014 – Fall 2018*
  - Student FTE by residency, Fall 2014 – Fall 2018*
  - Student headcount by residency, Fall 2014 – Fall 2018*

## B. Undergraduate Students and Faculty

- Table 2. Faculty FTE
- Table 3. Baccalaureate Majors per Department and Majors per Full-Time Faculty
- Majors per Department, Fall 2018*
  - Mean Number of Majors by Department, Fall 2014 - Fall 2018*
  - Change in Ratio of Majors to FT Faculty, Fall 2014 - Fall 2018*
  - Mean Ratios of Majors to FT Faculty, Fall 2014 - Fall 2018*
- Table 4. RBA Majors
- Table 5. Minors by Department
- Minors by Department, Fall 2018*
  - Mean Number of Minors by Department, Fall 2014 - Fall 2018*
- Table 6. Teacher Education Concentrations
- Students in Teacher Education Concentrations, Fall 2018*
  - Mean Numbers of Students in Teacher Education Concentrations, Fall 2014 – Fall 2018*
- Table 7. Baccalaureate Majors per Department and Teacher Education Students by Department of Concentration Advisement
- Total Majors and Teacher Education Students, Fall 2018*
  - Mean Totals of Majors and Teacher Education Students, Fall 2014 – Fall 2018*
- Table 8. FTE Student to FTE Faculty Ratios
- Change in Ratios(FTE Students: FTE Faculty), 2014-2018*
  - Mean Ratios (FTE Students: FTE Faculty), 2014-2018*
- Table 9. Student FTE Generated by Full-Time Faculty to Full-Time Faculty FTE Ratios
- Change in FTE Ratios(FTE Students: FTE Faculty) 2014-2018*
  - Mean FTE Ratios(FTE Students: FTE Faculty) 2014-2018*
- Table 10. Student FTE Generated by Part-Time Faculty to Part-Time Faculty FTE Ratios
- Change in FTE Ratios(FTE Students: FTE Faculty) 2014-2018*
  - Mean FTE Ratios(FTE Students: FTE Faculty) 2014-2018*
- Table 11. Student-to-Faculty FTE Ratios in Lower Level Courses
- Change in Student FTE to Faculty FTE Ratios in Lower Level Courses, 2014-2018*
  - Mean Student FTE to Faculty FTE Ratios in Lower Level Courses, 2014-2018*
- Table 12. Student-to-Faculty FTE Ratios in Upper Level Courses
- Change in Student FTE to Faculty FTE Ratios in Upper Level Courses, 2014-2018*

- b. Mean Student FTE to Faculty FTE Ratios in Upper Level Courses, 2014-2018*
- Table 13. Graduates from Baccalaureate Programs
  - a. Average Number of Baccalaureate Degrees by Major, 2013-2014 to 2017-2018*
  - b. Baccalaureate Graduates in 2017-2018*
- Table 14. SCH per FTE faculty, for non-General Studies / Core Curriculum courses
  - a. Overall rank, Fall 2018, non-GS/CC courses*
  - b. Overall rank, Fall 2014-2018, non-GS/CC courses*
- Table 15. SCH per FTE faculty, for General Studies / Core Curriculum courses
  - a. Overall rank, Fall 2018, GS/CC courses*
  - b. Overall rank, Fall 2014-2018, GS/CC courses*
- Table 16. Core Curriculum courses by time of day
  - a. Core Curriculum courses by time of day, Monday-Thursday*
  - b. Core Curriculum courses by time of day, Friday, weekdays and Saturday*
- Table 17. Core Curriculum courses offered in standard timeslots, weekdays
  - a. CC courses offered in standard timeslots, weekdays*
- Table 18. Online and hybrid courses, Fall 2014 – Fall 2018
  - a. Hybrid and online courses, Fall 2014 – Fall 2018*
  - b. Percentages of hybrid and online courses, Fall 2014 – Fall 2018*

### **C. Graduate Students and Faculty**

- Table 19. Students Enrolled in Graduate Programs
- Table 20. Graduates from Graduate Programs
- Table 21. Graduate Student to Faculty FTE Ratios
  - a. Mean Change in FTE Ratios (Student FTE: Faculty FTE) for Graduate Courses, 2014-2018*
  - b. Mean FTE Ratios (Student FTE: Faculty FTE) for Graduate Courses, 2014-2018*

### **D. Shepherd University Student Demographic Data**

- Table 22. Degree Targets
- Table 23. Mean ACT and ACT Equivalent Scores by Residency
- Table 24. Status by Residency, Five-Year Trends
- Table 25. ACT and ACT Equivalent Scores by Residency
- Table 26. Class Level by Residency
- Table 27. Retention of Fall 2017 Freshman Cohort by Residency
- Table 28. Graduation of Fall 2012 Freshman Cohort by Residency
- Table 29. Student Headcount by Registration Type
- Table 30. Student FTE by Registration Type
- Table 31. Student Headcount by Race and Ethnicity

### **E. Shepherd University Global Information**

- Table 32. Shepherd University FTE by Department and Instructor

This Acrobat file has been bookmarked for your convenience. To see bookmarks, click on the “Bookmarks” tab on the left side of the Acrobat window.

**Table 1a. Paid student FTE by residency**

Residency	SU					2014-2018
	Fall 2014	Fall 2015	Fall 2016	Fall 2017	Fall 2018	% Change
Total	3463.82	3282.15	3092.02	3010.05	2934.48	-15.3%
In-state	2130.63	2032.13	1954.38	1943.77	1887.40	-11.4%
Out-of-state	1333.18	1250.02	1137.63	1066.28	1047.08	-21.5%

**Table 1b. Student FTE by residency**

Residency	SU					2014-2018
	Fall 2014	Fall 2015	Fall 2016	Fall 2017	Fall 2018	% Change
Total	3457.76	3282.09	3094.38	3002.35	2932.61	-15.2%
In-state	2127.23	2028.27	1946.90	1930.28	1877.68	-11.7%
Out-of-state	1330.53	1253.82	1147.48	1072.07	1054.93	-20.7%

**Table 1c. Student headcount by residency**

Residency	SU					2014-2018
	Fall 2014	Fall 2015	Fall 2016	Fall 2017	Fall 2018	% Change
Total	4119	3913	3826	3789	3723	-9.6%
In-state	2511	2361	2333	2321	2231	-11.2%
Out-of-state	1608	1552	1493	1468	1492	-7.2%

**General Explanation/Definitions.**

1. One student *FTE* (full-time equivalent) equals 15 credit hours for baccalaureate students and 12 credit hours for graduate students.
2. The % **change** is the difference between the most recent data and the first column of data, divided by the first column of data.
3. Numbers are for undergraduate and graduate students combined.

**Table 2. Faculty FTE**

Department						2014-2018	
	Fall 2014	Fall 2015	Fall 2016	Fall 2017	Fall 2018	Mean	% Change
CAT	13.75	12.20	12.47	13.20	12.51	12.83	-9.0%
MCOM	7.25	7.50	7.00	6.74	7.23	7.14	-0.3%
ENGL (including stretch)	23.72	20.99	19.11	19.78	20.54	20.83	-13.4%
HIST	9.82	10.31	10.26	7.19	6.54	8.82	-33.4%
MUSC	14.07	15.04	13.22	12.57	11.65	13.31	-17.2%
<i>Arts and Humanities</i>	<i>68.61</i>	<i>66.04</i>	<i>62.06</i>	<i>59.48</i>	<i>58.47</i>	<i>62.93</i>	<i>-14.8%</i>
ACCT	3.50	3.25	3.00	2.75	2.75	3.05	-21.4%
BADM	8.00	7.30	8.12	9.25	9.00	8.33	12.5%
ECON / ECFN	6.50	5.74	6.00	5.75	5.75	5.95	-11.5%
<i>Business</i>	<i>18.00</i>	<i>16.29</i>	<i>17.12</i>	<i>17.75</i>	<i>17.50</i>	<i>17.33</i>	<i>-2.8%</i>
FACS	3.83	3.07	3.33	3.57	3.58	3.48	-6.5%
PSCI / PSGS	5.25	4.75	5.00	4.65	5.06	4.94	-3.6%
PSYC	9.65	9.87	9.25	10.06	8.25	9.42	-14.5%
SOGE	9.50	9.00	10.74	11.00	10.50	10.15	10.5%
SOWK	3.42	3.17	2.67	3.25	3.92	3.29	14.6%
<i>Social &amp; Behavioral Sci.</i>	<i>31.65</i>	<i>29.86</i>	<i>30.99</i>	<i>32.53</i>	<i>31.31</i>	<i>31.27</i>	<i>-1.1%</i>
EDUC	13.33	12.60	12.36	12.94	12.45	12.74	-6.6%
HPER	22.57	22.24	24.58	22.33	22.56	22.86	0.0%
NURS	7.67	7.33	6.92	6.75	6.58	7.05	-14.2%
<i>Education and Prof. St.</i>	<i>43.57</i>	<i>42.17</i>	<i>43.86</i>	<i>42.02</i>	<i>41.59</i>	<i>42.64</i>	<i>-4.5%</i>
BIOL	9.92	11.12	10.33	11.28	12.85	11.10	29.5%
CHEM	6.53	6.42	6.42	6.03	5.89	6.26	-9.8%
CSME (including stretch)	19.74	19.39	17.81	18.22	18.24	18.68	-7.6%
ENVS / ENPS	7.42	6.33	7.58	6.83	7.21	7.07	-2.8%
<i>Natural Sciences &amp; M.</i>	<i>43.61</i>	<i>43.26</i>	<i>42.14</i>	<i>42.36</i>	<i>44.19</i>	<i>43.11</i>	<i>1.3%</i>
<b>Shepherd University</b>	<b>205.44</b>	<b>197.62</b>	<b>196.17</b>	<b>194.14</b>	<b>193.06</b>	<b>197.29</b>	<b>-6.0%</b>

**General Explanation/Definitions.**

1. One faculty FTE (full-time equivalent) equals 12 hours of instructional responsibility.
2. The **mean** is the average for five years.
3. The **% change** is the difference between the most recent and the earliest fall semester FTE's divided by the earliest fall FTE. For example, for Mass Communications in Fall 2018, this would be  $(7.23 - 7.25) / 7.25$ .
4. Numbers include undergraduate instruction only.
5. As of Fall 2018, Stretch English and Stretch Mathematics courses are housed in English and CSME, respectively. For Fall 2017 and earlier, the FTE for these courses have been added to the English and CSME FTE totals.

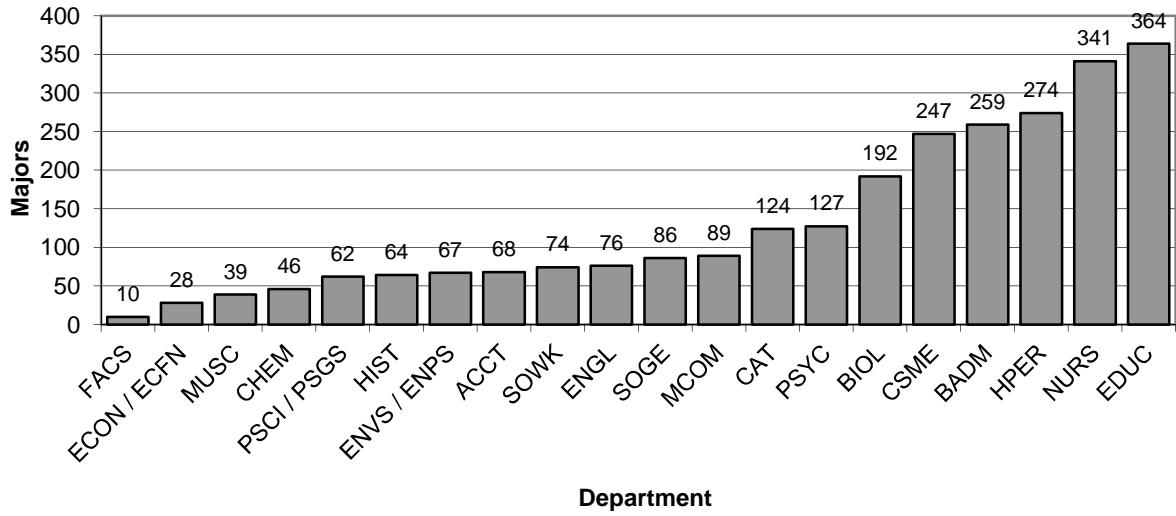
**Table 3. Baccalaureate Majors per Department and Majors per Full-Time Faculty**

Department	Fall 2014			Fall 2015			Fall 2016			Fall 2017			Fall 2018			Fall 2014-2018		
	N	FT Fac	N/FT Fac	N	FT Fac	N/FT Fac	N	FT Fac	N/FT Fac	N	FT Fac	N/FT Fac	N	FT Fac	N/FT Fac	Mean N/FT Fac	Change N/FT Fac	Percentage Change in Majors
CAT	160	10	16.0	144	9	16.0	120	9	13.3	116	11	10.5	124	10.5	11.8	11.3	-4.19	-22.5%
MCOM	115	4	31.3	104	4	26.0	104	4	26.0	105	4	26.3	89	4	22.3	22.0	-9.00	-22.6%
ENGL	93	13.5	6.9	79	13.5	5.9	76	13.5	5.6	56	13.5	4.1	76	15.5	4.9	4.6	-1.99	-18.3%
HIST	104	6	17.3	84	7	12.0	72	7	10.3	56	7	8.0	64	7	9.1	9.5	-8.19	-38.5%
MUSC	39	8	4.9	38	8	4.8	30	8	3.8	35	7.5	4.7	39	8.5	4.6	3.8	-0.29	0.0%
<i>Arts and Humanities</i>	521	41.5	12.6	449	41.5	10.8	402	41.5	9.7	368	43	8.6	392	45.5	8.6	8.4	-3.94	-24.8%
ACCT	84	3	28.0	85	3	28.3	75	3	25.0	65	3	21.7	68	3	22.7	20.9	-5.33	-19.0%
BADM	290	6	39.5	291	5	44.9	243	5	48.6	270	4.5	60.0	259	4.5	57.6	41.8	18.06	-10.7%
ECON / ECFN	32	5	6.4	32	5	6.4	29	5	5.8	29	5	5.8	28	5	5.6	5.0	-0.80	-12.5%
<i>Business</i>	406	14	29.0	408	13	31.4	347	13	26.7	364	12.5	29.1	355	12.5	28.4	24.1	-0.60	-12.6%
FACS	26	2	14.4	23	2	16.2	22	1	22.0	15	1	15.0	10	1	10.0	12.9	-4.40	-61.5%
PSCI / PSGS	72	5	14.4	81	5	16.2	73	5	14.6	60	4	15.0	62	5	12.4	12.1	-2.00	-13.9%
PSYC	162	6	27.0	132	6	22.0	123	6	20.5	133	6	22.2	127	6	21.2	18.8	-5.83	-21.6%
SOGE	146	6.5	22.5	117	6.5	18.0	110	6.5	16.9	90	6.5	13.8	86	5.5	15.6	14.5	-6.83	-41.1%
SOWK	82	3	27.3	86	3	28.7	97	3	32.3	91	3	30.3	74	3	24.7	23.9	-2.67	-9.8%
<i>Social &amp; Behavioral Sci.</i>	488	22.5	21.7	439	22.5	19.5	425	21.5	19.8	389	20.5	19.0	359	20.5	17.5	16.2	-4.18	-26.4%
EDUC	539	14.5	37.2	512	13.5	37.9	433	13.5	32.1	383	11.5	33.3	364	11	33.1	28.9	-4.08	-32.5%
HPER	314	8.5	36.9	314	8.5	36.9	319	8.5	37.5	293	8	36.6	274	8	34.3	30.4	-2.69	-12.7%
NURS	454	9	50.4	433	11	39.4	438	13	33.7	388	13	29.8	341	10.5	32.5	31.0	-17.97	-24.9%
<i>Education &amp; Prof. St.</i>	1307	32	40.8	1259	33	38.2	1190	35	34.0	1064	32.5	32.7	979	29.5	33.2	29.8	-7.66	-25.1%
BIOL	204	9.5	21.5	203	9.5	21.4	190	8.5	22.4	189	9	21.0	192	9	21.3	17.9	-0.14	-5.9%
CHEM	52	5.75	9.0	50	5.75	8.7	43	5.75	7.5	45	5.5	8.2	46	5.5	8.4	7.0	-0.68	-11.5%
CSME	216	11	19.6	244	11	22.2	229	11	20.8	261	12	20.8	247	13	19.0	17.1	-0.64	14.4%
ENVS / ENPS	107	6	17.8	99	6	16.5	87	6	14.5	84	6	14.0	67	7	9.6	12.1	-8.26	-37.4%
<i>Natural Sciences &amp; M.</i>	579	32.25	18.0	596	32.25	18.5	549	31.25	17.6	579	32.5	17.8	552	34.5	16.0	14.6	-1.95	-4.7%
<b>Shepherd University</b>	<b>3301</b>	<b>142.3</b>	<b>23.2</b>	<b>3151</b>	<b>142.3</b>	<b>22.2</b>	<b>2913</b>	<b>142.3</b>	<b>20.5</b>	<b>2764</b>	<b>141</b>	<b>19.6</b>	<b>2637</b>	<b>142.5</b>	<b>18.5</b>	<b>17.3</b>	<b>-4.70</b>	<b>-20.1%</b>

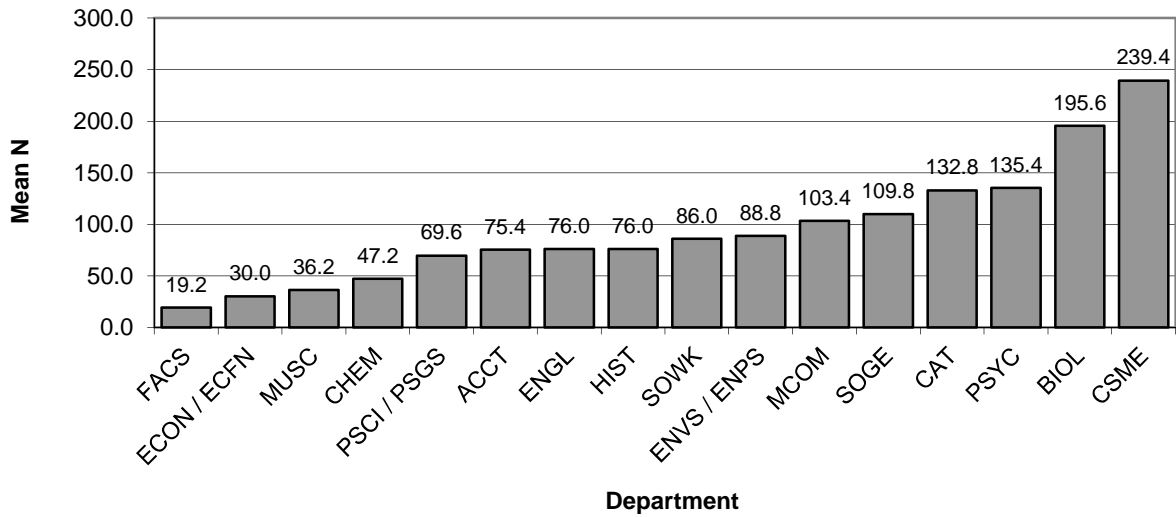
**General Explanation/Definitions.**

1. **N** is the number of undergraduate students in degree programs offered by the department. This includes first and second majors.
2. **FT Fac** is the number of full-time faculty in the department including visiting faculty. This is generally a count of "bodies" from the faculty list produced by the Provost's office. Exceptions are where there is a permanent contractual specification of less than full-time; released time is not counted and neither is leave, unless there is a full-time replacement, because those are unlikely to affect the number of majors. Herendeen, Benedict, Legreid, Mailey, Martz, Renninger, Warburton, and Cantrell are all counted as *half* positions. Master faculty are not included. R. Stevens is not counted here, as he works exclusively with graduate students.
3. The **N/FT Fac** is the ratio of students to faculty.
4. The **mean N/FT Fac** is the average N/FT Fac for the years shown.
5. The **change** is the current year's N/FT Fac minus the first year's N/FT Fac.
6. The **percentage change in majors** is the difference between the current year's number of majors and the first year's number of majors, divided by the first year's number of majors.

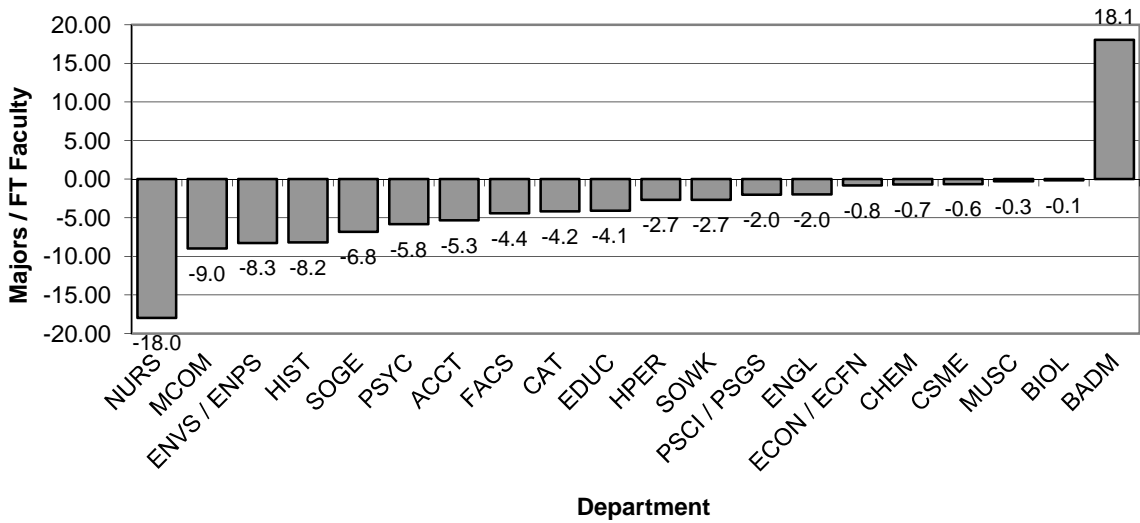
**Graph 3A: Majors per Department, Fall 2018**  
(from Table 3)



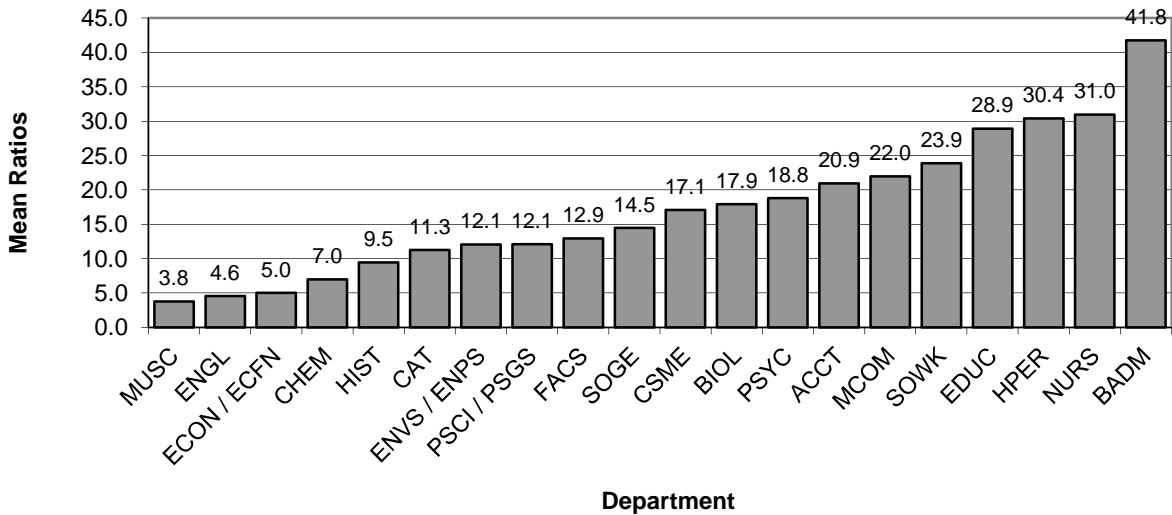
**Graph 3B: Mean Number of Majors by Department, Fall 2014 - Fall 2018**  
(from Table 3)



**Graph 3C: Change in Ratio of Majors to FT Faculty,  
Fall 2014 - Fall 2018**  
(from Table 3)



**Graph 3D: Mean Ratios of Majors to FT Faculty,  
Fall 2014 - Fall 2018**  
(from Table 3)



**Table 4. RBA majors**

<b>RBA</b>	<b>2014</b>	<b>2015</b>	<b>2016</b>	<b>2017</b>	<b>2018</b>
Headcount	272	147	149	135	130
Full-time	163	46	55	58	49
Non-credit	0	1	0	0	3
Part-time	109	100	94	77	78
FTE	196.20	77.87	84.67	83.33	76.23
Average SCH per semester	10.82	7.95	8.52	9.26	8.80
Average age of majors	31.5	39.5	38.4	37.1	37.2
Graduates	111	88	132	96	

Headcount, FTE, average SCH per semester, and average age are calculated for Fall semester of the listed academic year.

Graduates are counted from the fall of the listed year through the summer of the following year. Numbers of graduates are not available for the most recent year listed.



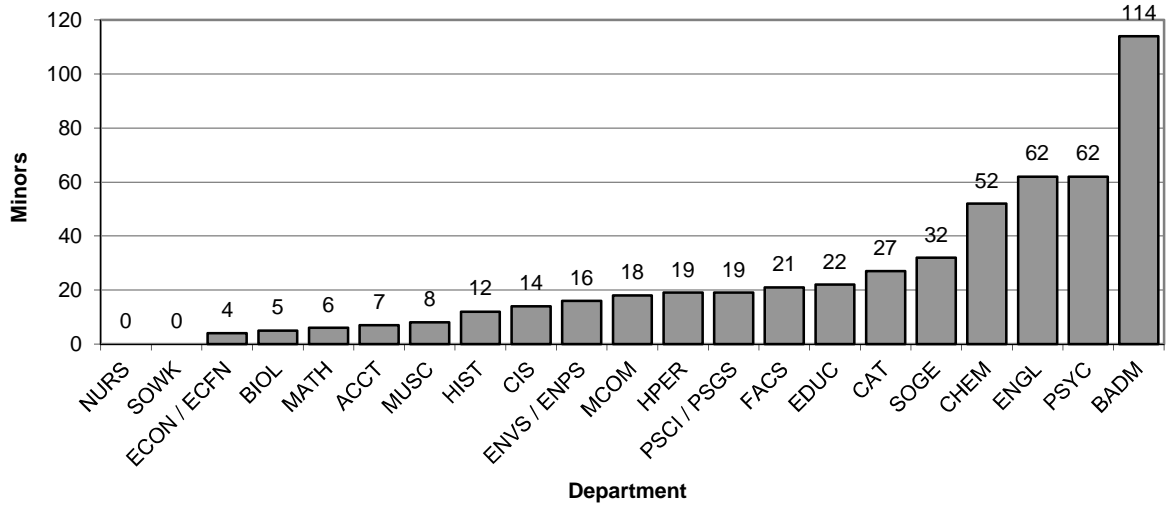
**Table 5. Minors by Department**

Department	Fall 2014		Fall 2015		Fall 2016		Fall 2017		Fall 2018		2014-2018		
	N	N Change	N	N Change	N	N Change	N	N Change	N	N Change	Mean N	Change	Mean Change
CAT	35	-6	40	5	30	-10	29	-1	27	-2	32.2	-8.00	-2.80
MCOM	22	3	23	1	21	-2	13	-8	18	5	19.4	-4.0	-0.20
ENGL	64	2	47	-17	53	6	52	-1	62	10	55.6	-2.0	0.00
HIST	26	8	24	-2	15	-9	11	-4	12	1	17.6	-14.0	-1.20
MUSC	16	6	10	-6	6	-4	11	5	8	-3	10.2	-8.0	-0.40
<i>Arts and Humanities</i>	<b>163</b>	<b>13</b>	<b>144</b>	<b>-19</b>	<b>125</b>	<b>-19</b>	<b>116</b>	<b>-9</b>	<b>127</b>	<b>11</b>	<b>135.0</b>	<b>-36.0</b>	<b>-4.60</b>
ACCT	17	11	6	-11	6	0	5	-1	7	2	8.2	-10.0	0.20
BADM	98	12	102	4	88	-14	102	14	114	12	100.8	16.0	5.60
ECON / ECFN	10	-9	5	-5	6	1	7	1	4	-3	6.4	-6.0	-3.00
<i>Business</i>	<b>125</b>	<b>14</b>	<b>113</b>	<b>-12</b>	<b>100</b>	<b>-13</b>	<b>114</b>	<b>14</b>	<b>125</b>	<b>11</b>	<b>115.4</b>	<b>0.0</b>	<b>2.80</b>
FACS	22	1	26	4	28	2	23	-5	21	-2	24.0	-1.0	0.00
PSCI / PSGS	21	-5	20	-1	18	-2	19	1	19	0	19.4	-2.0	-1.40
PSYC	72	18	89	17	87	-2	75	-12	62	-13	77.0	-10.0	1.60
SOGE	44	3	49	5	41	-8	32	-9	32	0	39.6	-12.0	-1.80
SOWK	0	0	0	0	0	0	0	0	0	0	0.0	0.0	0.00
<i>Social &amp; Behavioral Sci.</i>	<b>159</b>	<b>17</b>	<b>184</b>	<b>25</b>	<b>174</b>	<b>-10</b>	<b>149</b>	<b>-25</b>	<b>134</b>	<b>-15</b>	<b>160.0</b>	<b>-25.0</b>	<b>-1.60</b>
EDUC	20	-5	23	3	22	-1	23	1	22	-1	22.0	2.0	-0.60
HPER	24	-3	20	-4	28	8	15	-13	19	4	21.2	-5.0	-1.60
NURS	0	0	0	0	0	0	0	0	0	0	0.0	0.0	0.00
<i>Education and Prof. St.</i>	<b>44</b>	<b>-8</b>	<b>43</b>	<b>-1</b>	<b>50</b>	<b>7</b>	<b>38</b>	<b>-12</b>	<b>41</b>	<b>3</b>	<b>43.2</b>	<b>-3.0</b>	<b>-2.20</b>
BIOL	10	-5	12	2	7	-5	3	-4	5	2	7.4	-5.0	-2.00
CHEM	46	-22	50	4	63	13	38	-25	52	14	49.8	6.0	-3.20
CIS	5	-10	13	8	6	-7	12	6	14	2	10.0	9.0	-0.20
MATH	9	-3	7	-2	6	-1	6	0	6	0	6.8	-3.0	-1.20
ENVS / ENPS	11	-10	14	3	18	4	20	2	16	-4	15.8	5.0	-1.00
<i>Natural Sciences &amp; M.</i>	<b>81</b>	<b>-50</b>	<b>96</b>	<b>15</b>	<b>100</b>	<b>4</b>	<b>79</b>	<b>-21</b>	<b>93</b>	<b>14</b>	<b>89.8</b>	<b>12.0</b>	<b>-7.60</b>
<b>Shepherd University</b>	<b>572</b>	<b>-14</b>	<b>580</b>	<b>8</b>	<b>549</b>	<b>-31</b>	<b>496</b>	<b>-53</b>	<b>520</b>	<b>24</b>	<b>543.4</b>	<b>-52.0</b>	<b>-13.20</b>

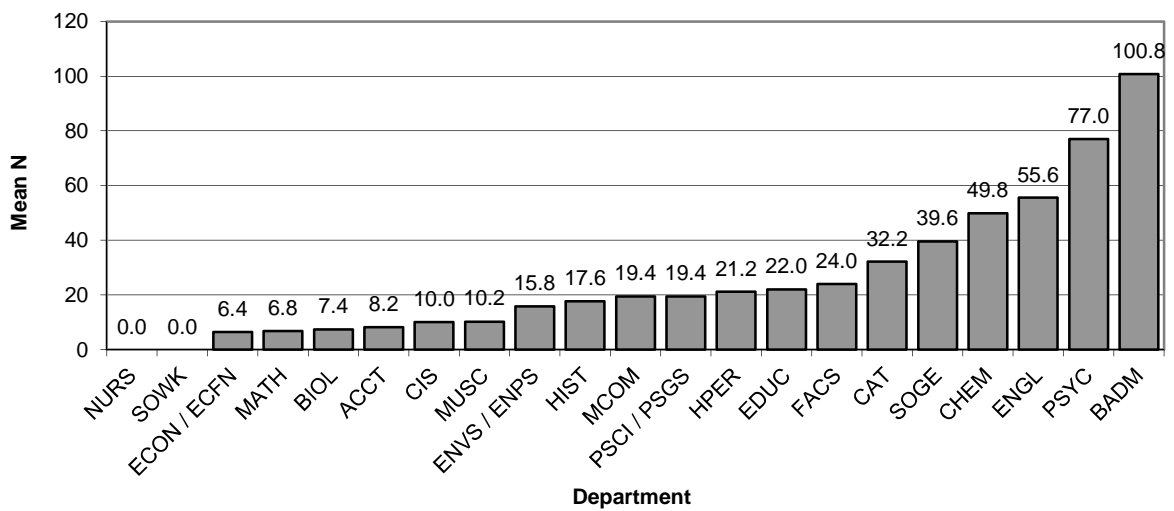
**General Explanation/Definitions.**

1. **N** is the number of students in minor programs offered by the department.
2. The **N change** is the difference in the number of students in consecutive years.
3. The **mean N** is the mean number of students over the years represented (five years).
4. The **mean change** is the sum of the annual changes divided by the number of annual changes.
5. Women's Studies is not attached to any department. (Gender and Women's Studies is attached to ENGL.) There were six WMST minors in Fall 2017.
6. Appalachian Studies is not attached to any department. There were five APPN minors in Fall 2017.

**Graph 5A: Minors by Department, Fall 2018**  
(from Table 5)



**Graph 5B: Mean Number of Minors by Department, Fall 2014 - Fall 2018**  
(from Table 5)



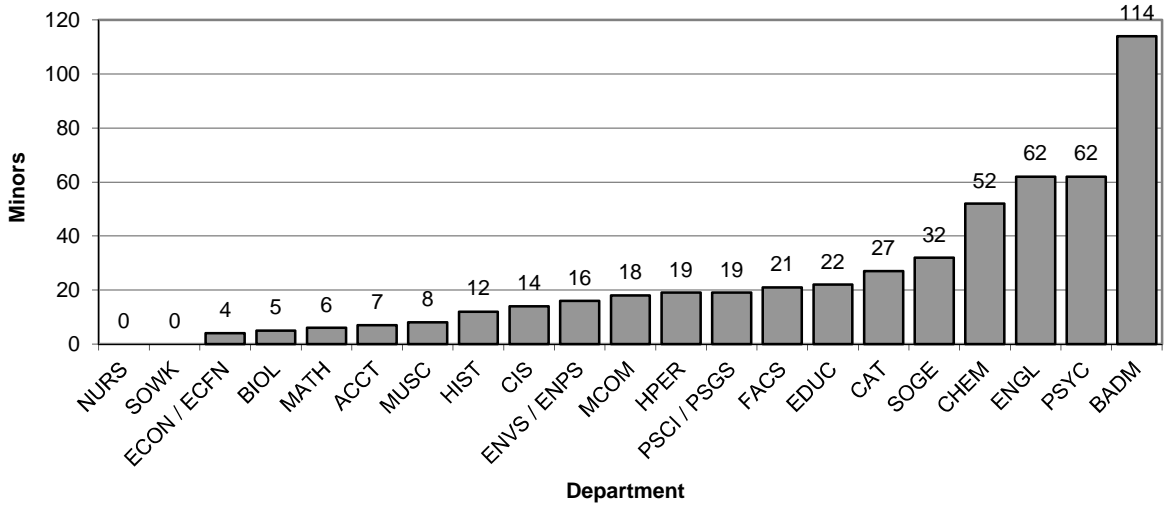
**Table 5. Minors by Department**

Department	Fall 2014		Fall 2015		Fall 2016		Fall 2017		Fall 2018		2014-2018		
	N	N Change	N	N Change	N	N Change	N	N Change	N	N Change	Mean N	Change	Mean Change
CAT	35	-6	40	5	30	-10	29	-1	27	-2	32.2	-8.00	-2.80
MCOM	22	3	23	1	21	-2	13	-8	18	5	19.4	-4.0	-0.20
ENGL	64	2	47	-17	53	6	52	-1	62	10	55.6	-2.0	0.00
HIST	26	8	24	-2	15	-9	11	-4	12	1	17.6	-14.0	-1.20
MUSC	16	6	10	-6	6	-4	11	5	8	-3	10.2	-8.0	-0.40
<i>Arts and Humanities</i>	<b>163</b>	<b>13</b>	<b>144</b>	<b>-19</b>	<b>125</b>	<b>-19</b>	<b>116</b>	<b>-9</b>	<b>127</b>	<b>11</b>	<b>135.0</b>	<b>-36.0</b>	<b>-4.60</b>
ACCT	17	11	6	-11	6	0	5	-1	7	2	8.2	-10.0	0.20
BADM	98	12	102	4	88	-14	102	14	114	12	100.8	16.0	5.60
ECON / ECFN	10	-9	5	-5	6	1	7	1	4	-3	6.4	-6.0	-3.00
<i>Business</i>	<b>125</b>	<b>14</b>	<b>113</b>	<b>-12</b>	<b>100</b>	<b>-13</b>	<b>114</b>	<b>14</b>	<b>125</b>	<b>11</b>	<b>115.4</b>	<b>0.0</b>	<b>2.80</b>
FACS	22	1	26	4	28	2	23	-5	21	-2	24.0	-1.0	0.00
PSCI / PSGS	21	-5	20	-1	18	-2	19	1	19	0	19.4	-2.0	-1.40
PSYC	72	18	89	17	87	-2	75	-12	62	-13	77.0	-10.0	1.60
SOGE	44	3	49	5	41	-8	32	-9	32	0	39.6	-12.0	-1.80
SOWK	0	0	0	0	0	0	0	0	0	0	0.0	0.0	0.00
<i>Social &amp; Behavioral Sci.</i>	<b>159</b>	<b>17</b>	<b>184</b>	<b>25</b>	<b>174</b>	<b>-10</b>	<b>149</b>	<b>-25</b>	<b>134</b>	<b>-15</b>	<b>160.0</b>	<b>-25.0</b>	<b>-1.60</b>
EDUC	20	-5	23	3	22	-1	23	1	22	-1	22.0	2.0	-0.60
HPER	24	-3	20	-4	28	8	15	-13	19	4	21.2	-5.0	-1.60
NURS	0	0	0	0	0	0	0	0	0	0	0.0	0.0	0.00
<i>Education and Prof. St.</i>	<b>44</b>	<b>-8</b>	<b>43</b>	<b>-1</b>	<b>50</b>	<b>7</b>	<b>38</b>	<b>-12</b>	<b>41</b>	<b>3</b>	<b>43.2</b>	<b>-3.0</b>	<b>-2.20</b>
BIOL	10	-5	12	2	7	-5	3	-4	5	2	7.4	-5.0	-2.00
CHEM	46	-22	50	4	63	13	38	-25	52	14	49.8	6.0	-3.20
CIS	5	-10	13	8	6	-7	12	6	14	2	10.0	9.0	-0.20
MATH	9	-3	7	-2	6	-1	6	0	6	0	6.8	-3.0	-1.20
ENVS / ENPS	11	-10	14	3	18	4	20	2	16	-4	15.8	5.0	-1.00
<i>Natural Sciences &amp; M.</i>	<b>81</b>	<b>-50</b>	<b>96</b>	<b>15</b>	<b>100</b>	<b>4</b>	<b>79</b>	<b>-21</b>	<b>93</b>	<b>14</b>	<b>89.8</b>	<b>12.0</b>	<b>-7.60</b>
<b>Shepherd University</b>	<b>572</b>	<b>-14</b>	<b>580</b>	<b>8</b>	<b>549</b>	<b>-31</b>	<b>496</b>	<b>-53</b>	<b>520</b>	<b>24</b>	<b>543.4</b>	<b>-52.0</b>	<b>-13.20</b>

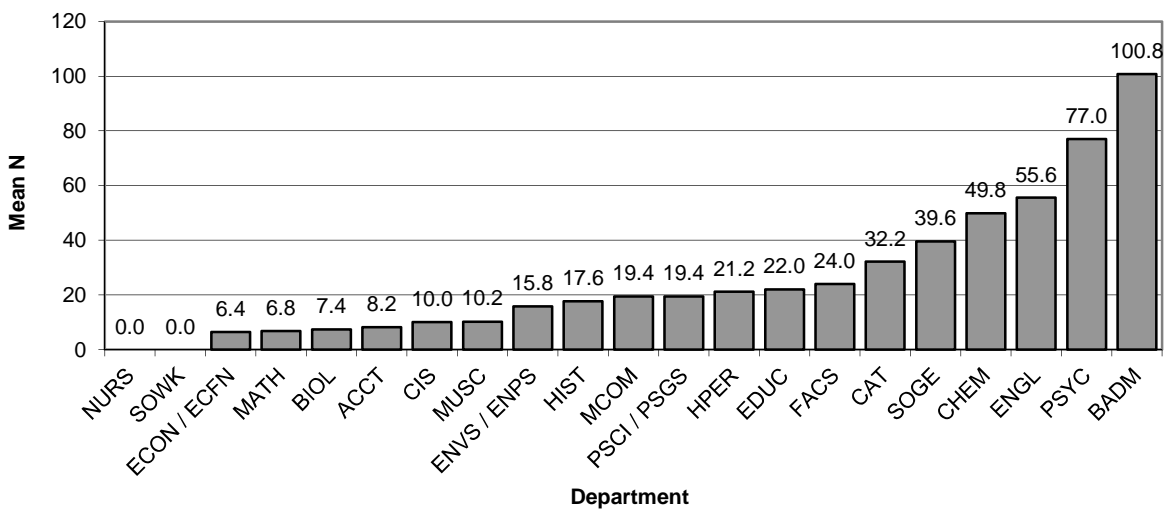
**General Explanation/Definitions.**

1. **N** is the number of students in minor programs offered by the department.
2. The **N change** is the difference in the number of students in consecutive years.
3. The **mean N** is the mean number of students over the years represented (five years).
4. The **mean change** is the sum of the annual changes divided by the number of annual changes.
5. Women's Studies is not attached to any department. (Gender and Women's Studies is attached to ENGL.) There were six WMST minors in Fall 2018.
6. Appalachian Studies is not attached to any department. There were five APPN minors in Fall 2018.

**Graph 5A: Minors by Department, Fall 2018**  
(from Table 5)



**Graph 5B: Mean Number of Minors by Department, Fall 2014 - Fall 2018**  
(from Table 5)



**Table 6. Teacher Education Concentrations**

Department	Teaching Concentration	Fall 2014	Fall 2015	Fall 2016	Fall 2017	Fall 2018	Mean	Change	Advising F18	
									Fac	Majors
CAT	Art	27	22	20	15	14	19.6	-13	10.5	28
Biology	Biology	5	2	2	2	0	2.2	-5	9	0
Business Admin / FACS	FACS	4	7	5	3	0	3.8	-4	1	0
Biology	Chemistry	3	1	1	2	0	1.4	-3	9	0
Education	Elementary	254	225	202	136	129	189.2	-125	11	258
English	English	49	49	27	19	29	34.6	-20	15.5	58
Biology	General Science	6	3	4	6	6	5.0	0	9	12
HPERS	Health, Phys. Ed.	83	68	62	59	53	65.0	-30	8	106
CSME	Mathematics	36	16	14	12	10	17.6	-26	13	20
Music	Music	76	84	70	57	50	67.4	-26	8.5	100
Education	Social Studies	61	59	44	50	55	53.8	-6	11	110
English	Spanish	2	4	4	3	1	2.8	-1	15.5	2
Education	C & I	14	22	18	13	8	15.0	-6	11	16

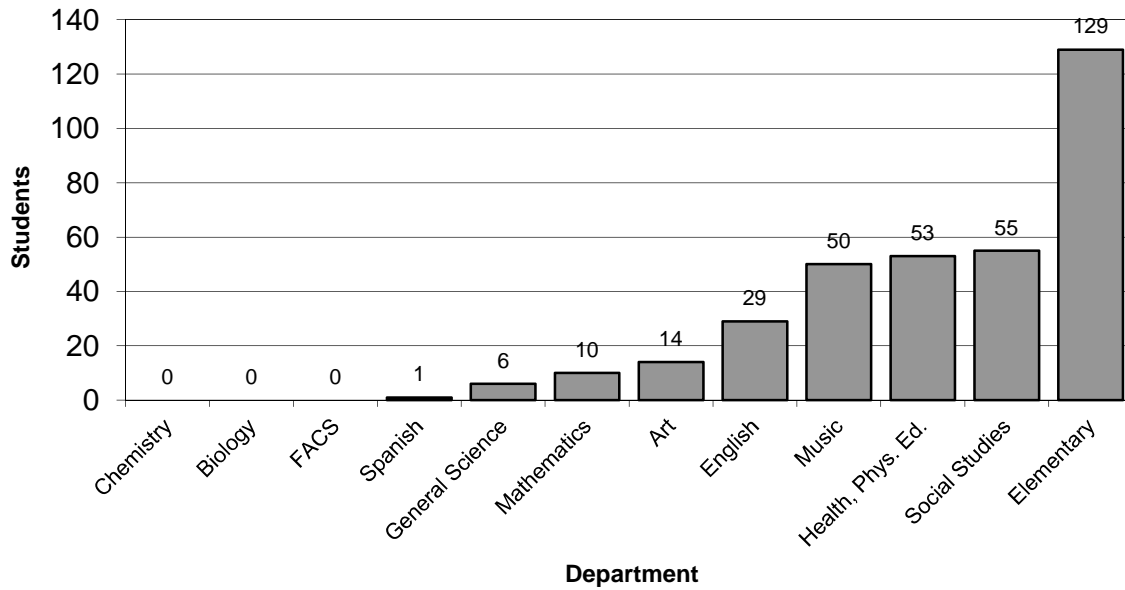
Note that the C & I students are included both in the Education department and in the departments of their concentrations. The secondary education majors are included only in the departments of their concentrations.

The Advising F18 "majors" is the number of students in the Fall 2018 column multiplied by 2, as Joe Simplicio specified starting with the 2003 reports. "Fac" is the number of full-time faculty in the department in which the concentration is housed.

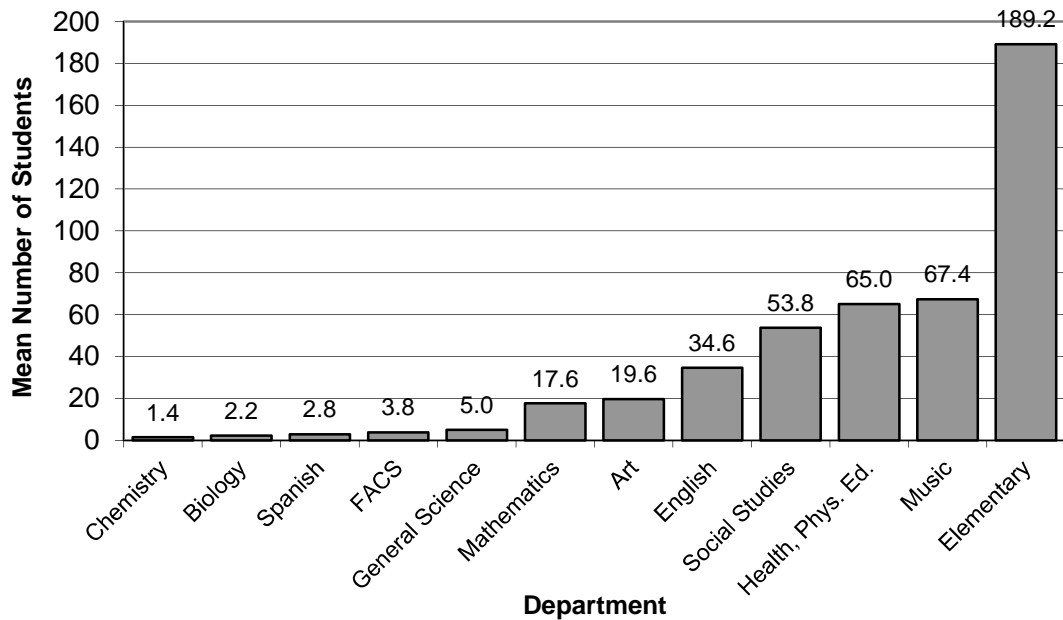
**General Explanation/Definitions.**

1. A **concentration** is a teaching specialty such as English or Biology. The C&I graduate students' concentrations have been added to their departments where applicable. For Fall 2018, of the nine C&I students, four are Individualized, four are in Special Education, and one has no concentration declared.
2. The **department** is the unit responsible for the concentration.
3. The numbers for each semester are the number of declared students in each concentration. Any given student may have more than one concentration.
4. The **mean** is the average of the annual number of students in a given concentration.
5. The **change** is the number of students in the current year minus the number of students in the first year.

**Graph 6A. Students in Teacher Education Concentrations, Fall 2018**  
(from Table 6)



**Graph 6B. Mean Numbers of Students in Teacher Education Concentrations, Fall 2014-Fall 2018**  
(from Table 6)



**Table 7. Baccalaureate Majors per Department and Teacher Education Students by Department of Concentration Advisement**

Department	Fall 2014			Fall 2015			Fall 2016			Fall 2017			Fall 2018			Fall 2014-2018		
	N	Secondary Education and C&I	Total	N	Secondary Education and C&I	Total	N	Secondary Education and C&I	Total	N	Secondary Education and C&I	Total	N	Secondary Education and C&I	Total	Mean N	Mean Secondary Education	Mean Total
CAT	160	27	187	144	22	166	120	20	140	116	15	131	124	14	138	132.8	19.6	152.4
MCOM	125	0	125	104	0	104	104	0	104	105	0	105	89	0	89	105.4	0.0	105.4
ENGL	93	51	144	79	53	132	76	31	107	56	22	78	76	30	106	76.0	37.4	113.4
HIST	104	0	104	84	0	84	72	0	72	56	0	56	64	0	64	76.0	0.0	76.0
MUSC	39	76	115	38	84	122	30	70	100	35	57	92	39	50	89	36.2	67.4	103.6
<i>Arts and Humanities</i>	<b>521</b>	<b>154</b>	<b>675</b>	<b>449</b>	<b>159</b>	<b>608</b>	<b>402</b>	<b>121</b>	<b>523</b>	<b>368</b>	<b>94</b>	<b>462</b>	<b>392</b>	<b>94</b>	<b>486</b>	<b>426.4</b>	<b>124.4</b>	<b>550.8</b>
ACCT	84	0	84	85	0	85	75	0	75	65	0	65	68	0	68	75.4	0.0	75.4
BADM	290	0	294	291	0	298	243	0	270	270	0	273	259	0	259	270.6	3.8	278.8
ECON / ECFN	32	0	32	32	0	32	29	0	29	29	0	29	28	0	28	30.0	0.0	30.0
<i>Business</i>	<b>406</b>	<b>0</b>	<b>406</b>	<b>408</b>	<b>0</b>	<b>408</b>	<b>347</b>	<b>0</b>	<b>347</b>	<b>364</b>	<b>0</b>	<b>364</b>	<b>355</b>	<b>0</b>	<b>355</b>	<b>376.0</b>	<b>0.0</b>	<b>376.0</b>
FACS	26	4	26	23	7	23	22	5	22	15	3	18	10	0	10	19.2	3.8	19.8
PSCI / PSGS	72	0	72	81	0	81	73	0	67	60	0	60	62	0	62	69.6	0.0	68.4
PSYC	162	0	162	132	0	132	123	0	123	133	0	133	127	0	127	135.4	0.0	135.4
SOGE	146	0	146	117	0	117	110	0	110	90	0	90	86	0	86	109.8	0.0	109.8
SOWK	82	0	82	86	0	86	97	0	97	91	0	91	74	0	74	86.0	0.0	86.0
<i>Social &amp; Behavioral Sci.</i>	<b>488</b>	<b>4</b>	<b>492</b>	<b>439</b>	<b>7</b>	<b>446</b>	<b>425</b>	<b>5</b>	<b>419</b>	<b>389</b>	<b>3</b>	<b>392</b>	<b>359</b>	<b>0</b>	<b>359</b>	<b>420.0</b>	<b>3.8</b>	<b>421.6</b>
EDUC	539	64	603	512	61	573	433	44	477	383	50	433	364	55	419	446.2	54.8	501.0
HPER	314	83	397	314	68	382	320	62	382	293	59	352	274	53	327	303.0	65.0	368.0
NURS	454	0	454	433	0	433	438	0	438	388	0	388	341	0	341	410.8	0.0	410.8
<i>Education &amp; Prof. St.</i>	<b>1307</b>	<b>398</b>	<b>1705</b>	<b>1259</b>	<b>352</b>	<b>1611</b>	<b>1191</b>	<b>106</b>	<b>1297</b>	<b>1064</b>	<b>109</b>	<b>1173</b>	<b>979</b>	<b>108</b>	<b>1087</b>	<b>1160.0</b>	<b>214.6</b>	<b>1374.6</b>
BIOL	204	14	218	203	6	209	190	7	197	189	10	199	192	6	198	195.6	8.6	204.2
CHEM	52	0	52	50	0	50	43	0	43	45	0	45	46	0	46	47.2	0.0	47.2
CSME	193	36	229	217	16	233	206	14	206	261	12	273	247	10	257	224.8	17.6	239.6
ENVS / ENPS	107	0	107	99	0	99	87	0	87	84	0	84	67	0	67	88.8	0.0	88.8
<i>Natural Sciences &amp; M.</i>	<b>556</b>	<b>50</b>	<b>606</b>	<b>569</b>	<b>22</b>	<b>591</b>	<b>549</b>	<b>21</b>	<b>570</b>	<b>579</b>	<b>22</b>	<b>601</b>	<b>552</b>	<b>16</b>	<b>568</b>	<b>561.0</b>	<b>26.2</b>	<b>587.2</b>
<b>Shepherd University</b>	<b>3278</b>	<b>606</b>	<b>3884</b>	<b>3124</b>	<b>540</b>	<b>3664</b>	<b>2914</b>	<b>253</b>	<b>3167</b>	<b>2764</b>	<b>228</b>	<b>2992</b>	<b>2637</b>	<b>218</b>	<b>2855</b>	<b>2943.4</b>	<b>369.0</b>	<b>3312.4</b>

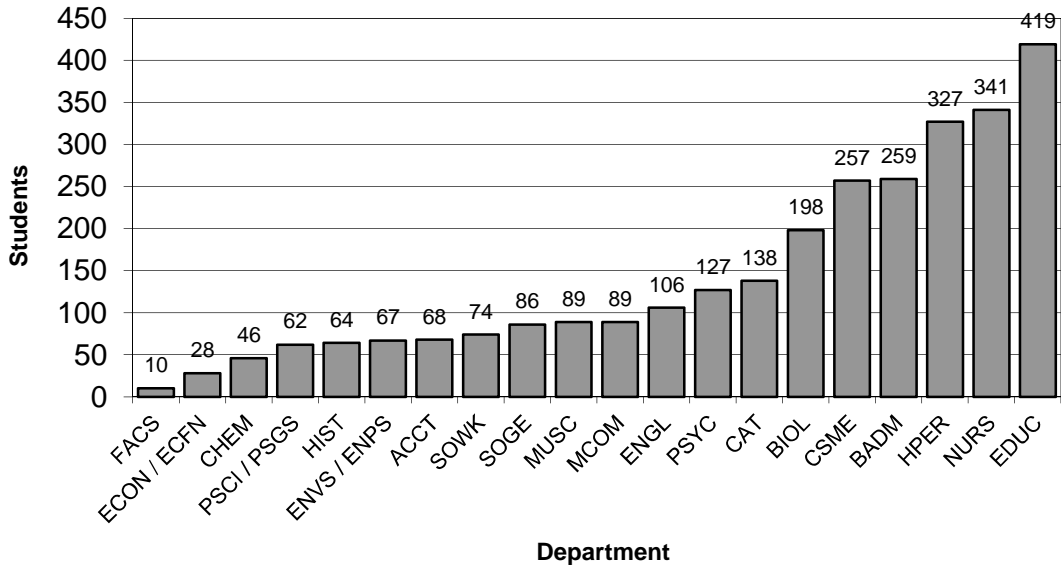
**General Explanation/Definitions.**

1. **N** is the number of undergraduate students in degree programs offered by the department. This includes first and second majors.
2. **Secondary Education and C&I** is the number of Secondary Education and C&I students with concentrations housed in that department. "Housing" is considered to be in the department if the Secondary Education coordinator for the concentration is in the department. For EDUC, numbers include Secondary Education Social Studies concentrations, and C&I Elementary Education and Social Studies concentrations; baccalaureate Elementary Education majors are not counted here.
3. **Total** is the sum of **N** and **Secondary Education**. Note that, for the EDUC department, this double-counts some students (as listed in the "Secondary Education and C&I" description above), and is therefore not likely to be useful.

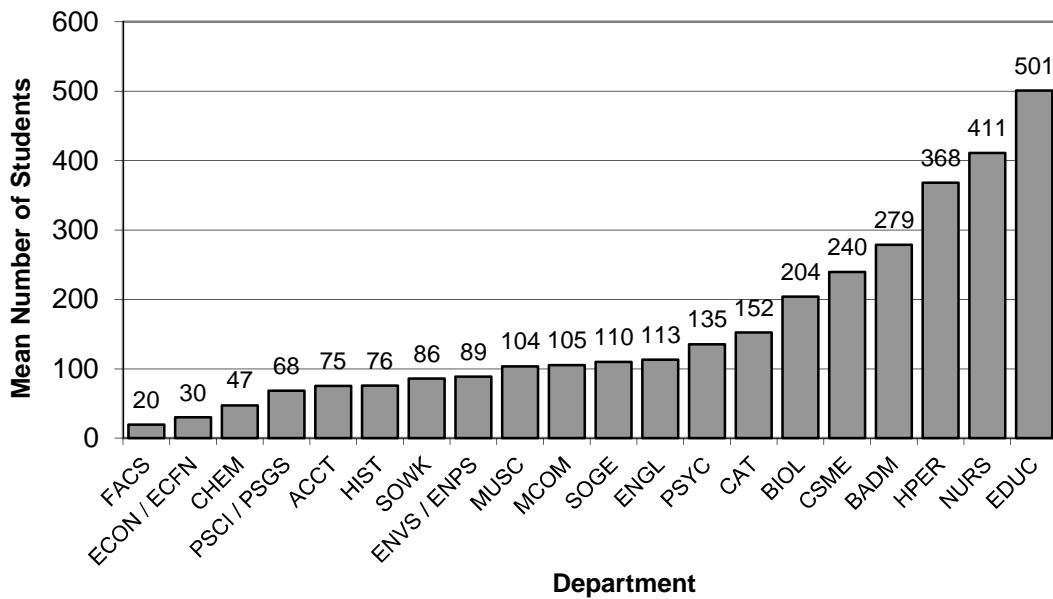
Concentration housings are as follows:

- ART / CAT:** Art
- BIOL:** Biology, Chemistry, General Science
- CSME:** Mathematics
- EDUC:** Social Studies, C&I
- FACS:** FACS (with BADM through Fall 2016)
- ENGL:** English, Spanish
- HPERS:** Health and Physical Education
- MUSC:** Music

**Graph 7a. Total Majors and Teacher Education Students, Fall 2018**  
(from Table 7)



**Graph 7B. Mean Totals of Majors and Teacher Education Students, Fall 2014-Fall 2018**  
(from Table 7)





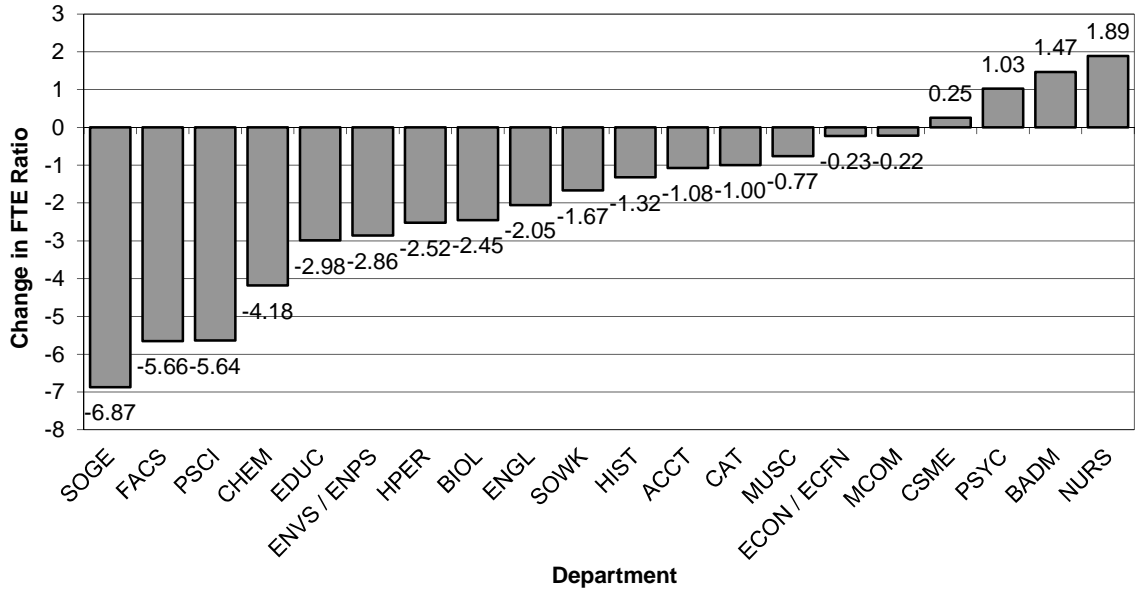
**Table 8. FTE Student to FTE Faculty Ratios**

Department	Fall 2014		Fall 2015		Fall 2016		Fall 2017		Fall 2018				Fall 2014-18	
	Ratio	Change	Ratio	Change	Ratio	Change	Ratio	Change	F-FTE	S-FTE	Ratio	Change	Mean Ratio	Change in Ratio
CAT	13.12	-0.49	12.87	-0.25	12.48	-0.64	12.09	-0.39	12.51	151.67	12.12	0.03	12.54	-1.00
MCOM	13.66	0.44	13.63	-0.03	13.18	-0.47	13.90	0.72	7.23	97.13	13.43	-0.46	13.56	-0.22
ENGL (including stretch)	13.67	-0.23	13.36	-0.31	12.83	-0.84	11.77	-1.05	20.54	238.53	11.61	-0.16	12.65	-2.05
HIST	18.89	-1.26	19.34	0.45	16.21	-2.69	16.91	0.71	6.54	114.93	17.57	0.66	17.78	-1.32
MUSC	7.97	-1.31	7.47	-0.50	7.86	-0.11	7.63	-0.23	11.65	83.93	7.20	-0.42	7.63	-0.77
<i>Arts and Humanities</i>	<i>13.14</i>	<i>-0.74</i>	<i>12.89</i>	<i>-0.25</i>	<i>12.30</i>	<i>-0.84</i>	<i>11.83</i>	<i>-0.47</i>	<i>58.47</i>	<i>686.19</i>	<i>11.74</i>	<i>-0.09</i>	<i>12.38</i>	<i>-1.40</i>
ACCT	16.86	-1.67	17.35	0.50	15.87	-0.99	14.98	-0.88	2.75	43.40	15.78	0.80	16.17	-1.08
BADM	14.60	-1.81	17.29	2.69	16.54	1.94	16.11	-0.43	9.00	144.60	16.07	-0.04	16.12	1.47
ECON / ECFN	15.60	-2.32	16.97	1.37	15.67	0.07	15.58	-0.08	5.75	88.40	15.37	-0.21	15.84	-0.23
<i>Business</i>	<i>15.40</i>	<i>-1.99</i>	<i>17.19</i>	<i>1.79</i>	<i>16.11</i>	<i>0.71</i>	<i>15.76</i>	<i>-0.35</i>	<i>17.50</i>	<i>276.40</i>	<i>15.79</i>	<i>0.03</i>	<i>16.05</i>	<i>0.39</i>
FACS	18.21	2.68	17.81	-0.40	17.56	-0.65	16.23	-1.33	3.58	44.93	12.55	-3.68	16.47	-5.66
PSCI / PSGS	15.50	1.60	16.51	1.00	12.68	-2.82	13.18	0.50	5.06	49.93	9.87	-3.31	13.55	-5.64
PSYC	15.76	-1.26	15.24	-0.52	15.54	-0.22	13.76	-1.77	8.25	138.47	16.78	3.02	15.42	1.03
SOGE	19.54	0.28	17.56	-1.98	14.47	-5.07	13.47	-1.00	10.50	133.00	12.67	-0.81	15.54	-6.87
SOWK	12.94	-1.36	12.30	-0.64	16.36	3.41	14.52	-1.83	3.92	44.20	11.28	-3.25	13.48	-1.67
<i>Social &amp; Behavioral Sci.</i>	<i>16.84</i>	<i>0.25</i>	<i>16.09</i>	<i>-0.75</i>	<i>14.99</i>	<i>-1.85</i>	<i>13.93</i>	<i>-1.07</i>	<i>31.31</i>	<i>410.53</i>	<i>13.11</i>	<i>-0.82</i>	<i>14.99</i>	<i>-3.73</i>
EDUC	11.35	-0.33	9.79	-1.56	8.97	-2.38	8.49	-0.48	12.45	104.13	8.36	-0.13	9.39	-2.98
HPER	15.06	0.63	15.30	0.24	12.99	-2.07	13.73	0.74	22.56	282.93	12.54	-1.19	13.92	-2.52
NURS	25.11	2.34	24.38	-0.74	24.25	-0.86	23.05	-1.20	6.58	177.67	27.00	3.95	24.76	1.89
<i>Education &amp; Prof. St.</i>	<i>15.69</i>	<i>0.53</i>	<i>15.23</i>	<i>-0.46</i>	<i>13.63</i>	<i>-2.06</i>	<i>13.61</i>	<i>-0.02</i>	<i>41.59</i>	<i>564.73</i>	<i>13.58</i>	<i>-0.04</i>	<i>14.35</i>	<i>-2.12</i>
BIOL	17.58	-1.45	18.63	1.05	17.42	-0.16	16.90	-0.51	12.85	194.40	15.13	-1.77	17.13	-2.45
CHEM	19.37	-0.01	19.25	-0.12	17.05	-2.32	17.68	0.63	5.89	89.47	15.19	-2.49	17.71	-4.18
CSME (including stretch)	16.16	-0.57	15.78	16.36	15.23	-1.12	15.35	16.47	18.24	299.47	16.42	1.07	15.79	0.25
ENVS / ENPS	16.49	-0.54	16.95	0.46	15.37	-1.12	14.75	-0.62	7.21	98.27	13.63	-1.12	15.44	-2.86
<i>Natural Sciences &amp; M.</i>	<i>17.02</i>	<i>-0.73</i>	<i>17.20</i>	<i>0.18</i>	<i>16.07</i>	<i>-0.95</i>	<i>16.00</i>	<i>-0.07</i>	<i>44.19</i>	<i>681.61</i>	<i>15.42</i>	<i>-0.57</i>	<i>16.34</i>	<i>-1.60</i>
<b>Shepherd University</b>	<b>15.27</b>	<b>-0.41</b>	<b>15.17</b>	<b>-0.10</b>	<b>14.17</b>	<b>-1.11</b>	<b>13.84</b>	<b>-0.33</b>	<b>193.06</b>	<b>2619.46</b>	<b>13.57</b>	<b>-0.27</b>	<b>14.40</b>	<b>-1.70</b>

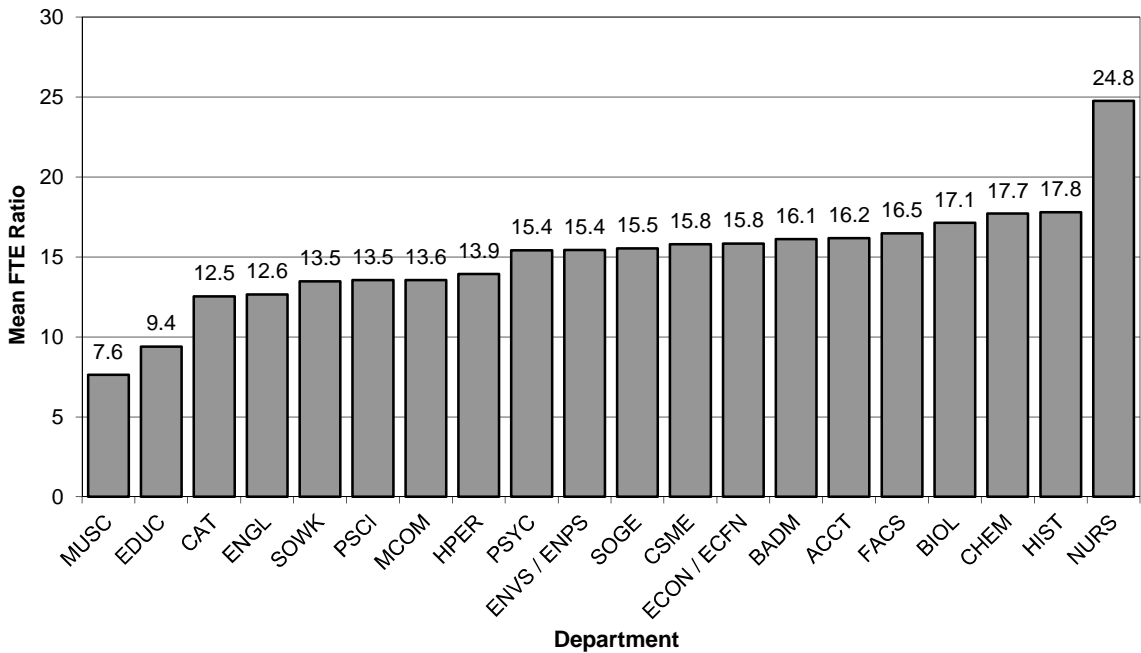
**General Explanation/Definitions.**

1. The **ratio** is obtained by dividing the student FTE by the faculty FTE.
2. One faculty **FTE** (full-time equivalent) equals 12 hours of instructional responsibility and one student FTE equals 15 credit hours.
3. The annual **change** is the current year's ratio minus the prior year's ratio.
4. The **mean ratio** is the sum of the annual ratios divided by the number of years for which data are presented (five years).
5. The **change in ratio** is the current year's ratio minus the first year's ratio.
6. Numbers include undergraduate instruction only.
7. As of Fall 2018, Stretch English and Stretch Mathematics courses are housed in English and CSME, respectively. For Fall 2017 and earlier, the FTE for these courses have been added to the English and CSME FTE totals.

**Graph 8A: Change in Ratios  
(FTE Students: FTE Faculty), 2014-2018**  
(from Table 8)



**Graph 8B: Mean Ratios  
(FTE Students: FTE Faculty), 2014-2018**  
(from Table 8)



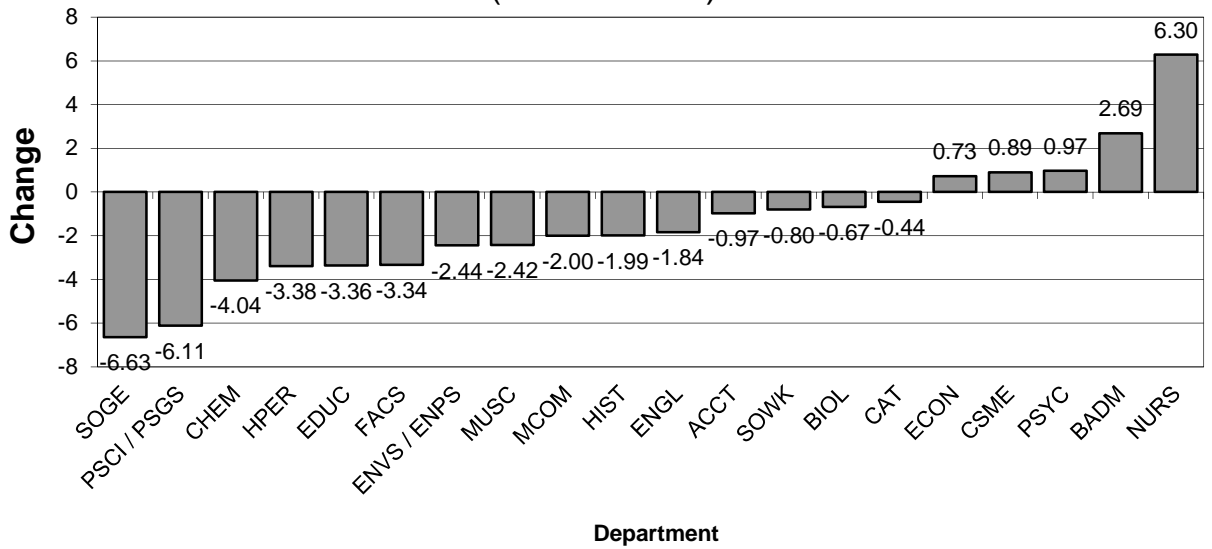
**Table 9. Ratios of Student FTE Generated by Full-Time Faculty Only to Full-Time Faculty FTE**

Department	Fall 2014			Fall 2015			Fall 2016			Fall 2017			Fall 2018					Fall 2014-18	
	Ratio	% Chg	A. Chg.	Ratio	% Chg	A. Chg.	Ratio	% Chg	A. Chg.	Ratio	% Chg	A. Chg.	F-FTE	S-FTE	Ratio	% Chg	A. Chg.	Mean Ratio	Change in Ratio
CAT	11.10	-7.4%	-0.89	11.93	7.5%	0.83	10.66	-10.7%	-1.27	10.49	-1.6%	-0.17	7.53	80.27	10.66	1.6%	0.17	10.97	-0.44
MCOM	14.29	8.3%	1.09	12.71	-11.1%	-1.59	11.36	-10.6%	-1.35	13.40	18.0%	2.04	3.98	48.93	12.29	-8.3%	-1.11	12.81	-2.00
ENGL (including stretch)	13.30	-0.2%	-0.03	13.47	1.3%	0.17	12.99	-3.6%	-0.48	11.35	-12.7%	-1.64	15.29	175.33	11.47	1.1%	0.12	12.52	-1.84
HIST	19.10	-4.1%	-0.82	16.67	-12.7%	-2.43	14.67	-12.0%	-1.99	17.32	18.0%	2.65	5.29	90.53	17.11	-1.2%	-0.21	16.98	-1.99
MUSC	11.23	-6.9%	-0.83	9.59	-14.7%	-1.65	10.27	7.1%	0.68	8.78	-14.6%	-1.49	5.63	49.60	8.81	0.4%	0.03	9.73	-2.42
Arts & Humanities	13.20	-5.5%	-0.76	12.93	-2.0%	-0.27	12.22	-5.5%	-0.71	11.67	-4.5%	-0.55	37.72	444.66	11.79	1.0%	0.12	12.36	-1.41
ACCT	16.33	-11.2%	-2.07	18.47	13.1%	2.14	16.80	-9.1%	-1.67	14.98	-10.8%	-1.82	2.50	38.40	15.36	2.5%	0.38	16.39	-0.97
BADM	14.64	-13.3%	-2.24	15.76	7.6%	1.12	14.60	-7.3%	-1.15	15.00	2.7%	0.40	3.75	65.00	17.33	15.6%	2.33	15.47	2.69
ECON / ECFN	14.28	-15.9%	-2.70	16.14	13.0%	1.86	15.56	-3.6%	-0.59	15.81	1.6%	0.26	4.25	63.80	15.01	-5.1%	-0.80	15.36	0.73
Business	14.89	-13.7%	-2.36	16.53	11.0%	1.64	15.55	-5.9%	-0.97	15.31	-1.6%	-0.24	10.50	167.20	15.92	4.0%	0.61	15.64	1.03
FACS	15.07	-5.9%	-0.95	18.00	19.5%	2.94	16.00	-11.1%	-2.00	13.39	-16.3%	-2.61	1.00	11.73	11.73	-12.4%	-1.66	14.84	-3.34
PSCI / PSGS	16.04	31.1%	3.81	16.51	2.9%	0.46	12.52	-24.2%	-3.99	12.46	-0.5%	-0.06	4.06	40.33	9.93	-20.3%	-2.52	13.49	-6.11
PSYC	14.82	-11.6%	-1.94	12.78	-13.8%	-2.05	13.14	2.8%	0.36	12.40	-5.6%	-0.73	4.50	71.07	15.79	27.3%	3.39	13.79	0.97
SOGE	18.82	-7.2%	-1.46	17.47	-7.2%	-1.35	13.26	-24.1%	-4.21	13.26	0.0%	0.00	5.50	67.00	12.18	-8.1%	-1.08	15.00	-6.63
SOWK	13.31	-6.9%	-0.98	11.91	-10.5%	-1.40	13.67	14.7%	1.76	14.93	9.3%	1.27	2.50	31.27	12.51	-16.2%	-2.43	13.27	-0.80
Social & Behavioral Sci.	16.04	-1.0%	-0.16	15.29	-4.7%	-0.75	13.29	-13.1%	-2.00	13.06	-1.7%	-0.23	17.56	221.40	12.61	-3.5%	-0.45	14.06	-3.43
EDUC	11.66	-3.0%	-0.36	10.22	-12.4%	-1.44	9.33	-8.7%	-0.89	8.82	-5.5%	-0.51	11.62	96.47	8.30	-5.8%	-0.52	9.67	-3.36
HPER	15.32	9.8%	1.37	15.03	-1.9%	-0.29	11.05	-26.5%	-3.98	13.55	22.6%	2.50	17.25	205.93	11.94	-11.9%	-1.61	13.38	-3.38
NURS	24.25	0.1%	0.03	27.05	11.5%	2.79	28.68	6.0%	1.64	27.23	-5.1%	-1.45	5.58	170.47	30.55	12.2%	3.32	27.55	6.30
Education & Prof. St.	16.18	2.5%	0.39	16.20	0.1%	0.02	13.81	-14.7%	-2.39	14.15	2.5%	0.34	34.45	472.87	13.73	-3.0%	-0.43	14.82	-2.46
BIOL	15.65	-18.0%	-3.43	17.22	10.1%	1.57	16.04	-6.9%	-1.18	14.72	-8.2%	-1.32	9.85	147.47	14.97	1.7%	0.25	15.72	-0.67
CHEM	19.75	0.2%	0.05	20.20	2.3%	0.45	17.27	-14.5%	-2.93	17.31	0.2%	0.04	5.55	87.20	15.71	-9.2%	-1.60	18.05	-4.04
CSME (including stretch)	14.58	-1.7%	-0.25	13.97	-4.2%	-0.61	13.06	-6.5%	-0.91	13.42	2.8%	0.36	13.24	204.87	15.47	15.3%	2.05	14.10	0.89
ENVS / ENPS	16.17	-9.5%	-1.69	17.24	6.6%	1.07	15.32	-11.2%	-1.92	14.63	-4.5%	-0.68	6.63	91.00	13.73	-6.2%	-0.91	15.42	-2.44
Natural Sciences & M.	15.91	-8.5%	-1.47	16.37	2.9%	0.46	14.88	-9.1%	-1.49	14.52	-2.4%	-0.36	35.27	530.54	15.04	3.6%	0.52	15.35	-0.87
<b>Shepherd University</b>	<b>15.13</b>	<b>-4.6%</b>	<b>-0.72</b>	<b>15.17</b>	<b>0.3%</b>	<b>0.04</b>	<b>13.66</b>	<b>-9.9%</b>	<b>-1.51</b>	<b>13.45</b>	<b>-1.6%</b>	<b>-0.22</b>	<b>135.50</b>	<b>1836.67</b>	<b>13.55</b>	<b>0.8%</b>	<b>0.10</b>	<b>14.19</b>	<b>-1.58</b>

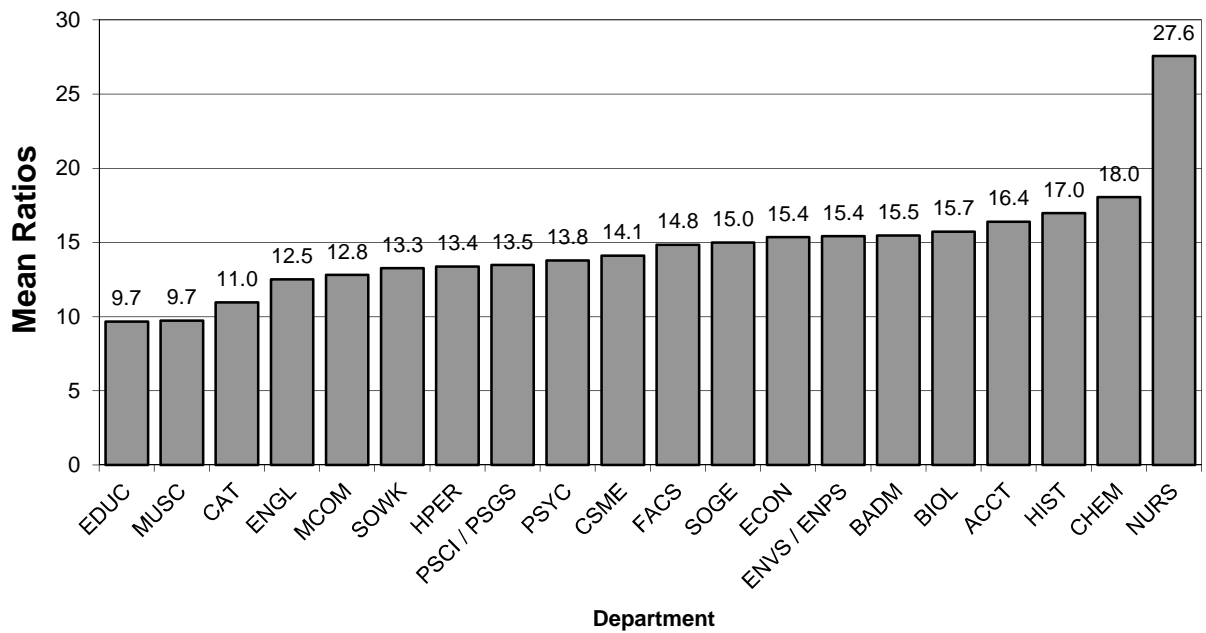
**General Explanation/Definitions.**

1. The **ratio** is obtained by dividing the student FTE generated by full-time faculty by the full-time faculty FTE. For full-time faculty, one faculty FTE (full-time equivalent) equals 12 hours of instructional responsibility and one student FTE equals 15 credit hours.
2. The **% change** is the difference between the ratio in two consecutive years divided by the ratio of the earlier year.
3. The **annual change** is the current year's ratio minus the prior year's ratio.
4. The **mean ratio** is the sum of the annual ratios divided by the number of years for which data are presented (five years).
5. The **change in ratio** is the current year's ratio minus the first year's ratio.
6. Numbers include undergraduate instruction only.
7. As of Fall 2018, Stretch English and Stretch Mathematics courses are housed in English and CSME, respectively. For Fall 2017 and earlier, the FTE for these courses have been added to the English and CSME FTE totals.

**Graph 9A: Change in FTE Ratios  
(Student FTE: Faculty FTE for Full-Time Faculty),  
2014-2018  
(from Table 9)**



**Graph 9B: Mean FTE Ratios  
Student FTE: Faculty FTE for Full-Time Faculty),  
2014-2018  
(from Table 9)**



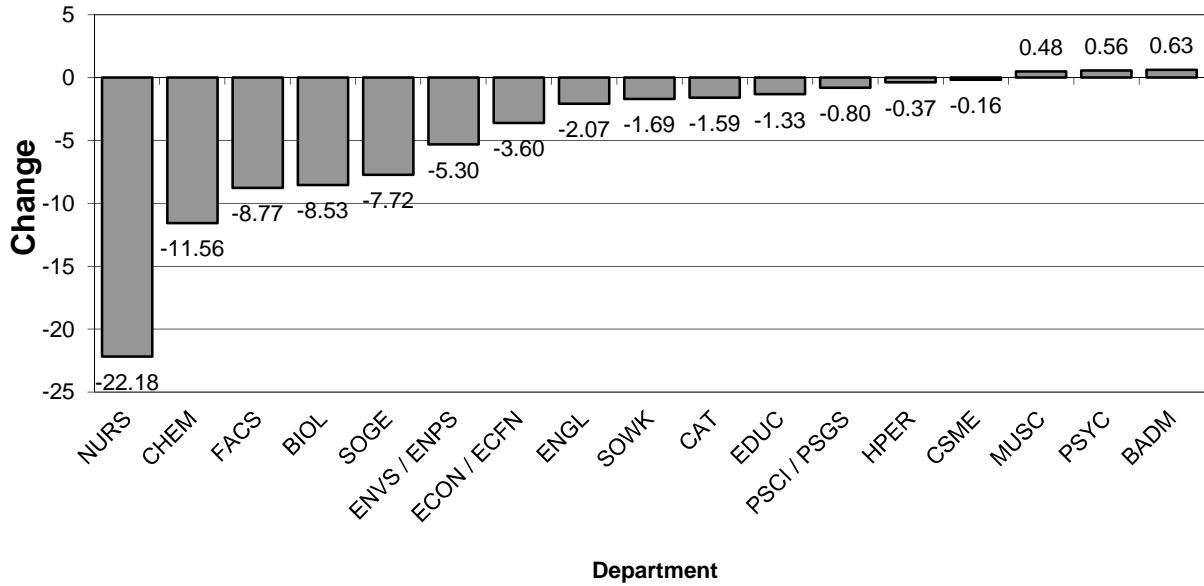
**Table 10. Ratios of Student FTE Generated by Part-Time Faculty Only to Part-Time Faculty FTE**

Department	Fall 2014			Fall 2015			Fall 2016			Fall 2017			Fall 2018			Fall 2014-18			
	Ratio	% Chg	A. Chg.	Ratio	% Chg	A. Chg.	Ratio	% Chg	A. Chg.	Ratio	% Chg	A. Chg.	F-FTE	S-FTE	Ratio	% Chg	A. Chg.	Mean Ratio	Change in Ratio
CAT	15.93	0.2%	0.03	13.85	-13.1%	-2.08	16.03	15.8%	2.18	15.46	-3.5%	-0.57	4.98	71.40	14.34	-7.3%	-1.12	15.12	-1.59
MCOM	12.97	-2.0%	-0.26	14.83	14.3%	1.86	16.00	7.9%	1.17	14.62	-8.6%	-1.38	3.25	48.20	14.83	1.5%	0.21	14.65	1.86
ENGL (including stretch)	14.10	-2.5%	-0.36	13.18	-6.5%	-0.92	12.56	-4.7%	-0.62	12.61	0.4%	0.05	5.25	63.20	12.04	-4.5%	-0.57	12.90	-2.07
HIST	18.75	-8.5%	-1.74	22.49	20.0%	3.75	19.51	-13.3%	-2.99	15.98	-18.1%	-3.53	1.25	24.40	19.52	22.1%	3.54	19.25	0.77
MUSC	5.22	-28.5%	-2.08	6.02	15.2%	0.79	6.36	5.7%	0.34	6.16	-3.2%	-0.20	6.02	34.33	5.70	-7.4%	-0.46	5.89	0.48
<i>Arts &amp; Humanities</i>	13.07	-5.1%	-0.70	12.84	-1.8%	-0.23	12.41	-3.4%	-0.43	12.11	-2.4%	-0.29	20.75	241.53	11.64	-3.9%	-0.47	12.41	-1.43
ACCT	20.00	4.2%	0.80	11.20	-44.0%	-8.80	5.60	-50.0%	-5.60	N/A	N/A	N/A	0.25	5.00	20.00	N/A	N/A	14.20	N/A
BADM	14.53	-5.5%	-0.84	20.24	39.3%	5.71	18.09	-10.6%	-2.15	16.95	-6.3%	-1.14	5.25	79.60	15.16	-10.6%	-1.79	17.00	0.63
ECON / ECFN	20.00	-1.7%	-0.34	19.33	-3.4%	-0.67	16.00	-17.2%	-3.33	14.93	-6.7%	-1.07	1.50	24.60	16.40	9.8%	1.47	17.33	-3.60
<i>Business</i>	16.72	-5.7%	-1.01	18.93	13.2%	2.21	17.09	-9.7%	-1.84	16.50	-3.4%	-0.58	7.00	109.20	15.60	-5.5%	-0.90	16.97	-1.12
FACS	21.64	57.6%	7.91	17.27	-20.2%	-4.37	18.50	7.1%	1.23	17.74	-4.1%	-0.76	2.58	33.20	12.87	-27.5%	-4.87	17.60	-8.77
PSCI / PSGS	10.40	-52.6%	-11.52	N/A	N/A	N/A	13.60	N/A	N/A	15.80	16.2%	2.20	1.00	9.60	9.60	-39.2%	-6.20	12.35	-0.80
PSYC	17.41	-0.1%	-0.01	19.71	13.2%	2.30	19.49	-1.2%	-0.23	15.62	-19.8%	-3.86	3.75	67.40	17.97	15.0%	2.35	18.04	0.56
SOGE	20.92	20.4%	3.55	17.73	-15.2%	-3.19	16.00	-9.8%	-1.73	13.85	-13.4%	-2.15	5.00	66.00	13.20	-4.7%	-0.65	16.34	-7.72
SOWK	10.80	-25.0%	-3.60	14.40	33.3%	3.60	42.40	194.4%	28.00	13.60	-67.9%	-28.80	1.42	12.93	9.11	-33.0%	-4.49	18.06	-1.69
<i>Social &amp; Behavioral Sci.</i>	18.70	6.4%	1.12	18.36	-1.9%	-0.35	17.96	-2.2%	-0.40	15.30	-14.8%	-2.65	13.75	189.13	13.75	-10.1%	-1.55	16.82	-4.95
EDUC	10.57	41.5%	3.10	8.14	-23.0%	-2.43	7.41	-8.9%	-0.73	6.00	-19.1%	-1.41	0.83	7.67	9.24	54.0%	3.24	8.27	-1.33
HPER	14.87	0.5%	0.08	15.45	3.9%	0.57	14.95	-3.2%	-0.50	14.21	-4.9%	-0.74	5.31	77.00	14.50	2.0%	0.29	14.80	-0.37
NURS	29.38	573.8%	25.02	7.47	-74.6%	-21.91	9.45	26.5%	1.98	6.02	-36.3%	-3.43	1.00	7.20	7.20	19.7%	1.18	11.90	-22.18
<i>Education &amp; Prof. St.</i>	15.03	6.8%	0.96	13.93	-7.3%	-1.10	13.32	-4.4%	-0.61	11.60	-12.9%	-1.71	7.14	91.87	12.87	10.9%	1.26	13.35	-2.16
BIOL	24.18	28.1%	5.30	21.94	-9.2%	-2.23	20.32	-7.4%	-1.62	20.59	1.3%	0.27	3.00	46.93	15.64	-24.0%	-4.95	20.54	-8.53
CHEM	18.44	5.5%	0.97	16.98	-7.9%	-1.46	16.50	-2.8%	-0.48	18.80	13.9%	2.30	0.33	2.27	6.88	-63.4%	-11.92	15.52	-11.56
CSME (Including stretch)	19.08	-2.1%	-0.42	18.61	-2.5%	-0.47	19.51	4.8%	0.90	20.43	4.7%	0.92	5.00	94.60	18.92	-7.4%	-1.51	19.31	-0.16
ENVS / ENPS	17.84	18.5%	2.78	16.00	-10.3%	-1.84	15.52	-3.0%	-0.48	14.96	-3.6%	-0.56	0.58	7.27	12.53	-16.2%	-2.43	15.37	-5.30
<i>Natural Sciences &amp; M.</i>	19.76	6.5%	1.20	18.91	-4.3%	-0.85	18.73	-0.9%	-0.17	19.45	3.9%	0.72	8.91	151.07	16.96	-12.8%	-2.50	18.76	-2.80
<b>Shepherd University</b>	<b>15.50</b>	<b>0.7%</b>	<b>0.11</b>	<b>15.16</b>	<b>-2.2%</b>	<b>-0.34</b>	<b>15.02</b>	<b>-1.0%</b>	<b>-0.14</b>	<b>14.65</b>	<b>-2.5%</b>	<b>-0.37</b>	<b>57.55</b>	<b>782.80</b>	<b>13.60</b>	<b>-7.1%</b>	<b>-1.05</b>	<b>14.79</b>	<b>-1.90</b>

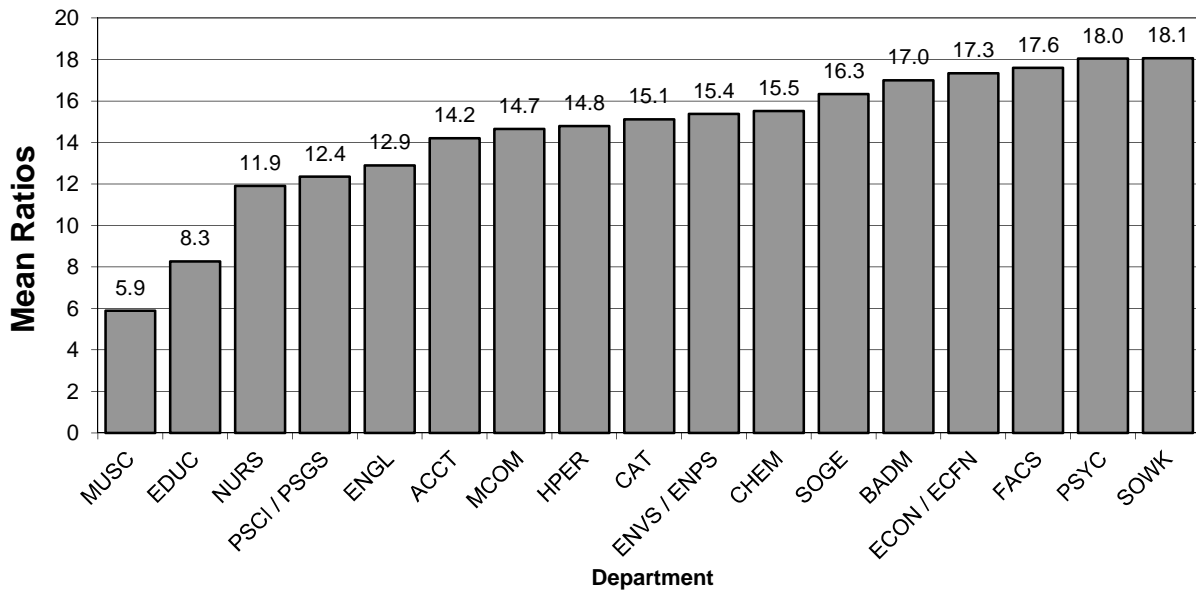
**General Explanation/Definitions.**

1. The **ratio** is obtained by dividing the student FTE generated by part-time faculty by the part-time faculty FTE. For part-time faculty, one faculty FTE (full-time equivalent) equals 15 hours of instructional responsibility and one student FTE equals 15 credit hours.
2. The **% change** is the difference between the ratio in two consecutive years divided by the ratio of the earlier year.
3. The **annual change** is the current year's ratio minus the prior year's ratio.
4. The **mean ratio** is the sum of the annual ratios divided by the number of years for which data are presented (five years).
5. The **change in ratio** is the current year's ratio minus the first year's ratio.
6. Numbers include undergraduate instruction only.
7. As of Fall 2018, Stretch English and Stretch Mathematics courses are housed in English and CSME, respectively. For Fall 2017 and earlier, the FTE for these courses have been added to the English and CSME FTE totals.

**Graph 10A: Change in FTE Ratios  
(Student FTE: Faculty FTE for Part-Time Faculty),  
2014-2018  
(from Table 10)**



**Graph 10B: Mean FTE Ratios  
(Student FTE: Faculty FTE for Part-Time Faculty),  
2014-2018  
(from Table 10)**



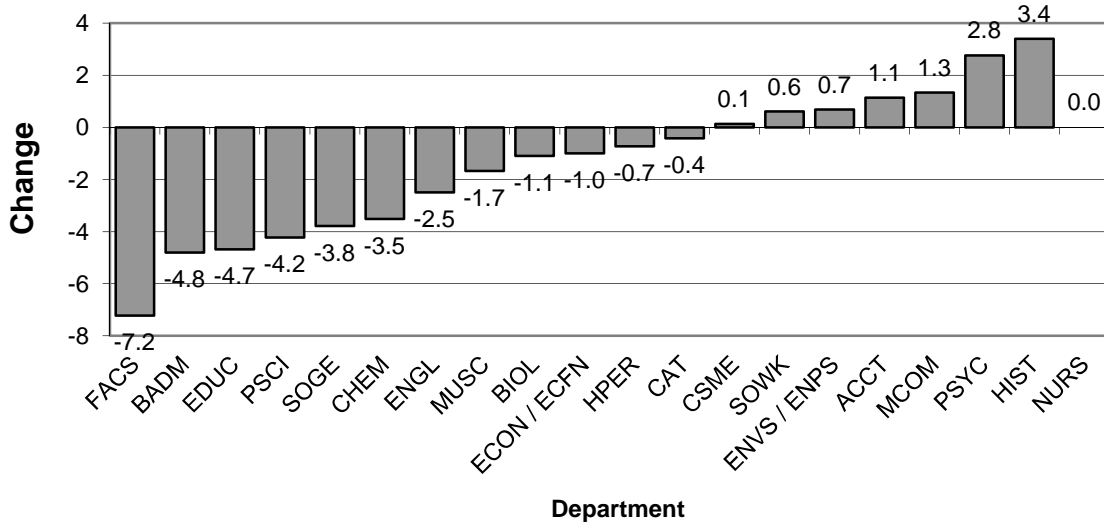
**Table 11. Student-to-Faculty FTE Ratios in Lower Level Courses**

Department	Fall 2014			Fall 2015			Fall 2016			Fall 2017			Fall 2018					Fall 2014-18	
	Ratio	% Chg.	A. Chg.	Ratio	% Chg.	A. Chg.	Ratio	% Chg.	A. Chg.	Ratio	% Chg.	A. Chg.	Faculty FTE	Student FTE	Ratio	% Chg.	A. Chg.	Mean Ratio	Change in Ratio
CAT	15.37	0.02	0.35	13.92	-0.09	-1.45	15.11	0.09	1.19	14.43	-0.05	-0.68	7.07	105.67	14.95	0.04	0.52	14.75	-0.42
MCOM	14.11	0.06	0.82	15.80	0.12	1.69	15.60	-0.01	-0.20	15.93	0.02	0.33	3.25	50.20	15.45	-0.03	-0.48	15.38	1.34
ENGL (including stretch)	14.53	-0.02	-0.26	13.96	-0.04	-0.56	13.47	-0.04	-0.49	12.57	-0.07	-0.89	16.06	193.13	12.03	-0.04	-0.55	13.31	-2.50
HIST	18.99	-0.16	-3.69	21.44	0.13	2.46	18.86	-0.12	-2.59	20.05	0.06	1.19	3.58	80.13	22.38	0.12	2.34	20.34	3.40
MUSC	10.00	-0.06	-0.67	9.73	-0.03	-0.27	8.68	-0.11	-1.05	9.17	0.06	0.49	5.85	48.77	8.34	-0.09	-0.83	9.18	-1.67
<i>Arts &amp; Humanities</i>	14.63	-0.05	-0.80	14.62	0.00	-0.01	14.03	-0.04	-0.59	13.60	-0.03	-0.42	35.81	477.90	13.35	-0.02	-0.26	14.05	-1.29
ACCT	17.47	0.02	0.27	15.60	-0.11	-1.87	13.12	-0.16	-2.48	19.60	0.49	6.48	1.00	18.60	18.60	-0.05	-1.00	16.88	1.13
BADM	36.00	0.82	16.27	48.80	0.36	12.80	32.00	-0.34	-16.80	26.80	-0.16	-5.20	0.50	15.60	31.20	0.16	4.40	34.96	-4.80
ECON / ECFN	18.50	-0.02	-0.40	18.24	-0.01	-0.26	16.70	-0.08	-1.54	16.65	0.00	-0.05	4.00	70.00	17.50	0.05	0.85	17.52	-1.00
<i>Business</i>	18.99	0.02	0.40	18.91	0.00	-0.08	16.58	-0.12	-2.33	18.11	0.09	1.53	5.50	104.20	18.95	0.05	0.84	18.31	-0.05
FACS	21.53	75.7%	9.28	19.70	-0.08	-1.83	19.05	-0.03	-0.66	17.67	-0.07	-1.38	1.58	22.60	14.30	-0.19	-3.36	18.45	-7.23
PSCI / PSGS	15.51	-0.14	-2.63	18.33	0.18	2.82	17.40	-0.05	-0.93	16.14	-0.07	-1.26	2.83	31.93	11.28	-0.30	-4.85	15.73	-4.23
PSYC	16.18	-0.09	-1.69	14.86	-0.08	-1.32	14.82	0.00	-0.04	14.82	0.00	0.00	4.08	77.27	18.94	0.28	4.12	15.92	2.76
SOGE	22.40	-0.04	-0.84	20.21	-0.10	-2.19	19.24	-0.05	-0.97	18.78	-0.02	-0.46	4.75	88.40	18.61	-0.01	-0.17	19.85	-3.79
SOWK	9.91	-0.42	-7.06	16.36	0.65	6.45	17.97	0.10	1.61	10.52	-0.41	-7.45	0.33	3.47	10.52	0.00	0.00	13.05	0.61
<i>Social &amp; Behavioral Sci.</i>	18.57	-3.1%	-0.60	17.78	-4.3%	-0.80	17.24	-3.0%	-0.53	16.63	-3.6%	-0.62	13.57	223.67	16.48	-0.9%	-0.14	17.34	-2.09
EDUC	15.73	-0.05	-0.89	13.15	-0.16	-2.58	11.07	-0.16	-2.09	12.08	0.09	1.01	1.08	11.93	11.05	-0.09	-1.03	12.62	-4.69
HPER	18.18	0.08	1.35	18.41	0.01	0.23	15.53	-0.16	-2.88	17.63	0.14	2.10	9.81	171.13	17.44	-0.01	-0.19	17.44	-0.73
NURS	13.02	0.58	4.77	N/A	N/A	N/A	N/A	N/A	N/A	N/A	N/A	N/A	0.00	0.00	N/A	N/A	N/A	13.02	N/A
<i>Education &amp; Prof. St.</i>	17.75	0.08	1.32	17.84	0.00	0.08	15.05	-0.16	-2.79	17.07	0.13	2.02	10.89	183.06	16.81	-0.02	-0.26	16.90	-0.94
BIOL	18.92	-0.04	-0.85	19.68	0.04	0.76	18.04	-0.08	-1.64	19.44	0.08	1.40	7.83	139.53	17.82	-0.08	-1.62	18.78	-1.10
CHEM	19.66	-0.04	-0.78	21.02	0.07	1.36	17.73	-0.16	-3.29	19.25	0.09	1.52	3.67	59.27	16.15	-0.16	-3.10	18.76	-3.51
CSME (including stretch)	17.82	-4.5%	-0.84	17.71	-0.6%	-0.11	17.11	-3.4%	-0.60	17.12	0.1%	0.01	11.66	209.20	17.94	4.8%	0.82	17.54	0.13
ENVS / ENPS	15.57	-0.05	-0.87	16.62	0.07	1.05	15.83	-0.05	-0.79	14.91	-0.06	-0.92	3.33	54.13	16.26	0.09	1.34	15.84	0.68
<i>Natural Sciences &amp; M.</i>	17.99	-0.05	-0.94	18.56	0.03	0.57	17.23	-0.07	-1.33	17.76	0.03	0.53	26.49	462.13	17.45	-0.02	-0.31	17.80	-0.55
<b>Shepherd University</b>	<b>16.78</b>	<b>-2.5%</b>	<b>-0.42</b>	<b>16.82</b>	<b>0.3%</b>	<b>0.05</b>	<b>15.66</b>	<b>-6.6%</b>	<b>-1.11</b>	<b>15.93</b>	<b>1.7%</b>	<b>0.26</b>	<b>92.26</b>	<b>1450.96</b>	<b>15.73</b>	<b>-1.3%</b>	<b>-0.20</b>	<b>16.18</b>	<b>-1.05</b>

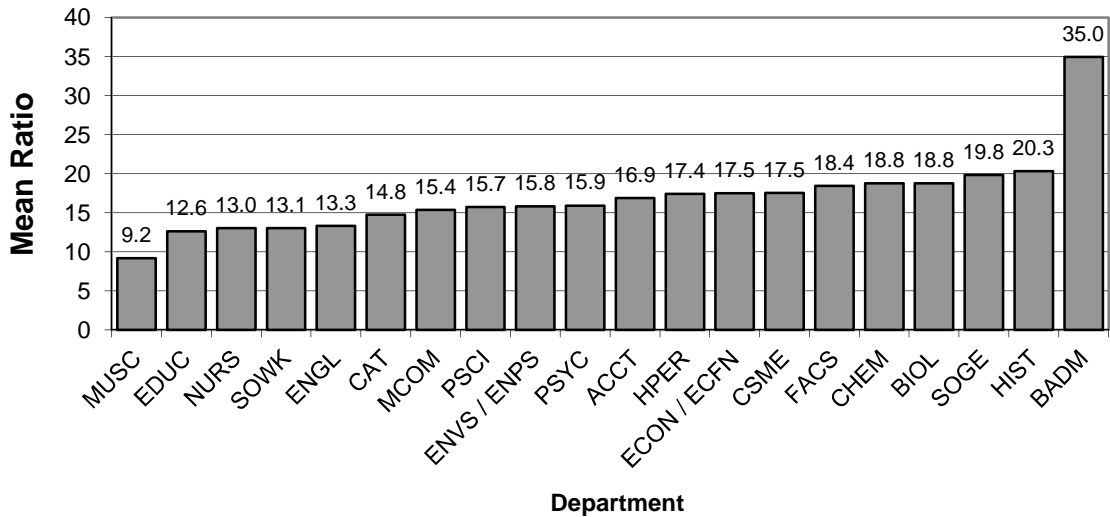
**General Explanation/Definitions.**

1. The **ratio** is obtained by dividing the student FTE by the faculty FTE .
2. **Lower level** includes 100 and 200 level courses.
3. The **% change** is the difference between the ratio in two consecutive years divided by the ratio of the earlier year.
4. The **annual change** (A. Chg.) is the current year's ratio minus the prior year's ratio.
5. The **mean ratio** is the sum of the annual ratios divided by the number of years for which data are presented (five years).
6. The **change in ratio** is the current year's ratio minus the earliest year's ratio.
7. Numbers include undergraduate instruction only.
8. As of Fall 2018, Stretch English and Stretch Mathematics courses are housed in English and CSME, respectively. For Fall 2017 and earlier, the FTE for these courses have been added to the English and CSME FTE totals.

**Graph 11A: Change in Student FTE to Faculty FTE Ratios in Lower Level Courses, 2014 - 2018**  
(from Table 11)



**Graph 11B: Mean Student FTE to Faculty FTE Ratios in Lower Level Courses, 2014 - 2018**  
(from Table 11)





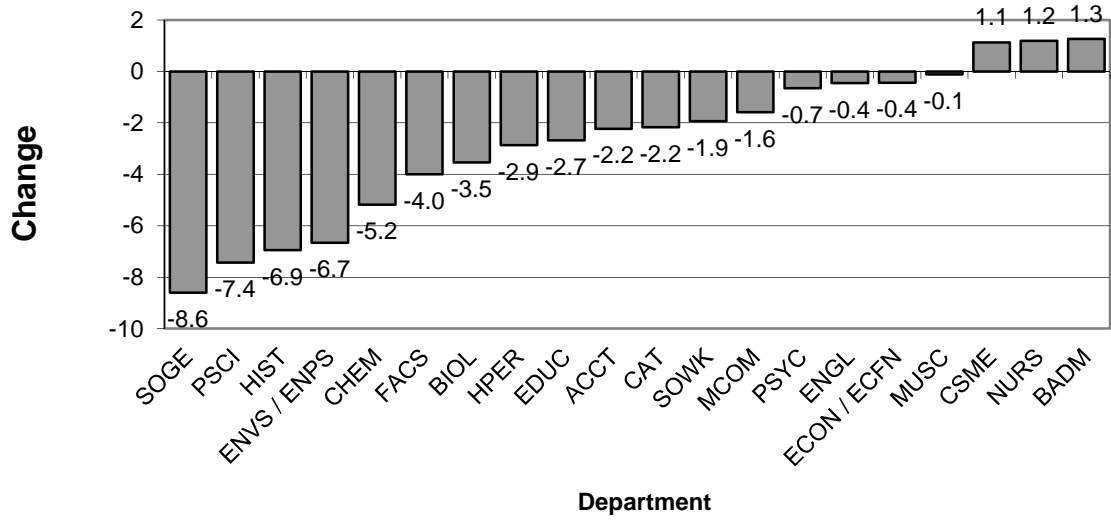
**Table 12. Student-to-Faculty FTE Ratios in Upper Level Courses**

Department	Fall 2014			Fall 2015			Fall 2016			Fall 2017			Fall 2018					Fall 2014-18	
	Ratio	% Chg.	A. Chg.	Ratio	% Chg.	A. Chg.	Ratio	% Chg.	A. Chg.	Ratio	% Chg.	A. Chg.	Faculty FTE	Student FTE	Ratio	% Chg.	A. Chg.	Mean Ratio	Change in Ratio
CAT	10.62	-0.09	-1.00	11.68	0.10	1.06	9.61	-0.18	-2.06	9.24	-0.04	-0.37	5.45	46.00	8.44	-0.09	-0.80	9.92	-2.18
MCOM	13.38	0.02	0.22	12.18	-0.09	-1.20	11.84	-0.03	-0.34	12.02	0.02	0.18	3.98	46.93	11.79	-0.02	-0.23	12.24	-1.59
ENGL	10.58	-0.06	-0.63	11.45	0.08	0.87	10.61	-0.07	-0.85	8.69	-0.18	-1.91	4.48	45.40	10.13	0.17	1.44	10.29	-0.45
HIST	18.70	0.27	4.03	14.75	-0.21	-3.95	11.47	-0.22	-3.29	12.24	0.07	0.77	2.96	34.80	11.76	-0.04	-0.48	13.78	-6.95
MUSC	6.18	-0.22	-1.75	5.21	-0.16	-0.96	7.09	0.36	1.87	6.36	-0.10	-0.73	5.80	35.17	6.06	-0.05	-0.29	6.18	-0.11
<i>Arts &amp; Humanities</i>	<i>10.81</i>	<i>-0.04</i>	<i>-0.44</i>	<i>10.24</i>	<i>-0.05</i>	<i>-0.57</i>	<i>9.77</i>	<i>-0.05</i>	<i>-0.47</i>	<i>9.08</i>	<i>-0.07</i>	<i>-0.69</i>	<i>22.67</i>	<i>208.30</i>	<i>9.19</i>	<i>0.01</i>	<i>0.11</i>	<i>9.82</i>	<i>-1.62</i>
ACCT	16.40	-0.17	-3.26	18.86	0.15	2.46	17.83	-0.05	-1.03	12.34	-0.31	-5.49	1.75	24.80	14.17	0.15	1.83	15.92	-2.23
BADM	13.91	-0.13	-2.12	16.17	0.16	2.26	16.04	-0.01	-0.13	15.50	-0.03	-0.55	8.50	129.00	15.18	-0.02	-0.32	15.36	1.27
ECON / ECFN	10.96	-0.32	-5.22	14.60	0.33	3.64	13.60	-0.07	-1.00	13.14	-0.03	-0.46	1.75	18.40	10.51	-0.20	-2.63	12.56	-0.45
<i>Business</i>	<i>13.71</i>	<i>-0.18</i>	<i>-2.95</i>	<i>16.31</i>	<i>0.19</i>	<i>2.60</i>	<i>15.89</i>	<i>-0.03</i>	<i>-0.42</i>	<i>14.71</i>	<i>-0.07</i>	<i>-1.18</i>	<i>12.00</i>	<i>172.20</i>	<i>14.35</i>	<i>-0.02</i>	<i>-0.36</i>	<i>15.00</i>	<i>0.64</i>
FACS	15.17	-16.7%	-3.04	15.79	4.1%	0.63	16.57	4.9%	0.77	14.71	-11.2%	-1.85	2.00	22.33	11.17	-24.1%	-3.55	14.68	-4.00
PSCI / PSGS	15.50	0.65	6.13	14.00	-0.10	-1.50	9.53	-0.32	-4.47	10.25	0.07	0.71	2.23	18.00	8.07	-0.21	-2.18	11.47	-7.43
PSYC	15.33	-0.05	-0.88	15.69	0.02	0.36	16.35	0.04	0.66	12.76	-0.22	-3.60	4.17	61.20	14.68	0.15	1.92	14.96	-0.65
SOGE	16.36	0.07	1.09	14.59	-0.11	-1.77	11.04	-0.24	-3.55	9.44	-0.14	-1.60	5.75	44.60	7.76	-0.18	-1.68	11.84	-8.60
SOWK	13.31	-0.05	-0.76	11.87	-0.11	-1.44	16.19	0.36	4.32	14.98	-0.08	-1.22	3.58	40.73	11.38	-0.24	-3.60	13.55	-1.93
<i>Social &amp; Behavioral Sci.</i>	<i>15.23</i>	<i>5.4%</i>	<i>0.78</i>	<i>14.45</i>	<i>-5.1%</i>	<i>-0.78</i>	<i>13.36</i>	<i>-7.5%</i>	<i>-1.09</i>	<i>11.85</i>	<i>-11.3%</i>	<i>-1.51</i>	<i>17.73</i>	<i>186.86</i>	<i>10.54</i>	<i>-11.0%</i>	<i>-1.31</i>	<i>13.08</i>	<i>-4.69</i>
EDUC	10.79	0.00	0.00	9.33	-0.14	-1.46	8.68	-0.07	-0.65	8.13	-0.06	-0.55	11.37	92.20	8.11	0.00	-0.02	9.01	-2.68
HPER	11.63	0.02	0.22	11.49	-0.01	-0.14	10.42	-0.09	-1.07	10.37	0.00	-0.05	12.75	111.80	8.77	-0.15	-1.60	10.54	-2.87
NURS	25.81	0.06	1.50	24.38	-0.06	-1.44	24.25	-0.01	-0.13	23.05	-0.05	-1.20	6.58	177.67	27.00	0.17	3.95	24.90	1.19
<i>Education &amp; Prof. St.</i>	<i>14.75</i>	<i>0.03</i>	<i>0.36</i>	<i>13.97</i>	<i>-0.05</i>	<i>-0.77</i>	<i>12.98</i>	<i>-0.07</i>	<i>-0.99</i>	<i>12.31</i>	<i>-0.05</i>	<i>-0.67</i>	<i>30.70</i>	<i>381.67</i>	<i>12.43</i>	<i>0.01</i>	<i>0.12</i>	<i>13.29</i>	<i>-2.31</i>
BIOL	14.49	-0.10	-1.62	16.31	0.13	1.82	15.91	-0.02	-0.40	12.64	-0.21	-3.27	5.01	54.87	10.95	-0.13	-1.68	14.06	-3.54
CHEM	18.79	0.08	1.39	16.49	-0.12	-2.29	15.72	-0.05	-0.77	14.19	-0.10	-1.53	2.22	30.20	13.60	-0.04	-0.58	15.76	-5.18
CSME	12.60	-2.0%	-0.26	12.10	-0.04	-0.50	11.91	-0.02	-0.19	11.98	0.01	0.07	6.58	90.27	13.72	0.14	1.74	12.46	1.12
ENVS / ENPS	18.04	0.01	0.10	17.41	-3.4%	-0.62	14.58	-16.3%	-2.83	14.51	-0.5%	-0.07	3.88	44.13	11.37	-21.6%	-3.14	15.18	-6.66
<i>Natural Sciences &amp; M.</i>	<i>15.01</i>	<i>-0.01</i>	<i>-0.13</i>	<i>14.69</i>	<i>-2.2%</i>	<i>-0.32</i>	<i>13.85</i>	<i>-5.7%</i>	<i>-0.83</i>	<i>12.94</i>	<i>-6.6%</i>	<i>-0.91</i>	<i>17.69</i>	<i>219.47</i>	<i>12.41</i>	<i>-4.1%</i>	<i>-0.53</i>	<i>13.78</i>	<i>-2.60</i>
<b>Shepherd University</b>	<b>13.67</b>	<b>-0.01</b>	<b>-0.19</b>	<b>13.41</b>	<b>-1.9%</b>	<b>-0.27</b>	<b>12.70</b>	<b>-5.3%</b>	<b>-0.70</b>	<b>11.86</b>	<b>-6.6%</b>	<b>-0.84</b>	<b>100.79</b>	<b>1168.50</b>	<b>11.59</b>	<b>-2.3%</b>	<b>-0.27</b>	<b>12.65</b>	<b>-2.08</b>

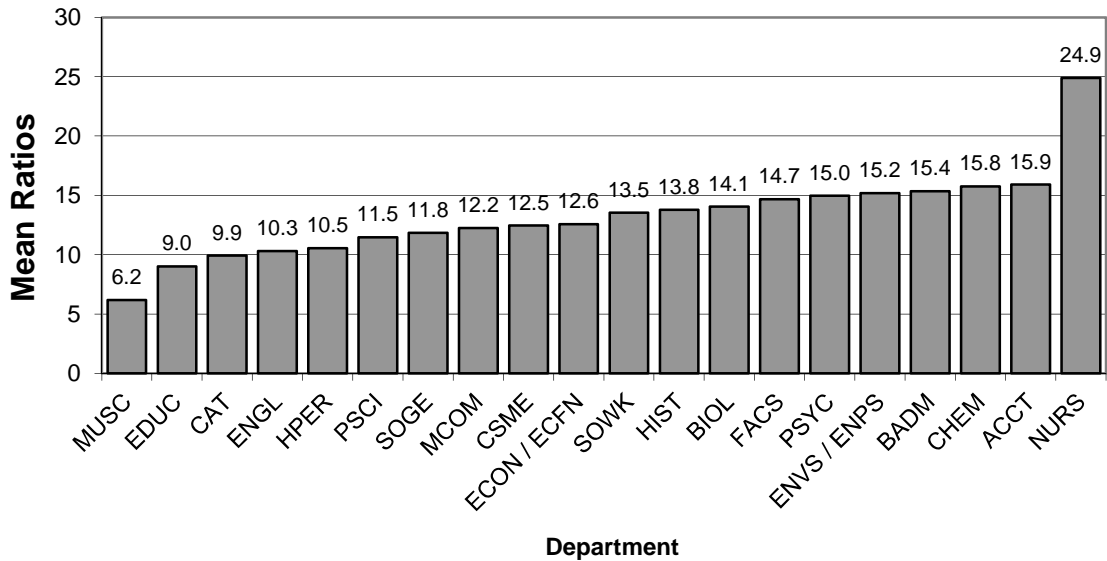
**General Explanation/Definitions.**

1. The **ratio** is obtained by dividing the student FTE by the faculty FTE.
2. **Upper level** includes 300 and 400 level courses.
3. The **% change** is the difference between the ratio in two consecutive years divided by the ratio of the earlier year.
4. The **annual change** (A. Chg.) is the current year's ratio minus the prior year's ratio.
5. The **mean ratio** is the sum of the annual ratios divided by the number of years for which data are presented (five years).
6. The **change in ratio** is the current year's ratio minus the earliest year's ratio.
7. Numbers include undergraduate instruction only.

**Graph 12A: Change in Student FTE to Faculty FTE Ratios in Upper Level Courses, 2014 - 2018**  
(from Table 12)



**Graph 12B: Mean Student FTE to Faculty FTE Ratios in Upper Level Courses, 2014 - 2018**  
(from Table 12)

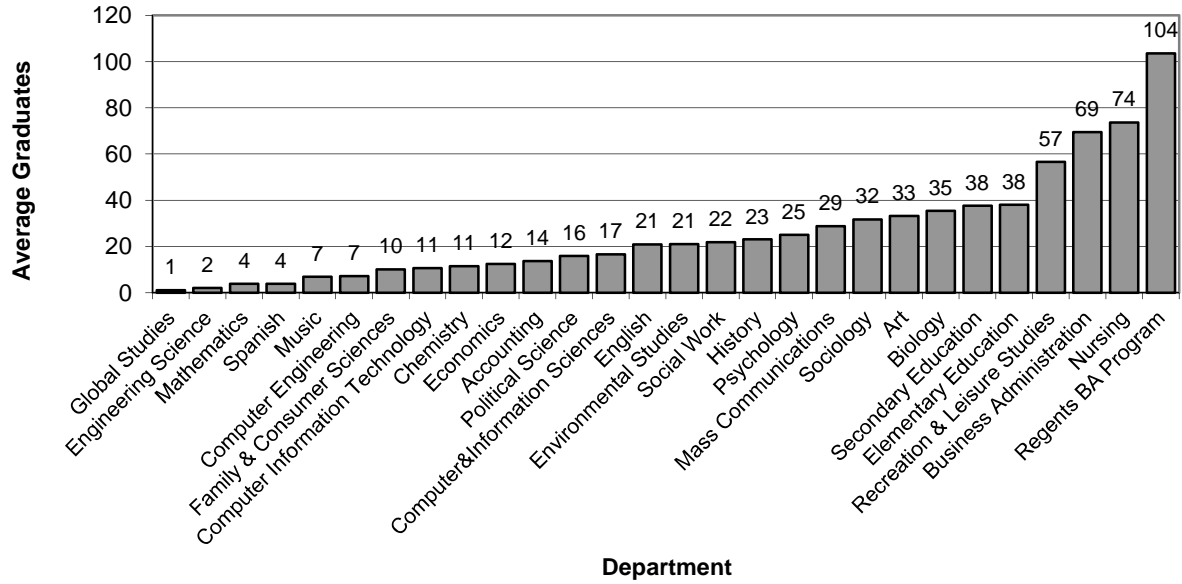


**Table 13. Graduates from Baccalaureate Programs**

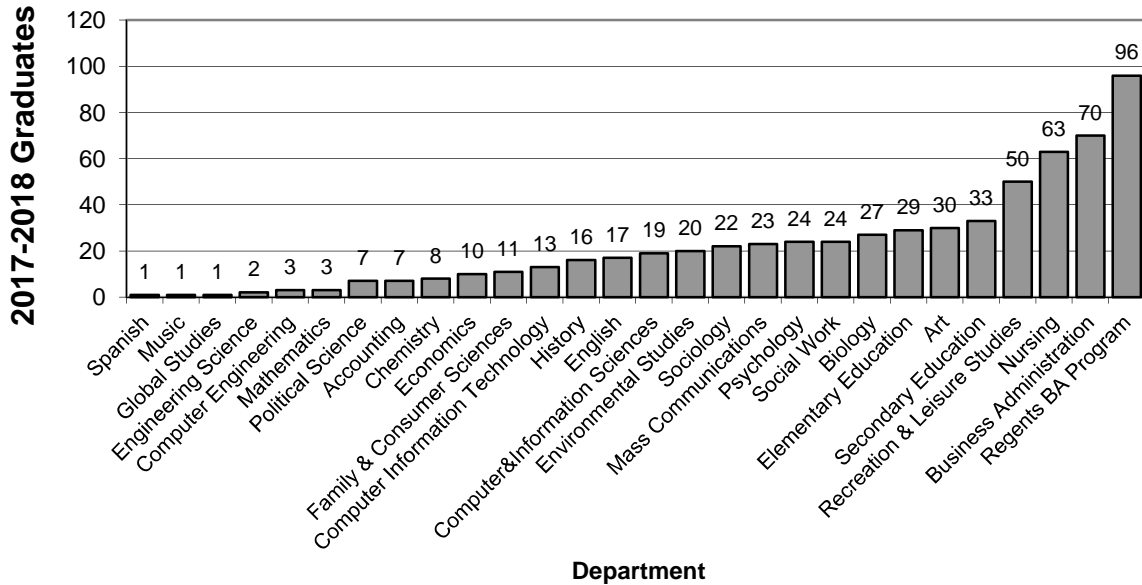
MAJORS OF GRADUATES	2013-14	2014-15	2015-16	2016-17	2017-18	Mean N	Change	%age change
Art	34	34	31	37	30	33.2	-4	-11.8%
Comm New Media	27	36	23	35	23	28.8	-4	-14.8%
English	26	19	21	21	17	20.8	-9	-34.6%
History	23	27	28	21	16	23.0	-7	-30.4%
Music	10	9	10	4	1	6.8	-9	-90.0%
Music Performance				3	3	3.0	3	N/A
Spanish	3	4	4	7	1	3.8	-2	-66.7%
<i>Arts and Humanities</i>	<b>123</b>	<b>129</b>	<b>117</b>	<b>128</b>	<b>91</b>	<b>117.6</b>	<b>-32</b>	<b>-26.0%</b>
Accounting	14	19	14	14	7	13.6	-7	-50.0%
Business Administration	77	67	72	61	70	69.4	-7	-9.1%
Economics	19	11	14	8	10	12.4	-9	-47.4%
<i>Business</i>	<b>110</b>	<b>97</b>	<b>100</b>	<b>83</b>	<b>87</b>	<b>95.4</b>	<b>-23</b>	<b>-20.9%</b>
Family & Consumer Sciences	12	8	8	11	11	10.0	-1	-8.3%
Global Studies					1	1.0	1	N/A
Political Science	19	18	17	18	7	15.8	-12	-63.2%
Psychology	27	25	25	24	24	25.0	-3	-11.1%
Sociology	43	36	25	32	22	31.6	-21	-48.8%
Social Work	22	24	19	20	24	21.8	2	9.1%
<i>Social &amp; Behavioral Sciences</i>	<b>123</b>	<b>111</b>	<b>94</b>	<b>105</b>	<b>89</b>	<b>104.4</b>	<b>-34</b>	<b>-27.6%</b>
Elementary Education	45	54	28	34	29	38.0	-16	-35.6%
Early Childhood Education			1	0	3	1.3	3	N/A
Secondary Education	35	44	47	29	33	37.6	-2	-5.7%
Art Education	3	1	5	2	4	3.0	1	33.3%
Biology Education	1	1	0	0	0	0.4	-1	-100.0%
Chemistry Education	0	1	0	0	0	0.2	0	N/A
English Education	5	5	10	6	3	5.8	-2	-40.0%
Family & Consumer Sci Education	1	0	1	1	1	0.8	0	0.0%
General Science Education	0	0	1	1	1	0.6	1	N/A
Health Education	9	12	6	4	1	6.4	-8	-88.9%
Mathematics Education	7	7	2	0	3	3.8	-4	-57.1%
Music Education	13	11	16	6	9	11.0	-4	-30.8%
Physical Education	9	13	6	5	4	7.4	-5	-55.6%
Social Studies Education	8	7	5	8	9	7.4	1	12.5%
Spanish Education	0	0	1	0	0	0.2	0	N/A
Recreation & Leisure Studies	55	76	51	51	50	56.6	-5	-9.1%
Health Promotion and Ex Sci				2	18	10.0	18	N/A
Nursing	72	75	79	79	63	73.6	-9	-12.5%
<i>E&amp;PS</i>	<b>207</b>	<b>249</b>	<b>206</b>	<b>195</b>	<b>196</b>	<b>210.6</b>	<b>-11</b>	<b>-5.3%</b>
Biology	36	33	34	47	27	35.4	-9	-25.0%
Chemistry	13	11	13	12	8	11.4	-5	-38.5%
Computer&Information Sciences	19	13	15	17	19	16.6	0	0.0%
Computer Engineering	10	11	5	7	3	7.2	-7	-70.0%
Computer Information Technology	4	11	14	11	13	10.6	9	225.0%
Engineering Science					2	2.0	2	N/A
Environmental Studies	31	13	25	16	20	21.0	-11	-35.5%
Mathematics	2	1	6	7	3	3.8	1	50.0%
<i>NS&amp;M</i>	<b>115</b>	<b>93</b>	<b>112</b>	<b>117</b>	<b>95</b>	<b>106.4</b>	<b>-20</b>	<b>-17.4%</b>
Regents BA Program	91	111	88	132	96	103.6	5	5.5%
<b>Shepherd University</b>	<b>769</b>	<b>790</b>	<b>717</b>	<b>760</b>	<b>654</b>	<b>738.0</b>	<b>-115</b>	<b>-15.0%</b>

1. Numbers are counts of graduates for the listed year. Here, the academic year runs from fall to summer.
2. The **mean** is the sum of the annual counts divided by the number of years presented (five years).
3. The **change** is the current year's number minus the first year's number.

**Graph 13A: Average Number of Baccalaureate Degrees by Major, 2013-2014 to 2017-2018 (from Table 13)**



**Graph 13B: Baccalaureate Graduates in 2017-2018 (from Table 13)**



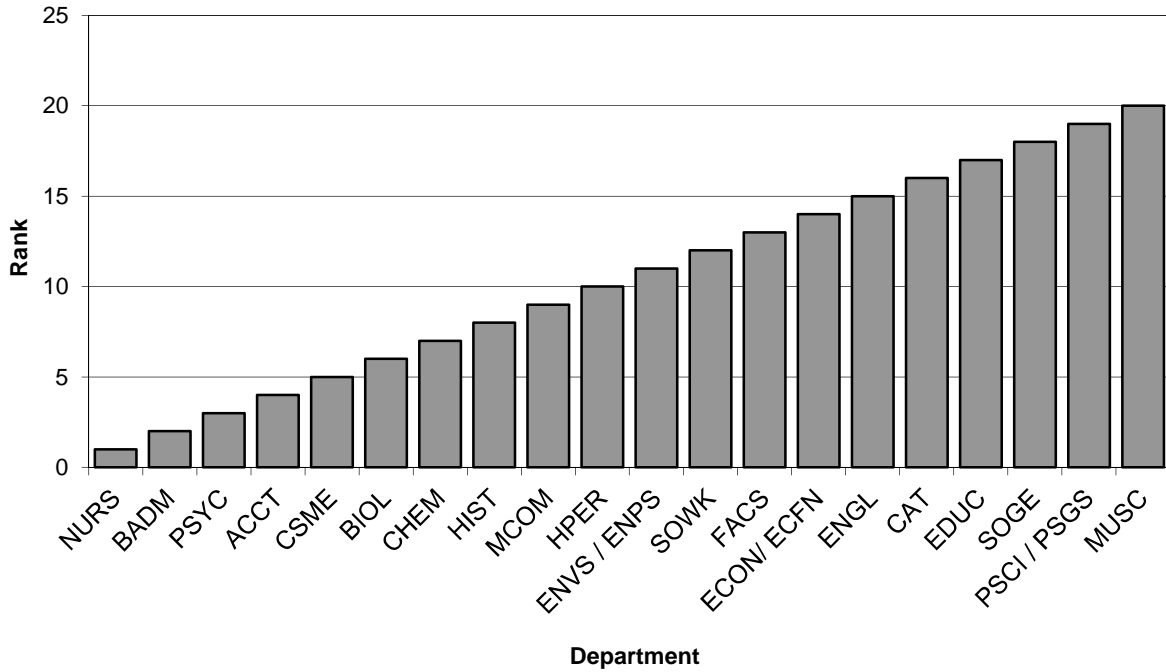
**Table 14. SCH per FTE faculty, for non-General Studies / Core Curriculum Courses**

Department	Fall 2018 numbers per FTE faculty				Fall 2014 - 2018 numbers per FTE faculty	
	FTE fac	SCH	SCH/FTE	SCH/FTE rank	Mean SCH/FTE	SCH/FTE rank
ACCT	2.75	651.00	236.73	4	239.61	3
BADM	9.00	2727.00	303.00	2	292.98	2
BIOL	6.18	1296.00	209.71	6	206.82	6
CAT	9.51	1426.00	149.95	16	141.66	18
CHEM	2.55	529.00	207.45	7	235.62	4
CSME	10.32	2206.00	213.76	5	175.11	12
ECON/ ECFN	1.75	276.00	157.71	14	177.58	11
EDUC	11.20	1522.00	135.89	17	151.95	16
ENGL	7.74	1185.00	153.10	15	122.98	19
ENVS / ENPS	3.88	662.00	170.62	11	195.49	7
FACS	2.83	476.00	168.20	13	186.02	9
HIST	3.29	587.00	178.42	8	156.05	15
HPER	19.81	3389.00	171.08	10	181.87	10
MCOM	3.98	704.00	176.88	9	164.06	14
MUSC	10.16	953.00	93.80	20	98.17	20
NURS	6.08	2712.00	446.05	1	370.59	1
PSCI / PSGS	2.31	272.00	117.75	19	145.34	17
PSYC	5.50	1411.00	256.55	3	217.96	5
SOGC	6.50	867.00	133.38	18	173.27	13
SOWK	3.92	663.00	169.13	12	188.15	8
<b>Shepherd University</b>	<b>129.26</b>	<b>24514</b>	<b>189.65</b>		<b>185.37</b>	

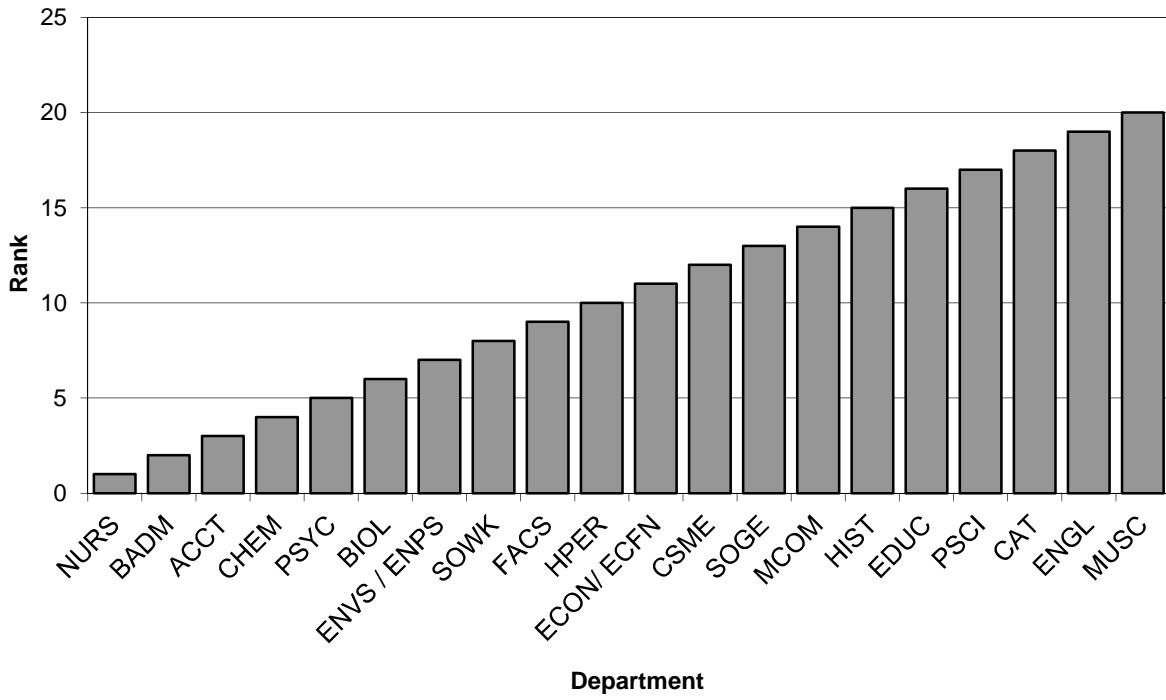
**General Explanation/Definitions.**

1. One faculty **FTE** (full-time equivalent) equals 12 hours of instructional responsibility.
2. **Majors** is the number of majors served by the program.
3. **Grads** is the number of graduates from the program.
4. **SCH** is the total number of credit hours taken by students in courses in the department.
5. **Rank** is a numerical ranking of the department based on the number in question. Ranks run from 1 (highest rank) to 20 (lowest rank).
6. Numbers are for paid courses in undergraduate programs only.
7. Courses are all courses **not** explicitly listed as General Studies or Core Curriculum courses in the appropriate Shepherd course catalogs. All GSPE courses are considered General Studies, but no foreign language courses are included (as these are General Studies requirements for B.A. programs only). Also, the Core Curriculum requirements in Writing in the Major and Capstone in the Major are not considered as Core Curriculum courses here.
8. Faculty FTE numbers for General Studies / Core Curriculum courses cannot be directly or indirectly calculated from available data. Therefore, the numbers used here are calculated based on credit-hours of courses as taken by students, not as calculated for faculty workload reporting. This results in numbers discrepant from those used elsewhere for some departments.

**Graph 14A. Overall rank, Fall 2018, non-GS/CC courses**



**Graph 14B. Overall rank, Fall 2014 - 2018, non-GS/CC courses**



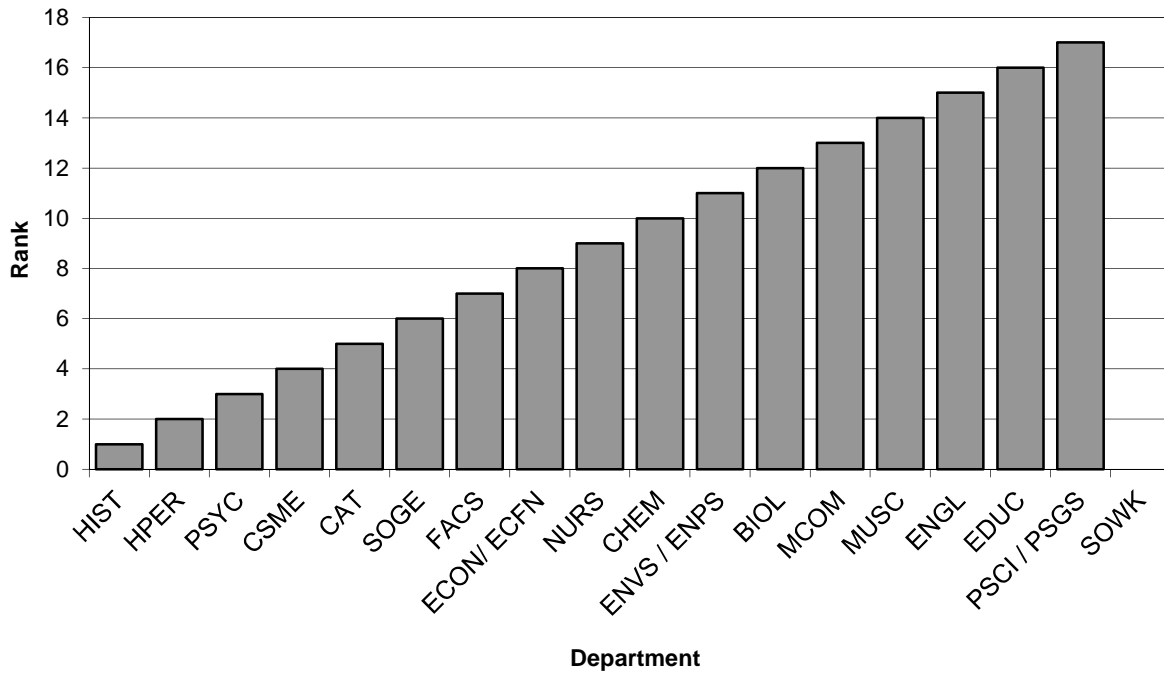
**Table 15. SCH per FTE Faculty, for General Studies / Core Curriculum Courses**

Department	Fall 2018 numbers per FTE faculty				Fall 2014 - 2018 numbers per FTE faculty	
	FTE fac	SCH	SCH/FTE	SCH/FTE rank	Mean SCH/FTE	SCH/FTE rank
ACCT						
BADM						
BIOL	6.67	1620.00	242.88	12	252.28	11
CAT	3.00	849.00	283.00	5	296.48	4
CHEM	3.33	813.00	244.14	10	284.38	7
CSME (including stretch)	7.92	2337.00	295.08	4	281.09	8
ECON/ ECFN	4.00	1050.00	262.50	8	261.68	10
EDUC	1.25	231.00	184.80	16	193.13	17
ENGL (including stretch)	12.80	2402.00	187.66	15	204.54	16
ENVS / ENPS	3.33	812.00	243.84	11	228.35	14
FACS	0.75	198.00	264.00	7	358.00	1
HIST	3.25	1137.00	349.85	1	329.04	2
HPER	2.75	855.00	310.91	2	293.22	5
MCOM	3.25	753.00	231.69	13	231.00	13
MUSC	1.49	306.00	205.37	14	213.30	15
NURS	0.50	129.00	258.00	9	316.80	3
PSCI / PSGS	2.75	477.00	173.45	17	238.15	12
PSYC	2.75	852.00	309.82	3	267.70	9
SOGE	4.00	1128.00	282.00	6	291.60	6
SOWK	0.00	0.00	N/A	N/A	115.63	18
<b>Shepherd University</b>	<b>63.79</b>	<b>15949</b>	<b>250.02</b>		<b>256.79</b>	

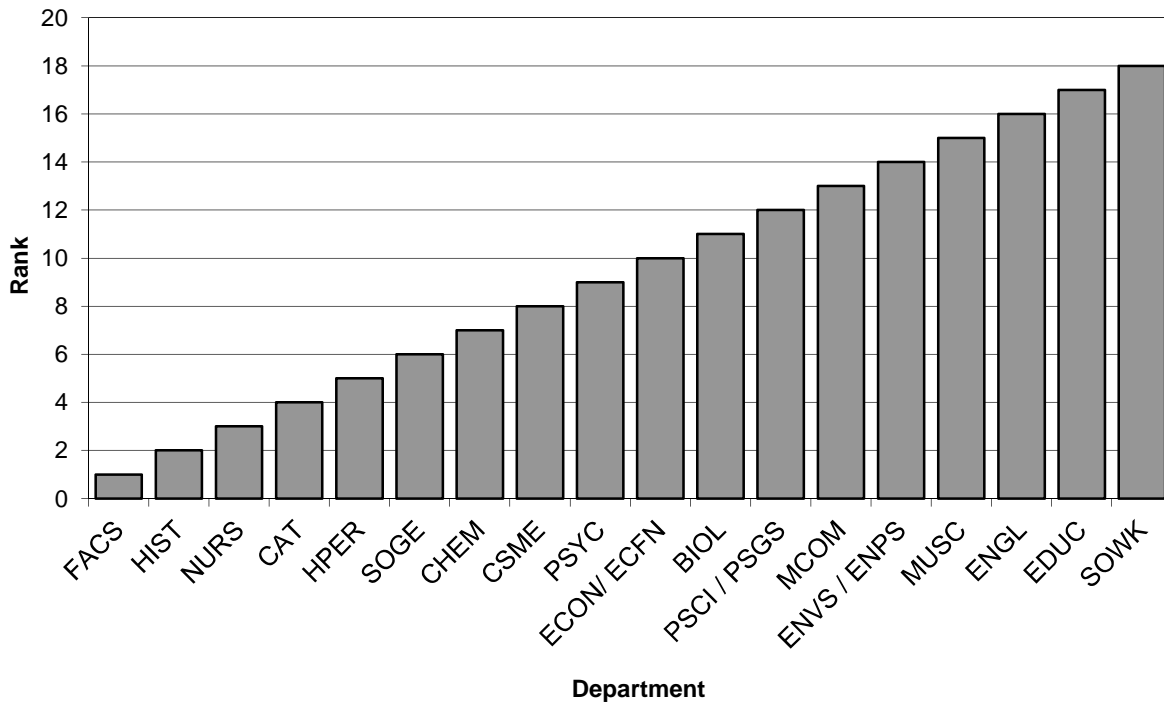
**General Explanation/Definitions.**

1. One faculty **FTE** (full-time equivalent) equals 12 hours of instructional responsibility.
2. **Majors** is the number of majors served by the program.
3. **Grads** is the number of graduates from the program.
4. **SCH** is the total number of credit hours taken by students in courses in the department.
5. **Rank** is a numerical ranking of the department based on the number in question. Ranks run from 1 (highest rank) to 20 (lowest rank).
6. Numbers are for paid courses in undergraduate programs only.
7. Courses are all courses explicitly listed as General Studies or Core Curriculum courses in the appropriate Shepherd course catalogs. All GSPE courses are considered General Studies, but no foreign language courses are included (as these are General Studies requirements for B.A. programs only). Also, the Core Curriculum requirements in Writing in the Major and Capstone in the Major are not considered as Core Curriculum courses here.
8. Faculty FTE numbers for General Studies / Core Curriculum courses cannot be directly or indirectly calculated from available data. Therefore, the numbers used here are calculated based on credit-hours of courses as taken by students, not as calculated for faculty workload reporting. This results in numbers discrepant from those used elsewhere for some departments.
9. As of Fall 2018, Stretch English and Stretch Mathematics courses are housed in English and CSME, respectively. For Fall 2017 and earlier, the FTE for these courses have been added to the English and CSME FTE totals.

**Graph 15A. Overall rank, Fall 2018, GS/CC courses**



**Graph 15B. Overall rank, Fall 2014 - 2018, GS/CC courses**





**Table 16. Core Curriculum courses by time of day, Fall 2018**

Time	Weekdays												Saturday	
	Monday		Tuesday		Wednesday		Thursday		Friday		Total		N	% tot
	N	% tot	N	% tot	N	% tot	N	% tot	N	% tot	N	% tot		
7:00 AM	0	0.0%	0	0.0%	0	0.0%	0	0.0%	0	0.0%	0	0.0%	0	N/A
8:00 AM	16	4.9%	10	3.9%	15	4.5%	9	3.8%	14	5.6%	64	4.6%	0	N/A
9:00 AM	39	11.9%	29	11.2%	37	11.0%	27	11.5%	35	14.1%	167	11.9%	0	N/A
10:00 AM	53	16.2%	21	8.1%	50	14.9%	20	8.5%	43	17.3%	187	13.3%	0	N/A
11:00 AM	49	14.9%	30	11.6%	50	14.9%	26	11.1%	39	15.7%	194	13.8%	0	N/A
12:00 PM	38	11.6%	42	16.2%	38	11.3%	38	16.2%	33	13.3%	189	13.4%	0	N/A
1:00 PM	36	11.0%	34	13.1%	37	11.0%	34	14.5%	31	12.4%	172	12.2%	0	N/A
2:00 PM	37	11.3%	23	8.9%	36	10.7%	21	8.9%	29	11.6%	146	10.4%	0	N/A
3:00 PM	26	7.9%	32	12.4%	24	7.2%	29	12.3%	16	6.4%	127	9.0%	0	N/A
4:00 PM	11	3.4%	18	6.9%	11	3.3%	16	6.8%	5	2.0%	61	4.3%	0	N/A
5:00 PM	8	2.4%	8	3.1%	10	3.0%	6	2.6%	3	1.2%	35	2.5%	0	N/A
6:00 PM	6	1.8%	5	1.9%	11	3.3%	2	0.9%	1	0.4%	25	1.8%	0	N/A
7:00 PM	5	1.5%	4	1.5%	9	2.7%	3	1.3%	0	0.0%	21	1.5%	0	N/A
8:00 PM	3	0.9%	3	1.2%	6	1.8%	3	1.3%	0	0.0%	15	1.1%	0	N/A
9:00 PM	1	0.3%	0	0.0%	1	0.3%	1	0.4%	0	0.0%	3	0.2%	0	N/A
10:00 PM	0	0.0%	0	0.0%	0	0.0%	0	0.0%	0	0.0%	0	0.0%	0	N/A
11:00 PM	0	0.0%	0	0.0%	0	0.0%	0	0.0%	0	0.0%	0	0.0%	0	N/A
<b>Total</b>	<b>328</b>	<b>23.3%</b>	<b>259</b>	<b>18.4%</b>	<b>335</b>	<b>23.8%</b>	<b>235</b>	<b>16.7%</b>	<b>249</b>	<b>17.7%</b>	<b>1406</b>	<b>100.0%</b>	<b>0</b>	<b>N/A</b>

Data derive from census-date Banner data.

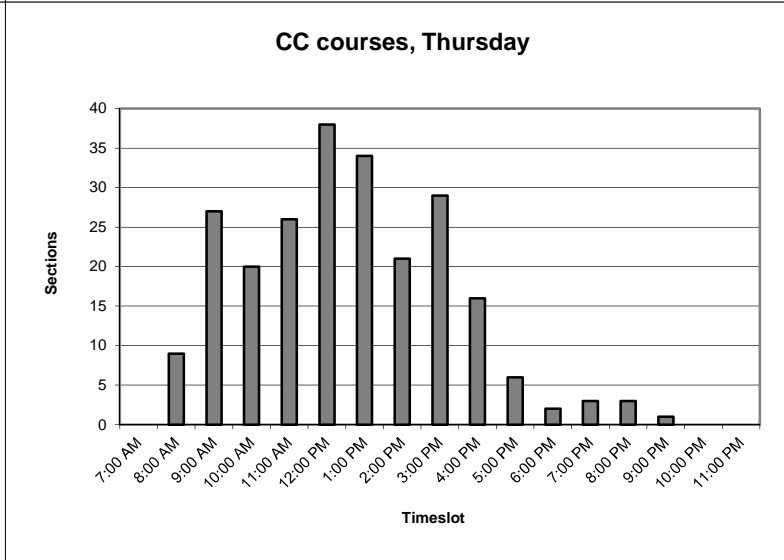
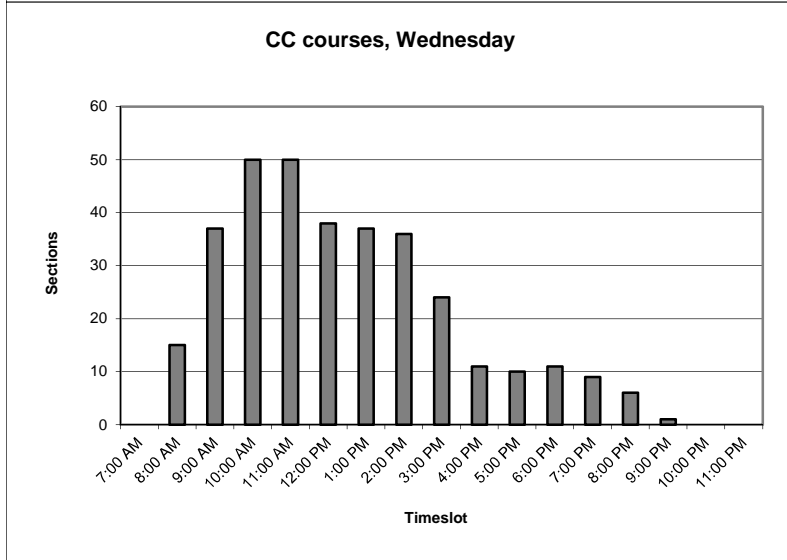
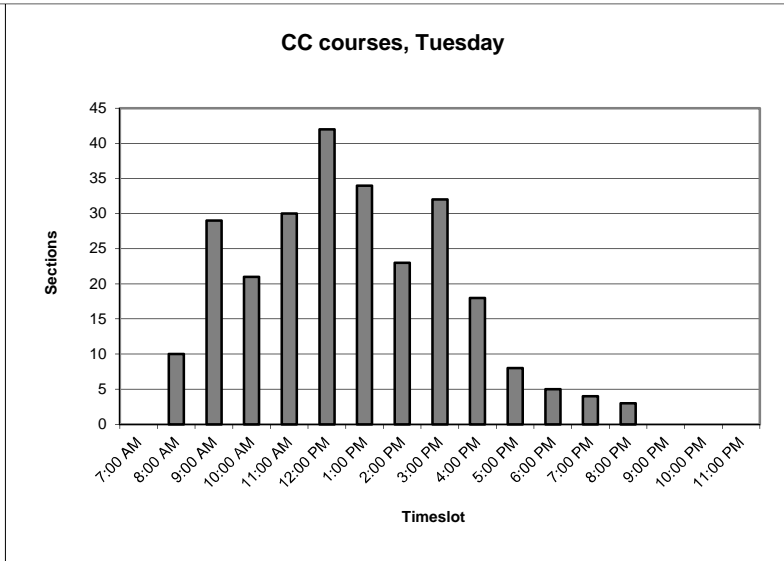
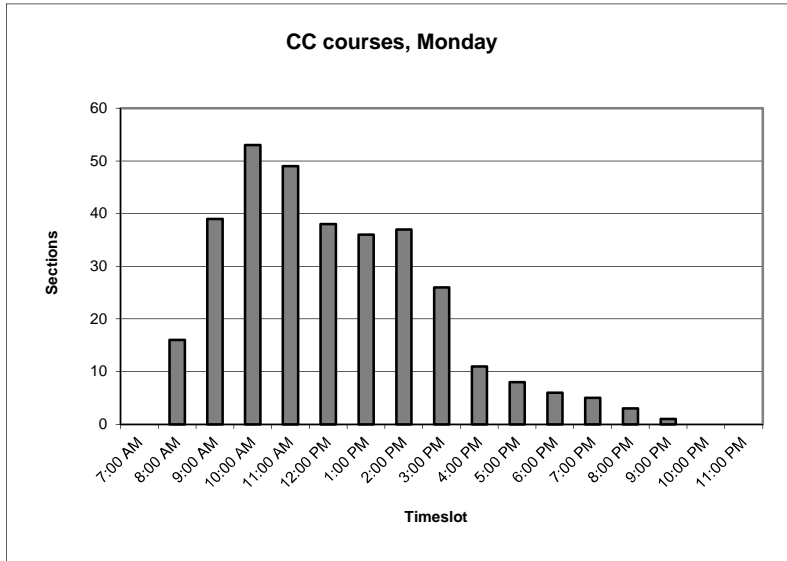
Courses are all courses explicitly listed as Core Curriculum courses in the current Shepherd catalog. The Core Curriculum requirements in Writing in the Major and Capstone in the Major are not included here.

"Time" indicates the timeslot in which the class is running. For example, "10:00 AM" courses are those courses that are in session from 10:00 AM to 10:59 AM. These courses may start at some point during that hour, or may have started earlier and still be in session for part or all of that hour.

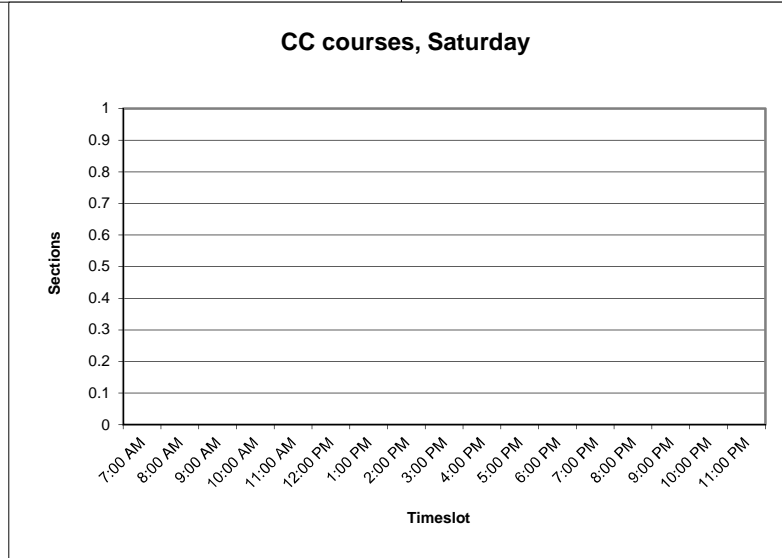
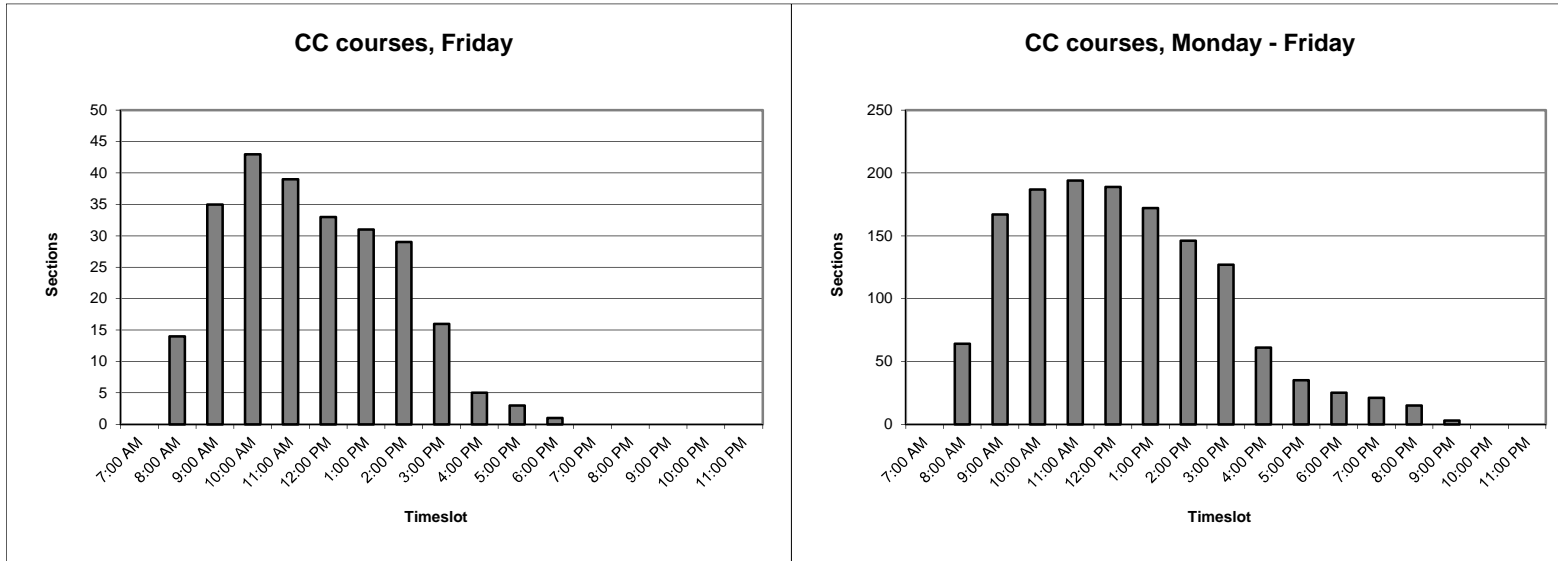
"% tot" is the percentage of the column total. In the "Total" line, percentages are computed based upon the line total (excepting Saturdays).

Courses with no scheduled times in Banner ("TBA") are not included here. In Fall 2018, there were 27 of these.

**Graphs 16A. Core Curriculum courses by time of day, Monday - Thursday**



**Graphs 16B. Core Curriculum courses by time of day, Friday, weekdays and Saturday**

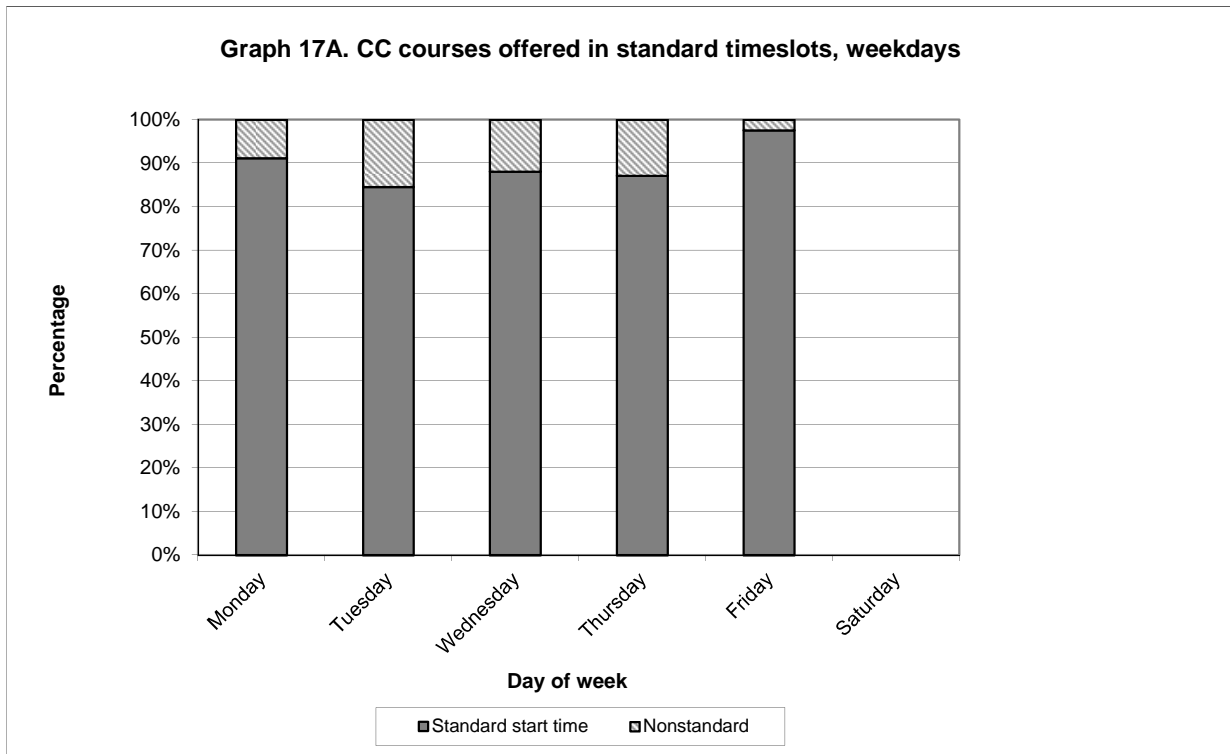


**Table 17. Core Curriculum courses offered in standard timeslots, weekdays**

Standard start time	Monday		Tuesday		Wednesday		Thursday		Friday		Saturday		Overall	
	N	%	N	%	N	%	N	%	N	%	N	%	N	%
Nonstandard	14	8.9%	17	15.5%	19	11.9%	13	12.9%	3	2.4%	0	N/A	66	10.1%
Standard	144	91.1%	93	84.5%	140	88.1%	88	87.1%	121	97.6%	0	N/A	586	89.9%
<b>Total</b>	<b>158</b>	<b>100.0%</b>	<b>110</b>	<b>100.0%</b>	<b>159</b>	<b>100.0%</b>	<b>101</b>	<b>100.0%</b>	<b>124</b>	<b>100.0%</b>	<b>0</b>	<b>N/A</b>	<b>652</b>	<b>100.0%</b>

Data derive from census-date Banner data.

"Standard" start times are those listed in the Fall semester course catalog with defined final exam schedules. These are:  
 MWF: 8:10 AM, 9:10 AM, 10:10 AM, 11:10 AM, 12:10 PM, 1:10 PM, 2:10 PM, 3:10 PM.  
 TR: 8:10 AM, 9:35 AM, 11:00 AM, 12:25 PM, 1:50 PM, 3:15 PM.



**Table 18. Online and hybrid courses, Fall 2014 - Fall 2018**

	Fall 2014		Fall 2015		Fall 2016		Fall 2017		Fall 2018		Total		Average	
	N	% all	N	% all	N	% all	N	% all	N	% all	N	% all	N	% all
Hybrid	5	0.4%	6	0.5%	3	0.3%	7	0.6%	6	0.5%	27	0.5%	5	0.5%
Online	29	2.5%	38	3.4%	64	5.7%	74	6.7%	101	9.2%	306	5.5%	61.2	5.5%
All courses	1140		1119		1130		1103		1099		5591		1118.2	

All data derive from HEPC census-date data submissions.

"Hybrid" courses are courses with more than 50% online delivery.

"Online" courses are those courses taught entirely online.

"Courses" are sections which receive a unique CRN from the Registrar.

"% all" is the percentage of all courses taught that semester represented by the line. For example, for Fall 2018, the 101 online courses represent 9.2% of the total of 1099 courses taught that semester.

The HEPC data from which these numbers derive allows for four categories of online courses:

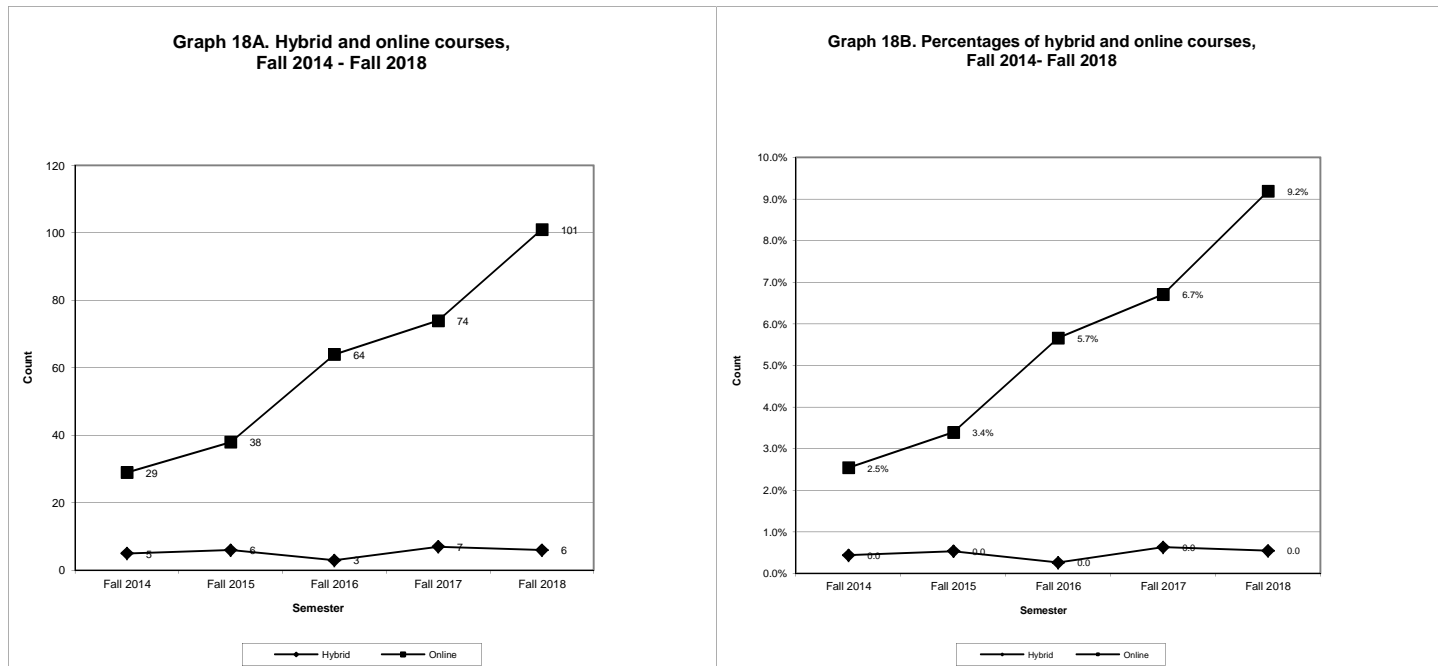
100% non-traditional delivery (labeled as "Online" here)

50% - 74% non-traditional delivery (labeled as "Hybrid" here)

75% - 99% non-traditional delivery (labeled as "Hybrid" here)

Less than 50% non-traditional delivery (included in "All courses", but not listed separately here)

"Non-traditional delivery" can include electronic or analog delivery (e.g., correspondence courses, satellite courses), but in practice usually indicates online delivery.



**Table 19. Students Enrolled in Graduate Programs**

Program	Fall 2014		Fall 2015		Fall 2016		Fall 2017		Fall 2018		Fall 2014-18	
	FTE	HC	FTE	HC	FTE	HC	FTE	HC	FTE	HC	Mean FTE	Change in FTE
Business Administration	52.83	78	41.00	65	50.25	82	54.75	89	42.00	64	48.17	-10.83
Curriculum and Instruction	10.75	26	7.50	22	7.75	18	5.83	14	4.25	9	7.22	-6.50
Data Analytics									4.25	6	4.25	4.25
Music Education	3.00	10	2.00	5	0.00	0	0	0	0.00	0	1.00	-3.00
Student Development and Administration	21.00	34	17.83	27	17.00	26	19.25	28	17.00	27	18.42	-4.00
Teaching	27.25	36	17.08	26	17.83	25	17.75	26	15.17	23	19.02	-12.08
DNP	N/A	N/A	12.17	15	15.92	22	19.42	25	14.92	18	15.61	N/A
<b>Shepherd University</b>	<b>114.83</b>	<b>184</b>	<b>85.41</b>	<b>145</b>	<b>107.67</b>	<b>172</b>	<b>117</b>	<b>182</b>	<b>97.59</b>	<b>147</b>	<b>104.50</b>	<b>-17.24</b>

**General Explanation / Definitions.**

1. The student **FTE** (full-time equivalent) equals 12 credit hours.
2. The **HC** is the headcount of students enrolled in and taking courses in the degree program.
3. The **mean FTE** is the average FTE for the years shown.
4. The **change in FTE** is the change in the FTE from the current year to the earliest year shown.
5. Each student is counted once in each program in which s/he is enrolled. Students enrolled in multiple programs are thus counted more than once. FTE and HC totals, however, are nonduplicated - each student is counted once regardless of the number of programs s/he is enrolled in. Thus, HC and FTE totals may not match totals across the individual programs.

**Table 20. Graduates from Graduate Programs**

Program	2013-14	2014-15	2015-16	2016-17	2017-18	Mean N	Change
Business Administration	35	40	17	24	33	29.8	-2
Curriculum and Instruction	4	4	9	10	4	6.2	0
Music Education	0	3	3	4	0	2.0	0
Student Development and Administration	13	19	11	14	8	13.0	-5
Teaching	12	11	15	14	7	11.8	-5
DNP			0	0	9	3	9
<b>Shepherd University</b>	<b>64</b>	<b>77</b>	<b>55</b>	<b>66</b>	<b>61</b>	<b>64.6</b>	<b>-3</b>

Numbers of graduates are computed using the fall, spring, and following summer of the stated year.

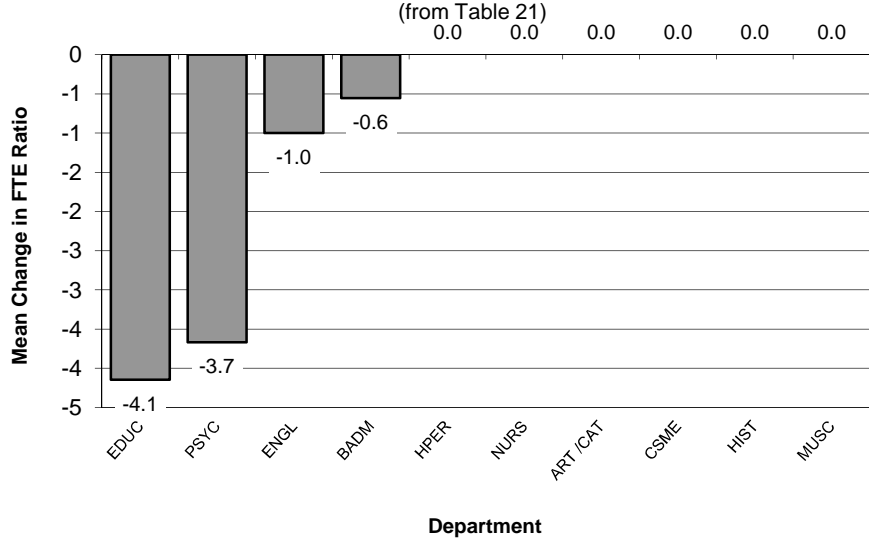
**Table 21. Graduate Student to Faculty FTE Ratios**

Department	Fall 2014			Fall 2015			Fall 2016			Fall 2017				Fall 2018				Fall 2014-18	
	F-FTE	S-FTE	Ratio	F-FTE	S-FTE	Ratio	F-FTE	S-FTE	Ratio	F-FTE	S-FTE	Ratio	Change	F-FTE	S-FTE	Ratio	Change	Mean Ratio	Change in Ratio
CAT	0.25	0.25	1.00	0.25	0.25	1.00	0.50	0.75	1.50	0.25	0.25	1.00	-0.50	0.00	0.00	N/A	N/A	1.13	N/A
BADM	5.48	54.00	9.85	5.50	42.75	7.77	6.56	52.75	8.04	5.23	57.50	10.99	2.95	5.00	46.50	9.30	-1.69	9.19	-0.55
CSME	0.00	0.00	N/A	0.00	0.00	N/A	0.00	0.00	N/A	0.50	1.25	2.50	N/A	1.25	4.25	3.40	0.90	2.95	N/A
EDUC	4.25	33.25	7.82	5.00	22.00	4.40	4.50	21.50	4.78	4.25	17.50	4.12	-0.66	4.33	15.92	3.68	-0.44	4.96	-4.15
ENGL	0.25	0.50	2.00	0.00	0.00	N/A	0.42	1.67	3.98	1.00	1.75	1.75	-2.23	0.75	0.75	1.00	-0.75	2.18	-1.00
HIST	0.00	0.00	N/A	0.00	0.00	N/A	0.00	0.00	N/A	0.50	0.50	1.00	N/A	0.00	0.00	N/A	N/A	1.00	N/A
HPER	0.00	0.00	N/A	0.00	0.00	N/A	0.00	0.00	N/A	0.25	0.25	1.00	N/A	0.00	0.00	N/A	N/A	1.00	N/A
MUSC	0.67	2.50	3.73	0.50	1.00	2.00	0.00	0.00	N/A	0.00	0.00	N/A	N/A	0.00	0.00	N/A	N/A	2.87	N/A
NURS	0.00	0.00	N/A	1.08	11.42	10.57	1.50	15.67	10.45	2.92	19.67	6.74	-3.71	3.17	14.67	4.63	-2.11	8.10	N/A
PSYC	1.50	21.00	14.00	1.50	16.00	10.67	1.50	18.00	12.00	1.50	19.75	13.17	1.17	1.50	15.50	10.33	-2.83	12.03	-3.67
<b>Shepherd University</b>	<b>12.40</b>	<b>111.50</b>	<b>8.99</b>	<b>13.83</b>	<b>93.42</b>	<b>6.75</b>	<b>14.98</b>	<b>110.34</b>	<b>7.37</b>	<b>16.40</b>	<b>118.42</b>	<b>7.22</b>	<b>0.47</b>	<b>16.00</b>	<b>97.59</b>	<b>6.10</b>	<b>-1.12</b>	<b>7.29</b>	<b>-2.89</b>

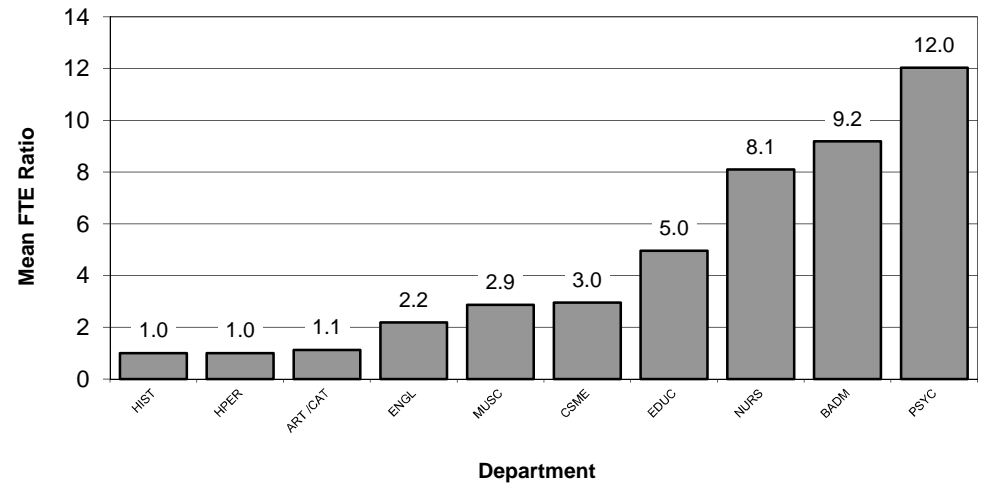
**General Explanation/Definitions.**

1. The **ratio** is obtained by dividing the student FTE by the faculty FTE.
2. One faculty **FTE** (full-time equivalent) equals 12 hours of instructional responsibility and one student FTE equals 12 credit hours. The ratio is the student FTE divided by the faculty FTE.
3. The annual **change** is the current year's ratio minus the prior year's ratio.
4. The **mean ratio** is the sum of the annual ratios divided by the number of years for which data exist.
5. The **change in ratio** is the current year's ratio minus the first year's ratio.
6. Numbers are for paid courses only.

**Graph 21A: Mean Change in FTE Ratios (Student FTE: Faculty FTE) for Graduate Courses, 2014-2018**



**Graph 21B: Mean FTE Ratios (Student FTE: Faculty FTE) for Graduate Courses, 2014-2018**



Except for Tables 22 and 29-31, all tables are for undergraduate degree-seeking students only and the census date (10/15/18) HEPC Student file is the source of data. Only credit-earning students are counted unless noted otherwise.

**Table 22. Degree Targets**

	Bacc	None	Master's	DNP	Total
4-Year	2821	755	129	18	3723

(Includes noncredit students)

**Table 23. ACT and ACT Equivalent Scores by Residency**

	ACT		ACT Equivalent		Total	
	N	Mean	N	Mean	N	Mean
Eastern Panhandle	954	21.4	168	21.8	1122	21.4
<i>Berkeley</i>	579	21.2	76	21.4	655	21.2
<i>Jefferson</i>	328	21.8	89	22.0	417	21.8
<i>Morgan</i>	47	20.8	3	25.7	50	21.1
Other WV counties	186	23.0	0	N/A	186	23.0
MD	78	21.0	164	21.6	242	21.4
VA	47	20.9	68	21.4	115	21.2
PA	8	22.1	21	22.1	29	22.1
Other US states	20	19.9	15	20.1	35	20.0
International	2	18.0	3	20.3	5	19.4
<b>Total</b>	<b>1295</b>	<b>21.6</b>	<b>439</b>	<b>21.6</b>	<b>1734</b>	<b>21.6</b>

National ACT scores, class of 2018:

Mean 20.8

WV ACT scores, class of 2018:

Mean 20.3

Note: Some students submitted both ACT and SAT scores at the time of admission. Students doing so chose one or the other as the preferred score type; only those scores are used for these tables. Some students submitted neither score.



**Table 24. Status by Residency, Five-Year Trends**

	Full-Time											
	Fall 2014		Fall 2015		Fall 2016		Fall 2017		Fall 2018		Total	
	N	%	N	%	N	%	N	%	N	%	N	%
Eastern Panhandle	1631	46.7%	1550	46.7%	1472	47.6%	1487	50.3%	1445	51.3%	7585	48.4%
<i>Berkeley</i>	920	26.4%	902	27.2%	850	27.5%	865	29.3%	820	29.1%	4357	27.8%
<i>Jefferson</i>	633	18.1%	581	17.5%	551	17.8%	563	19.0%	566	20.1%	2894	18.5%
<i>Morgan</i>	78	2.2%	67	2.0%	71	2.3%	59	2.0%	59	2.1%	334	2.1%
Other WV counties	255	7.3%	251	7.6%	231	7.5%	217	7.3%	221	7.8%	1175	7.5%
MD	745	21.4%	718	21.6%	631	20.4%	555	18.8%	532	18.9%	3181	20.3%
VA	300	8.6%	263	7.9%	228	7.4%	217	7.3%	206	7.3%	1214	7.7%
PA	56	1.6%	61	1.8%	60	1.9%	54	1.8%	58	2.1%	289	1.8%
Other US states	89	2.6%	81	2.4%	66	2.1%	62	2.1%	58	2.1%	356	2.3%
International	14	0.4%	10	0.3%	9	0.3%	19	0.6%	22	0.8%	74	0.5%
<b>Total</b>	<b>3090</b>	<b>88.6%</b>	<b>2934</b>	<b>88.4%</b>	<b>2697</b>	<b>87.2%</b>	<b>2611</b>	<b>88.3%</b>	<b>2542</b>	<b>90.2%</b>	<b>13874</b>	<b>88.5%</b>

	Part-Time											
	Fall 2014		Fall 2015		Fall 2016		Fall 2017		Fall 2018		Total	
	N	%	N	%	N	%	N	%	N	%	N	%
Eastern Panhandle	279	8.0%	282	8.5%	277	9.0%	239	8.1%	198	7.0%	1275	8.1%
<i>Berkeley</i>	150	4.3%	164	4.9%	166	5.4%	157	5.3%	122	4.3%	759	4.8%
<i>Jefferson</i>	119	3.4%	107	3.2%	103	3.3%	74	2.5%	69	2.4%	472	3.0%
<i>Morgan</i>	10	0.3%	11	0.3%	8	0.3%	8	0.3%	7	0.2%	44	0.3%
Other WV counties	14	0.4%	14	0.4%	12	0.4%	14	0.5%	8	0.3%	62	0.4%
MD	52	1.5%	49	1.5%	69	2.2%	66	2.2%	33	1.2%	269	1.7%
VA	37	1.1%	34	1.0%	27	0.9%	18	0.6%	29	1.0%	145	0.9%
PA	10	0.3%	4	0.1%	3	0.1%	1	0.0%	3	0.1%	21	0.1%
Other US states	6	0.2%	3	0.1%	7	0.2%	4	0.1%	3	0.1%	23	0.1%
International	1	0.0%	0	0.0%	2	0.1%	3	0.1%	1	0.0%	7	0.0%
<b>Total</b>	<b>399</b>	<b>11.4%</b>	<b>386</b>	<b>11.6%</b>	<b>397</b>	<b>12.8%</b>	<b>345</b>	<b>11.7%</b>	<b>275</b>	<b>9.8%</b>	<b>1802</b>	<b>11.5%</b>

	Total											
	Fall 2014		Fall 2015		Fall 2016		Fall 2017		Fall 2018		Total	
	N	%	N	%	N	%	N	%	N	%	N	%
Eastern Panhandle	1910	54.7%	1832	55.2%	1749	56.5%	1726	58.4%	1643	58.3%	8860	56.5%
<i>Berkeley</i>	1070	30.7%	1066	32.1%	1016	32.8%	1022	34.6%	942	33.4%	5116	32.6%
<i>Jefferson</i>	752	21.6%	688	20.7%	654	21.1%	637	21.5%	635	22.5%	3366	21.5%
<i>Morgan</i>	88	2.5%	78	2.3%	79	2.6%	67	2.3%	66	2.3%	378	2.4%
Other WV counties	269	7.7%	265	8.0%	243	7.9%	231	7.8%	229	8.1%	1237	7.9%
MD	797	22.8%	767	23.1%	700	22.6%	621	21.0%	565	20.1%	3450	22.0%
VA	337	9.7%	297	8.9%	255	8.2%	235	7.9%	235	8.3%	1359	8.7%
PA	66	1.9%	65	2.0%	63	2.0%	55	1.9%	61	2.2%	310	2.0%
Other US states	95	2.7%	84	2.5%	73	2.4%	66	2.2%	61	2.2%	379	2.4%
International	15	0.4%	10	0.3%	11	0.4%	22	0.7%	23	0.8%	81	0.5%
<b>Total</b>	<b>3489</b>	<b>100.0%</b>	<b>3320</b>	<b>100.0%</b>	<b>3094</b>	<b>100.0%</b>	<b>2956</b>	<b>100.0%</b>	<b>2817</b>	<b>100.0%</b>	<b>15676</b>	<b>100.0%</b>

All percentages for each year are computed based upon the total students for each year. For example, for Fall 2018, the 1445 full-time students in the Eastern Panhandle are 51.3% of the total number of students in Fall 2018 (2817). Tables include undergraduate degree-seeking credit students only.

**Table 25. ACT and ACT Equivalent Scores by Residency**

	ACT or ACT Equivalent										Total	Mean
	16 or lower	17	18	19	20	21	22	23-25	26-30	31 or higher	N	
WV	71	96	93	130	128	138	129	340	162	21	1308	21.7
MD	15	24	22	33	23	16	27	42	36	4	242	21.4
VA	5	6	18	21	7	11	6	28	12	1	115	21.2
PA	0	2	2	3	3	4	2	9	4	0	29	22.1
Other US states	2	5	5	7	4	2	3	5	2	0	35	20.0
International	1	1	0	1	0	0	0	2	0	0	5	19.4
<b>Total</b>	<b>94</b>	<b>134</b>	<b>140</b>	<b>195</b>	<b>165</b>	<b>171</b>	<b>167</b>	<b>426</b>	<b>216</b>	<b>26</b>	<b>1734</b>	<b>21.6</b>

Note: Some students submitted both ACT and SAT scores at the time of admission. Students doing so chose one or the other as the preferred score type; only those scores are used for these tables. Some students submitted neither score.

**Table 26. Class Level by Residency**

	Freshmen		Sophomore		Junior		Senior		Unclassified		Total	
	N	Percent	N	Percent	N	Percent	N	Percent	N	Percent	N	Percent
Panhandle	442	15.7%	337	12.0%	355	12.6%	500	17.7%	9	0.3%	1643	58.3%
<i>Berkeley</i>	242	8.6%	185	6.6%	211	7.5%	300	10.6%	4	0.1%	942	33.4%
<i>Jefferson</i>	183	6.5%	141	5.0%	126	4.5%	181	6.4%	4	0.1%	635	22.5%
<i>Morgan</i>	17	0.6%	11	0.4%	18	0.6%	19	0.7%	1	0.0%	66	2.3%
Other WV counties	65	2.3%	55	2.0%	51	1.8%	58	2.1%	0	0.0%	229	8.1%
MD	148	5.3%	93	3.3%	130	4.6%	194	6.9%	0	0.0%	565	20.1%
VA	66	2.3%	36	1.3%	49	1.7%	83	2.9%	1	0.0%	235	8.3%
PA	20	0.7%	10	0.4%	13	0.5%	17	0.6%	1	0.0%	61	2.2%
Other US states	19	0.7%	13	0.5%	14	0.5%	15	0.5%	0	0.0%	61	2.2%
International	8	0.3%	2	0.1%	8	0.3%	5	0.2%	0	0.0%	23	0.8%
<b>Total</b>	<b>768</b>	<b>27.3%</b>	<b>546</b>	<b>19.4%</b>	<b>620</b>	<b>22.0%</b>	<b>872</b>	<b>31.0%</b>	<b>11</b>	<b>0.4%</b>	<b>2817</b>	<b>100.0%</b>

**Table 27. Retention of Fall 2017  
Freshman Cohort by Residency**

	Freshmen	Returned	Percent
Eastern Panhandle	354	245	69.2%
<i>Berkeley</i>	210	144	68.6%
<i>Jefferson</i>	136	94	69.1%
<i>Morgan</i>	8	7	87.5%
Other WV counties	53	41	77.4%
MD	113	82	72.6%
VA	39	27	69.2%
PA	12	5	41.7%
Other US states	14	6	42.9%
International	5	1	20.0%
<b>Total</b>	<b>590</b>	<b>407</b>	<b>69.0%</b>

Full-time first-time-in-college freshmen who enrolled in Fall 2017 and were still enrolled as of Fall 2018. Students who withdrew after enrolling this semester are included.

**Table 28. Graduation of Fall 2012  
Freshman Cohort by Residency**

	Bacc. grads	Percent
Eastern Panhandle	178	49.4%
<i>Berkeley</i>	104	28.9%
<i>Jefferson</i>	70	19.4%
<i>Morgan</i>	4	1.1%
Other WV counties	37	10.3%
MD	86	23.9%
VA	37	10.3%
PA	6	1.7%
Other US states	15	4.2%
International	1	N/A
<b>Total</b>	<b>360</b>	<b>100.0%</b>

In Fall 2012, 747 entering full-time, first-time-in-college freshmen declared that they were seeking baccalaureate degrees. From this group, 360 students (48.2%) were awarded baccalaureate degrees by August 2018.

**Table 29. Student Headcount by Registration Type**

Type	Fall 2014		Fall 2015		Fall 2016		Fall 2017		Fall 2018		Change 2014-18	
	Head	Percent	Head	Percent	Head	Percent	Head	Percent	Head	Percent	N	Percent
Returning	2602	64.4%	2364	61.2%	2221	58.8%	2083	55.8%	2006	55.0%	-596	-22.9%
New Freshmen	642	15.9%	638	16.5%	564	14.9%	598	16.0%	593	16.3%	-49	-7.6%
Readmitted	43	1.1%	44	1.1%	51	1.3%	25	0.7%	35	1.0%	-8	-18.6%
Transient/Special	356	8.8%	361	9.3%	495	13.1%	532	14.2%	590	16.2%	234	65.7%
High School	13	0.3%	21	0.5%	15	0.4%	64	1.7%	94	2.6%	81	623.1%
Transfer	322	8.0%	370	9.6%	362	9.6%	359	9.6%	286	7.8%	-36	-11.2%
First Time Master's	63	1.6%	48	1.2%	58	1.5%	64	1.7%	35	1.0%	-28	-44.4%
First Time Doctoral		0.0%	15	0.4%	13	0.3%	11	0.3%	9	0.2%	9	N/A
<b>Total</b>	<b>4041</b>	<b>100.0%</b>	<b>3861</b>	<b>100.0%</b>	<b>3779</b>	<b>100.0%</b>	<b>3736</b>	<b>100.0%</b>	<b>3648</b>	<b>100.0%</b>	<b>-393</b>	<b>-9.7%</b>

1

**Table 30. Student FTE by Registration Type**

Registration Type	Fall 2014		Fall 2015		Fall 2016		Fall 2017		Fall 2018		Change 2014-18	
	FTE	Percent	Head	Percent	Head	Percent	Head	Percent	Head	Percent	N	Percent
Returning	2395	69.3%	2181	66.5%	2029	65.6%	1906	63.5%	1873	63.9%	-522	-21.8%
New Freshmen	639	18.5%	645	19.6%	566	18.3%	600	20.0%	604	20.6%	-35	-5.5%
Readmitted	30	0.9%	23	0.7%	33	1.1%	16	0.5%	24	0.8%	-5	-17.9%
Transient/Special	71	2.1%	73	2.2%	106	3.4%	109	3.6%	121	4.1%	49	69.5%
High School	3	0.1%	5	0.1%	3	0.1%	17	0.6%	28	1.0%	25	832.3%
Transfer	276	8.0%	313	9.5%	307	9.9%	303	10.1%	250	8.5%	-26	-9.4%
First Time Master's	44	1.3%	31	0.9%	39	1.3%	43	1.4%	25	0.8%	-19	-43.5%
First Time Doctoral		0.0%	12	0.4%	10	0.3%	9	0.3%	8	0.3%	8	N/A
<b>Total</b>	<b>3458</b>	<b>100.0%</b>	<b>3282</b>	<b>100.0%</b>	<b>3094</b>	<b>100.0%</b>	<b>3002</b>	<b>100.0%</b>	<b>2933</b>	<b>100.0%</b>	<b>-525</b>	<b>-15.2%</b>

**Table 31. Student Headcount by Race and Ethnicity**

Race / ethnicity	Fall 2014		Fall 2015		Fall 2016		Fall 2017		Fall 2018		Change 2014-18	
	Head	Percent	Head	Percent	Head	Percent	Head	Percent	Head	Percent	N	Percent
Hispanic	116	2.9%	107	2.8%	126	3.3%	156	4.2%	204	5.6%	88	75.9%
Am Ind/Alaskan	26	0.6%	21	0.5%	23	0.6%	18	0.5%	25	0.7%	-1	-3.8%
Black	324	8.0%	342	8.9%	306	8.1%	296	7.9%	278	7.6%	-46	-14.2%
White	3394	84.0%	3177	82.3%	3101	82.1%	3000	80.3%	2835	77.7%	-559	-16.5%
Asian	74	1.8%	94	2.4%	75	2.0%	72	1.9%	68	1.9%	-6	-8.1%
Nat HI / OPI	3	0.1%	3	0.1%	2	0.1%	4	0.1%	15	0.4%	12	400.0%
Two or more	35	0.9%	63	1.6%	68	1.8%	100	2.7%	118	3.2%	83	237.1%
Unknown	69	1.7%	54	1.4%	78	2.1%	90	2.4%	105	2.9%	36	52.2%
<b>Total</b>	<b>4041</b>	<b>100.0%</b>	<b>3861</b>	<b>100.0%</b>	<b>3779</b>	<b>100.0%</b>	<b>3736</b>	<b>100.0%</b>	<b>3648</b>	<b>100.0%</b>	<b>-481</b>	<b>-9.7%</b>

Sources for these tables are census date HEPC files.  
Data are for credit students only.

**Table 32. Shepherd University FTE by Department and Instructor**

Dept	L_name	F_name	Faculty UG FTE	Student UG FTE	UG S/F Ratio	Faculty G FTE	Student G FTE	G S/F Ratio
0000	ALEXANDER	KEITH	.25	2.40	9.60	.	.	.
	ANDERSON	SCOTT	.08	.67	8.00	.	.	.
	BRASHER	SALLY	.25	3.40	13.60	.	.	.
	CANTRELL	MARK	.25	2.80	11.20	.	.	.
	COPNEY	CYNTHIA	.08	1.07	12.80	.	.	.
	ELLZEY	MARY	.25	3.40	13.60	.	.	.
	FRANKS	JULIA	.08	.93	11.20	.	.	.
	GROSS	EMILY	.17	1.70	10.20	.	.	.
	HOLLIDAY	SHANNON	.17	2.20	13.20	.	.	.
	KRANTZ	RACHEL	.08	1.00	12.00	.	.	.
	MARKEY	MELISSA	.08	1.00	12.00	.	.	.
	MEADS	RACHAEL	.08	1.27	15.20	.	.	.
	NIXON	TIMOTHY	.25	2.40	9.60	.	.	.
	NUREDINOSKI	YILDIZ	.08	.60	7.20	.	.	.
	REICH	CHRISTINA	.08	1.00	12.00	.	.	.
	RICKETTS	MICHELLE	.17	1.63	9.80	.	.	.
	ROWE	TAJMARIE	.08	1.33	16.00	.	.	.
	SANDY	JULIA	.25	2.80	11.20	.	.	.
	SANTANA	BRIAN	.08	1.60	19.20	.	.	.
	SEFFERS	TRACY	.08	.47	5.60	.	.	.
	SHAFFER	STEVEN	.08	1.27	15.20	.	.	.
	SKOWRONSKI	MARIA	.08	.07	.80	.	.	.
	STAR	YIN	.08	1.27	15.20	.	.	.
	WILLIAMS-MCNAME	HANNAH	.08	1.13	13.60	.	.	.
	WILSON	CHRISTOPHER	.17	3.07	18.40	.	.	.
Subtotal dept			3.42	40.47		.	.	
ACCT	FILES	MICHELLE	.75	9.60	14.00	.	.	.
	HAMOOD	ROGER	.75	11.40	13.80	.	.	.
	SLOUGH	JOHN	.25	5.00	20.00	.	.	.
	VANCE	CYNTHIA	1.00	17.40	18.53	.	.	.
Subtotal dept			2.75	43.40		.	.	
BADM	AYTAC	BERRIN	.	.	.	.75	7.00	9.33

Fall 2018: SU FTEs by Department

Dept	L_name	F_name	Faculty UG FTE	Student UG FTE	UG S/F Ratio	Faculty G FTE	Student G FTE	G S/F Ratio
	BARNETT	ANDRO	.	.	.	.25	1.50	6.00
	BUTLER	RANDOLPH	.	.	.	.50	7.00	14.00
	DAILEY	MICHAEL	.75	9.80	13.07	.	.	.
	DIXON	MICHAEL	.50	9.20	18.40	.25	5.00	20.00
	FILES	MICHELE	.	.	.	.25	1.25	5.00
	FLORA	JENNIFER	.50	6.80	13.60	.	.	.
	FRYE	HOLLY	.25	3.40	13.60	.	.	.
	GOCMEN	TUNCER	.	.	.	.50	4.50	9.00
	GOOLSBY	CAROL	1.00	18.40	16.80	.	.	.
	GROSS	DAVID	.75	14.80	19.73	.	.	.
	GROVES	MICHAEL	.	.	.	.25	2.00	8.00
	HILLMAN	DONALD	.50	10.00	20.00	.25	1.75	7.00
	ISHERWOOD	ALEX	.	.	.	.50	3.50	7.00
	LARSON	LINDSEY	.50	9.20	18.40	.	.	.
	LEGGETT	LANA	.	.	.	.25	3.75	15.00
	LYNCH	MICHAEL	.75	9.20	12.27	.25	2.75	11.00
	MARTZ	WILLIAM	.	.	.	.25	1.50	6.00
	REID	KATHLEEN	.25	12.20	48.80	.	.	.
	SANDSTROM	DIRK	.	.	.	.50	3.50	7.00
	SCALES	CINDA	.75	9.80	13.07	.	.	.
	SCOTT	JANINE	1.00	15.40	15.40	.	.	.
	SHERWOOD	PATRICIA	.25	1.00	4.00	.	.	.
	TOUHIDI	BEHZAD	.50	5.80	11.60	.	.	.
	VANCE	CYNTHIA	.	.	.	.25	1.50	6.00
	WEST	JIMMIE	.50	6.00	12.00	.	.	.
	YORK	JUDY	.25	3.60	14.40	.	.	.
	Subtotal dept		9.00	144.60		5.00	46.50	
BIOL	AMSBERRY	LINDSAY	.67	11.47	17.20	.	.	.
	ANDERSEN	ELLEN	.33	5.87	17.60	.	.	.
	CONLEY	RUTH	1.39	14.80	10.83	.	.	.
	DOMENICK	MARIA	.33	1.07	3.20	.	.	.
	GILKERSON	JONATHAN	1.17	17.60	14.60	.	.	.
	HENDRICKSON-LAM	SHER	.67	12.53	18.80	.	.	.
	MCKENNA	KERRY	.67	12.00	18.00	.	.	.

Fall 2018: SU FTEs by Department

Dept	L_name	F_name	Faculty UG FTE	Student UG FTE	UG S/F Ratio	Faculty G FTE	Student G FTE	G S/F Ratio
	MENKE	JAY	1.17	31.53	27.03	.	.	.
	NOLAN	COLLEEN	1.00	14.93	14.93	.	.	.
	PENNOCK	DAVID	.67	10.67	16.00	.	.	.
	PLAUTZ	CAROL	1.21	13.80	14.08	.	.	.
	ROBERTSON	LAURA	1.33	17.60	13.60	.	.	.
	STEFFEN	JOHN	1.00	16.00	16.00	.	.	.
	WARD	MARY	.33	5.87	17.60	.	.	.
	WING	DAVID	.92	8.67	9.45	.	.	.
Subtotal dept			12.85	194.40		.	.	
CAT	BENEFIEL	CHRISTIAN	.71	7.80	9.40	.	.	.
	BOGGESS	EVAN	.75	8.60	11.47	.	.	.
	BRUNER	RICK	.25	3.20	12.80	.	.	.
	COHEN-REISMAN	PAUL	.50	5.20	10.40	.	.	.
	COLTRIN	CHRISTOPHER	1.00	16.40	14.13	.	.	.
	CRAIG	JAMES	.75	19.80	26.40	.	.	.
	DAY	NICHOLAS	.25	1.60	6.40	.	.	.
	EVANISKO	SONYA	1.00	8.20	10.27	.	.	.
	FARMER	ROBERT	.75	8.00	11.20	.	.	.
	HAMANN	BRADFORD	1.00	14.40	14.40	.	.	.
	HERENDEEN	EDWARD	.33	.27	.80	.	.	.
	KAINEG	KRISTIN	1.25	12.80	12.10	.	.	.
	KUGLER	TRENT	.25	.40	1.60	.	.	.
	MENDEZ	MICHAEL	.75	15.40	20.53	.	.	.
	MODLER	DAVID	.75	6.00	8.40	.	.	.
	NEVE	ERIN	1.23	11.20	8.35	.	.	.
	SMITH	RHONDA	.73	10.40	13.83	.	.	.
	WELTI	STEVEN	.25	2.00	8.00	.	.	.
Subtotal dept			12.51	151.67		.	.	
CHEM	BOZENKO	JOSEPH	.25	1.20	4.80	.	.	.
	COLE	JACQUELYN	1.00	16.40	16.40	.	.	.
	DILELLA	DAN	.89	11.60	14.51	.	.	.
	HASSLER	KYLE	1.25	17.53	14.03	.	.	.
	KEARNEY	BRIAN	.08	1.07	12.80	.	.	.
	LI	MENGYANG	1.00	17.53	17.53	.	.	.

Fall 2018: SU FTEs by Department

Dept	L_name	F_name	Faculty UG FTE	Student UG FTE	UG S/F Ratio	Faculty G FTE	Student G FTE	G S/F Ratio
	MADER	JORDAN	1.00	17.60	17.60	.	.	.
	WARBURTON	ROBERT	.42	6.53	15.68	.	.	.
Subtotal dept			5.89	89.47		.	.	
COMM	BLACK	THOMAS	.50	7.80	15.60	.	.	.
	CAMPBELL	TODD	.75	10.80	13.00	.	.	.
	FRIDGEN	PATRICIA	.50	7.40	14.80	.	.	.
	KUSHIN	MATTHEW	1.00	15.00	15.33	.	.	.
	LEVINE	MONICA	1.00	11.73	11.73	.	.	.
	MASON	CECELIA	.25	2.60	10.40	.	.	.
	MCKAHAN	JASON	.98	10.40	10.59	.	.	.
	MESSERLI	SHERRI	.75	11.20	14.93	.	.	.
	REILLY	CHERYL	.50	8.40	16.80	.	.	.
	WILLIAMS	KEVIN	1.00	11.80	11.60	.	.	.
Subtotal dept			7.23	97.13		.	.	
CSME	ADAMS	KAREN	.92	18.67	20.00	.	.	.
	BAILEY	WILLIAM	.58	11.67	20.00	.	.	.
	CELIK	ISMAIL	.25	6.20	24.80	.	.	.
	DESTEFANO	DAVID	.25	1.80	7.20	.	.	.
	GEESAMAN	MARY	.50	7.20	14.40	.	.	.
	GHAHREMANI	MOHAMMADREZA	.67	3.87	5.80	.	.	.
	GIL-ZAMBRANO	JOSE	.75	12.60	16.80	.	.	.
	GRANT	KAREN	.25	3.00	12.00	.	.	.
	GUZIDE	OSMAN	1.08	15.87	14.00	.	.	.
	HASSO	SARGON	1.08	12.60	11.63	.50	2.00	4.00
	HULSE	JONATHAN	.67	14.13	21.20	.	.	.
	LIAO	WEIDONG	1.08	16.40	15.14	.25	1.00	4.00
	MARTIN	NICHOLAS	1.00	10.80	10.80	.	.	.
	MILLER	JASON	.99	18.00	19.32	.	.	.
	MILLS	DONALD	1.25	17.27	15.21	.	.	.
	MIRDAMADI	REZA	.83	10.93	10.74	.	.	.
	MORTENSEN	YOONJA	.75	20.80	27.73	.	.	.
	NELLES	FRANCOISE	1.33	29.73	22.30	.	.	.
	RAY	JEFFREY	.25	2.80	11.20	.25	1.00	4.00
	RAY	GEORGE	.75	17.40	24.20	.25	.25	1.00



Fall 2018: SU FTEs by Department

Dept	L_name	F_name	Faculty UG FTE	Student UG FTE	UG S/F Ratio	Faculty G FTE	Student G FTE	G S/F Ratio
	SPURIA	LORI	.50	10.60	21.20	.	.	.
	WANG	QING	1.00	16.93	17.10	.	.	.
	WEAVER	DAVID	.25	3.80	15.20	.	.	.
	WOJTOWICZ	RALPH	1.25	16.40	13.07	.	.	.
Subtotal dept			18.24	299.47		1.25	4.25	
ECFN	BROPLEH	RUDOLPH	.75	13.80	18.40	.	.	.
	GOCMEN	TUNCER	.75	8.20	11.20	.	.	.
	HOY	KYLE	1.00	15.00	12.93	.	.	.
	MANDZIK	AMANDA	1.00	14.20	12.13	.	.	.
	REID	KATHLEEN	.50	9.40	18.80	.	.	.
	SCHARMER	ROBERT	.50	6.80	13.60	.	.	.
	SWEENEY	CAROL	.25	4.00	16.00	.	.	.
	XIE	YUYING	1.00	17.00	17.00	.	.	.
Subtotal dept			5.75	88.40		.	.	
EDUC	BAKER	HELEN	3.88	21.60	8.71	1.00	1.50	1.50
	BURKE	DAWNE	.75	8.80	12.20	.25	2.00	8.00
	CABLE	DANETTE	.25	2.80	11.20	.25	.75	3.00
	COLE	TAUNA	1.00	12.07	12.07	.	.	.
	GEESAMAN	MARY	.25	.80	3.20	.	.	.
	HANNAH	CORNEILA	1.08	10.60	10.32	.	.	.
	HARGROVE	DORI	1.00	9.33	9.33	.	.	.
	JOHNSON	LEANN	.50	4.60	9.20	.	.	.
	KENNARD	DOUGLAS	.50	5.60	11.20	.	.	.
	KEPNER	TERRESA	1.15	4.07	3.52	.	.	.
	KIRBY	LINDA	.	.	.	.25	.25	1.00
	LUTMAN	MARGARET	.	.	.	.25	.50	2.00
	MITCHELL	BELINDA	1.00	14.60	14.60	.50	2.25	4.50
	MODLER	DAVID	.25	.80	3.20	.	.	.
	MORREALE	DIEDRE	.	.	.	.25	.75	3.00
	PENLAND	JENNIFER	.	.	.	.50	1.25	2.50
	SHETLER	SANDRA	.33	4.07	12.20	.33	.92	2.75
	TOOLE	GEORGIANN	.	.	.	.25	2.75	11.00
	TUTTLE	JAMES	.50	4.40	8.80	.50	3.00	6.00
Subtotal dept			12.45	104.13		4.33	15.92	

Fall 2018: SU FTEs by Department

Dept	L_name	F_name	Faculty UG FTE	Student UG FTE	UG S/F Ratio	Faculty G FTE	Student G FTE	G S/F Ratio
ENGL	BARRETT	JOYCE	.75	8.00	8.40	.	.	.
	BERENSCHOT	DENNIS	.99	15.80	12.26	.	.	.
	BRASHER	SALLY	.25	.88	3.54	.	.	.
	CANTRELL	MARK	.25	3.00	12.00	.	.	.
	DEWITT	AMY	.25	.86	3.43	.	.	.
	ELLZEY	MARY	.50	2.80	5.60	.	.	.
	ELMORE	JONATHAN	.25	2.80	11.20	.	.	.
	HANRAHAN	HEIDI	1.25	14.06	11.84	.25	.25	1.00
	JARMAN	LOIS	.50	2.80	5.60	.	.	.
	KRANTZ	RACHEL	1.00	11.80	11.80	.	.	.
	LAWRENSON	WILLIAM	.75	10.20	13.60	.	.	.
	MASINI-LARSEN	FREDERICA	.75	9.00	12.00	.	.	.
	MESSENGER	CARRIE	1.00	15.60	15.60	.	.	.
	NIXON	TIMOTHY	.75	9.80	12.20	.	.	.
	NUREDINOSKI	YILDIZ	1.08	10.27	9.48	.	.	.
	PACI	JAMIE	.25	3.20	12.80	.	.	.
	PATE	JAMES	1.00	14.20	15.87	.	.	.
	RICHARDS	MARYBETH	.50	7.60	15.20	.	.	.
	SANTANA	BRIAN	1.17	9.87	9.45	.	.	.
	SCHIERA	ANTHONY	1.17	13.47	11.54	.	.	.
	SHORR-PARKS	SADIE	.75	11.60	15.47	.	.	.
	SHURBUTT	SYLVIA	.48	2.40	5.03	.50	.50	1.00
	SKOWRONSKI	MARIA	.25	3.60	14.40	.	.	.
	SNIDER	CARA	.75	8.00	10.67	.	.	.
	STINSON	SAMUEL	1.25	18.80	15.04	.	.	.
	SUAREZ BUDENBEN	EVA-MARIA	.99	11.20	10.24	.	.	.
	WENGER	CHRISTY	.67	6.53	10.56	.	.	.
	WILSON	CHRISTOPHER	1.00	10.40	10.40	.	.	.
Subtotal dept			20.54	238.53		.75	.75	
ENPS	BEST	JASON	.67	9.87	14.80	.	.	.
	GROFF	JEFFREY	.81	11.07	9.55	.	.	.
	MADISON	MARK	.25	2.20	8.80	.	.	.
	MELTON	CECILIA	.98	14.87	15.10	.	.	.
	MURPHY	SYTIL	1.08	15.80	12.84	.	.	.

Fall 2018: SU FTEs by Department

Dept	L_name	F_name	Faculty UG FTE	Student UG FTE	UG S/F Ratio	Faculty G FTE	Student G FTE	G S/F Ratio
	RAY	GEORGE	.33	.80	2.40	.	.	.
	SHAFFER	STEVEN	1.00	17.20	17.40	.	.	.
	SNYDER	EDWARD	1.00	12.27	11.60	.	.	.
	VANCE	JOSHUA	.33	5.07	15.20	.	.	.
	VILA	PETER	.75	9.13	12.18	.	.	.
Subtotal dept			7.21	98.27		.	.	
FACS	BECKNER	JACLYN	.25	1.60	6.40	.	.	.
	CORPUS	KATHLEEN	.25	3.40	13.60	.	.	.
	DAY	DONNA	.25	5.40	21.60	.	.	.
	EGRESS	AMY	.50	6.60	13.20	.	.	.
	FILES	AMY	.25	3.20	12.80	.	.	.
	FLETCHER	ARNETTA	1.00	11.73	11.73	.	.	.
	HOUSTON	SUZANNE	.25	2.40	9.60	.	.	.
	MILLER	JENNIFER	.58	6.40	10.97	.	.	.
	STAYMAN	BRANDY	.25	4.20	16.80	.	.	.
Subtotal dept			3.58	44.93		.	.	
HIST	ALEXANDER	KEITH	.73	7.00	9.58	.	.	.
	BANKHURST	BENJAMIN	1.07	22.93	21.44	.	.	.
	BRASHER	SALLY	.49	7.40	15.20	.	.	.
	BROOMALL	JAMES	.50	3.80	7.60	.	.	.
	GORDON	DAVID	1.00	21.80	20.13	.	.	.
	MARJENHOFF	WILLIAM	.75	18.40	24.53	.	.	.
	MEADS	RACHAEL	.25	1.80	7.20	.	.	.
	PEREGO	ELIZABETH	1.00	19.60	16.00	.	.	.
	SANDY	JULIA	.50	8.00	16.00	.	.	.
	WYATT	JAMES	.25	4.20	16.80	.	.	.
Subtotal dept			6.54	114.93		.	.	
HPER	ANDROZZI	JARED	1.00	14.80	14.80	.	.	.
	BARNETT	ANDRO	2.08	23.53	14.19	.	.	.
	BATTS	BRITTANY	.50	9.80	19.60	.	.	.
	BOSLEY	CASSIE	.15	1.73	11.27	.	.	.
	CATER	MONTE	.25	.80	3.20	.	.	.
	DANIELS	SAMUEL	.17	1.07	6.40	.	.	.
	DUDASH	VALERIE	.08	.60	7.20	.	.	.

Fall 2018: SU FTEs by Department

Dept	L_name	F_name	Faculty UG FTE	Student UG FTE	UG S/F Ratio	Faculty G FTE	Student G FTE	G S/F Ratio
	DUDASH	MICHAEL	.08	.67	8.00	.	.	.
	ECKLEBERRY	JENNA	.25	2.67	10.67	.	.	.
	EICHELBERGER	DARRELL	.50	6.00	12.00	.	.	.
	FINCHAM	DAVID	.25	4.80	19.20	.	.	.
	GRAHAM	JESSICA	1.50	18.40	15.36	.	.	.
	HALL	MELISSA	1.75	16.00	8.00	.	.	.
	HAMANN	JANE	.50	8.80	17.60	.	.	.
	HIATT	TIRELL	.17	1.33	8.00	.	.	.
	HOEKSTRA	ALEXANDER	.25	4.80	19.20	.	.	.
	HOVATTER	RHONDA	.75	15.60	18.20	.	.	.
	JONES	ALEXANDER	.50	5.00	10.00	.	.	.
	KENDIG	STACEY	2.25	13.00	5.70	.	.	.
	KLINE	JOSHUA	.25	6.53	26.13	.	.	.
	LANE	SHATORA	.25	3.00	12.00	.	.	.
	LAWLESS	DESMOND	1.83	21.80	12.44	.	.	.
	LESLIE	MARISSA	.50	9.80	19.60	.	.	.
	LEWIS	BRYAN	.50	9.40	18.80	.	.	.
	LIVENGOOD	JENNIFER	.25	3.00	12.00	.	.	.
	MCCOOK	ERNEST	.25	6.20	24.80	.	.	.
	MILLER	MATTHEW	.25	2.80	11.20	.	.	.
	NAMOLIK	JUSTIN	.50	4.00	8.00	.	.	.
	PIACQUADIO	LESLIE	.75	12.20	16.60	.	.	.
	PLACE	GREGORY	2.00	19.20	12.53	.	.	.
	SAMPSELL	ERIC	.25	4.40	17.60	.	.	.
	SUTHERLAND	DYLAN	.25	3.80	15.20	.	.	.
	TRACY	JULIA	.50	8.40	16.80	.	.	.
	WILHELM	MARY JO KELL	.25	2.20	8.80	.	.	.
	WILLAUER	TRACY	.75	13.60	18.13	.	.	.
	WOLF	KARL	.24	3.20	13.60	.	.	.
	Subtotal dept		22.56	282.93		.	.	.
MUSC	ADAMS	KURTIS	.98	6.83	6.76	.	.	.
	CAMERON	WAYNE	.33	1.20	3.60	.	.	.
	CARLSON	RACHEL	.65	4.80	7.51	.	.	.
	CARTER	DANIEL	.17	.73	4.40	.	.	.

Fall 2018: SU FTEs by Department

Dept	L_name	F_name	Faculty UG FTE	Student UG FTE	UG S/F Ratio	Faculty G FTE	Student G FTE	G S/F Ratio
	COOK	MARK	1.05	11.90	11.37	.	.	.
	DROSINOS	DAVID	.25	1.33	5.00	.	.	.
	FEASLEY	WILLIAM	.17	.80	4.80	.	.	.
	GONZOL	DAVID	.75	8.80	11.73	.	.	.
	HIPPENSTEEL	SCOTT	.71	10.00	17.31	.	.	.
	HUENGER	THOMAS	.50	3.40	6.80	.	.	.
	KING	MARK	.08	.13	1.60	.	.	.
	KOCH	JEREMY	.25	.73	2.60	.	.	.
	LEAF	EDWARD	.08	.07	.80	.	.	.
	LIAO	YU-HSUAN	.66	2.33	3.55	.	.	.
	LOY II	WILLIAM	.17	.60	3.60	.	.	.
	MARTIN	JAMES	.08	.13	1.60	.	.	.
	MOORE	BROOKE	.42	2.53	5.30	.	.	.
	MUNRO	ANNE	.33	.67	2.00	.	.	.
	OWEN	STEVEN	.25	.80	2.60	.	.	.
	PACE	KEVIN	.69	1.10	1.52	.	.	.
	PEREZ-MEJIA	CAMILO	.17	.67	4.00	.	.	.
	PETZOLD-CARPENT	SUSAN	.74	11.20	15.19	.	.	.
	POLONCHAK	RICHARD	.17	.33	2.00	.	.	.
	REGAN	MELANIE	.24	.77	2.58	.	.	.
	RENNINGER	LAURA	.25	4.00	16.00	.	.	.
	ROBINSON	ROBERT	.50	4.87	8.50	.	.	.
	SHAW	RONNIE	.08	.20	2.40	.	.	.
	SHOOK	GREGORY	.15	.17	1.20	.	.	.
	TUDOR	ROBERT	.42	2.40	5.33	.	.	.
	WALKER	JOSHUA	.13	.10	.80	.	.	.
	WILDMAN	SIMON	.25	.33	1.20	.	.	.
	Subtotal dept		11.65	83.93		.	.	
NURS	ALBRIGHT	CAROLYN	.42	18.53	44.48	.	.	.
	ANDERSON	CHARLOTTE	.33	2.67	8.00	.	.	.
	BURKEY	DORIS	.	.	.	.92	5.00	5.45
	CLAYTON	LAURA	.42	9.00	21.60	.92	3.42	3.73
	DUFFEY	TAMMY	.33	2.13	6.40	.	.	.
	FETTY	ANGELA	.75	19.40	25.87	.	.	.

Fall 2018: SU FTEs by Department

Dept	L_name	F_name	Faculty UG FTE	Student UG FTE	UG S/F Ratio	Faculty G FTE	Student G FTE	G S/F Ratio
	GALEN	LAURIE	.42	11.00	26.40	.	.	.
	GROVES	MICHAEL	.58	12.67	21.71	.33	1.08	3.25
	HANCOCK	MARY	.50	20.60	41.20	.25	2.00	8.00
	MAILEY	SHARON	.08	1.80	21.60	.	.	.
	MOTT	BARBARA	.42	15.67	37.60	.	.	.
	PELFREY	AMY	.33	2.40	7.20	.	.	.
	RINI	ELIZABETH	1.25	39.20	31.36	.	.	.
	SHERMAN	BARBARA	.	.	.	.25	1.00	4.00
	SPENCER	BARBARA	.	.	.	.17	.83	5.00
	WATSON HUFFER	KELLY	.75	22.60	30.13	.33	1.33	4.00
	Subtotal dept		6.58	177.67		3.17	14.67	
PSGS	ADAMS-SQUARE	GRACE	.25	4.40	17.60	.	.	.
	AKOPIAN	MARAT	1.00	10.80	12.27	.	.	.
	DELLIGATTI	ANTHONY	.50	4.00	8.00	.	.	.
	GREENE	SAMUEL	1.00	12.60	12.67	.	.	.
	GUIRGUIS	MAGED	.75	6.60	8.80	.	.	.
	HOLTSLAG	AREND	1.31	10.33	8.31	.	.	.
	ISNER	JOHN	.25	1.20	4.80	.	.	.
	Subtotal dept		5.06	49.93		.	.	
PSYC	BERGER	ETANA	.50	7.60	15.20	.	.	.
	DAILY	LARRY	1.08	11.87	11.45	.	.	.
	DOBISH	HEIDI	.50	10.20	20.40	.	.	.
	GAVLAS	JOHN	.75	16.40	21.40	.	.	.
	HOUSTON	SUZANNE	.25	5.00	20.00	.	.	.
	LEVITAN	LINDSEY	1.17	15.20	12.40	.	.	.
	LOVELACE	CHRISTOPHER	.75	14.20	19.00	.	.	.
	MCCAULEY-TOKACH	DEBRA	.25	5.20	20.80	.	.	.
	MERZ	JOSEPH	1.00	19.60	19.60	.	.	.
	MILLS	MARSHA	.50	7.20	14.40	.	.	.
	ROWE	KIMBERLY	.50	8.60	17.20	.	.	.
	RUIZ	SUSAN	.25	4.40	17.60	.	.	.
	SECHLER	ELIZABETH	.	.	.	.25	1.25	5.00
	SEGAR	THOMAS	.	.	.	.25	3.25	13.00
	SPENCER	SHANAN	.25	4.60	18.40	.	.	.

Fall 2018: SU FTEs by Department

Dept	L_name	F_name	Faculty UG FTE	Student UG FTE	UG S/F Ratio	Faculty G FTE	Student G FTE	G S/F Ratio
	STEVENS	RICHARD	.	.	.	.25	2.50	10.00
	WENDLE	ANN	.	.	.	.75	8.50	11.33
	WHITEHOUSE	EMILEIGH	.50	8.40	16.80	.	.	.
Subtotal dept			8.25	138.47		1.50	15.50	
SOG	ANTHONY	ROBERT	1.25	21.00	16.07	.	.	.
	COBIAN	CHRISTOPHER	.25	3.60	14.40	.	.	.
	DARBOE	MOMODOU	1.00	9.20	9.20	.	.	.
	DEWITT	AMY	.75	8.00	10.67	.	.	.
	DRUMEA	PETRU	.50	6.20	12.40	.	.	.
	FARRIS	PATRICK	.25	2.00	8.00	.	.	.
	FLEMING	MONICA	.50	8.60	17.20	.	.	.
	HIKSON	DAVID	.25	4.60	18.40	.	.	.
	HOFE	C	.50	2.40	4.80	.	.	.
	HOWARD-BOSTIC	CHIQUITA	1.50	12.00	12.16	.	.	.
	HULSE	CHARLES	1.00	16.80	13.60	.	.	.
	KEEL	MAT	.50	9.00	18.00	.	.	.
	LEGREID	ANN	.25	1.60	6.40	.	.	.
	LEROI	MARTHA	.50	8.40	16.80	.	.	.
	LORENZETTI	RALPH	.25	1.00	4.00	.	.	.
	MARINO	EUGENE	.25	2.00	8.00	.	.	.
	PATTERSON	STEVEN	.25	5.80	23.20	.	.	.
	PHILLIPS	FRANCINE	.25	5.40	21.60	.	.	.
	SNYDER	RICHARD	.25	3.80	15.20	.	.	.
	SPEAKER	HOMER	.25	1.60	6.40	.	.	.
Subtotal dept			10.50	133.00		.	.	
SOWK	CLINE	CRAIG	.75	13.20	17.60	.	.	.
	CRAWLEY-WOODS	GERALDINE	1.00	10.07	10.07	.	.	.
	GARZON HAMPTON	AMY	.25	.20	.80	.	.	.
	GREEN	KAREN	.75	8.00	9.50	.	.	.
	MANZANO	KELLI	.50	7.00	14.00	.	.	.
	MCCULLOUGH	PIPPA	.42	3.33	8.00	.	.	.
	SPEIS	DANIEL	.25	2.40	9.60	.	.	.
Subtotal dept			3.92	44.20		.	.	
Grand Total			196.48	2659.93		16.00	97.58	