

# Shepherd University Academic Affairs Data 2015-2019

## A. Students by Residency

Table 1. Paid student FTE by Residency, student FTE by residency, headcount by residency

- a. *Paid student FTE by residency, Fall 2015 – Fall 2019*
- b. *Student FTE by residency, Fall 2015 – Fall 2019*
- c. *Student headcount by residency, Fall 2015 – Fall 2019*

## B. Undergraduate Students and Faculty

Table 2. Faculty FTE

Table 3. Baccalaureate Majors per Department and Majors per Full-Time Faculty

- a. *Majors per Department, Fall 2019*
- b. *Mean Number of Majors by Department, Fall 2015 - Fall 2019*
- c. *Change in Ratio of Majors to FT Faculty, Fall 2015 - Fall 2019*
- d. *Mean Ratios of Majors to FT Faculty, Fall 2015 - Fall 2019*

Table 4. RBA Majors

Table 5. Minors by Department

- a. *Minors by Department, Fall 2019*
- b. *Mean Number of Minors by Department, Fall 2015 - Fall 2019*

Table 6. Teacher Education Concentrations

- a. *Students in Teacher Education Concentrations, Fall 2019*
- b. *Mean Numbers of Students in Teacher Education Concentrations, Fall 2015 – Fall 2019*

Table 7. Baccalaureate Majors per Department and Teacher Education Students by Department of Concentration Advisement

- a. *Total Majors and Teacher Education Students, Fall 2019*
- b. *Mean Totals of Majors and Teacher Education Students, Fall 2015 – Fall 2019*

Table 8. FTE Student to FTE Faculty Ratios

- a. *Change in Ratios(FTE Students: FTE Faculty), 2015-2019*
- b. *Mean Ratios (FTE Students: FTE Faculty), 2015-2019*

Table 9. Student FTE Generated by Full-Time Faculty to Full-Time Faculty FTE Ratios

- a. *Change in FTE Ratios(FTE Students: FTE Faculty) 2015-2019*
- b. *Mean FTE Ratios(FTE Students: FTE Faculty) 2015-2019*

Table 10. Student FTE Generated by Part-Time Faculty to Part-Time Faculty FTE Ratios

- a. *Change in FTE Ratios(FTE Students: FTE Faculty) 2015-2019*
- b. *Mean FTE Ratios(FTE Students: FTE Faculty) 2015-2019*

Table 11. Student-to-Faculty FTE Ratios in Lower Level Courses

- a. *Change in Student FTE to Faculty FTE Ratios in Lower Level Courses, 2015-2019*
- b. *Mean Student FTE to Faculty FTE Ratios in Lower Level Courses, 2015-2019*

Table 12. Student-to-Faculty FTE Ratios in Upper Level Courses

- a. *Change in Student FTE to Faculty FTE Ratios in Upper Level Courses, 2015-2019*

*b. Mean Student FTE to Faculty FTE Ratios in Upper Level Courses, 2015-2019*

- Table 13. Graduates from Baccalaureate Programs
- a. Average Number of Baccalaureate Degrees by Major, 2014-2015 to 2018-2019*
  - b. Baccalaureate Graduates in 2018-2019*
- Table 14. SCH per FTE faculty, for non-General Studies / Core Curriculum courses
- a. Overall rank, Fall 2019, non-GS/CC courses*
  - b. Overall rank, Fall 2015-2019, non-GS/CC courses*
- Table 15. SCH per FTE faculty, for General Studies / Core Curriculum courses
- a. Overall rank, Fall 2019, GS/CC courses*
  - b. Overall rank, Fall 2015-2019, GS/CC courses*
- Table 16. Core Curriculum courses by time of day
- a. Core Curriculum courses by time of day, Monday-Thursday*
  - b. Core Curriculum courses by time of day, Friday, weekdays and Saturday*
- Table 17. Core Curriculum courses offered in standard timeslots, weekdays
- a. CC courses offered in standard timeslots, weekdays*
- Table 18. Online and hybrid courses, Fall 2015 – Fall 2019
- a. Hybrid and online courses, Fall 2015 – Fall 2019*
  - b. Percentages of hybrid and online courses, Fall 2015 – Fall 2019*

### **C. Graduate Students and Faculty**

- Table 19. Students Enrolled in Graduate Programs
- Table 20. Graduates from Graduate Programs
- Table 21. Graduate Student to Faculty FTE Ratios
- a. Mean Change in FTE Ratios (Student FTE: Faculty FTE) for Graduate Courses, 2015-2019*
  - b. Mean FTE Ratios (Student FTE: Faculty FTE) for Graduate Courses, 2015-2019*

### **D. Shepherd University Student Demographic Data**

- Table 22. Degree Targets
- Table 23. Mean ACT and ACT Equivalent Scores by Residency
- Table 24. Status by Residency, Five-Year Trends
- Table 25. ACT and ACT Equivalent Scores by Residency
- Table 26. Class Level by Residency
- Table 27. Retention of Fall 2018 Freshman Cohort by Residency
- Table 28. Graduation of Fall 2012 Freshman Cohort by Residency
- Table 29. Student Headcount by Registration Type
- Table 30. Student FTE by Registration Type
- Table 31. Student Headcount by Race and Ethnicity

### **E. Shepherd University Global Information**

- Table 32. Shepherd University FTE by Department and Instructor

This Acrobat file has been bookmarked for your convenience. To see bookmarks, click on the “Bookmarks” tab on the left side of the Acrobat window.

**Table 1a. Paid student FTE by residency**

Residency	SU					2015-2019
	Fall 2015	Fall 2016	Fall 2017	Fall 2018	Fall 2019	% Change
Total	3282.15	3092.02	3010.05	2934.48	2802.92	-14.6%
In-state	2032.13	1954.38	1943.77	1887.40	1844.53	-9.2%
Out-of-state	1250.02	1137.63	1066.28	1047.08	958.38	-23.3%

**Table 1b. Student FTE by residency**

Residency	SU					2015-2019
	Fall 2015	Fall 2016	Fall 2017	Fall 2018	Fall 2019	% Change
Total	3282.09	3094.38	3002.35	2932.61	2797.78	-14.8%
In-state	2028.27	1946.90	1930.28	1877.68	1824.28	-10.1%
Out-of-state	1253.82	1147.48	1072.07	1054.93	973.50	-22.4%

**Table 1c. Student headcount by residency**

Residency	SU					2015-2019
	Fall 2015	Fall 2016	Fall 2017	Fall 2018	Fall 2019	% Change
Total	3913	3826	3789	3723	3628	-7.3%
In-state	2361	2333	2321	2231	2231	-5.5%
Out-of-state	1552	1493	1468	1492	1397	-10.0%

**General Explanation/Definitions.**

1. One student *FTE* (full-time equivalent) equals 15 credit hours for baccalaureate students and 12 credit hours for graduate students.
2. The **% change** is the difference between the most recent data and the first column of data, divided by the first column of data.
3. Numbers are for undergraduate and graduate students combined.

**Table 2. Faculty FTE**

Department						2015-2019	
	Fall 2015	Fall 2016	Fall 2017	Fall 2018	Fall 2019	Mean	% Change
CAT	12.20	12.47	13.20	12.51	12.00	12.48	-1.6%
MCOM / COMM	7.50	7.00	6.74	7.23	8.00	7.29	6.7%
ENGL (including stretch)	20.99	19.11	19.78	20.54	18.83	19.85	-10.3%
HIST	10.31	10.26	7.19	6.54	7.30	8.32	-29.2%
MUSC	15.04	13.22	12.57	11.65	11.35	12.77	-24.5%
Arts and Humanities	66.04	62.06	59.48	58.47	57.48	60.71	-13.0%
PSCI / PSGS / GGGS	4.75	5.00	4.65	5.06	6.57	5.21	38.3%
PSYC	9.87	9.25	10.06	8.25	9.12	9.31	-7.6%
SOWK	3.17	2.67	3.25	3.92	3.49	3.30	10.1%
SOGE / SCCJ	9.00	10.74	11.00	10.50	8.00	9.85	-11.1%
Social & Behavioral Sci.	26.79	27.66	28.96	27.73	27.18	27.66	1.5%
Arts Hum Soc Sci	92.83	89.72	88.44	86.20	84.66	88.37	-8.8%
BADM	7.30	8.12	9.25	9.00	8.75	8.48	19.9%
ECON / ECFN	5.74	6.00	5.75	5.75	5.25	5.70	-8.5%
ACCT	3.25	3.00	2.75	2.75	2.75	2.90	-15.4%
Business	16.29	17.12	17.75	17.50	16.75	17.08	2.8%
BIOL	11.12	10.33	11.28	12.85	12.19	11.55	9.6%
CHEM	6.42	6.42	6.03	5.89	5.97	6.15	-7.0%
CSME (including stretch)	19.39	17.81	18.22	18.24	18.79	18.49	-3.1%
ENVS / ENPS	6.33	7.58	6.83	7.21	6.85	6.96	8.2%
Sci Tech Engr Math	43.26	42.14	42.36	44.19	43.80	43.15	1.2%
NURS	7.33	6.92	6.75	6.58	6.42	6.80	-12.4%
EDUC	12.60	12.36	12.94	12.45	12.69	12.61	0.7%
RSES (incl. FACS)	25.31	27.91	25.90	26.14	22.92	25.64	-9.4%
Nurs Educ Health Sci	45.24	47.19	45.59	45.17	42.03	45.04	-7.1%
<b>Shepherd University</b>	<b>197.62</b>	<b>196.17</b>	<b>194.14</b>	<b>193.06</b>	<b>187.24</b>	<b>193.65</b>	<b>-5.3%</b>

**General Explanation/Definitions.**

1. One faculty FTE (full-time equivalent) equals 12 hours of instructional responsibility.
2. The **mean** is the average for five years.
3. The **% change** is the difference between the most recent and the earliest fall semester FTE's divided by the earliest fall FTE. For example, for Communication in Fall 2019, this would be  $(8.00 - 7.50) / 7.50$ .
4. Numbers include undergraduate instruction only.
5. As of Fall 2018, Stretch English and Stretch Mathematics courses are housed in English and CSME, respectively. For Fall 2017 and earlier, the FTE for these courses have been added to the English and CSME FTE totals.

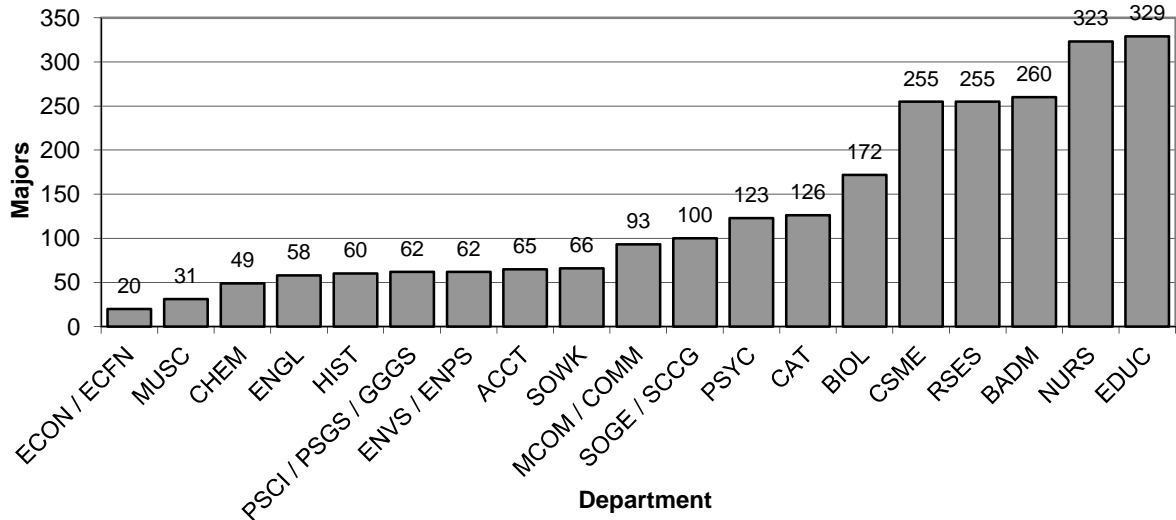
**Table 3. Baccalaureate Majors per Department and Majors per Full-Time Faculty**

Department	Fall 2015			Fall 2016			Fall 2017			Fall 2018			Fall 2019			Mean N/FT Fac	Change N/FT Fac	Percentage Change in Majors
	N	FT Fac	N/FT Fac	N	FT Fac	N/FT Fac	N	FT Fac	N/FT Fac	N	FT Fac	N/FT Fac	N	FT Fac	N/FT Fac			
CAT	144	9	16.0	120	9	13.3	116	11	10.5	124	10.5	11.8	126	9.5	13.3	13.0	-2.74	-12.5%
MCOM / COMM	104	4	26.0	104	4	26.0	105	4	26.3	89	4	22.3	93	4	23.3	24.8	-2.75	-10.6%
ENGL (including stretch)	79	13.5	5.9	76	13.5	5.6	56	13.5	4.1	76	15.5	4.9	58	15.5	3.7	4.9	-2.11	-26.6%
HIST	84	7	12.0	72	7	10.3	56	7	8.0	64	7	9.1	60	7	8.6	9.6	-3.43	-28.6%
MUSC	38	8	4.8	30	8	3.8	35	7.5	4.7	39	8.5	4.6	31	9	3.4	4.2	-1.31	-18.4%
Arts and Humanities	449	41.5	10.8	402	41.5	9.7	368	43	8.6	392	45.5	8.6	368	45	8.2	9.2	-2.64	-18.0%
PSCI / PSGS / GGGS	81	5	16.2	73	5	14.6	60	4	15.0	62	5	12.4	62	6	10.3	13.7	-5.87	-23.5%
PSYC	132	6	22.0	123	6	20.5	133	6	22.2	127	6	21.2	123	6	20.5	21.3	-1.50	-6.8%
SOWK	86	3	28.7	97	3	32.3	91	3	30.3	74	3	24.7	66	3	22.0	27.6	-6.67	-23.3%
SOGE / SCCG	117	6.5	18.0	110	6.5	16.9	90	6.5	13.8	86	5.5	15.6	100	5	20.0	16.9	2.00	-14.5%
Social & Behavioral Sci.	416	20.5	20.3	403	20.5	19.7	374	19.5	19.2	349	19.5	17.9	351	20	17.6	18.9	-2.74	-15.6%
Arts Hum Soc Sci	865	62	14.0	805	62	13.0	742	62.5	11.9	741	65	11.4	719	65	11.1	12.3	-2.89	-16.9%
BADM	291	5	58.2	243	5	48.6	270	4.5	60.0	259	4.5	57.6	260	6.5	40.0	52.9	-18.20	-10.7%
ECON / ECFN	32	5	6.4	29	5	5.8	29	5	5.8	28	5	5.6	20	5	4.0	5.5	-2.40	-37.5%
ACCT	85	3	28.3	75	3	25.0	65	3	21.7	68	3	22.7	65	3	21.7	23.9	-6.67	-23.5%
Business	408	13	31.4	347	13	26.7	364	12.5	29.1	355	12.5	28.4	345	14.5	23.8	27.9	-7.59	-15.4%
BIOL	203	9.5	21.4	190	8.5	22.4	189	9	21.0	192	9	21.3	172	10	17.2	20.7	-4.17	-15.3%
CHEM	50	5.75	8.7	43	5.75	7.5	45	5.5	8.2	46	5.5	8.4	49	5.5	8.9	8.3	0.21	-2.0%
CSME (including stretch)	244	11	22.2	229	11	20.8	261	12	21.8	247	13	19.0	255	13	19.6	20.7	-2.57	4.5%
ENVS / ENPS	99	6	16.5	87	6	14.5	84	6	14.0	67	7	9.6	62	7	8.9	12.7	-7.64	-37.4%
Sci Tech Engr Math	596	32.25	18.5	549	31.25	17.6	579	32.5	17.8	552	34.5	16.0	538	35.5	15.2	17.0	-3.33	-9.7%
NURS	433	11	39.4	438	13	33.7	388	13	29.8	341	10.5	32.5	323	9.5	34.0	33.9	-5.36	-25.4%
EDUC	512	13.5	37.9	433	13.5	32.1	383	11.5	33.3	364	11	33.1	329	12	27.4	32.8	-10.51	-35.7%
RSES (incl. FACS)	337	10.5	32.1	341	9.5	35.9	308	9	34.2	284	9	31.6	255	9	28.3	32.4	-3.76	-24.3%
Nurs Educ Health Sci	1282	35	36.6	1212	36	33.7	1079	33.5	32.2	989	30.5	32.4	907	30.5	29.7	32.9	-6.89	-29.3%
Shepherd University	3151	142.3	22.2	2913	142.3	20.5	2764	141	19.6	2637	142.5	18.5	2509	145.5	17.2	19.6	-4.91	-20.4%

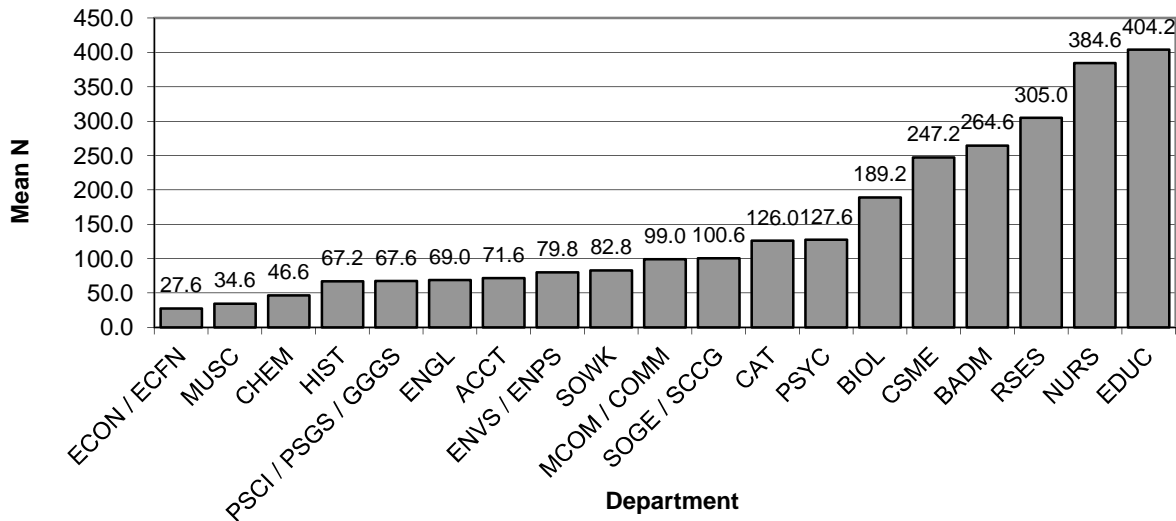
**General Explanation/Definitions.**

1. **N** is the number of undergraduate students in degree programs offered by the department. This includes first and second majors.
2. **FT Fac** is the number of full-time faculty in the department including visiting faculty. This is generally a count of "bodies" from the faculty list produced by the Provost's office. Exceptions are where there is a permanent contractual specification of less than full-time; released time is not counted and neither is leave, unless there is a full-time replacement, because those are unlikely to affect the number of majors. Herendeen, Mailey, Martz, Renninger, Tudor, Warburton, and Cantrell are all counted as *half* positions. Master faculty are not included. R. Stevens is not counted here, as he works exclusively with graduate students.
3. The **N/FT Fac** is the ratio of students to faculty.
4. The **mean N/FT Fac** is the average N/FT Fac for the years shown.
5. The **change** is the current year's N/FT Fac minus the first year's N/FT Fac.
6. The **percentage change in majors** is the difference between the current year's number of majors and the first year's number of majors, divided by the first year's number of majors.

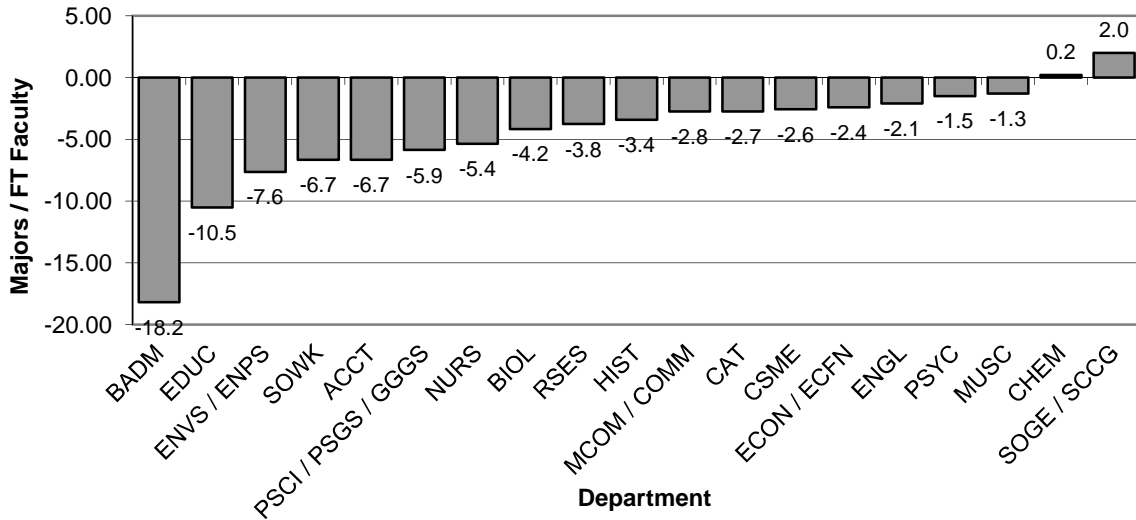
**Graph 3A: Majors per Department, Fall 2019**  
(from Table 3)



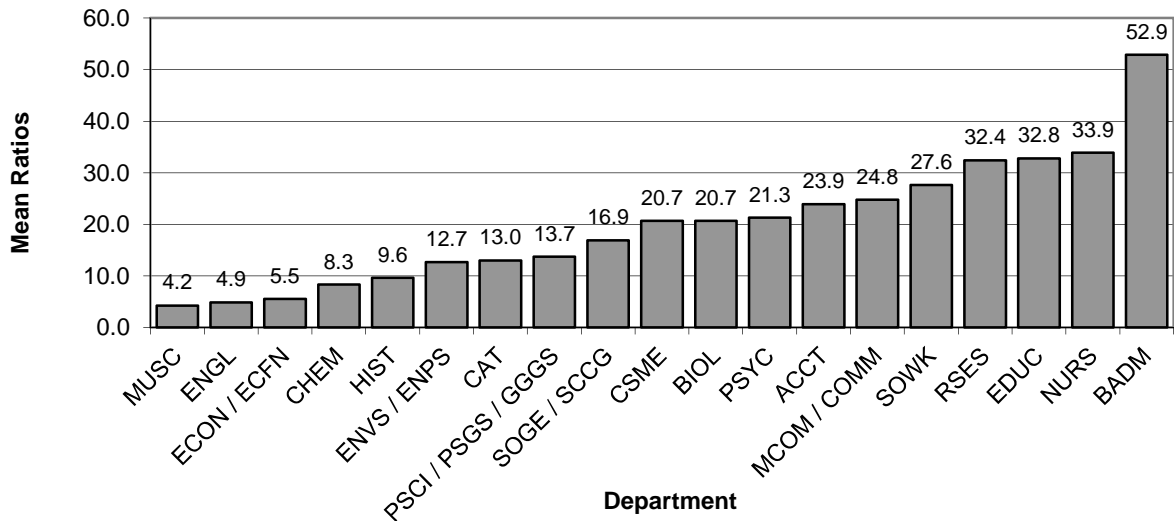
**Graph 3B: Mean Number of Majors by Department, Fall 2015 - Fall 2019**  
(from Table 3)



**Graph 3C: Change in Ratio of Majors to FT Faculty,  
Fall 2015 - Fall 2019**  
(from Table 3)



**Graph 3D: Mean Ratios of Majors to FT Faculty,  
Fall 2015 - Fall 2019**  
(from Table 3)



**Table 4. RBA majors**

<b>RBA</b>	<b>2015</b>	<b>2016</b>	<b>2017</b>	<b>2018</b>	<b>2019</b>
Headcount	147	149	135	130	90
Full-time	46	55	58	49	38
Non-credit	1	0	0	3	0
Part-time	100	94	77	78	52
FTE	77.87	84.67	83.33	76.23	53.60
Average SCH per semester	7.95	8.52	9.26	8.80	8.93
Average age of majors	39.5	38.4	37.1	37.2	37.5
Graduates	88	132	96	78	

Headcount, FTE, average SCH per semester, and average age are calculated for Fall semester of the listed academic year.

Graduates are counted from the fall of the listed year through the summer of the following year. Numbers of graduates are not available for the most recent year listed.



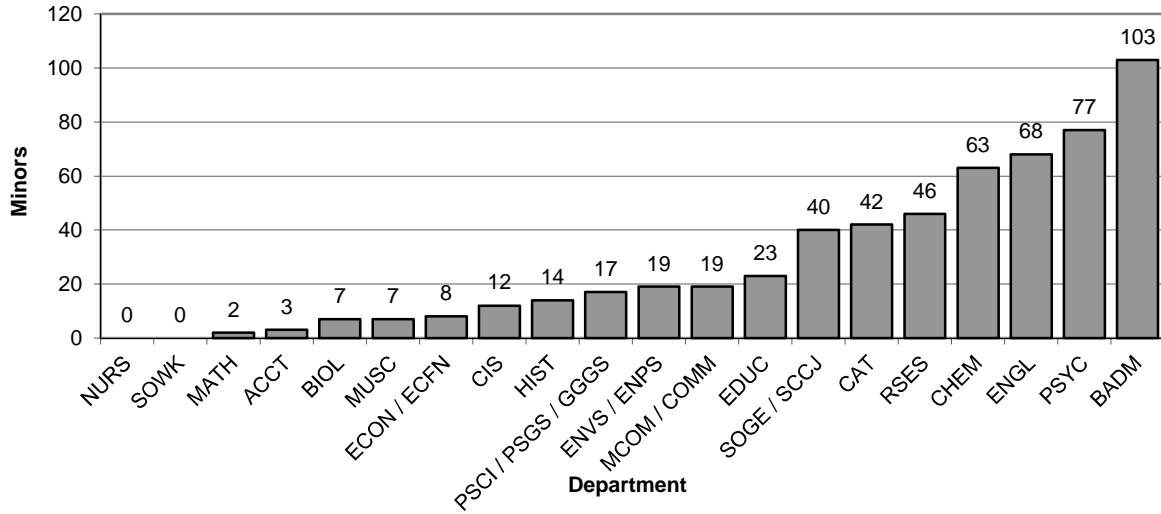
**Table 5. Minors by Department**

Department	Fall 2015		Fall 2016		Fall 2017		Fall 2018		Fall 2019		2015-2019		
	N	N Change	N	N Change	N	N Change	N	N Change	N	N Change	Mean N	Change	Mean Change
CAT	40	5	30	-10	29	-1	27	-2	42	15	33.6	2.00	1.40
MCOM / COMM	23	1	21	-2	13	-8	18	5	19	1	18.8	-4.0	-0.60
ENGL (including stretch)	47	-17	53	6	52	-1	62	10	68	6	56.4	21.0	0.80
HIST	24	-2	15	-9	11	-4	12	1	14	2	15.2	-10.0	-2.40
MUSC	10	-6	6	-4	11	5	8	-3	7	-1	8.4	-3.0	-1.80
Arts and Humanities	144	-19	125	-19	116	-9	127	11	150	23	132.4	6.0	-2.60
PSCI / PSGS / GGGS	20	-1	18	-2	19	1	19	0	17	-2	18.6	-3.0	-0.80
PSYC	89	17	87	-2	75	-12	62	-13	77	15	78.0	-12.0	1.00
SOWK	0	0	0	0	0	0	0	0	0	0	0.0	0.0	0.00
SOGE / SCCG	49	5	41	-8	32	-9	32	0	40	8	38.8	-9.0	-0.80
Social & Behavioral Sci.	158	21	146	-12	126	-20	113	-13	134	21	135.4	-24.0	-0.60
Arts Hum Soc Sci	302	2	271	-31	242	-29	240	-2	284	44	267.8	-18.0	-3.20
BADM	102	4	88	-14	102	14	114	12	103	-11	101.8	1.0	1.00
ECON / ECFN	5	-5	6	1	7	1	4	-3	8	4	6.0	3.0	-0.40
ACCT	6	-11	6	0	5	-1	7	2	3	-4	5.4	-3.0	-2.80
Business	113	-12	100	-13	114	14	125	11	114	-11	113.2	1.0	-2.20
BIOL	12	2	7	-5	3	-4	5	2	7	2	6.8	-5.0	-0.60
CHEM	50	4	63	13	38	-25	52	14	63	11	53.2	13.0	3.40
CIS	13	8	6	-7	12	6	14	2	12	-2	11.4	-1.0	1.40
MATH (including stretch)	7	-2	6	-1	6	0	6	0	2	-4	5.4	-5.0	-1.40
ENVS / ENPS	14	3	18	4	20	2	16	-4	19	3	17.4	5.0	1.60
Sci Tech Engr Math	96	15	100	4	79	-21	93	14	103	10	94.2	7.0	4.40
NURS	0	0	0	0	0	0	0	0	0	0	0.0	0.0	0.00
EDUC	23	3	22	-1	23	1	22	-1	23	1	22.6	0.0	0.60
RSES (incl. FACS)	46	0	56	10	38	-18	40	2	46	6	45.2	0.0	0.00
Nurs Educ Health Sci	69	3	78	9	61	-17	62	1	69	7	67.8	0.0	0.60
<b>Shepherd University</b>	<b>580</b>	<b>8</b>	<b>549</b>	<b>-31</b>	<b>496</b>	<b>-53</b>	<b>520</b>	<b>24</b>	<b>570</b>	<b>50</b>	<b>543.0</b>	<b>-10.0</b>	<b>-0.40</b>

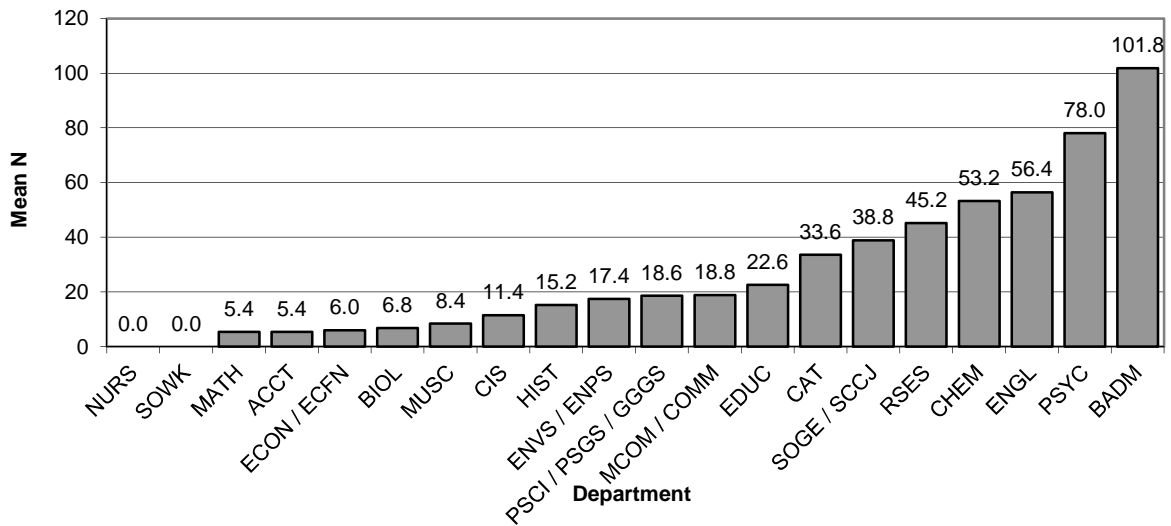
**General Explanation/Definitions.**

1. **N** is the number of students in minor programs offered by the department.
2. The **N change** is the difference in the number of students in consecutive years.
3. The **mean N** is the mean number of students over the years represented (five years).
4. The **mean change** is the sum of the annual changes divided by the number of annual changes.
5. Women's Studies is not attached to any department. (Gender and Women's Studies is attached to ENGL.) There was one WMST minor in Fall 2019.
6. Appalachian Studies is not attached to any department. There were eight APPN minors in Fall 2019.

**Graph 5A: Minors by Department, Fall 2019**  
(from Table 5)



**Graph 5B: Mean Number of Minors by Department, Fall 2015 - Fall 2019**  
(from Table 5)



**Table 6. Teacher Education Concentrations**

Department	Teaching Concentration	Fall 2015	Fall 2016	Fall 2017	Fall 2018	Fall 2019	Mean	Change	Advising F19	
									Fac	Majors
CAT	Art	22	20	15	14	15	17.2	-7	9.5	30
Biology	Biology	2	2	2	0	1	1.4	-1	10	2
RSES	FACS	7	5	3	0	0	3.0	-7	9	0
Biology	Chemistry	1	1	2	0	0	0.8	-1	10	0
Education	Elementary	225	202	136	129	129	164.2	-96	12	258
English	English	49	27	19	29	29	30.6	-20	15.5	58
Biology	General Science	3	4	6	6	7	5.2	4	10	14
RSES	Health, Phys. Ed.	68	62	59	53	42	56.8	-26	9	84
CSME	Mathematics	16	14	12	10	9	12.2	-7	13	18
Music	Music	84	70	57	50	37	59.6	-47	9	74
Education	Social Studies	59	44	50	55	42	50.0	-17	12	84
English	Spanish	4	4	3	1	0	2.4	-4	15.5	0
Education	C & I	22	18	13	8	4	13.0	-18	12	8

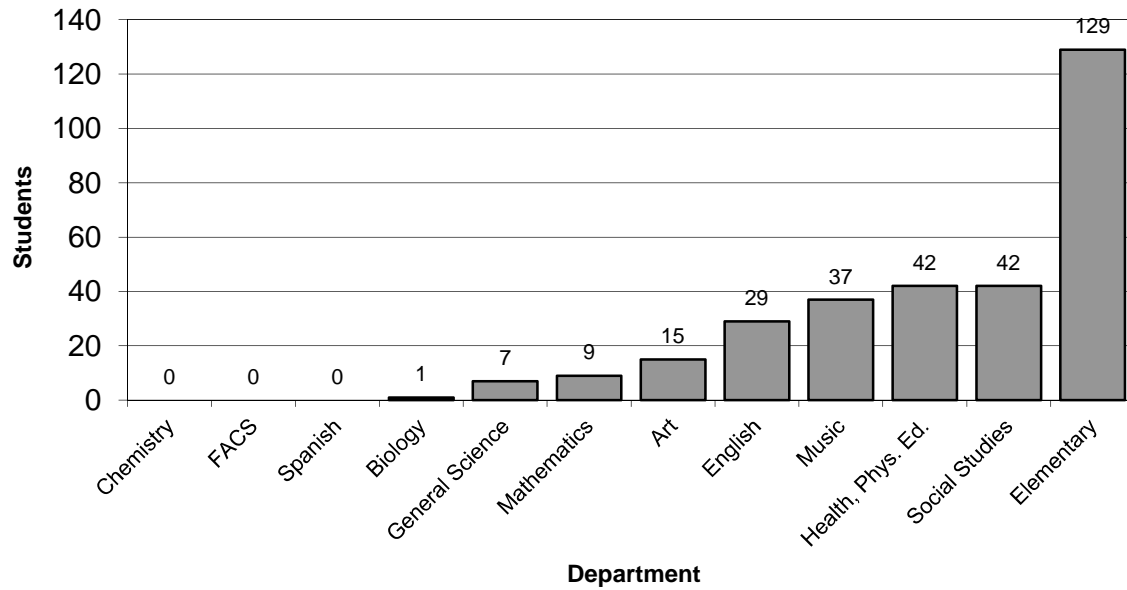
Note that the C & I students are included both in the Education department and in the departments of their concentrations. The secondary education majors are included only in the departments of their concentrations.

The Advising F19 "majors" is the number of students in the Fall 2019 column multiplied by 2, as Joe Simplicio specified starting with the 2003 reports. "Fac" is the number of full-time faculty in the department in which the concentration is housed.

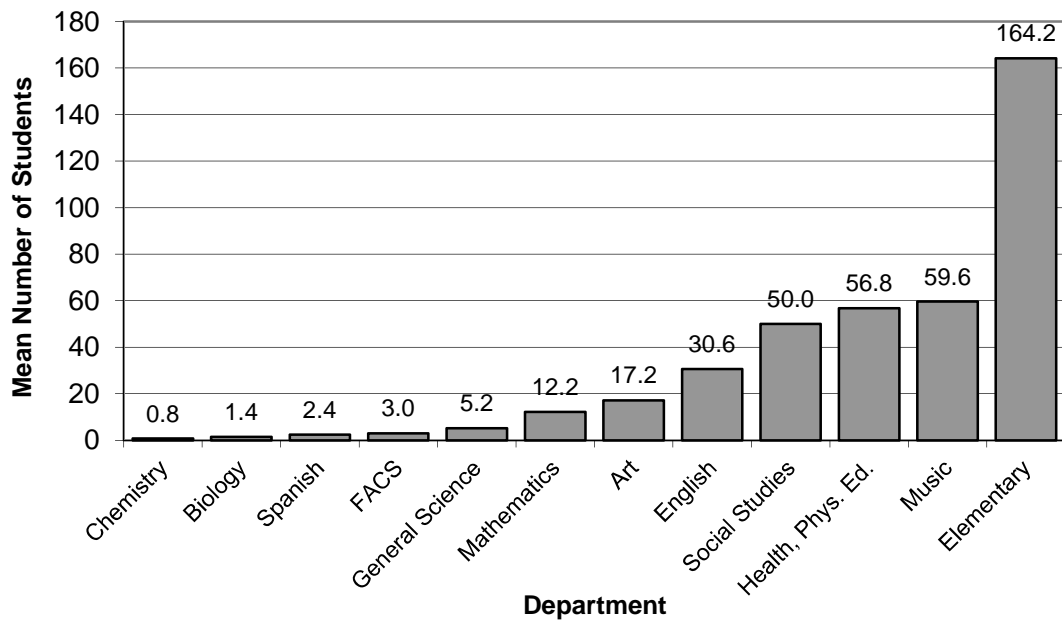
**General Explanation/Definitions.**

1. A **concentration** is a teaching specialty such as English or Biology. The C&I graduate students' concentrations have been added to their departments where applicable. For Fall 2018, of the nine C&I students, four are Individualized, four are in Special Education, and one has no concentration declared.
2. The **department** is the unit responsible for the concentration.
3. The numbers for each semester are the number of declared students in each concentration. Any given student may have more than one concentration.
4. The **mean** is the average of the annual number of students in a given concentration.
5. The **change** is the number of students in the current year minus the number of students in the first year.

**Graph 6A. Students in Teacher Education Concentrations, Fall 2019**  
(from Table 6)



**Graph 6B. Mean Numbers of Students in Teacher Education Concentrations, Fall 2015-Fall 2019**  
(from Table 6)



**Table 7. Baccalaureate Majors per Department and Teacher Education Students by Department of Concentration Advisement**

Department	Fall 2015			Fall 2016			Fall 2017			Fall 2018			Fall 2019			Fall 2015-2019		
	N	Secondary Education and C&I	Total	N	Secondary Education and C&I	Total	N	Secondary Education and C&I	Total	N	Secondary Education and C&I	Total	N	Secondary Education and C&I	Total	Mean N	Mean Secondary Education	Mean Total
CAT	144	22	166	120	20	140	116	15	131	124	14	138	126	15	141	126.0	17.2	143.2
MCOM / COMM	104	0	104	104	0	104	105	0	105	89	0	89	93	0	93	99.0	0.0	99.0
ENGL (including stretch)	79	53	132	76	31	107	56	22	78	76	30	106	58	29	87	69.0	33.0	102.0
HIST	84	0	84	72	0	72	56	0	56	64	0	64	60	0	60	67.2	0.0	67.2
MUSC	38	84	122	30	70	100	35	57	92	39	50	89	31	37	68	34.6	59.6	94.2
Arts and Humanities	449	159	608	402	121	523	368	94	462	392	94	486	368	81	449	395.8	109.8	505.6
PSCI / PSGS / GGGS	81	0	81	73	0	73	60	0	60	62	0	62	62	0	62	67.6	0.0	66.4
PSYC	132	0	132	123	0	123	133	0	133	127	0	127	123	0	123	127.6	0.0	127.6
SOWK	86	0	86	97	0	97	91	0	91	74	0	74	66	0	66	82.8	0.0	82.8
SOGE / SCCG	117	0	117	110	0	110	90	0	90	86	0	86	100	0	100	100.6	0.0	100.6
Social & Behavioral Sci.	416	0	416	403	0	403	374	0	374	349	0	349	351	0	351	378.6	0.0	378.6
Arts Hum Soc Sci	865	159	1024	805	121	926	742	94	836	741	94	835	719	81	800	774.4	109.8	884.2
BADM	291	0	298	243	0	270	270	0	273	259	0	259	260	0	260	264.6	0.0	272.0
ECON / ECFN	32	0	32	29	0	29	29	0	29	28	0	28	20	0	20	27.6	0.0	27.6
ACCT	85	0	85	75	0	75	65	0	65	68	0	68	65	0	65	71.6	0.0	71.6
Business	408	0	408	347	0	347	364	0	364	355	0	355	345	0	345	363.8	0.0	363.8
BIOL	203	6	209	190	7	197	189	10	199	192	6	198	172	8	180	189.2	7.4	196.6
CHEM	50	0	50	43	0	43	45	0	45	46	0	46	49	0	49	46.6	0.0	46.6
CSME (including stretch)	217	16	233	206	14	206	261	12	273	247	10	257	255	9	264	237.2	12.2	246.6
ENVS / ENPS	99	0	99	87	0	87	84	0	84	67	0	67	62	0	62	79.8	0.0	79.8
Sci Tech Engr Math	569	22	591	526	21	570	579	22	601	552	16	568	538	17	555	552.8	19.6	577.0
NURS	433	0	433	438	0	438	388	0	388	341	0	341	323	0	323	384.6	0.0	384.6
EDUC	512	61	573	433	44	477	383	50	433	364	55	419	329	42	371	404.2	50.4	454.6
RSES (incl. FACS)	337	75	412	342	67	409	308	62	370	284	53	337	255	42	297	305.2	59.8	365.0
Nurs Educ Health Sci	1282	136	1418	1213	111	1324	1079	112	1191	989	108	1097	907	84	991	1094.0	110.2	1204.2
<b>Shepherd University</b>	<b>3124</b>	<b>317</b>	<b>3441</b>	<b>2891</b>	<b>253</b>	<b>3144</b>	<b>2764</b>	<b>228</b>	<b>2992</b>	<b>2637</b>	<b>218</b>	<b>2855</b>	<b>2509</b>	<b>182</b>	<b>2691</b>	<b>2785.0</b>	<b>239.6</b>	<b>3024.6</b>

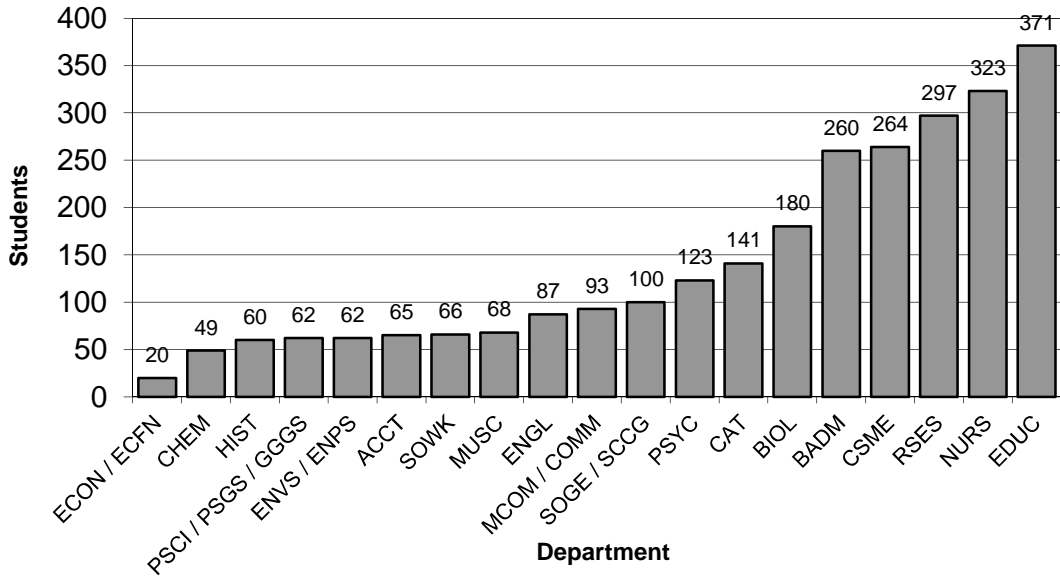
**General Explanation/Definitions.**

1. **N** is the number of undergraduate students in degree programs offered by the department. This includes first and second majors.
2. **Secondary Education and C&I** is the number of Secondary Education and C&I students with concentrations housed in that department. "Housing" is considered to be in the department if the Secondary Education coordinator for the concentration is in the department. For EDUC, numbers include Secondary Education Social Studies concentrations, and C&I Elementary Education and Social Studies concentrations; baccalaureate Elementary Education majors are not counted here.
3. **Total** is the sum of **N** and **Secondary Education**. Note that, for the EDUC department, this double-counts some students (as listed in the "Secondary Education and C&I" description above), and is therefore not likely to be useful.

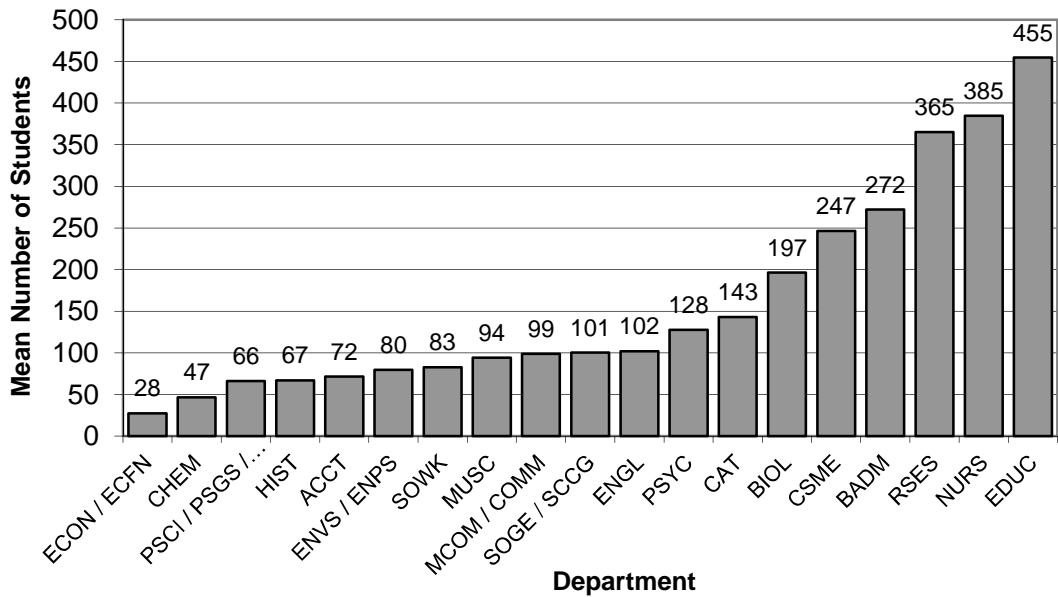
Concentration housings are as follows:

- ART / CAT:** Art
- BIOL:** Biology, Chemistry, General Science
- CSME:** Mathematics
- EDUC:** Social Studies, C&I
- ENGL:** English, Spanish
- RSES:** Health and Physical Education, FACS (with BADM through Fall 2016)
- MUSC:** Music

**Graph 7a. Total Majors and Teacher Education Students, Fall 2019**  
(from Table 7)



**Graph 7B. Mean Totals of Majors and Teacher Education Students, Fall 2015-Fall 2019**  
(from Table 7)



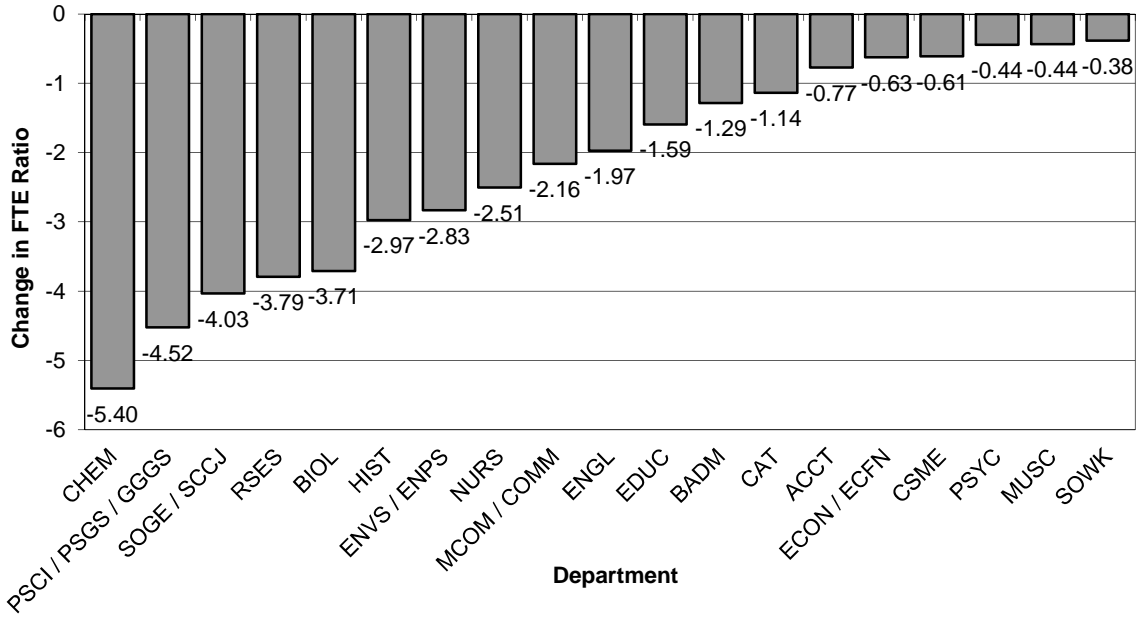
**Table 8. FTE Student to FTE Faculty Ratios**

Department	Fall 2015		Fall 2016		Fall 2017		Fall 2018		Fall 2019				Fall 2015-2019	
	Ratio	Change	Ratio	Change	Ratio	Change	Ratio	Change	F-FTE	S-FTE	Ratio	Change	Mean Ratio	Change in Ratio
CAT	12.87	-0.25	12.48	-0.39	12.09	-0.39	12.12	0.03	12.00	140.80	11.73	-0.39	12.26	-1.14
MCOM / COMM	13.63	-0.03	13.18	-0.45	13.90	0.72	13.43	-0.46	8.00	91.73	11.47	-1.97	13.12	-2.16
ENGL (including stretch)	13.36	-0.31	12.83	-0.53	11.77	-1.05	11.61	-0.16	18.83	214.33	11.38	-0.23	12.19	-1.97
HIST	19.34	0.45	16.21	-3.13	16.91	0.71	17.57	0.66	7.30	119.47	16.37	-1.21	17.28	-2.97
MUSC	7.47	-0.50	7.86	0.39	7.63	-0.23	7.20	-0.42	11.35	79.83	7.03	-0.17	7.44	-0.44
Arts and Humanities	12.89	-0.25	12.30	-0.59	11.83	-0.47	11.74	-0.09	57.48	646.16	11.24	-0.49	12.00	-1.65
PSCI / PSGS / GGGS	16.51	1.00	12.68	-3.83	13.18	0.50	9.87	-3.31	6.57	78.73	11.98	2.12	12.84	-4.52
PSYC	15.24	-0.52	15.54	0.30	13.76	-1.77	16.78	3.02	9.12	134.93	14.79	-1.99	15.22	-0.44
SOWK	12.30	-0.64	16.36	4.05	14.52	-1.83	11.28	-3.25	3.49	41.60	11.92	0.64	13.28	-0.38
SOGE / SCCJ	17.56	-1.98	14.47	-3.09	13.47	-1.00	12.67	-0.81	8.00	108.20	13.53	0.86	14.34	-4.03
Social & Behavioral Sci.	15.89	-0.76	14.69	-1.21	13.64	-1.04	13.18	-0.46	27.18	363.46	13.37	0.19	14.16	-2.52
Arts Hum Soc Sci	13.76	14.30	13.03	-0.72	12.42	-0.61	12.20	-0.22	84.66	1009.62	11.93	-0.28	12.67	-1.83
BADM	17.29	2.69	16.54	-0.75	16.11	-0.43	16.07	-0.04	8.75	140.00	16.00	-0.07	16.40	-1.29
ECON / ECFN	16.97	1.37	15.67	-1.30	15.58	-0.08	15.37	-0.21	5.25	85.80	16.34	0.97	15.99	-0.63
ACCT	17.35	0.50	15.87	-1.49	14.98	-0.88	15.78	0.80	2.75	45.60	16.58	0.80	16.11	-0.77
Business	17.19	19.17	16.11	-1.07	15.76	-0.35	15.79	0.03	16.75	271.40	16.20	0.41	16.21	-0.99
BIOL	18.63	1.05	17.42	-1.21	16.90	-0.51	15.13	-1.77	12.19	181.93	14.92	-0.20	16.60	-3.71
CHEM	19.25	-0.12	17.05	-2.20	17.68	0.63	15.19	-2.49	5.97	82.67	13.85	-1.34	16.60	-5.40
CSME (including stretch)	15.78	16.36	15.23	-0.55	15.35	0.11	16.42	1.07	18.79	285.13	15.17	-1.24	15.59	-0.61
ENVS / ENPS	16.95	0.46	15.37	-1.58	14.75	-0.62	13.63	-1.12	6.85	96.67	14.11	0.48	14.96	-2.83
Sci Tech Engr Math	17.20	0.18	16.07	-1.13	16.00	-0.07	15.42	-0.57	43.80	646.40	14.76	-0.67	15.89	-2.44
NURS	24.38	-0.74	24.25	-0.13	23.05	-1.20	27.00	3.95	6.42	140.40	21.87	-5.13	24.11	-2.51
EDUC	9.79	-1.56	8.97	-0.82	8.49	-0.48	8.36	-0.13	12.69	104.00	8.20	-0.17	8.76	-1.59
RSES (incl. FACS)	15.60	0.09	13.53	-2.07	14.07	0.54	12.54	-1.53	22.92	270.73	11.81	-0.73	13.51	-3.79
Nurs Educ Health Sci	15.41	-0.49	13.91	-1.50	13.82	-0.09	13.50	-0.32	42.03	515.13	12.26	-1.24	13.78	-3.15
<b>Shepherd University</b>	<b>15.17</b>	<b>-0.10</b>	<b>14.17</b>	<b>-1.01</b>	<b>13.84</b>	<b>-0.33</b>	<b>13.57</b>	<b>-0.27</b>	<b>187.24</b>	<b>2442.55</b>	<b>13.05</b>	<b>-0.52</b>	<b>13.96</b>	<b>-2.13</b>

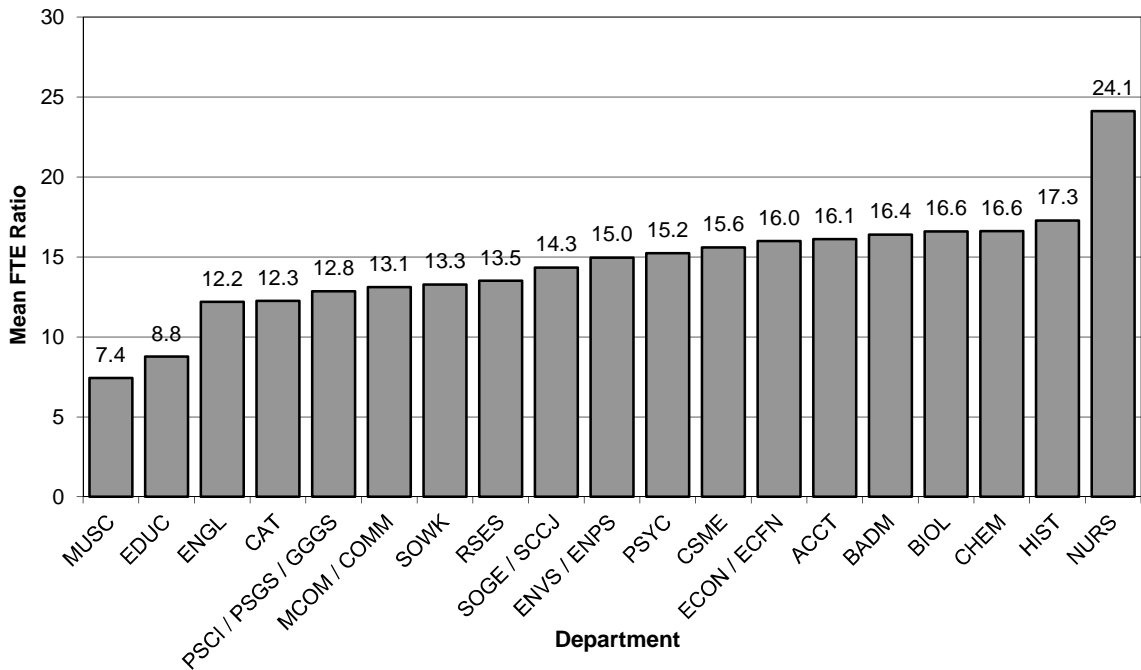
**General Explanation/Definitions.**

1. The **ratio** is obtained by dividing the student FTE by the faculty FTE.
2. One faculty **FTE** (full-time equivalent) equals 12 hours of instructional responsibility and one student FTE equals 15 credit hours.
3. The annual **change** is the current year's ratio minus the prior year's ratio.
4. The **mean ratio** is the sum of the annual ratios divided by the number of years for which data are presented (five years).
5. The **change in ratio** is the current year's ratio minus the first year's ratio.
6. Numbers include undergraduate instruction only.
7. As of Fall 2018, Stretch English and Stretch Mathematics courses are housed in English and CSME, respectively. For Fall 2017 and earlier, the FTE for these courses have been added to the English and CSME FTE totals.

**Graph 8A: Change in Ratios  
(FTE Students: FTE Faculty), 2015-2019**  
(from Table 8)



**Graph 8B: Mean Ratios  
(FTE Students: FTE Faculty), 2015-2019**  
(from Table 8)





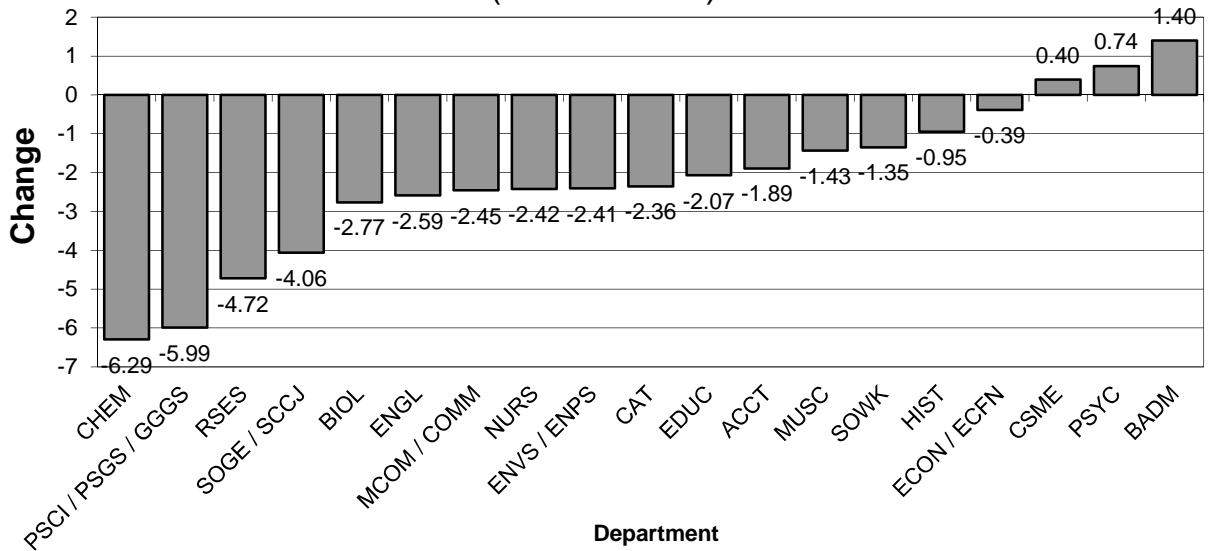
**Table 9. Ratios of Student FTE Generated by Full-Time Faculty**

Department	Fall 2015			Fall 2016			Fall 2017			Fall 2018			Fall 2019			Fall 2015-2019			
	Ratio	% Chg	A. Chg.	Ratio	% Chg	A. Chg.	Ratio	% Chg	A. Chg.	Ratio	% Chg	A. Chg.	F-FTE	S-FTE	Ratio	% Chg	A. Chg.	Mean Ratio	Change in Ratio
CAT	11.93	7.5%	0.83	10.66	-10.7%	-1.27	10.49	-1.6%	-0.17	10.66	1.6%	0.17	7.75	74.20	9.57	-10.2%	-1.09	10.66	-2.36
MCOM / COMM	12.71	-11.1%	-1.59	11.36	-10.6%	-1.35	13.40	18.0%	2.04	12.29	-8.3%	-1.11	4.50	46.13	10.25	-16.6%	-2.04	12.00	-2.45
ENGL (including stretch)	13.47	1.3%	0.17	12.99	-3.6%	-0.48	11.35	-12.7%	-1.64	11.47	1.1%	0.12	15.08	164.13	10.88	-5.1%	-0.58	12.03	-2.59
HIST	16.67	-12.7%	-2.43	14.67	-12.0%	-1.99	17.32	18.0%	2.65	17.11	-1.2%	-0.21	4.05	63.67	15.72	-8.1%	-1.39	16.30	-0.95
MUSC	9.59	-14.7%	-1.65	10.27	7.1%	0.68	8.78	-14.6%	-1.49	8.81	0.4%	0.03	6.23	50.80	8.15	-7.4%	-0.66	9.12	-1.43
Arts & Humanities	12.93	-2.0%	-0.27	12.22	-5.5%	-0.71	11.67	-4.5%	-0.55	11.79	1.0%	0.12	37.61	398.93	10.61	-10.0%	-1.18	11.84	-2.32
PSCI / PSGS / GGGS	16.51	2.9%	0.46	12.52	-24.2%	-3.99	12.46	-0.5%	-0.06	9.93	-20.3%	-2.52	4.33	45.53	10.52	5.9%	0.58	12.39	-5.99
PSYC	12.78	-13.8%	-2.05	13.14	2.8%	0.36	12.40	-5.6%	-0.73	15.79	27.3%	3.39	5.75	77.73	13.52	-14.4%	-2.28	13.53	0.74
SOWK	11.91	-10.5%	-1.40	13.67	14.7%	1.76	14.93	9.3%	1.27	12.51	-16.2%	-2.43	2.50	26.40	10.56	-15.6%	-1.95	12.72	-1.35
SOGE / SCCJ	17.47	-7.2%	-1.35	13.26	-24.1%	-4.21	13.26	0.0%	0.00	12.18	-8.1%	-1.08	5.25	70.40	13.41	10.1%	1.23	13.91	-4.06
Social & Behavioral Sci.	14.98	-7.2%	-1.16	13.10	-12.5%	-1.88	13.04	-0.5%	-0.06	12.66	-2.9%	-0.38	17.83	220.06	12.34	-2.5%	-0.32	13.22	-2.64
Arts Hum Soc Sci	13.67	-4.2%	-0.59	12.51	-8.5%	-1.16	12.12	-3.2%	-0.40	12.05	-0.5%	-0.06	55.44	618.99	11.17	-7.4%	-0.89	12.31	-2.51
BADM	15.76	7.6%	1.12	14.60	-7.3%	-1.15	15.00	2.7%	0.40	17.33	15.6%	2.33	4.50	77.20	17.16	-1.0%	-0.18	15.97	1.40
ECON / ECFN	16.14	13.0%	1.86	15.56	-3.6%	-0.59	15.81	1.6%	0.26	15.01	-5.1%	-0.80	4.00	63.00	15.75	4.9%	0.74	15.65	-0.39
ACCT	18.47	13.1%	2.14	16.80	-9.1%	-1.67	14.98	-10.8%	-1.82	15.36	2.5%	37.8%	2.75	45.60	16.58	8.0%	1.22	16.44	-1.89
Business	16.53	11.0%	1.64	15.55	-5.9%	-0.97	15.31	-1.6%	-0.24	15.92	4.0%	0.61	11.25	185.80	16.52	3.7%	0.59	15.97	-0.01
BIOL	17.22	10.1%	1.57	16.04	-6.9%	-1.18	14.72	-8.2%	-1.32	14.97	1.7%	0.25	10.19	147.27	14.45	-3.5%	-0.52	15.48	-2.77
CHEM	20.20	2.3%	0.45	17.27	-14.5%	-2.93	17.31	0.2%	0.04	15.71	-9.2%	-1.60	5.55	77.20	13.91	-11.5%	-1.80	16.88	-6.29
CSME (including stretch)	13.97	-4.2%	-0.61	13.06	-6.5%	-0.91	13.42	2.8%	0.36	15.47	15.3%	2.05	14.54	208.93	14.37	-7.1%	-1.10	14.06	0.40
ENVS / ENPS	17.24	6.6%	1.07	15.32	-11.2%	-1.92	14.63	-4.5%	-0.68	13.73	-6.2%	-0.91	5.60	83.07	14.83	8.1%	1.11	15.15	-2.41
Sci Tech Engr Math	16.37	2.9%	0.46	14.88	-9.1%	-1.49	14.52	-2.4%	-0.36	15.04	3.6%	0.52	35.88	516.47	14.39	-4.3%	-0.65	15.04	-1.98
NURS	27.05	11.5%	2.79	28.68	6.0%	1.64	27.23	-5.1%	-1.45	30.55	12.2%	3.32	5.42	133.47	24.63	-19.4%	-5.92	27.63	-2.42
EDUC	10.22	-12.4%	-1.44	9.33	-8.7%	-0.89	8.82	-5.5%	-0.51	8.30	-5.8%	-0.52	10.86	88.53	8.15	-1.8%	-0.15	8.96	-2.07
RSES (incl. FACS)	15.69	2.7%	0.41	11.50	-26.7%	-4.19	13.54	17.7%	2.03	11.93	-11.9%	-1.61	17.00	186.47	10.97	-8.0%	-0.96	12.73	-4.72
Nurs Educ Health Sci	16.36	1.6%	0.25	13.91	-15.0%	-2.45	14.13	1.6%	0.22	13.67	-3.2%	-0.46	33.28	408.47	12.27	-10.2%	-1.40	14.07	-4.08
<b>Shepherd University</b>	<b>15.17</b>	<b>0.3%</b>	<b>0.04</b>	<b>13.66</b>	<b>-9.9%</b>	<b>-1.51</b>	<b>13.45</b>	<b>-1.6%</b>	<b>-0.22</b>	<b>13.55</b>	<b>0.8%</b>	<b>0.10</b>	<b>135.85</b>	<b>1729.73</b>	<b>12.73</b>	<b>-6.1%</b>	<b>-0.82</b>	<b>13.72</b>	<b>-2.44</b>

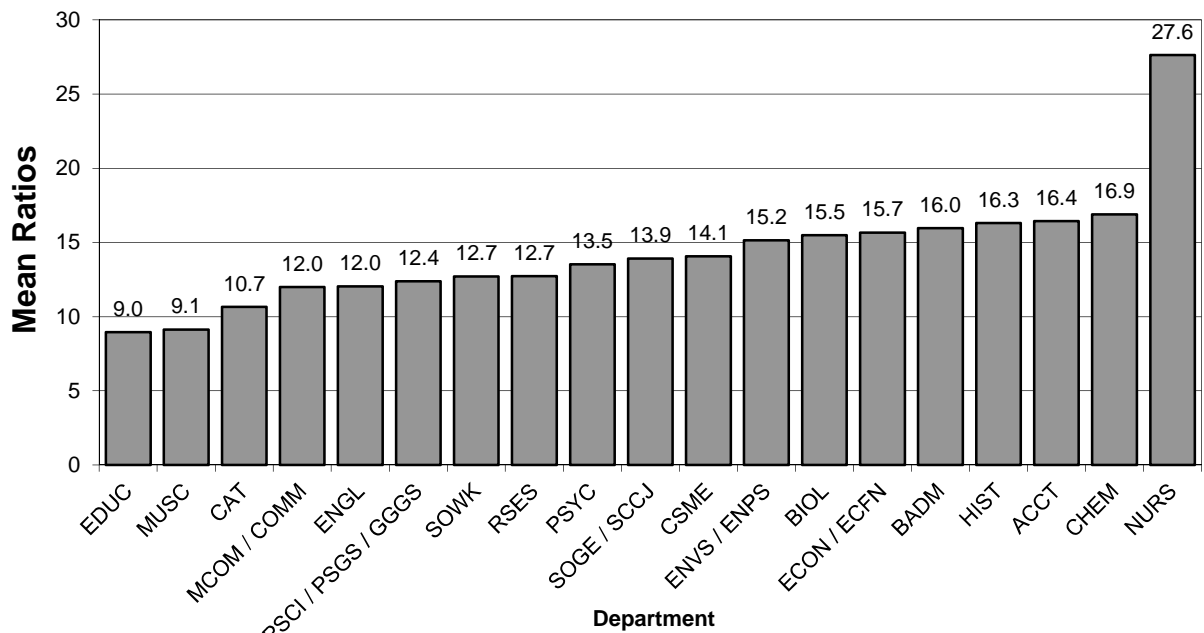
**General Explanation/Definitions.**

1. The **ratio** is obtained by dividing the student FTE generated by full-time faculty by the full-time faculty FTE. For full-time faculty, one faculty FTE (full-time equivalent) equals 12 hours of instructional responsibility and one student FTE equals 15 credit hours.
2. The **% change** is the difference between the ratio in two consecutive years divided by the ratio of the earlier year.
3. The **annual change** is the current year's ratio minus the prior year's ratio.
4. The **mean ratio** is the sum of the annual ratios divided by the number of years for which data are presented (five years).
5. The **change in ratio** is the current year's ratio minus the first year's ratio.
6. Numbers include undergraduate instruction only.
7. As of Fall 2018, Stretch English and Stretch Mathematics courses are housed in English and CSME, respectively. For Fall 2017 and earlier, the FTE for these courses have been added to the English and CSME FTE totals.

**Graph 9A: Change in FTE Ratios  
(Student FTE: Faculty FTE for Full-Time Faculty),  
2015-2019  
(from Table 9)**



**Graph 9B: Mean FTE Ratios  
Student FTE: Faculty FTE for Full-Time Faculty),  
2015-2019  
(from Table 9)**



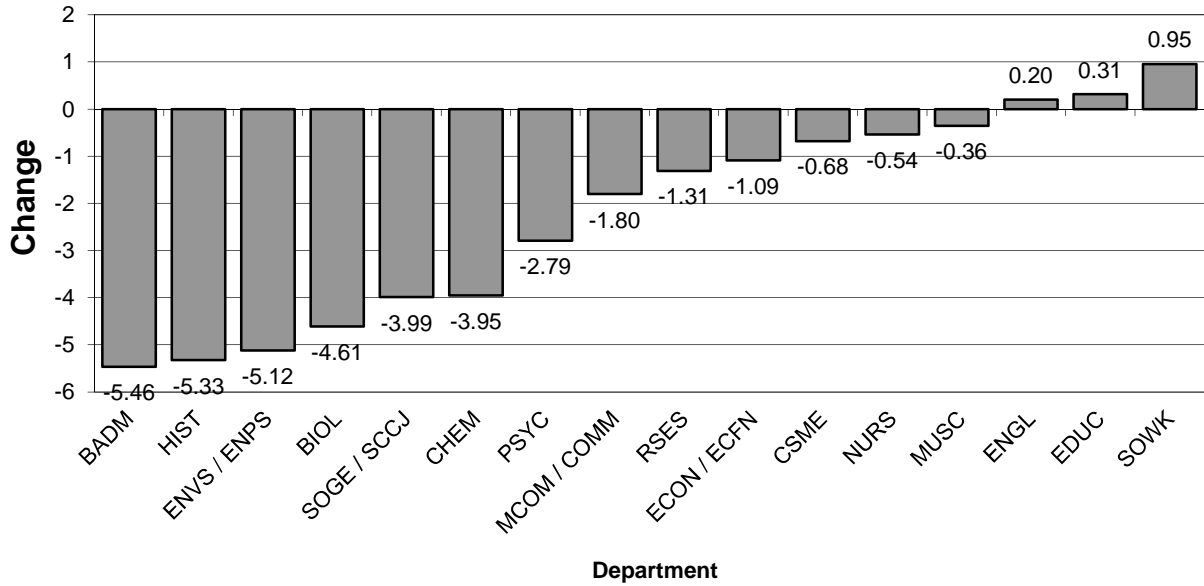
**Table 10. Ratios of Student FTE Generated by Part-Time Faculty Only to Part-Time Faculty FTE**

Department	Fall 2015			Fall 2016			Fall 2017			Fall 2018			Fall 2019					Fall 2015-2019	
	Ratio	% Chg	A. Chg.	Ratio	% Chg	A. Chg.	Ratio	% Chg	A. Chg.	Ratio	% Chg	A. Chg.	F-FTE	S-FTE	Ratio	% Chg	A. Chg.	Mean Ratio	Change in Ratio
CAT	13.85	-13.1%	-2.08	16.03	15.8%	2.18	15.46	-3.5%	-0.57	14.34	-7.3%	-1.12	4.25	66.60	15.67	9.3%	1.33	15.07	1.82
MCOM / COMM	14.83	14.3%	1.86	16.00	7.9%	1.17	14.62	-8.6%	-1.38	14.83	1.5%	0.21	3.50	45.60	13.03	-12.2%	-1.80	14.66	-1.80
ENGL (including stretch)	13.18	-6.5%	-0.92	12.56	-4.7%	-0.62	12.61	0.4%	0.05	12.04	-4.5%	-0.57	3.75	50.20	13.39	11.2%	1.35	12.76	0.20
HIST	22.49	20.0%	3.75	19.51	-13.3%	-2.99	15.98	-18.1%	-3.53	19.52	22.1%	3.54	3.25	55.80	17.17	-12.0%	-2.35	18.93	-5.33
MUSC	6.02	15.2%	0.79	6.36	5.7%	0.34	6.16	-3.2%	-0.20	5.70	-7.4%	-0.46	5.13	29.03	5.66	-0.8%	-0.04	5.98	-0.36
Arts & Humanities	12.84	-1.8%	-0.23	12.41	-3.4%	-0.43	12.11	-2.4%	-0.29	11.64	-3.9%	-0.47	19.88	247.23	12.44	6.8%	0.80	12.29	-0.41
PSCI / PSGS / GGGS	N/A	N/A	N/A	13.60	N/A	N/A	15.80	16.2%	2.20	9.60	-39.2%	-6.20	2.24	33.20	14.82	54.4%	5.22	13.46	N/A
PSYC	19.71	13.2%	2.30	19.49	-1.2%	-0.23	15.62	-19.8%	-3.86	17.97	15.0%	2.35	3.38	57.20	16.92	-5.8%	-1.05	17.94	-2.79
SOWK	14.40	33.3%	3.60	42.40	194.4%	28.00	13.60	-67.9%	-28.80	9.11	-33.0%	-4.49	0.99	15.20	15.35	68.6%	6.25	18.97	0.95
SOGE / SCCJ	17.73	-15.2%	-3.19	16.00	-9.8%	-1.73	13.85	-13.4%	-2.15	13.20	-4.7%	-0.65	2.75	37.80	13.75	4.1%	0.55	14.91	-3.99
Social & Behavioral Sci.	18.49	2.7%	0.48	17.84	-3.5%	-0.65	14.75	-17.3%	-3.09	13.96	-5.4%	-0.79	9.36	143.40	15.32	9.7%	1.36	16.07	-3.17
Arts Hum Soc Sci	13.87	-0.9%	-0.13	13.85	-0.2%	-0.03	12.97	-6.3%	-0.88	12.45	-4.0%	-0.52	29.24	390.63	13.36	7.3%	0.91	13.30	-0.51
BADM	20.24	39.3%	5.71	18.09	-10.6%	-2.15	16.95	-6.3%	-1.14	15.16	-10.6%	-1.79	4.25	62.80	14.78	-2.5%	-0.39	17.04	-5.46
ECON / ECFN	19.33	-3.4%	-0.67	16.00	-17.2%	-3.33	14.93	-6.7%	-1.07	16.40	9.8%	1.47	1.25	22.80	18.24	11.2%	1.84	16.98	-1.09
ACCT	11.20	-44.0%	-8.80	5.60	-50.0%	-5.60	N/A	N/A	N/A	20.00	N/A	N/A	0.00	0.00	N/A	N/A	N/A	12.27	N/A
Business	18.93	13.2%	2.21	17.09	-9.7%	-1.84	16.50	-3.4%	-0.58	15.60	-5.5%	-0.90	5.50	85.60	15.56	-0.2%	-0.04	16.74	-3.36
BIOL	21.94	-9.2%	-2.23	20.32	-7.4%	-1.62	20.59	1.3%	0.27	15.64	-24.0%	-4.95	2.00	34.67	17.34	10.8%	1.69	19.17	-4.61
CHEM	16.98	-7.9%	-1.46	16.50	-2.8%	-0.48	18.80	13.9%	2.30	6.88	-63.4%	-11.92	0.42	5.47	13.02	89.3%	6.15	14.44	-3.95
CSME (Including stretch)	18.61	-2.5%	-0.47	19.51	4.8%	0.90	20.43	4.7%	0.92	18.92	-7.4%	-1.51	4.25	76.20	17.93	-5.2%	-0.99	19.08	-0.68
ENVS / ENPS	16.00	-10.3%	-1.84	15.52	-3.0%	-0.48	14.96	-3.6%	-0.56	12.53	-16.2%	-2.43	1.25	13.60	10.88	-13.2%	-1.65	13.98	-5.12
Sci Tech Engr Math	18.91	-4.3%	-0.85	18.73	-0.9%	-0.17	19.45	3.9%	0.72	16.96	-12.8%	-2.50	7.92	129.94	16.41	-3.2%	-0.55	18.09	-2.50
NURS	7.47	-74.6%	-21.91	9.45	26.5%	1.98	6.02	-36.3%	-3.43	7.20	19.7%	1.18	1.00	6.93	6.93	-3.8%	-0.27	7.41	-0.54
EDUC	8.14	-23.0%	-2.43	7.41	-8.9%	-0.73	6.00	-19.1%	-1.41	9.24	54.0%	3.24	1.83	15.47	8.45	-8.5%	-0.79	7.85	0.31
RSES (incl. FACS)	15.55	-1.0%	-0.15	15.47	-0.5%	-0.08	15.19	-1.8%	-0.28	13.97	-8.0%	-1.22	5.92	84.27	14.23	1.9%	0.27	14.88	-1.31
Nurs Educ Health Sci	14.07	-9.9%	-1.55	13.91	-1.2%	-0.16	12.88	-7.4%	-1.03	12.87	-0.1%	-0.01	8.75	106.67	12.19	-5.3%	-0.68	13.18	-1.88
<b>Shepherd University</b>	<b>15.16</b>	<b>-2.2%</b>	<b>-0.34</b>	<b>15.02</b>	<b>-1.0%</b>	<b>-0.14</b>	<b>14.65</b>	<b>-2.5%</b>	<b>-0.37</b>	<b>13.60</b>	<b>-7.1%</b>	<b>-1.05</b>	<b>51.41</b>	<b>712.84</b>	<b>13.87</b>	<b>1.9%</b>	<b>0.26</b>	<b>14.46</b>	<b>-1.30</b>

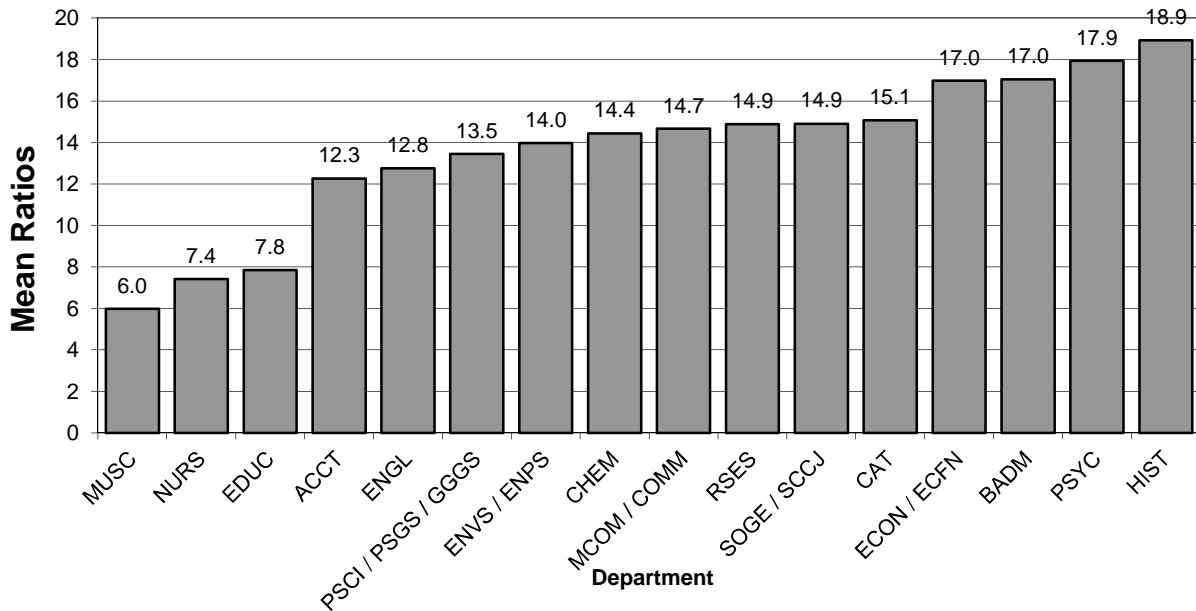
**General Explanation/Definitions.**

1. The **ratio** is obtained by dividing the student FTE generated by part-time faculty by the part-time faculty FTE. For part-time faculty, one faculty FTE (full-time equivalent) equals 15 hours of instructional responsibility and one student FTE equals 15 credit hours.
2. The **% change** is the difference between the ratio in two consecutive years divided by the ratio of the earlier year.
3. The **annual change** is the current year's ratio minus the prior year's ratio.
4. The **mean ratio** is the sum of the annual ratios divided by the number of years for which data are presented (five years).
5. The **change in ratio** is the current year's ratio minus the first year's ratio.
6. Numbers include undergraduate instruction only.
7. As of Fall 2018, Stretch English and Stretch Mathematics courses are housed in English and CSME, respectively. For Fall 2017 and earlier, the FTE for these courses have been added to the English and CSME FTE totals.

**Graph 10A: Change in FTE Ratios  
(Student FTE: Faculty FTE for Part-Time Faculty),  
2015-2019  
(from Table 10)**



**Graph 10B: Mean FTE Ratios  
(Student FTE: Faculty FTE for Part-Time Faculty),  
2015-2019  
(from Table 10)**



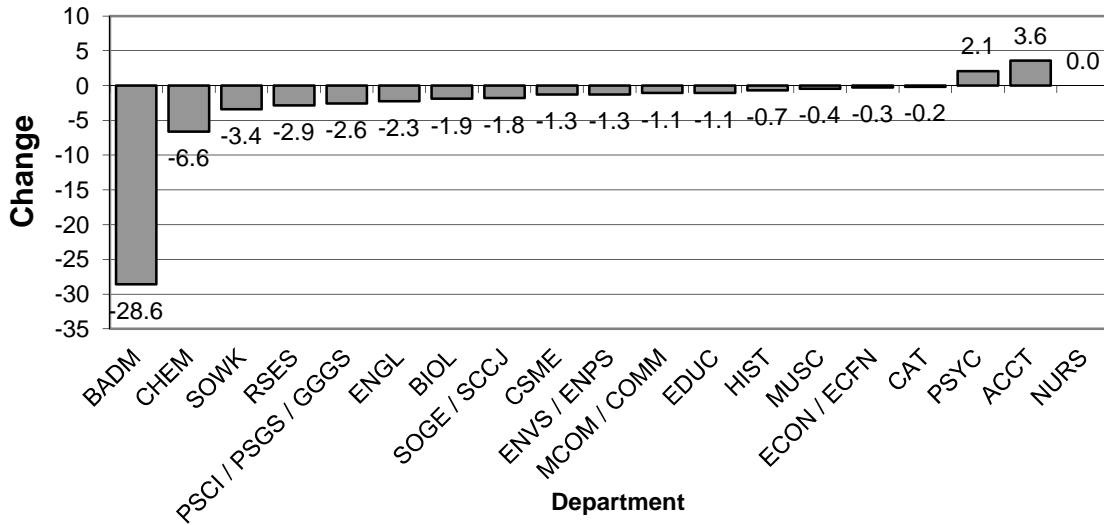
**Table 11. Student-to-Faculty FTE Ratios in Lower Level Courses**

Department	Fall 2015			Fall 2016			Fall 2017			Fall 2018			Fall 2019					Fall 2015-19	
	Ratio	% Chg.	A. Chg.	Ratio	% Chg.	A. Chg.	Ratio	% Chg.	A. Chg.	Ratio	% Chg.	A. Chg.	Faculty FTE	Student FTE	Ratio	% Chg.	A. Chg.	Mean Ratio	Change in Ratio
CAT	13.92	-9.4%	-1.45	15.11	8.5%	1.19	14.43	-4.5%	-0.68	14.95	3.6%	0.52	6.60	90.80	13.76	-8.0%	-1.19	14.43	-0.16
MCOM / COMM	15.80	12.0%	1.69	15.60	-1.3%	-0.20	15.93	2.1%	0.33	15.45	-3.0%	-0.48	3.00	44.20	14.73	-4.6%	-0.71	15.50	-1.07
ENGL (including stretch)	13.96	-3.9%	-0.56	13.47	-3.5%	-0.49	12.57	-6.6%	-0.89	12.03	-4.4%	-0.55	15.08	176.53	11.71	-2.7%	-0.32	12.75	-2.26
HIST	21.44	12.9%	2.46	18.86	-12.1%	-2.59	20.05	6.3%	1.19	22.38	11.7%	2.34	3.83	79.47	20.75	-7.3%	-1.63	20.70	-0.69
MUSC	9.73	-2.7%	-0.27	8.68	-10.8%	-1.05	9.17	5.7%	0.49	8.34	-9.1%	-0.83	5.50	51.07	9.29	11.4%	0.95	9.04	-0.44
Arts & Humanities	14.62	-0.1%	-0.01	14.03	-4.1%	-0.59	13.60	-3.0%	-0.42	13.35	-1.9%	-0.26	34.01	442.07	13.00	-2.6%	-0.35	13.72	-1.62
PSYC / PSGS / GGGS	18.33	18.2%	2.82	17.40	-5.1%	-0.93	16.14	-7.3%	-1.26	11.28	-30.1%	-4.85	3.82	60.13	15.74	39.5%	4.46	15.78	-2.59
PSYC	14.86	-8.1%	-1.32	14.82	-0.3%	-0.04	14.82	0.0%	0.00	18.94	27.8%	4.12	5.04	85.47	16.96	-10.5%	-1.98	16.08	2.10
SOWK	16.36	65.1%	6.45	17.97	9.8%	1.61	10.52	-41.5%	-7.45	10.52	0.0%	0.00	0.57	7.40	12.98	23.5%	2.47	13.67	-3.38
SOGE / SCCJ	20.21	-9.8%	-2.19	19.24	-4.8%	-0.97	18.78	-2.4%	-0.46	18.61	-0.9%	-0.17	3.00	55.20	18.40	-1.1%	-0.21	19.05	-1.81
Social & Behavioral Sci.	17.55	-3.4%	-0.63	17.04	-2.9%	-0.50	16.47	-3.3%	-0.57	16.77	1.8%	0.30	12.43	208.20	16.75	-0.1%	-0.02	16.92	-0.80
Arts Hum Soc Sci	15.35	-1.0%	-0.15	14.75	-3.9%	-0.59	14.34	-2.8%	-0.42	14.20	-0.9%	-0.13	46.44	650.27	14.00	-1.4%	-0.20	14.53	-1.34
BADM	48.80	35.6%	12.80	32.00	-34.4%	-16.80	26.80	-16.3%	-5.20	31.20	16.4%	4.40	1.00	20.20	20.20	-35.3%	-11.00	31.80	-28.60
ECON / ECFN	18.24	-1.4%	-0.26	16.70	-8.4%	-1.54	16.65	-0.3%	-0.05	17.50	5.1%	0.85	3.75	67.40	17.97	2.7%	0.47	17.41	-0.26
ACCT	15.60	-10.7%	-1.87	13.12	-15.9%	-2.48	19.60	49.4%	6.48	18.60	-5.1%	-1.00	1.00	19.20	19.20	3.2%	0.60	17.22	3.60
Business	18.91	-0.4%	-0.08	16.58	-12.3%	-2.33	18.11	9.2%	1.53	18.95	4.6%	0.84	5.75	106.80	18.57	-2.0%	-0.37	18.22	-0.33
BIOL	19.68	4.0%	0.76	18.04	-8.3%	-1.64	19.44	7.8%	1.40	17.82	-8.3%	-1.62	7.17	127.47	17.78	-0.2%	-0.04	18.55	-1.90
CHEM	21.02	6.9%	1.36	17.73	-15.7%	-3.29	19.25	8.6%	1.52	16.15	-16.1%	-3.10	3.33	48.00	14.41	-10.7%	-1.74	17.71	-6.61
CSME (including stretch)	17.71	-0.6%	-0.11	17.11	-3.4%	-0.60	17.12	0.1%	0.01	17.94	4.8%	0.82	11.67	191.53	16.41	-8.5%	-1.53	17.26	-1.30
ENVS / ENPS	16.62	6.7%	1.05	15.83	-4.8%	-0.79	14.91	-5.8%	-0.92	16.26	9.0%	1.34	3.67	56.33	15.35	-5.6%	-0.91	15.79	-1.27
Sci Tech Engr Math	18.56	3.2%	0.57	17.23	-7.2%	-1.33	17.76	3.1%	0.53	17.45	-1.8%	-0.31	25.84	423.33	16.38	-6.1%	-1.06	17.48	-2.18
NURS	N/A	N/A	N/A	N/A	N/A	N/A	N/A	N/A	N/A	N/A	N/A	N/A	0.00	0.00	N/A	N/A	N/A	N/A	N/A
EDUC	13.15	-16.4%	-2.58	11.07	-15.9%	-2.09	12.08	9.1%	1.01	11.05	-8.5%	-1.03	1.08	13.07	12.10	9.6%	1.06	11.89	-1.05
RSES (incl. FACS)	18.56	-0.4%	-0.07	15.88	-14.5%	-2.68	17.64	11.1%	1.76	17.01	-3.6%	-0.63	9.92	155.73	15.70	-7.7%	-1.31	16.96	-2.86
Nurs Educ Health Sci	18.03	-0.9%	-0.17	15.40	-14.6%	-2.63	17.15	11.4%	1.75	16.49	-3.8%	-0.66	11.00	168.80	15.35	-7.0%	-1.15	16.48	-2.68
<b>Shepherd University</b>	<b>16.82</b>	<b>0.3%</b>	<b>0.05</b>	<b>15.66</b>	<b>-6.9%</b>	<b>-1.16</b>	<b>15.93</b>	<b>1.7%</b>	<b>0.26</b>	<b>15.73</b>	<b>-1.3%</b>	<b>-0.20</b>	<b>89.03</b>	<b>1349.20</b>	<b>15.15</b>	<b>-3.6%</b>	<b>-0.57</b>	<b>15.86</b>	<b>-1.67</b>

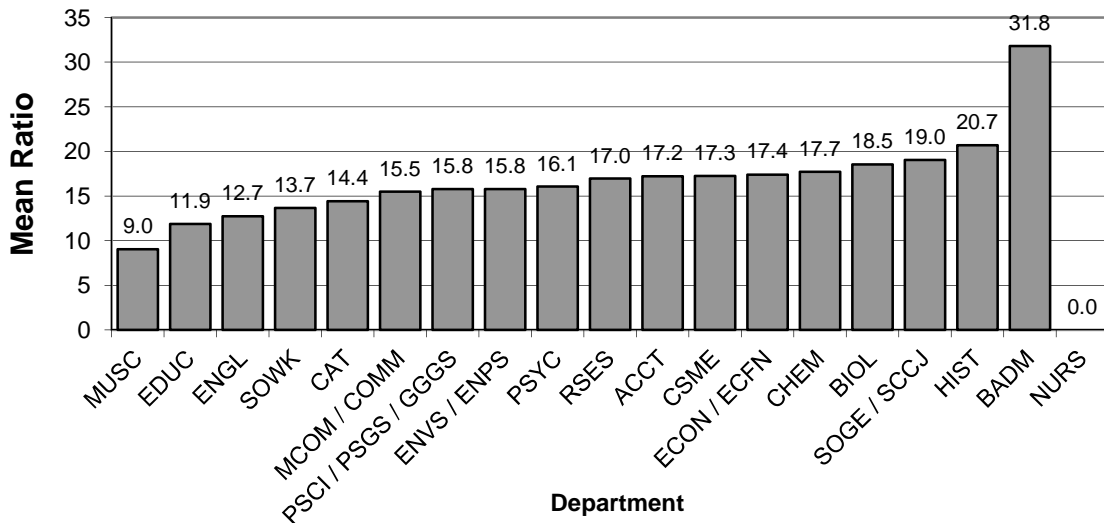
**General Explanation/Definitions.**

1. The **ratio** is obtained by dividing the student FTE by the faculty FTE .
2. **Lower level** includes 100 and 200 level courses.
3. The **% change** is the difference between the ratio in two consecutive years divided by the ratio of the earlier year.
4. The **annual change** (A. Chg.) is the current year's ratio minus the prior year's ratio.
5. The **mean ratio** is the sum of the annual ratios divided by the number of years for which data are presented (five years).
6. The **change in ratio** is the current year's ratio minus the earliest year's ratio.
7. Numbers include undergraduate instruction only.
8. As of Fall 2018, Stretch English and Stretch Mathematics courses are housed in English and CSME, respectively. For Fall 2017 and earlier, the FTE for these courses have been added to the English and CSME FTE totals.

**Graph 11A: Change in Student FTE to Faculty FTE Ratios in Lower Level Courses, 2015 - 2019**  
(from Table 11)



**Graph 11B: Mean Student FTE to Faculty FTE Ratios in Lower Level Courses, 2015 - 2019**  
(from Table 11)



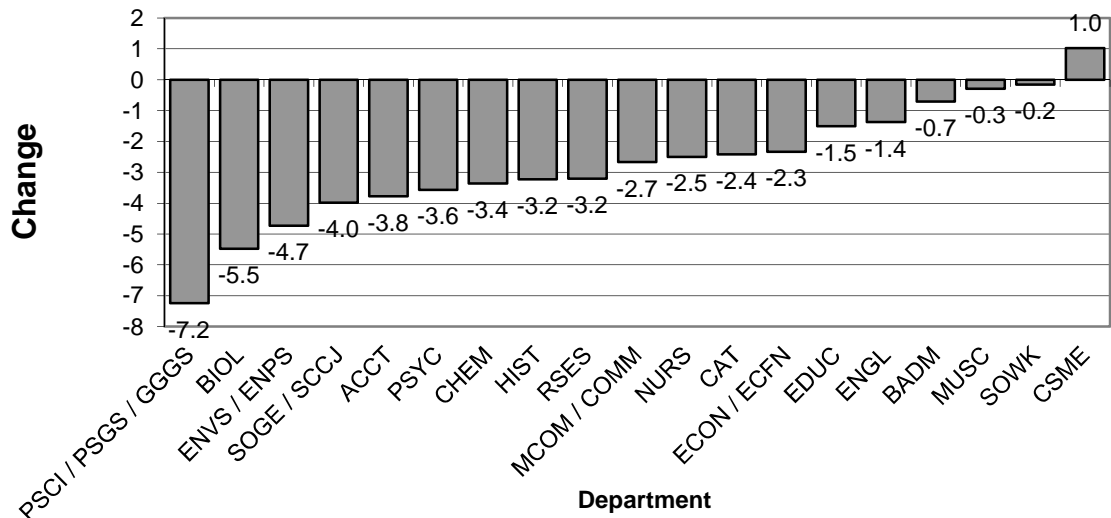
**Table 12. Student-to-Faculty FTE Ratios in Upper Level Courses**

Department	Fall 2015			Fall 2016			Fall 2017			Fall 2018			Fall 2019			Fall 2015-2019			
	Ratio	% Chg.	A. Chg.	Ratio	% Chg.	A. Chg.	Ratio	% Chg.	A. Chg.	Ratio	% Chg.	A. Chg.	Faculty FTE	Student FTE	Ratio	% Chg.	A. Chg.	Mean Ratio	Change in Ratio
CAT	11.68	10.0%	1.06	9.61	-17.7%	-2.06	9.24	-3.9%	-0.37	8.44	-8.7%	-0.80	5.40	50.00	9.26	9.7%	0.82	9.65	-2.42
MCOM / COMM	12.18	-9.0%	-1.20	11.84	-2.8%	-0.34	12.02	1.5%	0.18	11.79	-1.9%	-0.23	5.00	47.53	9.51	-19.4%	-2.29	11.47	-2.67
ENGL (including stretch)	11.45	8.2%	0.87	10.61	-7.4%	-0.85	8.69	-18.0%	-1.91	10.13	16.6%	1.44	3.75	37.80	10.08	-0.5%	-0.05	10.19	-1.37
HIST	14.75	-21.1%	-3.95	11.47	-22.3%	-3.29	12.24	6.7%	0.77	11.76	-3.9%	-0.48	3.47	40.00	11.53	-2.0%	-0.23	12.35	-3.23
MUSC	5.21	-15.6%	-0.96	7.09	35.9%	1.87	6.36	-10.3%	-0.73	6.06	-4.6%	-0.29	5.85	28.77	4.92	-18.9%	-1.15	5.93	-0.29
Arts & Humanities	10.24	-5.3%	-0.57	9.77	-4.5%	-0.47	9.08	-7.1%	-0.69	9.19	1.2%	0.11	23.47	204.10	8.70	-5.4%	-0.49	9.39	-1.54
PSCI / PSGS / GGGS	14.00	-9.7%	-1.50	9.53	-31.9%	-4.47	10.25	7.5%	0.71	8.07	-21.2%	-2.18	2.75	18.60	6.76	-16.2%	-1.31	9.72	-7.24
PSYC	15.69	2.4%	0.36	16.35	4.2%	0.66	12.76	-22.0%	-3.60	14.68	15.1%	1.92	4.08	49.47	12.13	-17.4%	-2.55	14.32	-3.56
SOWK	11.87	-10.8%	-1.44	16.19	36.4%	4.32	14.98	-7.5%	-1.22	11.38	-24.0%	-3.60	2.92	34.20	11.71	2.9%	0.34	13.23	-0.16
SOGE / SCCJ	14.59	-10.8%	-1.77	11.04	-24.3%	-3.55	9.44	-14.5%	-1.60	7.76	-17.8%	-1.68	5.00	53.00	10.60	36.7%	2.84	10.68	-3.99
Social & Behavioral Sci.	14.30	-6.2%	-0.94	12.96	-9.4%	-1.34	11.55	-10.9%	-1.41	10.46	-9.4%	-1.09	14.75	155.27	10.53	0.6%	0.07	11.96	-3.77
Arts Hum Soc Sci	11.63	-5.8%	-0.72	11.00	-5.4%	-0.63	10.10	-8.2%	-0.90	9.71	-3.9%	-0.39	38.22	359.37	9.40	-3.2%	-0.31	10.37	-2.23
BADM	16.17	16.3%	2.26	16.04	-0.8%	-0.13	15.50	-3.4%	-0.55	15.18	-2.1%	-0.32	7.75	119.80	15.46	1.9%	0.28	15.67	-0.71
ECON / ECFN	14.60	33.2%	3.64	13.60	-6.8%	-1.00	13.14	-3.4%	-0.46	10.51	-20.0%	-2.63	1.50	18.40	12.27	16.7%	1.75	12.82	-2.33
ACCT	18.86	15.0%	2.46	17.83	-5.5%	-1.03	12.34	-30.8%	-5.49	14.17	14.8%	1.83	1.75	26.40	15.09	6.5%	0.91	15.66	-3.77
Business	16.31	19.0%	2.60	15.89	-2.6%	-0.42	14.71	-7.4%	-1.18	14.35	-2.4%	-0.36	11.00	164.60	14.96	4.3%	0.61	15.25	-1.35
BIOL	16.31	12.6%	1.82	15.91	-2.5%	-0.40	12.64	-20.6%	-3.27	10.95	-13.3%	-1.68	5.03	54.47	10.83	-1.1%	-0.12	13.33	-5.48
CHEM	16.49	-12.2%	-2.29	15.72	-4.7%	-0.77	14.19	-9.8%	-1.53	13.60	-4.1%	-0.58	2.64	34.67	13.13	-3.5%	-0.47	14.63	-3.36
CSME	12.10	-3.9%	-0.50	11.91	-1.6%	-0.19	11.98	0.6%	0.07	13.72	14.5%	1.74	7.13	93.60	13.13	-4.3%	-0.59	12.57	1.03
ENVS / ENPS	17.41	-3.4%	-0.62	14.58	-16.3%	-2.83	14.51	-0.5%	-0.07	11.37	-21.6%	-3.14	3.18	40.33	12.68	11.5%	1.31	14.11	-4.73
Sci Tech Engr Math	14.69	-2.2%	-0.32	13.85	-5.7%	-0.83	12.94	-6.6%	-0.91	12.41	-4.1%	-0.53	17.98	223.07	12.41	0.0%	0.00	13.26	-2.28
NURS	24.38	-5.6%	-1.44	24.25	-0.5%	-0.13	23.05	-4.9%	-1.20	27.00	17.1%	3.95	6.42	140.40	21.87	-19.0%	-5.13	24.11	-2.51
EDUC	9.33	-13.5%	-1.46	8.68	-7.0%	-0.65	8.13	-6.4%	-0.55	8.11	-0.2%	-0.02	11.61	90.93	7.83	-3.4%	-0.28	8.42	-1.50
RSES (incl. FACS)	12.05	-1.1%	-0.07	11.28	-6.4%	-0.77	10.92	-3.2%	-0.36	9.09	-16.7%	-1.83	13.00	115.00	8.85	-2.7%	-0.25	10.44	-3.20
Nurs Educ Health Sci	14.06	-4.8%	-0.71	13.20	-6.1%	-0.86	12.44	-5.8%	-0.76	12.35	-0.7%	-0.08	31.03	346.33	11.16	-9.7%	-1.19	12.64	-2.90
Shepherd University	13.41	-1.9%	-0.27	12.70	-5.3%	-0.70	11.86	-6.6%	-0.84	11.59	-2.3%	-0.27	98.23	1093.37	11.13	-4.0%	-0.46	12.14	-2.28

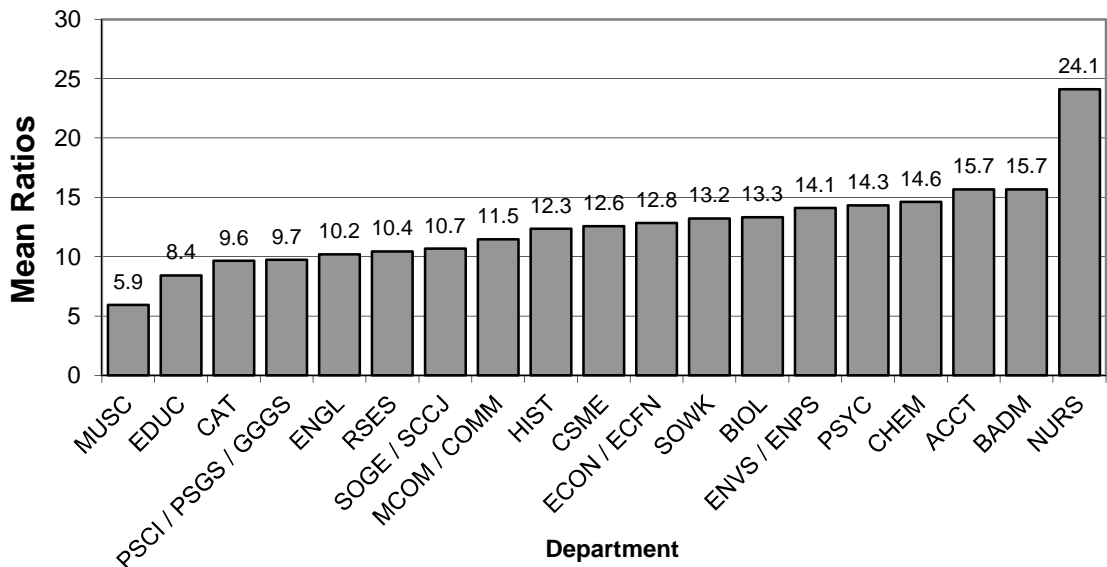
**General Explanation/Definitions.**

1. The **ratio** is obtained by dividing the student FTE by the faculty FTE.
2. **Upper level** includes 300 and 400 level courses.
3. The **% change** is the difference between the ratio in two consecutive years divided by the ratio of the earlier year.
4. The **annual change** (A. Chg.) is the current year's ratio minus the prior year's ratio.
5. The **mean ratio** is the sum of the annual ratios divided by the number of years for which data are presented (five years).
6. The **change in ratio** is the current year's ratio minus the earliest year's ratio.
7. Numbers include undergraduate instruction only.

**Graph 12A: Change in Student FTE to Faculty FTE Ratios in Upper Level Courses, 2015 - 2019**  
(from Table 12)



**Graph 12B: Mean Student FTE to Faculty FTE Ratios in Upper Level Courses, 2015 - 2019**  
(from Table 12)



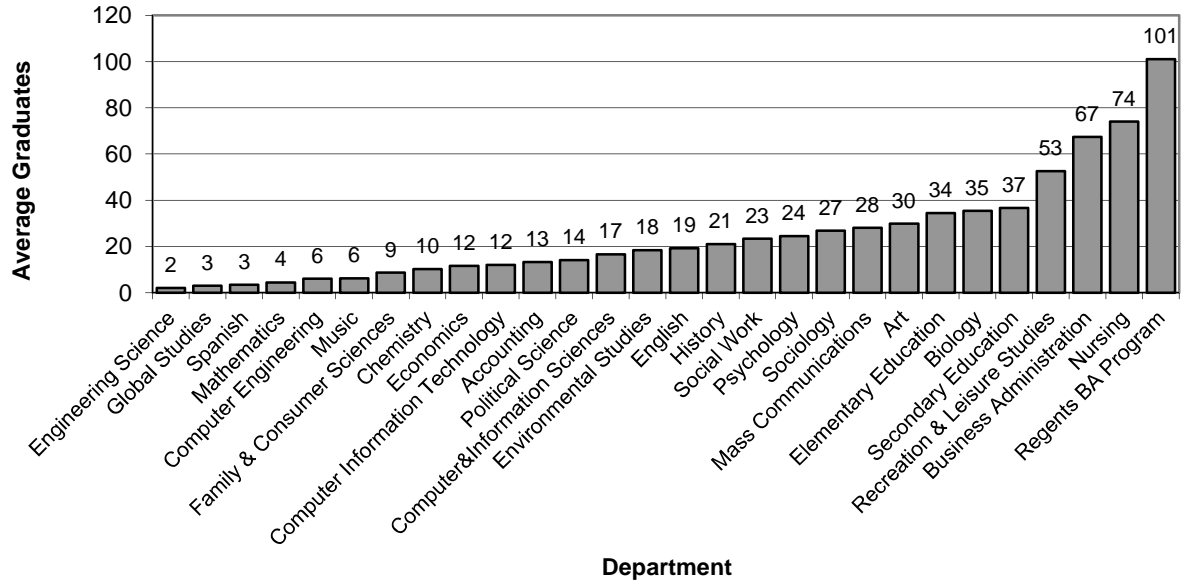


**Table 13. Graduates from Baccalaureate Programs**

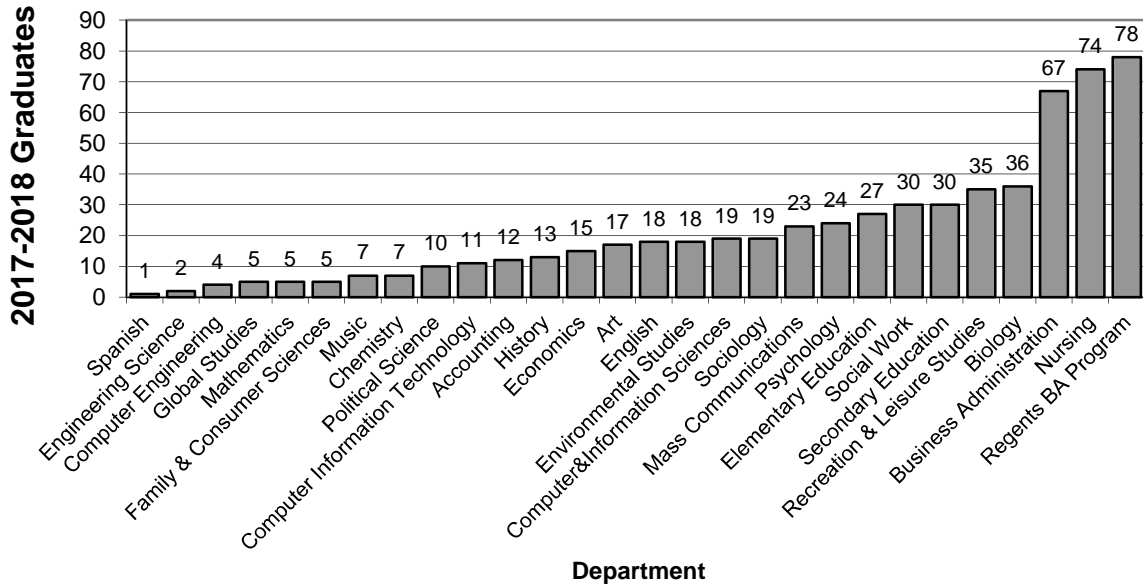
MAJORS OF GRADUATES	2014-15	2015-16	2016-17	2017-18	2018-19	Mean N	Change	%age change
Art	34	31	37	30	17	29.8	-17	-50.0%
Comm New Media	36	23	35	23	23	28.0	-13	-36.1%
English	19	21	21	17	18	19.2	-1	-5.3%
History	27	28	21	16	13	21.0	-14	-51.9%
Music	9	10	4	1	7	6.2	-2	-22.2%
Music Performance			3	3	5	3.7	5	100.0%
Spanish	4	4	7	1	1	3.4	-3	-75.0%
Arts and Humanities	129	117	128	91	84	109.8	-45	-34.9%
Global Studies				1	5	3.0	5	100.0%
Political Science	18	17	18	7	10	14.0	-8	-44.4%
Psychology	25	25	24	24	24	24.4	-1	-4.0%
Sociology	36	25	32	22	19	26.8	-17	-47.2%
Social Work	24	19	20	24	30	23.4	6	25.0%
Social & Behavioral Sciences	103	86	94	78	88	89.8	-15	-14.6%
<i>Arts, Humanities and Social Sci.</i>	232	203	222	169	172	199.6	-60	-25.9%
Business Administration	67	72	61	70	67	67.4	0	0.0%
Economics	11	14	8	10	15	11.6	4	36.4%
Accounting	19	14	14	7	12	13.2	-7	-36.8%
<i>Business</i>	97	100	83	87	94	92.2	-3	-3.1%
Biology	33	34	47	27	36	35.4	3	9.1%
Chemistry	11	13	12	8	7	10.2	-4	-36.4%
Computer&Information Sciences	13	15	17	19	19	16.6	6	46.2%
Computer Engineering	11	5	7	3	4	6.0	-7	-63.6%
Computer Information Technology	11	14	11	13	11	12.0	0	0.0%
Data Analytics					1	1.0	1	100.0%
Engineering Science				2	2	2.0	2	100.0%
Environmental Studies	13	25	16	20	18	18.4	5	38.5%
Mathematics	1	6	7	3	5	4.4	4	400.0%
<i>Science Tech Engineering Math</i>	93	112	117	95	103	104.0	10	10.8%
Nursing	75	79	79	63	74	74.0	-1	-1.3%
Elementary Education	54	28	34	29	27	34.4	-27	-50.0%
Early Childhood Education		1	0	3	6	2.5	6	100.0%
Secondary Education	44	47	29	33	30	36.6	-14	-31.8%
Art Education	1	5	2	4	2	2.8	1	100.0%
Biology Education	1	0	0	0	0	0.2	-1	-100.0%
Chemistry Education	1	0	0	0	0	0.2	-1	-100.0%
English Education	5	10	6	3	2	5.2	-3	-60.0%
Family & Consumer Sci Education	0	1	1	1	0	0.6	0	0.0%
General Science Education	0	1	1	1	0	0.6	0	0.0%
Health Education	12	6	4	1	1	4.8	-11	-91.7%
Mathematics Education	7	2	0	3	4	3.2	-3	-42.9%
Music Education	11	16	6	9	10	10.4	-1	-9.1%
Physical Education	13	6	5	4	12	8.0	-1	-7.7%
Social Studies Education	7	5	8	9	3	6.4	-4	-57.1%
Spanish Education	0	1	0	0	0	0.2	0	0.0%
Recreation & Leisure Studies	76	51	51	50	35	52.6	-41	-53.9%
Health Promotion and Ex Sci			2	18	27	15.7	27	100.0%
Family & Consumer Sciences	8	8	11	11	5	8.6	-3	-37.5%
<i>Nurs Educ Health Sci</i>	257	214	206	207	204	217.6	-53	-20.6%
Regents BA Program	111	88	132	96	78	101.0	-33	-29.7%
<b>Shepherd University</b>	<b>790</b>	<b>717</b>	<b>760</b>	<b>654</b>	<b>651</b>	<b>714.4</b>	<b>-139</b>	<b>-17.6%</b>

1. Numbers are counts of graduates for the listed year. Here, the academic year runs from fall to summer.
2. The **mean** is the sum of the annual counts divided by the number of years presented (five years).
3. The **change** is the current year's number minus the first year's number.

**Graph 13A: Average Number of Baccalaureate Degrees by Major, 2014-2015 to 2018-2019 (from Table 13)**



**Graph 13B: Baccalaureate Graduates in 2018-2019 (from Table 13)**



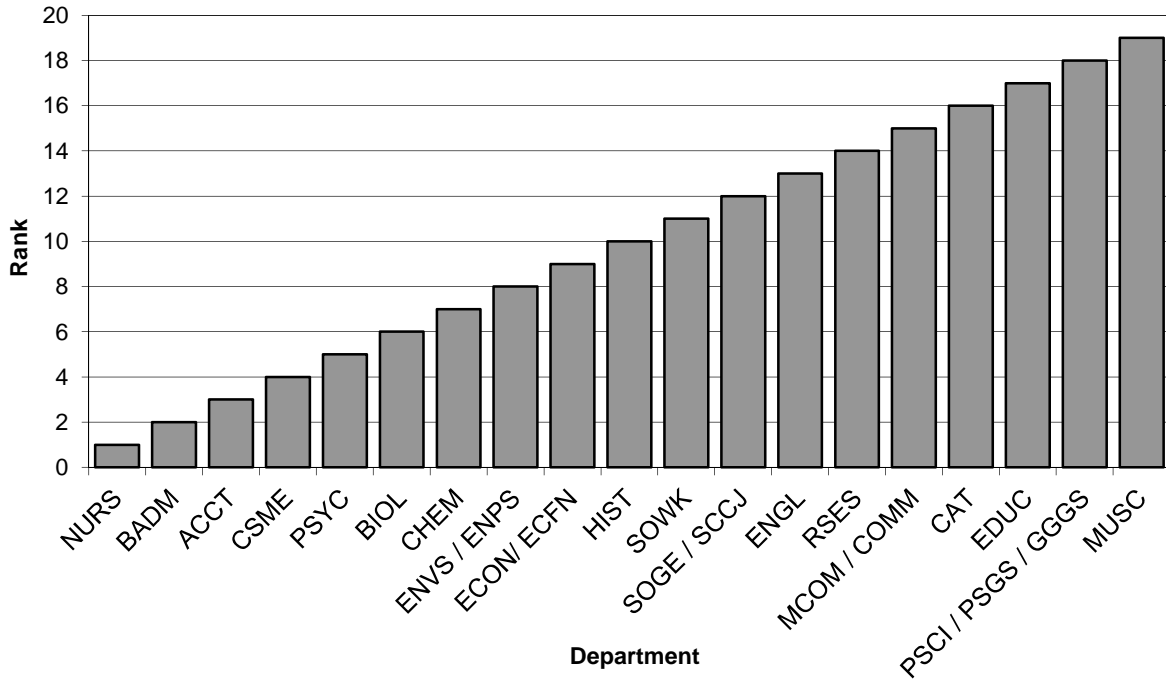
**Table 14. SCH per FTE faculty, for non-General Studies / Core Curriculum Courses**

Department	Fall 2019 numbers per FTE faculty				Fall 2015 - 2019 numbers per FTE faculty	
	FTE fac	SCH	SCH/FTE	SCH/FTE rank	Mean SCH/FTE	SCH/FTE rank
ACCT	2.75	684.00	248.73	3	238.17	3
BADM	9.50	2571.00	270.63	2	294.17	2
BIOL	6.19	1241.00	200.48	6	210.43	6
CAT	9.75	1350.00	138.46	16	138.70	16
CHEM	2.97	584.00	196.63	7	222.49	4
CSME	10.13	2164.00	213.62	4	182.90	9
ECON/ ECFN	1.50	276.00	184.00	9	174.36	11
EDUC	11.44	1578.00	137.94	17	142.47	15
ENGL	6.25	1002.00	160.32	13	127.69	18
ENVS / ENPS	3.18	612.00	192.45	8	196.23	7
HIST	3.55	637.00	179.44	10	152.17	14
MCOM / COMM	5.00	713.00	142.60	15	154.73	13
MUSC	9.61	828.50	86.21	19	95.04	19
NURS	5.92	2198.00	371.28	1	375.61	1
PSCI / PSGS / GGGS	3.08	311.00	100.97	18	131.98	17
PSYC	6.12	1307.00	213.56	5	216.38	5
RSES (incl. FACS)	19.92	3128.00	157.03	14	175.79	10
SOGE / SCCJ	5.75	987.00	171.65	12	159.34	12
SOWK	3.49	624.00	178.80	11	187.21	8
<b>Shepherd University</b>	<b>126.10</b>	<b>22795.50</b>	<b>180.77</b>		<b>182.82</b>	

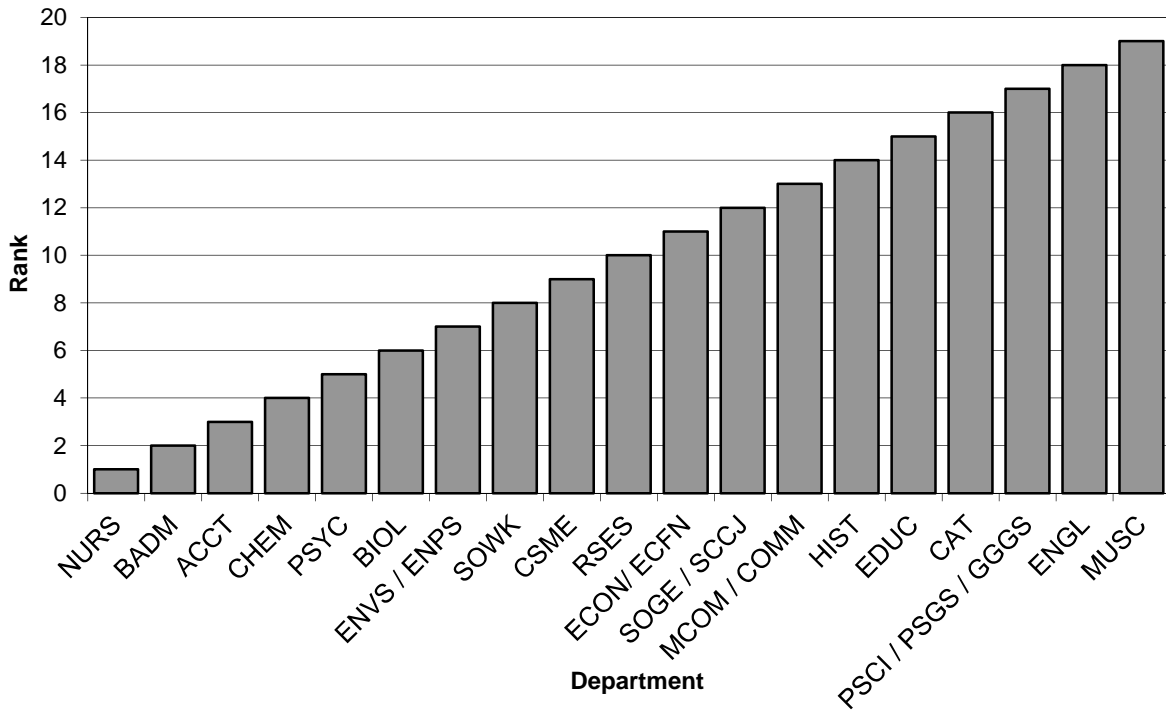
**General Explanation/Definitions.**

1. One faculty **FTE** (full-time equivalent) equals 12 hours of instructional responsibility.
2. **Majors** is the number of majors served by the program.
3. **Grads** is the number of graduates from the program.
4. **SCH** is the total number of credit hours taken by students in courses in the department.
5. **Rank** is a numerical ranking of the department based on the number in question. Ranks run from 1 (highest rank) to 20 (lowest rank).
6. Numbers are for paid courses in undergraduate programs only.
7. Courses are all courses **not** explicitly listed as General Studies or Core Curriculum courses in the appropriate Shepherd course catalogs. All GSPE courses are considered General Studies, but no foreign language courses are included (as these are General Studies requirements for B.A. programs only). Also, the Core Curriculum requirements in Writing in the Major and Capstone in the Major are not considered as Core Curriculum courses here.
8. Faculty FTE numbers for General Studies / Core Curriculum courses cannot be directly or indirectly calculated from available data. Therefore, the numbers used here are calculated based on credit-hours of courses as taken by students, not as calculated for faculty workload reporting. This results in numbers discrepant from those used elsewhere for some departments.

**Graph 14A. Overall rank, Fall 2019, non-GS/CC courses**



**Graph 14B. Overall rank, Fall 2015 - 2019, non-GS/CC courses**



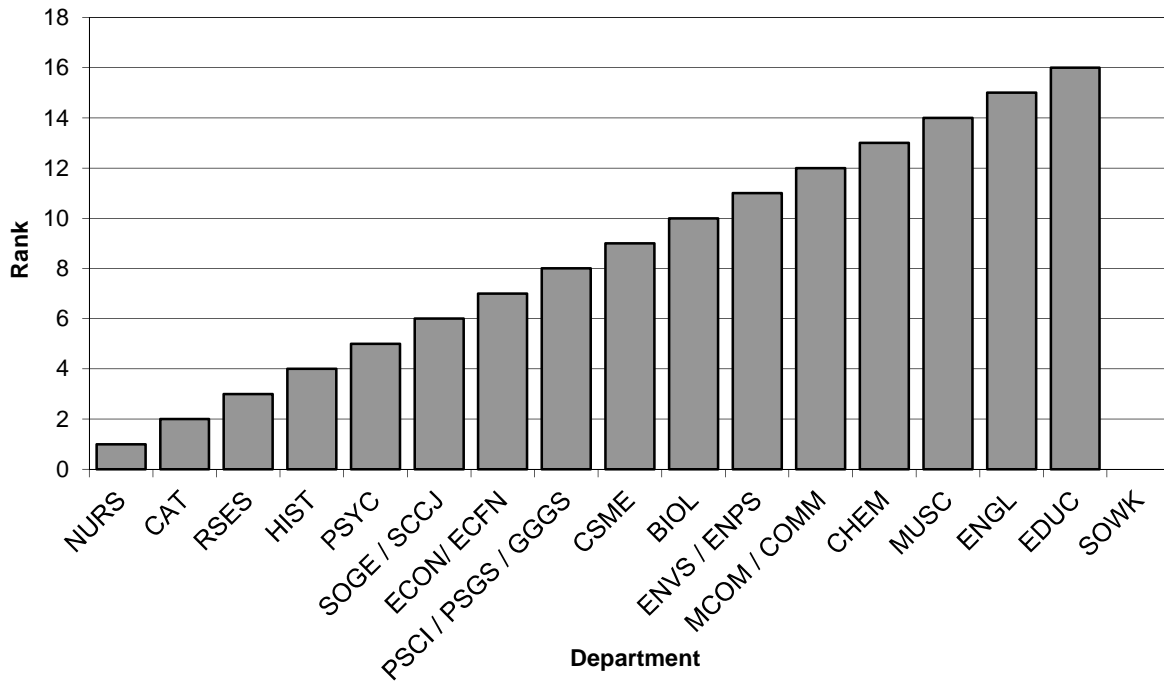
**Table 15. SCH per FTE Faculty, for General Studies / Core Curriculum Courses**

Department	Fall 2019 numbers per FTE faculty				Fall 2015 - 2019 numbers per FTE faculty	
	FTE fac	SCH	SCH/FTE	SCH/FTE rank	Mean SCH/FTE	SCH/FTE rank
ACCT						
BADM						
BIOL	6.00	1488.00	248.00	10	256.45	10
CAT	2.25	762.00	338.67	2	303.00	3
CHEM	3.00	656.00	218.67	13	270.44	8
CSME (including stretch)	8.67	2161.00	249.25	9	274.20	7
ECON/ ECFN	3.75	1011.00	269.60	7	261.87	9
EDUC	1.25	216.00	172.80	16	180.80	16
ENGL (including stretch)	12.58	2252.00	179.01	15	196.32	15
ENVS / ENPS	3.67	845.00	230.25	11	236.58	12
HIST	3.75	1161.00	309.60	4	323.25	2
MCOM / COMM	3.00	663.00	221.00	12	232.92	13
MUSC	1.75	369.00	210.86	14	208.02	14
NURS	0.50	171.00	342.00	1	325.20	1
PSCI / PSGS / GGGS	3.49	870.00	249.28	8	243.35	11
PSYC	3.00	909.00	303.00	5	274.80	6
RSES (incl. FACS)	3.00	933.00	311.00	3	300.94	4
SOGE / SCCJ	2.25	636.00	282.67	6	283.16	5
SOWK	0.00	0.00	N/A	N/A	125.00	17
<b>Shepherd University</b>	<b>61.91</b>	<b>15103.00</b>	<b>243.95</b>		<b>253.72</b>	

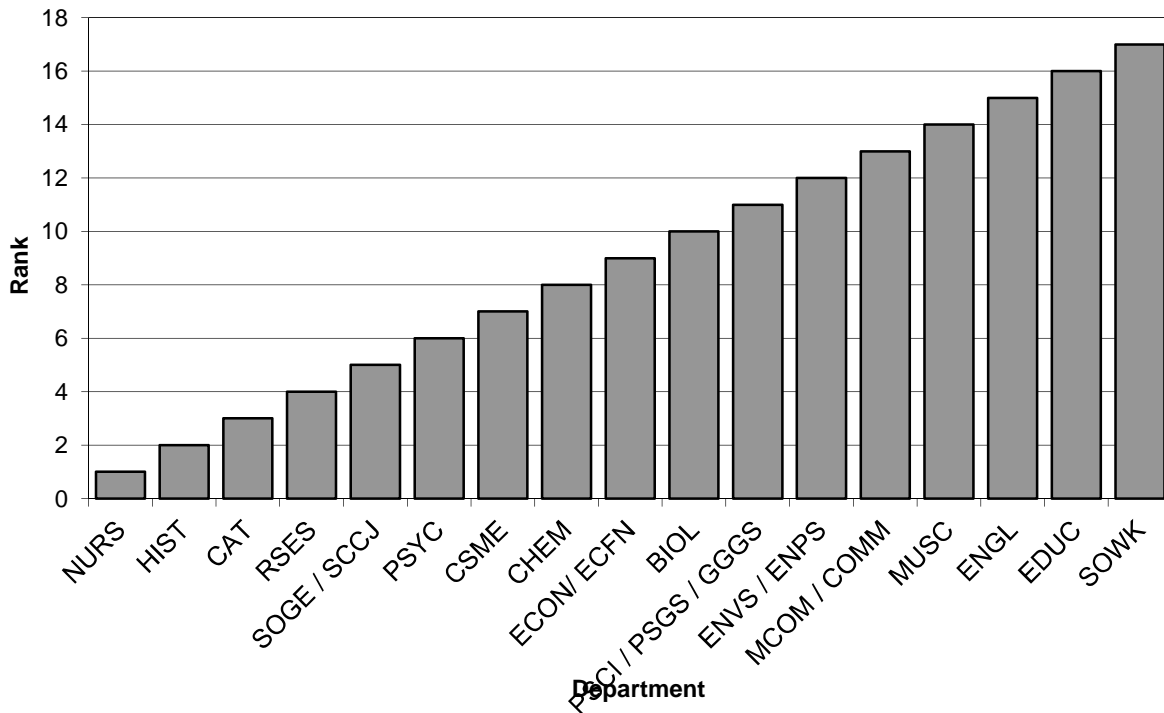
**General Explanation/Definitions.**

1. One faculty **FTE** (full-time equivalent) equals 12 hours of instructional responsibility.
2. **Majors** is the number of majors served by the program.
3. **Grads** is the number of graduates from the program.
4. **SCH** is the total number of credit hours taken by students in courses in the department.
5. **Rank** is a numerical ranking of the department based on the number in question. Ranks run from 1 (highest rank) to 20 (lowest rank).
6. Numbers are for paid courses in undergraduate programs only.
7. Courses are all courses explicitly listed as General Studies or Core Curriculum courses in the appropriate Shepherd course catalogs. All GSPE courses are considered General Studies, but no foreign language courses are included (as these are General Studies requirements for B.A. programs only). Also, the Core Curriculum requirements in Writing in the Major and Capstone in the Major are not considered as Core Curriculum courses here.
8. Faculty FTE numbers for General Studies / Core Curriculum courses cannot be directly or indirectly calculated from available data. Therefore, the numbers used here are calculated based on credit-hours of courses as taken by students, not as calculated for faculty workload reporting. This results in numbers discrepant from those used elsewhere for some departments.
9. As of Fall 2018, Stretch English and Stretch Mathematics courses are housed in English and CSME, respectively. For Fall 2017 and earlier, the FTE for these courses have been added to the English and CSME FTE totals.

**Graph 15A. Overall rank, Fall 2019, GS/CC courses**



**Graph 15B. Overall rank, Fall 2015 - 2019, GS/CC courses**



**Table 16. Core Curriculum courses by time of day, Fall 2019**

Time	Weekdays												Saturday	
	Monday		Tuesday		Wednesday		Thursday		Friday		Total		N	% tot
	N	% tot	N	% tot	N	% tot	N	% tot	N	% tot	N	% tot		
7:00 AM	0	0.0%	0	0.0%	0	0.0%	0	0.0%	0	0.0%	0	0.0%	0	N/A
8:00 AM	12	4.5%	7	3.3%	11	4.2%	8	4.5%	11	5.2%	49	4.3%	0	N/A
9:00 AM	31	11.6%	23	10.9%	30	11.4%	23	12.9%	30	14.1%	137	12.1%	0	N/A
10:00 AM	37	13.8%	16	7.6%	36	13.6%	16	9.0%	35	16.4%	140	12.3%	0	N/A
11:00 AM	36	13.4%	21	10.0%	36	13.6%	19	10.7%	32	15.0%	144	12.7%	0	N/A
12:00 PM	33	12.3%	37	17.5%	34	12.9%	33	18.5%	29	13.6%	166	14.6%	0	N/A
1:00 PM	30	11.2%	31	14.7%	30	11.4%	26	14.6%	29	13.6%	146	12.9%	0	N/A
2:00 PM	35	13.1%	18	8.5%	33	12.5%	12	6.7%	29	13.6%	127	11.2%	0	N/A
3:00 PM	25	9.3%	25	11.8%	25	9.5%	20	11.2%	15	7.0%	110	9.7%	0	N/A
4:00 PM	10	3.7%	14	6.6%	10	3.8%	13	7.3%	2	0.9%	49	4.3%	0	N/A
5:00 PM	4	1.5%	5	2.4%	6	2.3%	5	2.8%	1	0.5%	21	1.9%	0	N/A
6:00 PM	5	1.9%	5	2.4%	5	1.9%	2	1.1%	0	0.0%	17	1.5%	0	N/A
7:00 PM	6	2.2%	5	2.4%	5	1.9%	1	0.6%	0	0.0%	17	1.5%	0	N/A
8:00 PM	4	1.5%	4	1.9%	3	1.1%	0	0.0%	0	0.0%	11	1.0%	0	N/A
9:00 PM	0	0.0%	0	0.0%	0	0.0%	0	0.0%	0	0.0%	0	0.0%	0	N/A
10:00 PM	0	0.0%	0	0.0%	0	0.0%	0	0.0%	0	0.0%	0	0.0%	0	N/A
11:00 PM	0	0.0%	0	0.0%	0	0.0%	0	0.0%	0	0.0%	0	0.0%	0	N/A
<b>Total</b>	<b>268</b>	<b>23.6%</b>	<b>211</b>	<b>18.6%</b>	<b>264</b>	<b>23.3%</b>	<b>178</b>	<b>15.7%</b>	<b>213</b>	<b>18.8%</b>	<b>1134</b>	<b>100.0%</b>	<b>0</b>	<b>N/A</b>

Data derive from census-date Banner data.

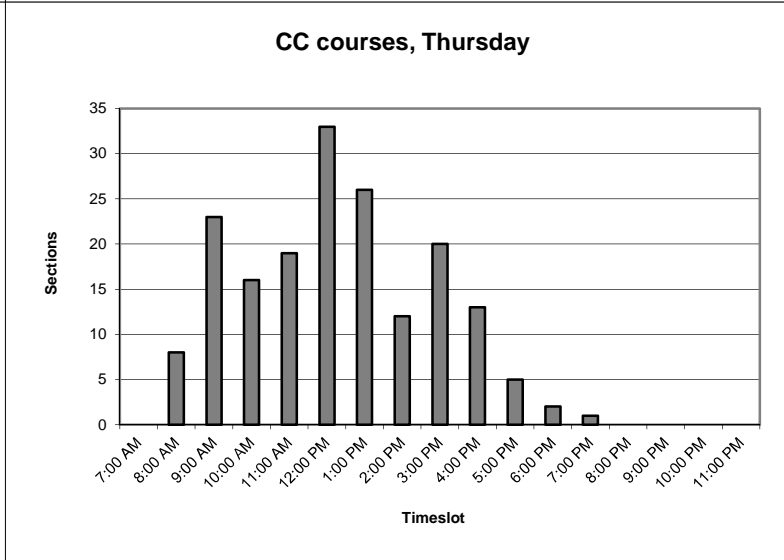
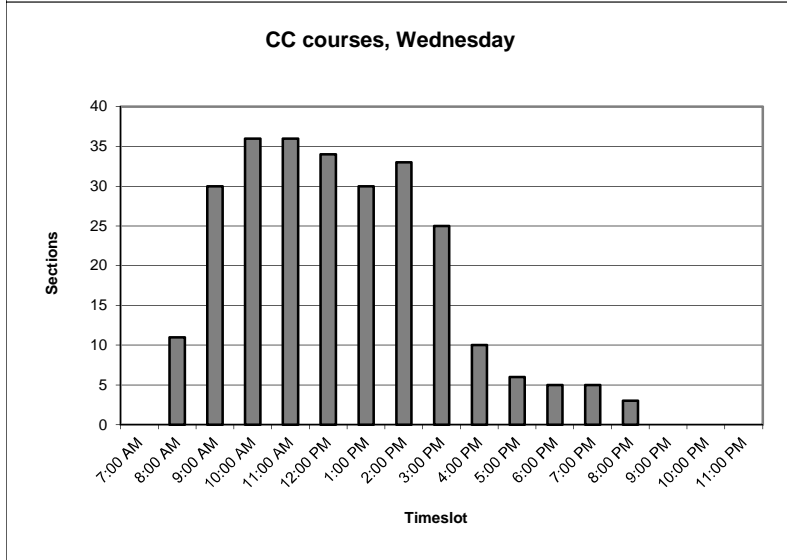
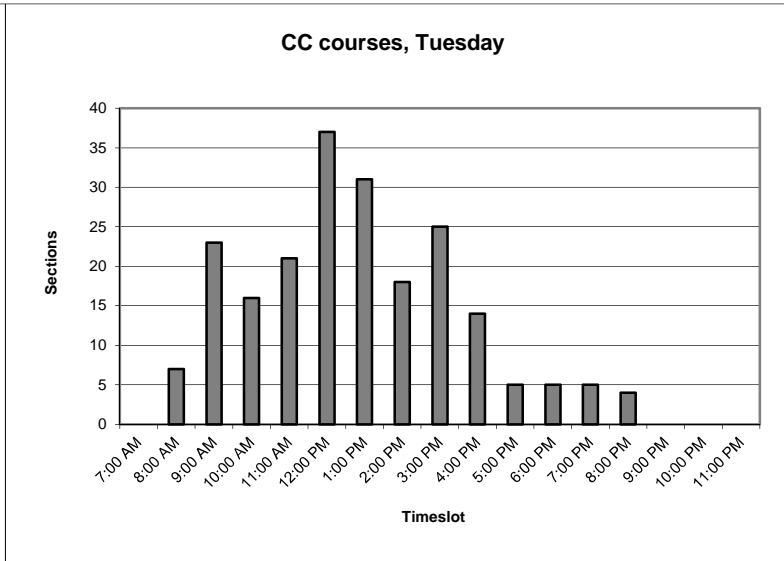
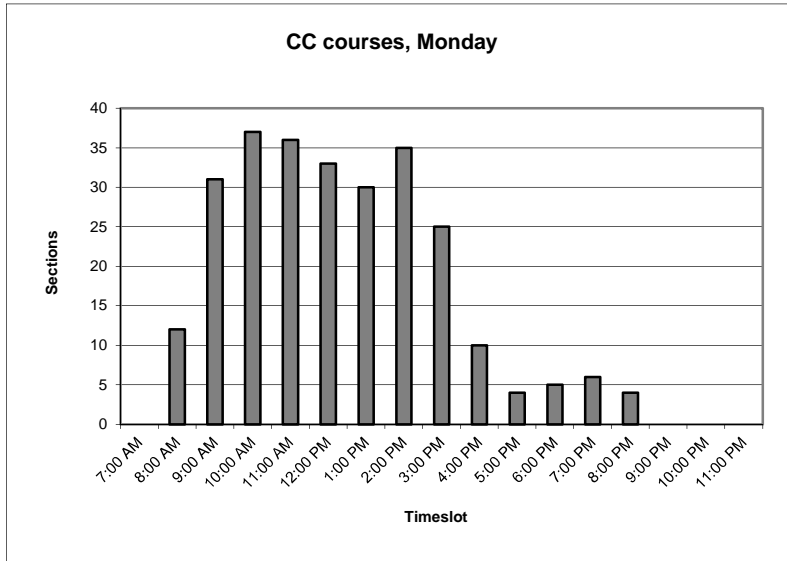
Courses are all courses explicitly listed as Core Curriculum courses in the current Shepherd catalog. The Core Curriculum requirements in Writing in the Major and Capstone in the Major are not included here.

"Time" indicates the timeslot in which the class is running. For example, "10:00 AM" courses are those courses that are in session from 10:00 AM to 10:59 AM. These courses may start at some point during that hour, or may have started earlier and still be in session for part or all of that hour.

"% tot" is the percentage of the column total. In the "Total" line, percentages are computed based upon the line total (excepting Saturdays).

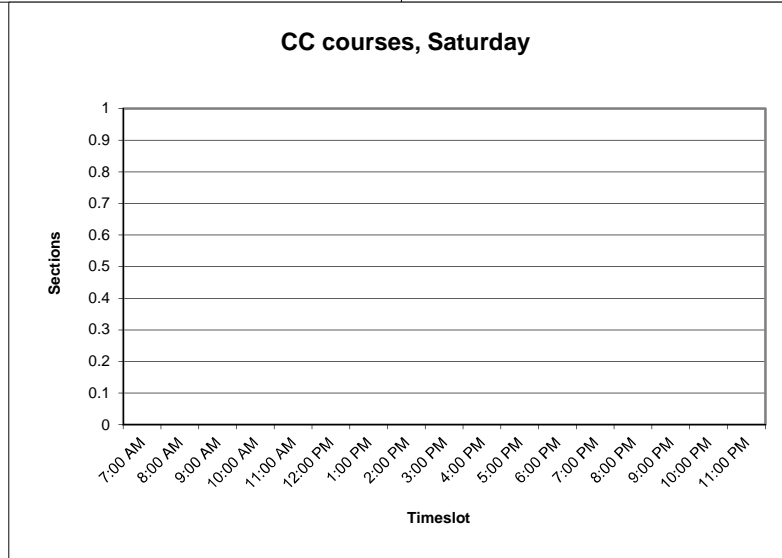
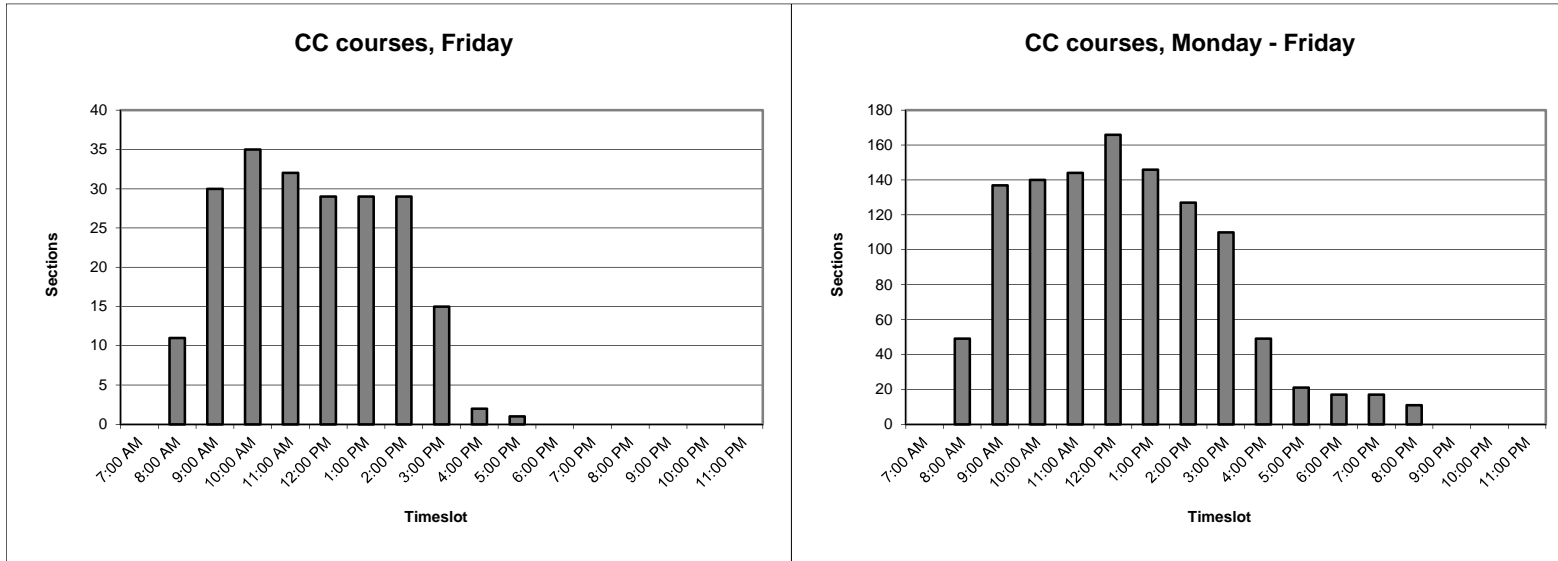
Courses with no scheduled times in Banner ("TBA") are not included here. In Fall 2019, there were 30 of these.

**Graphs 16A. Core Curriculum courses by time of day, Monday - Thursday**





**Graphs 16B. Core Curriculum courses by time of day, Friday, weekdays and Saturday**

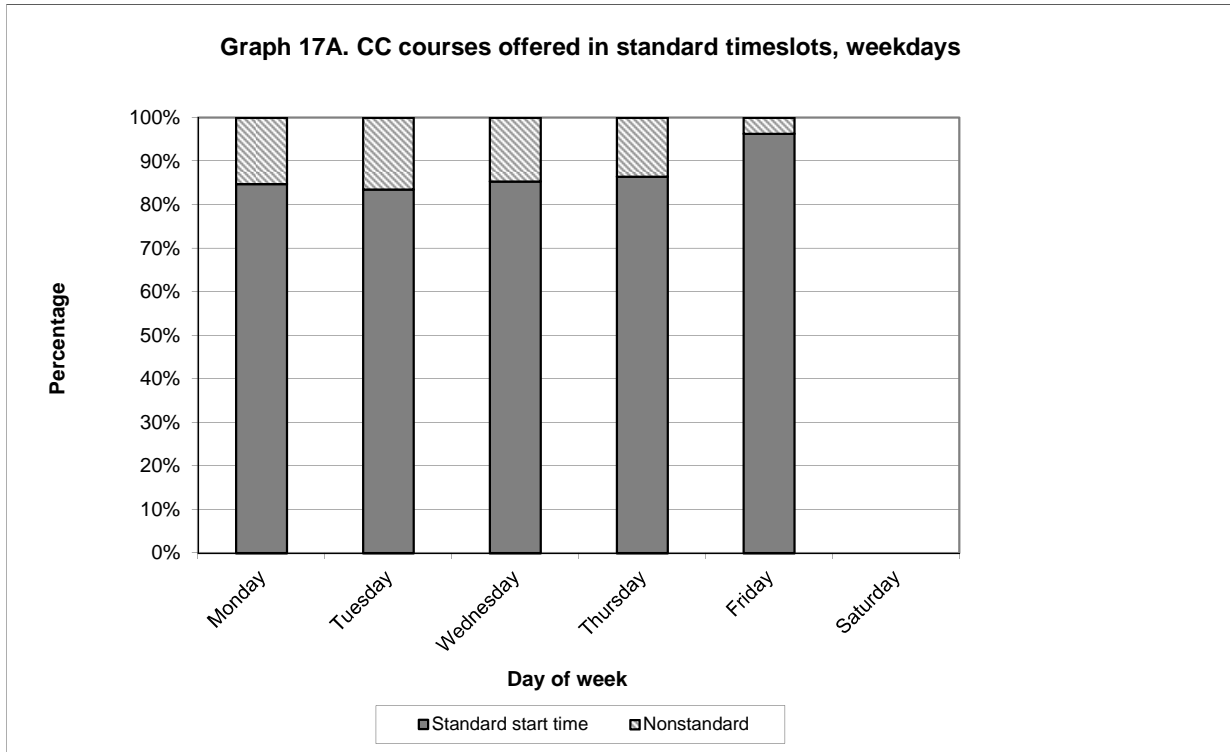


**Table 17. Core Curriculum courses offered in standard timeslots, weekdays**

Standard start time	Monday		Tuesday		Wednesday		Thursday		Friday		Saturday		Overall	
	N	%	N	%	N	%	N	%	N	%	N	%	N	%
Nonstandard	20	15.3%	15	16.5%	19	14.6%	11	13.6%	4	3.7%	0	N/A	69	12.8%
Standard	111	84.7%	76	83.5%	111	85.4%	70	86.4%	104	96.3%	0	N/A	472	87.2%
<b>Total</b>	<b>131</b>	<b>100.0%</b>	<b>91</b>	<b>100.0%</b>	<b>130</b>	<b>100.0%</b>	<b>81</b>	<b>100.0%</b>	<b>108</b>	<b>100.0%</b>	<b>0</b>	<b>N/A</b>	<b>541</b>	<b>100.0%</b>

Data derive from census-date Banner data.

"Standard" start times are those listed in the Fall semester course catalog with defined final exam schedules. These are:  
 MWF: 8:10 AM, 9:10 AM, 10:10 AM, 11:10 AM, 12:10 PM, 1:10 PM, 2:10 PM, 3:10 PM.  
 TR: 8:10 AM, 9:35 AM, 11:00 AM, 12:25 PM, 1:50 PM, 3:15 PM.



**Table 18. Online and hybrid courses, Fall 2015 - Fall 2019**

	Fall 2015		Fall 2016		Fall 2017		Fall 2018		Fall 2019		Total		Average	
	N	% all	N	% all	N	% all	N	% all	N	% all	N	% all	N	% all
Hybrid	6	0.5%	3	0.3%	7	0.6%	6	0.5%	10	0.9%	32	0.6%	6	0.6%
Online	38	3.4%	64	5.7%	74	6.7%	101	9.2%	97	9.0%	374	6.8%	75	6.8%
All courses	1119		1130		1103		1099		1074		5525		1105	

All data derive from HEPC census-date data submissions.

"Hybrid" courses are courses with more than 50% online delivery.

"Online" courses are those courses taught entirely online.

"Courses" are sections which receive a unique CRN from the Registrar.

"% all" is the percentage of all courses taught that semester represented by the line. For example, for Fall 2019, the 97 online courses represent 9.0% of the total of 1074 courses taught that semester.

The HEPC data from which these numbers derive allows for four categories of online courses:

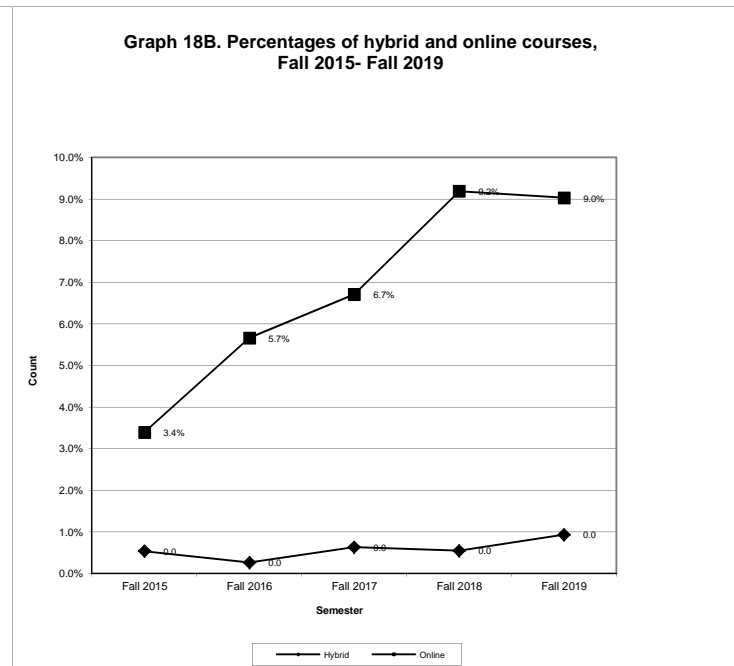
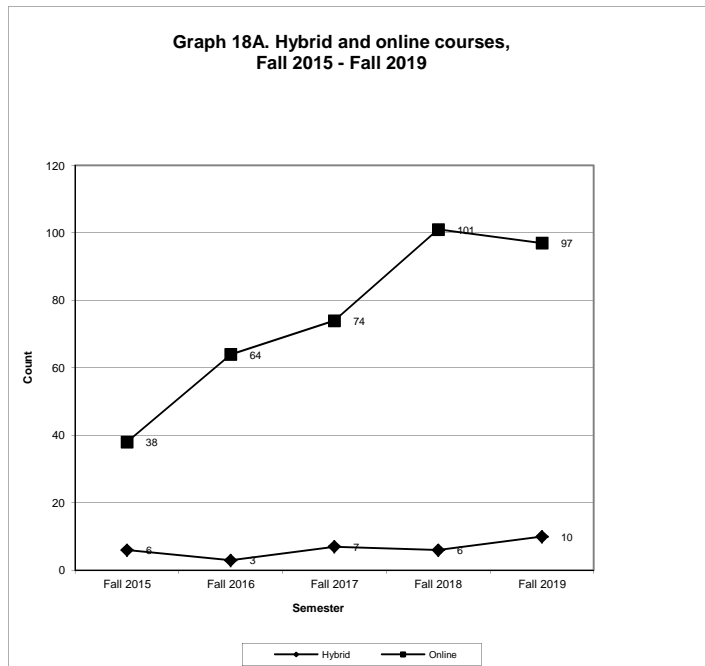
100% non-traditional delivery (labeled as "Online" here)

50% - 74% non-traditional delivery (labeled as "Hybrid" here)

75% - 99% non-traditional delivery (labeled as "Hybrid" here)

Less than 50% non-traditional delivery (included in "All courses", but not listed separately here)

"Non-traditional delivery" can include electronic or analog delivery (e.g., correspondence courses, satellite courses), but in practice usually indicates online delivery.



**Table 19. Students Enrolled in Graduate Programs**

Program	Fall 2015		Fall 2016		Fall 2017		Fall 2018		Fall 2019		Fall 2015-2019	
	FTE	HC	FTE	HC	FTE	HC	FTE	HC	FTE	HC	Mean FTE	Change in FTE
Appalachian Studies									3.00	5	3.00	3.00
Business Administration	41.00	65	50.25	82	54.75	89	42.00	64	39.08	64	45.42	-1.92
Curriculum and Instruction	7.50	22	7.75	18	5.83	14	4.25	9	2.00	7	5.47	-5.50
Data Analytics							4.25	6	5.08	9	4.67	5.08
Music Education	2.00	5	0.00	0	0.00	0	0.00	0	0.00	0	0.40	-2.00
Student Development and Administration	17.83	27	17.00	26	19.25	28	17.00	27	16.00	24	17.42	-1.83
Teaching	17.08	26	17.83	25	17.75	26	15.17	23	21.25	32	17.82	4.17
DNP	12.17	15	15.92	22	19.42	25	14.92	18	25.42	24	17.57	13.25
<b>Shepherd University</b>	<b>85.41</b>	<b>145</b>	<b>107.67</b>	<b>172</b>	<b>117</b>	<b>182</b>	<b>97.59</b>	<b>147</b>	<b>111.83</b>	<b>165</b>	<b>103.90</b>	<b>26.42</b>

**General Explanation / Definitions.**

1. The student **FTE** (full-time equivalent) equals 12 credit hours.
2. The **HC** is the headcount of students enrolled in and taking courses in the degree program.
3. The **mean FTE** is the average FTE for the years shown.
4. The **change in FTE** is the change in the FTE from the current year to the earliest year shown.
5. Each student is counted once in each program in which s/he is enrolled. Students enrolled in multiple programs are thus counted more than once. FTE and HC totals, however, are nonduplicated - each student is counted once regardless of the number of programs s/he is enrolled in. Thus, HC and FTE totals may not match totals across the individual programs.

**Table 20. Graduates from Graduate Programs**

Program	2014-2015	2015-2016	2016-2017	2017-2018	2018-2019	Mean N	Change
Business Administration	40	17	24	33	29	28.6	-11
Curriculum and Instruction	4	9	10	4	2	5.8	-2
Data Analysis and Information Systems					2	2.0	2
Music Education	3	3	4	0	0	2.0	-3
Student Development and Administration	19	11	14	8	15	13.4	-4
Teaching	11	15	14	7	10	11.4	-1
DNP		0	0	9	4	3	4
<b>Shepherd University</b>	<b>77</b>	<b>55</b>	<b>66</b>	<b>61</b>	<b>62</b>	<b>64.2</b>	<b>-15</b>

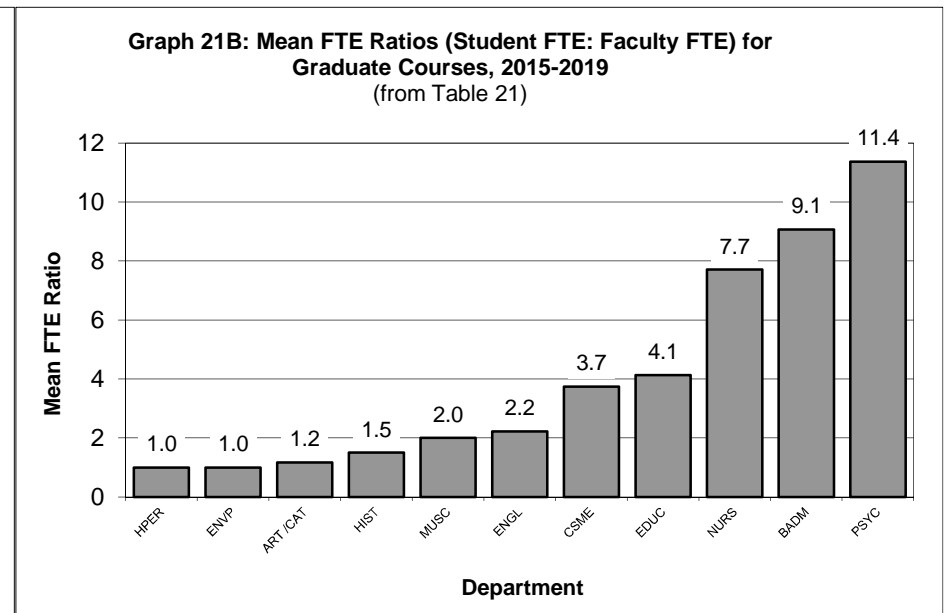
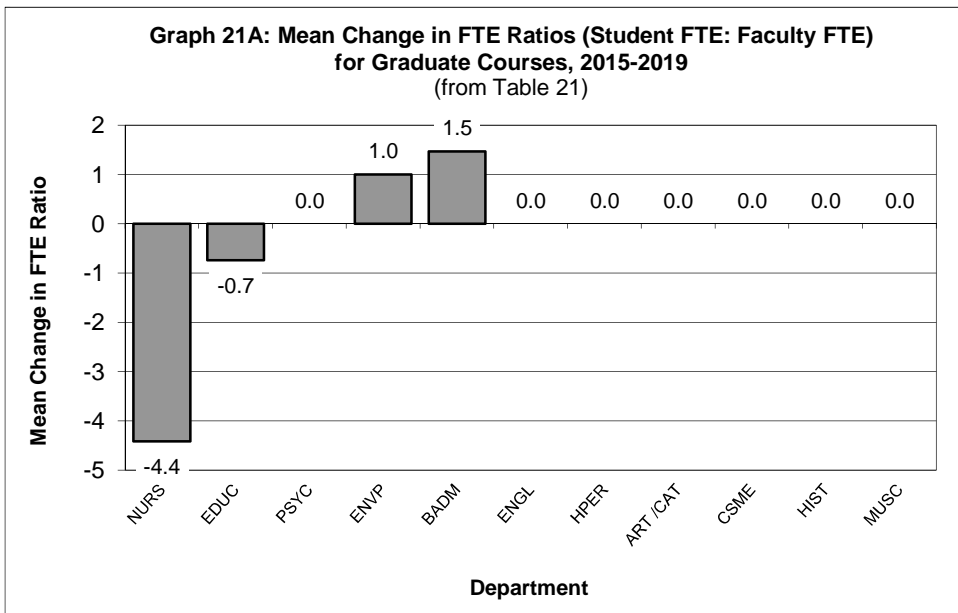
Numbers of graduates are computed using the fall, spring, and following summer of the stated year.

**Table 21. Graduate Student to Faculty FTE Ratios**

Department	Fall 2015			Fall 2016			Fall 2017			Fall 2018			Fall 2019				Fall 2015-2019	
	F-FTE	S-FTE	Ratio	F-FTE	S-FTE	Ratio	F-FTE	S-FTE	Ratio	F-FTE	S-FTE	Ratio	F-FTE	S-FTE	Ratio	Change	Mean Ratio	Change in Ratio
CAT	0.25	0.25	1.00	0.50	0.75	1.50	0.25	0.25	1.00	0.00	0.00	N/A	0.00	0.00	N/A	N/A	1.17	N/A
BADM	5.50	42.75	7.77	6.56	52.75	8.04	5.23	57.50	10.99	5.00	46.50	9.30	4.25	39.25	9.24	-0.06	9.07	1.46
CSME	0.00	0.00	N/A	0.00	0.00	N/A	0.50	1.25	2.50	1.25	4.25	3.40	0.75	4.00	5.33	1.93	3.74	N/A
EDUC	5.00	22.00	4.40	4.50	21.50	4.78	4.25	17.50	4.12	4.33	15.92	3.68	5.33	19.50	3.66	-0.02	4.13	-0.74
ENGL	0.00	0.00	N/A	0.42	1.67	3.98	1.00	1.75	1.75	0.75	0.75	1.00	1.50	3.25	2.17	1.17	2.22	N/A
ENVP													0.58	0.58	1.00	N/A	1.00	1.00
HIST	0.00	0.00	N/A	0.00	0.00	N/A	0.50	0.50	1.00	0.00	0.00	N/A	0.25	0.50	2.00	N/A	1.50	N/A
HPER	0.00	0.00	N/A	0.00	0.00	N/A	0.25	0.25	1.00	0.00	0.00	N/A	0.00	0.00	N/A	N/A	1.00	N/A
MUSC	0.50	1.00	2.00	0.00	0.00	N/A	0.00	0.00	N/A	0.00	0.00	N/A	0.00	0.00	N/A	N/A	2.00	N/A
NURS	1.08	11.42	10.57	1.50	15.67	10.45	2.92	19.67	6.74	3.17	14.67	4.63	3.56	21.92	6.16	1.53	7.71	-4.42
PSYC	1.50	16.00	10.67	1.50	18.00	12.00	1.50	19.75	13.17	1.50	15.50	10.33	1.50	16.00	10.67	0.33	11.37	0.00
<b>Shepherd University</b>	<b>13.83</b>	<b>93.42</b>	<b>6.75</b>	<b>14.98</b>	<b>110.34</b>	<b>7.37</b>	<b>16.40</b>	<b>118.42</b>	<b>7.22</b>	<b>16.00</b>	<b>97.59</b>	<b>6.10</b>	<b>17.72</b>	<b>105.00</b>	<b>5.93</b>	<b>-0.17</b>	<b>6.67</b>	<b>-0.83</b>

**General Explanation/Definitions.**

1. The **ratio** is obtained by dividing the student FTE by the faculty FTE.
2. One faculty **FTE** (full-time equivalent) equals 12 hours of instructional responsibility and one student FTE equals 12 credit hours. The ratio is the student FTE divided by the faculty FTE.
3. The annual **change** is the current year's ratio minus the prior year's ratio.
4. The **mean ratio** is the sum of the annual ratios divided by the number of years for which data exist.
5. The **change in ratio** is the current year's ratio minus the first year's ratio.
6. Numbers are for paid courses only.



Except for Tables 22 and 29-31, all tables are for undergraduate degree-seeking students only and the census date (10/15/19) HEPC Student file is the source of data. Only credit-earning students are counted unless noted otherwise.

**Table 22. Degree Targets**

	Bacc	None	Master's	DNP	Total
4-Year	2633	830	141	24	3628

(Includes noncredit students)

**Table 23. ACT and ACT Equivalent Scores by Residency**

	ACT		ACT Equivalent		Total	
	N	Mean	N	Mean	N	Mean
Eastern Panhandle	708	21.7	140	21.8	848	21.7
<i>Berkeley</i>	417	21.5	73	21.8	490	21.5
<i>Jefferson</i>	259	22.1	66	21.7	325	22.0
<i>Morgan</i>	32	21.3	1	21.0	33	21.3
Other WV counties	144	23.2	3	22.0	147	23.2
MD	59	22.9	88	21.4	147	22.0
VA	33	21.5	37	21.5	70	21.5
PA	4	22.3	10	23.2	14	22.9
Other US states	16	20.9	10	18.9	26	20.1
International	1	17.0	3	23.3	4	21.8
<b>Total</b>	<b>965</b>	<b>22.0</b>	<b>291</b>	<b>21.6</b>	<b>1256</b>	<b>21.9</b>

National ACT scores, class of 2018:

Mean 20.8

WV ACT scores, class of 2018:

Mean 20.3

Note: Some students submitted both ACT and SAT scores at the time of admission. Students doing so chose one or the other as the preferred score type; only those scores are used for these tables. Some students submitted neither score.

As of 10/22/2019, updated scores for the class of 2019 are not yet available from ACT.

**Table 24. Status by Residency, Five-Year Trends**

	Full-Time											
	Fall 2015		Fall 2016		Fall 2017		Fall 2018		Fall 2019		Total	
	N	%	N	%	N	%	N	%	N	%	N	%
Eastern Panhandle	1550	46.7%	1472	47.6%	1487	50.3%	1445	51.3%	1387	52.7%	7341	49.5%
<i>Berkeley</i>	902	27.2%	850	27.5%	865	29.3%	820	29.1%	769	29.2%	4206	28.4%
<i>Jefferson</i>	581	17.5%	551	17.8%	563	19.0%	566	20.1%	574	21.8%	2835	19.1%
<i>Morgan</i>	67	2.0%	71	2.3%	59	2.0%	59	2.1%	44	1.7%	300	2.0%
Other WV counties	251	7.6%	231	7.5%	217	7.3%	221	7.8%	188	7.1%	1108	7.5%
MD	718	21.6%	631	20.4%	555	18.8%	532	18.9%	457	17.4%	2893	19.5%
VA	263	7.9%	228	7.4%	217	7.3%	206	7.3%	189	7.2%	1103	7.4%
PA	61	1.8%	60	1.9%	54	1.8%	58	2.1%	55	2.1%	288	1.9%
Other US states	81	2.4%	66	2.1%	62	2.1%	58	2.1%	51	1.9%	318	2.1%
International	10	0.3%	9	0.3%	19	0.6%	22	0.8%	27	1.0%	87	0.6%
<b>Total</b>	<b>2934</b>	<b>88.4%</b>	<b>2697</b>	<b>87.2%</b>	<b>2611</b>	<b>88.3%</b>	<b>2542</b>	<b>90.2%</b>	<b>2354</b>	<b>89.5%</b>	<b>13138</b>	<b>88.7%</b>

	Part-Time											
	Fall 2015		Fall 2016		Fall 2017		Fall 2018		Fall 2019		Total	
	N	%	N	%	N	%	N	%	N	%	N	%
Eastern Panhandle	282	8.5%	277	9.0%	239	8.1%	198	7.0%	182	6.9%	1178	7.9%
<i>Berkeley</i>	164	4.9%	166	5.4%	157	5.3%	122	4.3%	115	4.4%	724	4.9%
<i>Jefferson</i>	107	3.2%	103	3.3%	74	2.5%	69	2.4%	60	2.3%	413	2.8%
<i>Morgan</i>	11	0.3%	8	0.3%	8	0.3%	7	0.2%	7	0.3%	41	0.3%
Other WV counties	14	0.4%	12	0.4%	14	0.5%	8	0.3%	17	0.6%	65	0.4%
MD	49	1.5%	69	2.2%	66	2.2%	33	1.2%	42	1.6%	259	1.7%
VA	34	1.0%	27	0.9%	18	0.6%	29	1.0%	23	0.9%	131	0.9%
PA	4	0.1%	3	0.1%	1	0.0%	3	0.1%	2	0.1%	13	0.1%
Other US states	3	0.1%	7	0.2%	4	0.1%	3	0.1%	5	0.2%	22	0.1%
International	0	0.0%	2	0.1%	3	0.1%	1	0.0%	6	0.2%	12	0.1%
<b>Total</b>	<b>386</b>	<b>11.6%</b>	<b>397</b>	<b>12.8%</b>	<b>345</b>	<b>11.7%</b>	<b>275</b>	<b>9.8%</b>	<b>277</b>	<b>10.5%</b>	<b>1680</b>	<b>11.3%</b>

	Total											
	Fall 2015		Fall 2016		Fall 2017		Fall 2018		Fall 2019		Total	
	N	%	N	%	N	%	N	%	N	%	N	%
Eastern Panhandle	1832	55.2%	1749	56.5%	1726	58.4%	1643	58.3%	1569	59.6%	8519	57.5%
<i>Berkeley</i>	1066	32.1%	1016	32.8%	1022	34.6%	942	33.4%	884	33.6%	4930	33.3%
<i>Jefferson</i>	688	20.7%	654	21.1%	637	21.5%	635	22.5%	634	24.1%	3248	21.9%
<i>Morgan</i>	78	2.3%	79	2.6%	67	2.3%	66	2.3%	51	1.9%	341	2.3%
Other WV counties	265	8.0%	243	7.9%	231	7.8%	229	8.1%	205	7.8%	1173	7.9%
MD	767	23.1%	700	22.6%	621	21.0%	565	20.1%	499	19.0%	3152	21.3%
VA	297	8.9%	255	8.2%	235	7.9%	235	8.3%	212	8.1%	1234	8.3%
PA	65	2.0%	63	2.0%	55	1.9%	61	2.2%	57	2.2%	301	2.0%
Other US states	84	2.5%	73	2.4%	66	2.2%	61	2.2%	56	2.1%	340	2.3%
International	10	0.3%	11	0.4%	22	0.7%	23	0.8%	33	1.3%	99	0.7%
<b>Total</b>	<b>3320</b>	<b>100.0%</b>	<b>3094</b>	<b>100.0%</b>	<b>2956</b>	<b>100.0%</b>	<b>2817</b>	<b>100.0%</b>	<b>2631</b>	<b>100.0%</b>	<b>14818</b>	<b>100.0%</b>

All percentages for each year are computed based upon the total students for each year. For example, for Fall 2019, the 1387 full-time students in the Eastern Panhandle are 52.7% of the total number of students in Fall 2019 (2631). Tables include undergraduate degree-seeking credit students only.

**Table 25. ACT and ACT Equivalent Scores by Residency**

	ACT or ACT Equivalent										Total	Mean
	16 or lower	17	18	19	20	21	22	23-25	26-30	31 or higher	N	
WV	48	63	63	91	117	100	105	253	133	22	995	21.9
MD	7	14	15	15	15	9	18	19	31	4	147	22.0
VA	3	4	10	7	4	6	8	19	9	0	70	21.5
PA	0	1	1	1	0	2	1	6	2	0	14	22.9
Other US states	2	4	3	7	1	2	0	4	3	0	26	20.1
International	0	1	0	0	0	0	1	2	0	0	4	21.8
<b>Total</b>	<b>60</b>	<b>87</b>	<b>92</b>	<b>121</b>	<b>137</b>	<b>119</b>	<b>133</b>	<b>303</b>	<b>178</b>	<b>26</b>	<b>1256</b>	<b>21.9</b>

Note: Some students submitted both ACT and SAT scores at the time of admission. Students doing so chose one or the other as the preferred score type; only those scores are used for these tables. Some students submitted neither score.

**Table 26. Class Level by Residency**

	Freshmen		Sophomore		Junior		Senior		Unclassified		Total	
	N	Percent	N	Percent	N	Percent	N	Percent	N	Percent	N	Percent
Panhandle	411	15.6%	302	11.5%	395	15.0%	458	17.4%	3	0.1%	1569	59.6%
<i>Berkeley</i>	231	8.8%	152	5.8%	230	8.7%	268	10.2%	3	0.1%	884	33.6%
<i>Jefferson</i>	172	6.5%	140	5.3%	153	5.8%	169	6.4%	0	0.0%	634	24.1%
<i>Morgan</i>	8	0.3%	10	0.4%	12	0.5%	21	0.8%	0	0.0%	51	1.9%
Other WV counties	40	1.5%	49	1.9%	52	2.0%	64	2.4%	0	0.0%	205	7.8%
MD	107	4.1%	95	3.6%	135	5.1%	162	6.2%	0	0.0%	499	19.0%
VA	53	2.0%	35	1.3%	53	2.0%	70	2.7%	1	0.0%	212	8.1%
PA	17	0.6%	15	0.6%	11	0.4%	14	0.5%	0	0.0%	57	2.2%
Other US states	21	0.8%	9	0.3%	14	0.5%	11	0.4%	1	0.0%	56	2.1%
International	9	0.3%	5	0.2%	8	0.3%	9	0.3%	2	0.1%	33	1.3%
<b>Total</b>	<b>658</b>	<b>25.0%</b>	<b>510</b>	<b>19.4%</b>	<b>668</b>	<b>25.4%</b>	<b>788</b>	<b>30.0%</b>	<b>7</b>	<b>0.3%</b>	<b>2631</b>	<b>100.0%</b>



**Table 27. Retention of Fall 2018  
Freshman Cohort by Residency**

	Freshmen	Returned	Percent
Eastern Panhandle	319	228	71.5%
<i>Berkeley</i>	174	116	66.7%
<i>Jefferson</i>	134	105	78.4%
<i>Morgan</i>	11	7	63.6%
Other WV counties	55	45	81.8%
MD	121	80	66.1%
VA	50	35	70.0%
PA	18	13	72.2%
Other US states	15	7	46.7%
International	6	4	66.7%
<b>Total</b>	<b>584</b>	<b>412</b>	<b>70.5%</b>

Full-time first-time-in-college freshmen who enrolled in Fall 2018 and were still enrolled as of Fall 2019. Students who withdrew after enrolling this semester are included.

**Table 28. Graduation of Fall 2013  
Freshman Cohort by Residency**

	Bacc. grads	Percent
Eastern Panhandle	182	55.5%
<i>Berkeley</i>	99	30.2%
<i>Jefferson</i>	77	23.5%
<i>Morgan</i>	6	1.8%
Other WV counties	37	11.3%
MD	64	19.5%
VA	26	7.9%
PA	8	2.4%
Other US states	11	3.4%
International	0	0.0%
<b>Total</b>	<b>328</b>	<b>100.0%</b>

In Fall 2013, 676 entering full-time, first-time-in-college freshmen declared that they were seeking baccalaureate degrees. From this group, 328 students (48.5%) were awarded baccalaureate degrees by August 2019.

**Table 29. Student Headcount by Registration Type**

Type	Fall 2015		Fall 2016		Fall 2017		Fall 2018		Fall 2019		Change 2015-19	
	Head	Percent	Head	Percent	Head	Percent	Head	Percent	Head	Percent	N	Percent
Returning	2364	61.2%	2221	58.8%	2083	55.8%	2006	55.0%	1997	56.2%	-367	-15.5%
New Freshmen	638	16.5%	564	14.9%	598	16.0%	593	16.3%	483	13.6%	-155	-24.3%
Readmitted	44	1.1%	51	1.3%	25	0.7%	35	1.0%	27	0.8%	-17	-38.6%
Transient/Special	361	9.3%	495	13.1%	532	14.2%	590	16.2%	601	16.9%	240	66.5%
High School	21	0.5%	15	0.4%	64	1.7%	94	2.6%	158	4.4%	137	652.4%
Transfer	370	9.6%	362	9.6%	359	9.6%	286	7.8%	237	6.7%	-133	-35.9%
First Time Master's	48	1.2%	58	1.5%	64	1.7%	35	1.0%	42	1.2%	-6	-12.5%
First Time Doctoral	15	0.4%	13	0.3%	11	0.3%	9	0.2%	9	0.3%	-6	-40.0%
<b>Total</b>	<b>3861</b>	<b>100.0%</b>	<b>3779</b>	<b>100.0%</b>	<b>3736</b>	<b>100.0%</b>	<b>3648</b>	<b>100.0%</b>	<b>3554</b>	<b>100.0%</b>	<b>-307</b>	<b>-8.0%</b>

**Table 30. Student FTE by Registration Type**

Registration Type	Fall 2015		Fall 2016		Fall 2017		Fall 2018		Fall 2019		Change 2015-19	
	Head	Percent	Head	Percent	Head	Percent	Head	Percent	Head	Percent	N	Percent
Returning	2181	66.5%	2029	65.6%	1906	63.5%	1873	63.9%	1851	66.1%	-331	-15.2%
New Freshmen	645	19.6%	566	18.3%	600	20.0%	604	20.6%	486	17.4%	-159	-24.6%
Readmitted	23	0.7%	33	1.1%	16	0.5%	24	0.8%	18	0.6%	-5	-20.7%
Transient/Special	73	2.2%	106	3.4%	109	3.6%	121	4.1%	145	5.2%	72	98.1%
High School	5	0.1%	3	0.1%	17	0.6%	28	1.0%	59	2.1%	54	1140.4%
Transfer	313	9.5%	307	9.9%	303	10.1%	250	8.5%	203	7.3%	-110	-35.1%
First Time Master's	31	0.9%	39	1.3%	43	1.4%	25	0.8%	29	1.0%	-2	-4.9%
First Time Doctoral	12	0.4%	10	0.3%	9	0.3%	8	0.3%	8	0.3%	-4	-34.9%
<b>Total</b>	<b>3282</b>	<b>100.0%</b>	<b>3094</b>	<b>100.0%</b>	<b>3002</b>	<b>100.0%</b>	<b>2933</b>	<b>100.0%</b>	<b>2798</b>	<b>100.0%</b>	<b>-484</b>	<b>-14.8%</b>

**Table 31. Student Headcount by Race and Ethnicity**

Race / ethnicity	Fall 2015		Fall 2016		Fall 2017		Fall 2018		Fall 2019		Change 2015-19	
	Head	Percent	Head	Percent	Head	Percent	Head	Percent	Head	Percent	N	Percent
Hispanic	107	2.8%	126	3.3%	156	4.2%	204	5.6%	210	5.9%	103	96.3%
Am Ind/Alaskan	21	0.5%	23	0.6%	18	0.5%	25	0.7%	21	0.6%	0	0.0%
Black	342	8.9%	306	8.1%	296	7.9%	278	7.6%	262	7.4%	-80	-23.4%
White	3177	82.3%	3101	82.1%	3000	80.3%	2835	77.7%	2754	77.5%	-423	-13.3%
Asian	94	2.4%	75	2.0%	72	1.9%	68	1.9%	73	2.1%	-21	-22.3%
Nat HI / OPI	3	0.1%	2	0.1%	4	0.1%	15	0.4%	3	0.1%	0	0.0%
Two or more	63	1.6%	68	1.8%	100	2.7%	118	3.2%	126	3.5%	63	100.0%
Unknown	54	1.4%	78	2.1%	90	2.4%	105	2.9%	105	3.0%	51	94.4%
<b>Total</b>	<b>3861</b>	<b>100.0%</b>	<b>3779</b>	<b>100.0%</b>	<b>3736</b>	<b>100.0%</b>	<b>3648</b>	<b>100.0%</b>	<b>3554</b>	<b>100.0%</b>	<b>-307</b>	<b>-8.0%</b>

Sources for these tables are census date HEPC files.  
Data are for credit students only.

**Table 32. Shepherd University FTE by Department and Instructor**

Dept	L_name	F_name	Faculty UG FTE	Student UG FTE	UG S/F Ratio	Faculty G FTE	Student G FTE	G S/F Ratio
0000	ANDERSON	SCOTT	.08	.67	8.00	.	.	.
	BANKHURST	BENJAMIN	.25	2.20	8.80	.	.	.
	BELHAJ SOULAMI	FADELA	.08	.33	4.00	.	.	.
	BRASHER	SALLY	.25	2.60	10.40	.	.	.
	COPNEY	CYNTHIA	.08	.93	11.20	.	.	.
	ELLZEY	MARY	.25	2.60	10.40	.	.	.
	FRANKS	JULIA	.08	.67	8.00	.	.	.
	GROSS	EMILY	.08	1.00	12.00	.	.	.
	HALLY	RACHEL	.08	1.40	16.80	.	.	.
	HANRAHAN	HEIDI	.25	2.20	8.80	.	.	.
	HOLLIDAY	SHANNON	.25	2.87	11.47	.	.	.
	MARKEY	MELISSA	.17	1.73	10.40	.	.	.
	MCPHERSON	STEPHEN	.08	.60	7.20	.	.	.
	MCPHERSON-WILDE	RHONDA	.08	.53	6.40	.	.	.
	NIXON	TIMOTHY	.25	3.40	13.60	.	.	.
	NUREDINOSKI	YILDIZ	.17	1.53	9.20	.	.	.
	PEREGO	ELIZABETH	.25	3.40	13.60	.	.	.
	REICH	CHRISTINA	.08	1.07	12.80	.	.	.
	RICKETTS	MICHELLE	.17	1.73	10.40	.	.	.
	SANTANA	BRIAN	.17	2.27	13.60	.	.	.
	STAR	YIN	.17	1.80	10.80	.	.	.
	WILLIAMS-MCNAME	HANNAH	.08	.73	8.80	.	.	.
	Subtotal dept		3.42	36.27		.	.	
ACCT	FILES	MICHELLE	1.00	17.40	17.40	.	.	.
	VANCE	CYNTHIA	1.00	13.80	15.87	.	.	.
	WEIDINGER	ALOIS	.75	14.40	18.80	.	.	.
	Subtotal dept		2.75	45.60		.	.	
BADM	AYTAC	BERRIN	.	.	.	.50	4.50	9.00
	BARNETT	ANDRO	.	.	.	.25	2.25	9.00
	DAILEY	MICHAEL	.75	11.40	15.20	.	.	.
	DIXON	MICHAEL	.50	10.40	20.80	.25	4.50	18.00
	DOVEL	JAMES	.75	13.20	17.60	.25	3.25	13.00

Fall 2019: SU FTEs by Department

Dept	L_name	F_name	Faculty UG FTE	Student UG FTE	UG S/F Ratio	Faculty G FTE	Student G FTE	G S/F Ratio
	FLORA	JENNIFER	.50	8.80	17.60	.	.	.
	FRYE	HOLLY	.25	2.00	8.00	.	.	.
	GOOLSBY	CAROL	1.00	13.40	13.40	.	.	.
	GROSS	DAVID	.50	7.80	15.60	.	.	.
	HILLMAN	DONALD	.	.	.	.50	3.00	6.00
	ISHERWOOD	ALEX	.	.	.	.50	2.75	5.50
	LARSON	LINDSEY	.50	9.60	19.20	.	.	.
	LEGGETT	LANA	.	.	.	.25	2.00	8.00
	LYNCH	MICHAEL	.50	6.20	12.40	.25	3.75	15.00
	MANDZIK	AMANDA	.25	3.60	14.40	.	.	.
	MARTZ	WILLIAM	.	.	.	.50	6.75	13.50
	REID	KATHLEEN	.25	7.40	29.60	.	.	.
	SAM	JANINE	.75	12.00	16.00	.	.	.
	SANDSTROM	DIRK	.	.	.	.50	1.25	2.50
	SCALES	CINDA	1.00	11.40	11.40	.	.	.
	SHERWOOD	PATRICIA	.25	1.60	6.40	.	.	.
	TOUHIDI	BEHZAD	.50	4.80	9.60	.	.	.
	WEIDINGER	ALOIS	.	.	.	.25	1.25	5.00
	WEST	JIMMIE	.25	1.80	7.20	.25	3.25	13.00
	WORDEN	TRICIA	.25	4.60	18.40	.	.	.
	Subtotal dept		8.75	130.00		4.25	38.50	
BIOL	AMSBERRY	LINDSAY	.67	11.47	17.20	.	.	.
	CAMPANY	COURTNEY	1.00	10.67	10.67	.	.	.
	CONLEY	RUTH	1.00	11.47	10.00	.	.	.
	GILKERSON	JONATHAN	1.17	15.07	12.40	.	.	.
	HENDRICKSON-LAM	SHER	.67	9.60	14.40	.	.	.
	HULSE	JONATHAN	.67	12.53	18.80	.	.	.
	MENKE	JAY	1.17	28.27	24.23	.	.	.
	NOLAN	COLLEEN	1.00	16.27	16.27	.	.	.
	PENNOCK	DAVID	.67	10.67	16.00	.	.	.
	ROBERTSON	LAURA	1.17	17.33	14.86	.	.	.
	SIPE	CONNOR	1.00	17.07	17.07	.	.	.
	STEFFEN	JOHN	1.19	11.93	10.85	.	.	.
	WING	DAVID	.83	9.60	11.52	.	.	.

Fall 2019: SU FTEs by Department

Dept	L_name	F_name	Faculty UG FTE	Student UG FTE	UG S/F Ratio	Faculty G FTE	Student G FTE	G S/F Ratio
Subtotal dept			12.19	181.93		.	.	
CAT	BENEFIEL	CHRISTIAN	.88	9.20	10.38	.	.	.
	BOGCESS	EVAN	1.00	12.00	12.80	.	.	.
	BRUNER	RICK	1.00	7.60	7.60	.	.	.
	CHARLOW	RENEE	.75	5.40	7.20	.	.	.
	CRAIG	JAMES	.75	20.20	26.93	.	.	.
	DARTT	KAY	.25	2.60	10.40	.	.	.
	EVANISKO	SONYA	.75	6.80	10.40	.	.	.
	FARMER	ROBERT	.75	8.60	10.80	.	.	.
	HAMANN	BRADFORD	1.00	12.80	12.80	.	.	.
	KAINEG	KRISTIN	1.00	11.80	12.93	.	.	.
	KUGLER	TRENT	.50	1.00	2.00	.	.	.
	MENDEZ	MICHAEL	.75	19.80	26.40	.	.	.
	MODLER	DAVID	.75	9.00	13.40	.	.	.
	SAINÉ	KAREN	1.13	2.40	2.16	.	.	.
	SMITH	RHONDA	.25	5.80	23.20	.	.	.
	WELTI	STEVEN	.50	5.80	11.60	.	.	.
Subtotal dept			12.00	140.80		.	.	
CHEM	BOZENKO	JOSEPH	.25	3.00	12.00	.	.	.
	COLE	JACQUELYN	1.00	14.80	14.80	.	.	.
	DAVID	SAMUEL	1.00	12.00	12.00	.	.	.
	DILELLA	DAN	.89	11.67	14.76	.	.	.
	HASSLER	KYLE	1.25	14.33	11.47	.	.	.
	KEARNEY	JENNIFER	.08	1.07	12.80	.	.	.
	KEARNEY	BRIAN	.08	1.40	16.80	.	.	.
	LI	MENGYANG	1.00	13.47	11.35	.	.	.
	WARBURTON	ROBERT	.42	10.93	26.24	.	.	.
Subtotal dept			5.97	82.67		.	.	
COMM	BLACK	THOMAS	.50	6.60	13.20	.	.	.
	CAMPBELL	TODD	.75	9.60	11.20	.	.	.
	FRIDGEN	PATRICIA	.50	7.80	15.60	.	.	.
	KUSHIN	MATTHEW	1.00	14.20	14.80	.	.	.
	LARSON-LEVINE	MONICA	1.00	12.13	12.13	.	.	.
	MASON	CECELIA	.25	2.40	9.60	.	.	.

Fall 2019: SU FTEs by Department

Dept	L_name	F_name	Faculty UG FTE	Student UG FTE	UG S/F Ratio	Faculty G FTE	Student G FTE	G S/F Ratio
	MCKAHAN	JASON	1.25	7.20	5.76	.	.	.
	MESSERLI	SHERRI	.50	6.00	12.00	.	.	.
	REILLY	CHERYL	.50	8.60	17.20	.	.	.
	UMSTEAD	MATTHEW	.50	4.60	9.20	.	.	.
	WILLIAMS	KEVIN	1.25	12.60	10.08	.	.	.
Subtotal dept			8.00	91.73		.	.	
CSME	ADAMS	KAREN	1.25	20.33	15.87	.	.	.
	AYTAC	BERRIN	.	.	.	.25	2.50	10.00
	BAILEY	WILLIAM	.50	8.80	17.60	.	.	.
	DESTEFANO	DAVID	.25	2.40	9.60	.	.	.
	GEESAMAN	MARY	.50	7.40	14.80	.	.	.
	GHAHREMANI	MOHAMMADREZA	.75	8.93	11.50	.	.	.
	GIL-ZAMBRANO	JOSE	.75	17.00	22.67	.	.	.
	GRANT	KAREN	.50	6.00	12.00	.	.	.
	GUZIDE	OSMAN	1.33	19.93	15.97	.	.	.
	LIAO	WEIDONG	1.17	17.93	15.37	.	.	.
	MARTIN	NICHOLAS	1.33	14.87	10.04	.	.	.
	MILLER	JASON	1.00	18.80	19.73	.	.	.
	MILLS	DONALD	.83	13.20	15.60	.25	.50	2.00
	MIRDAMADI	REZA	1.04	8.60	7.53	.	.	.
	MORTENSEN	YOONJA	1.33	22.67	17.00	.	.	.
	NAUMOV	PAVEL	1.00	13.20	13.20	.	.	.
	NELLES	FRANCOISE	1.25	20.27	16.21	.	.	.
	RAY	JEFFREY	.50	7.40	14.80	.	.	.
	SHAW	JOHN	.50	8.20	16.40	.25	1.00	4.00
	SIGDEL	RAM	1.25	16.53	13.23	.	.	.
	SNOOK	ROGER	.25	5.20	20.80	.	.	.
	SPURIA	LORI	.50	13.80	27.60	.	.	.
	WANG	QING	1.00	13.67	14.85	.	.	.
Subtotal dept			18.79	285.13		.75	4.00	
ECFN	BROPLEH	RUDOLPH	.75	15.40	20.53	.	.	.
	HOY	KYLE	1.25	20.20	13.10	.	.	.
	LYNCH	MICHAEL	.25	5.00	20.00	.	.	.
	MANDZIK	AMANDA	1.00	17.00	14.80	.	.	.

Fall 2019: SU FTEs by Department

Dept	L_name	F_name	Faculty UG FTE	Student UG FTE	UG S/F Ratio	Faculty G FTE	Student G FTE	G S/F Ratio
	REID	KATHLEEN	.25	4.00	16.00	.	.	.
	SAM	JANINE	.25	4.60	18.40	.	.	.
	SCHARMER	ROBERT	.50	7.40	14.80	.	.	.
	XIE	YUYING	1.00	12.20	11.33	.	.	.
Subtotal dept			5.25	85.80		.	.	
EDUC	ALLEN	JASON	.25	.80	3.20	.50	3.75	7.50
	BAKER	HELEN	2.33	15.33	8.80	1.00	2.00	2.00
	BURKE	DAWNE	.75	7.67	11.00	.25	1.50	6.00
	CABLE	DANETTE	.25	3.00	12.00	.	.	.
	COLE	TAUNA	.75	9.40	12.53	.	.	.
	GEESAMAN	MARY	.25	.60	2.40	.	.	.
	HANNAH	CORNEILA	1.00	12.40	12.50	.	.	.
	HARGROVE	DORI	1.00	12.20	12.20	.	.	.
	JARMAN	LOIS	.	.	.	.25	.50	2.00
	JOHNSON	LEANN	.83	7.67	9.20	.33	.50	1.50
	KALTENBAUGH	SUSAN	.08	.47	5.60	.	.	.
	KENNARD	DOUGLAS	1.13	8.40	7.47	.25	.25	1.00
	KEPNER	TERRESA	1.36	4.07	2.99	.	.	.
	LUTMAN	MARGARET	.25	.60	2.40	.25	.75	3.00
	MITCHELL	BELINDA	.50	5.20	10.40	.50	1.75	3.50
	MODLER	DAVID	.25	.60	2.40	.25	.25	1.00
	MORREALE	DIEDRE	.	.	.	.25	.25	1.00
	PENLAND	JENNIFER	.13	.40	3.20	.50	1.00	2.00
	SHETLER	SANDRA	.50	5.40	10.80	.	.	.
	STOTLER	TAMALA	.25	4.00	16.00	.	.	.
	SWARTZ	SUZANNE	.	.	.	.25	.25	1.00
	TUTTLE	JAMES	.58	4.40	7.54	.50	5.00	10.00
	WHITEHAIR-LOCHN	WENDY	.25	1.40	5.60	.25	1.75	7.00
Subtotal dept			12.69	104.00		5.33	19.50	
ENGL	BARRETT	JOYCE	.25	4.00	16.00	.	.	.
	BERENSCHOT	DENIS	1.00	14.80	14.67	.	.	.
	COUSINO	KATHERINE	.25	3.80	15.20	.	.	.
	ELLZEY	MARY	.50	3.96	7.93	.	.	.
	GADES	NAOMI	1.25	19.80	15.84	.	.	.

Fall 2019: SU FTEs by Department

Dept	L_name	F_name	Faculty UG FTE	Student UG FTE	UG S/F Ratio	Faculty G FTE	Student G FTE	G S/F Ratio
	GREEN	LEAH	.25	4.00	16.00	.	.	.
	HANRAHAN	HEIDI	.75	11.20	15.00	.	.	.
	JARMAN	LOIS	.25	.60	2.40	.	.	.
	KRANTZ	RACHEL	1.25	12.80	10.24	.	.	.
	LAWRENSON	WILLIAM	.75	11.00	14.67	.	.	.
	MASINI-LARSEN	FREDERICA	.75	10.20	13.60	.	.	.
	MEADS	RACHAEL	.	.	.	.25	1.00	4.00
	MESSENGER	CARRIE	.75	10.60	14.60	.	.	.
	NIXON	TIMOTHY	.75	6.60	9.20	.	.	.
	NUREDINOSKI	YILDIZ	.92	6.47	7.05	.	.	.
	PATE	JAMES	1.00	9.80	9.80	.	.	.
	REYNOLDS	NONA	.25	3.60	14.40	.	.	.
	SANDY	JULIA	.25	1.52	6.07	.	.	.
	SANTANA	BRIAN	1.00	16.60	16.60	.25	.25	1.00
	SCHIERA	ANTHONY	.75	6.80	9.07	.	.	.
	SHURBUTT	SYLVIA	.50	2.20	4.40	.50	1.00	2.00
	SLOCUM-SCHAFFER	STEPHANIE	.25	1.52	6.07	.	.	.
	SNIDER	CARA	.75	9.00	12.00	.	.	.
	STEVENS	VALERIE	1.00	10.20	10.20	.	.	.
	SUAREZ BUDENBEN	EVA-MARIA	1.00	10.00	9.33	.25	.25	1.00
	VEACH	KRISTI	.25	4.00	16.00	.	.	.
	WENGER	CHRISTY	.50	3.60	7.20	.25	.75	3.00
	WILSON	CHRISTOPHER	1.67	15.67	9.40	.	.	.
Subtotal dept			18.83	214.33		1.50	3.25	
ENPS	BEST	JASON	.67	10.40	15.60	.	.	.
	FEAGA	JEFFREY	.33	4.27	12.80	.	.	.
	GROFF	JEFFREY	.42	5.60	9.30	.	.	.
	MADISON	MARK	.25	2.40	9.60	.25	.25	1.00
	MELTON	CECILIA	1.00	19.27	19.05	.	.	.
	MURPHY	SYTIL	1.08	16.27	14.72	.	.	.
	SHAFFER	STEVEN	1.00	14.07	14.30	.	.	.
	SNYDER	EDWARD	1.00	12.00	12.60	.33	.33	1.00
	SPANOS	ANNITSA	.33	4.53	13.60	.	.	.
	VANCE	JOSHUA	.33	2.40	7.20	.	.	.



Fall 2019: SU FTEs by Department

Dept	L_name	F_name	Faculty UG FTE	Student UG FTE	UG S/F Ratio	Faculty G FTE	Student G FTE	G S/F Ratio
	VILA	PETER	.43	5.47	12.62	.	.	.
Subtotal dept			6.85	96.67		.58	.58	
HIST	BALLENTYNE	DANIEL	.25	6.00	24.00	.	.	.
	BANKHURST	BENJAMIN	.99	15.60	17.72	.25	.50	2.00
	BRASHER	SALLY	.50	7.60	15.20	.	.	.
	BROOMALL	JAMES	.50	5.20	10.40	.	.	.
	DEMER	JOHN	.25	2.60	10.40	.	.	.
	GORDON	DAVID	.50	6.00	12.00	.	.	.
	HENRIKSSON	ANDERS	.25	2.60	10.40	.	.	.
	MARJENHOFF	WILLIAM	.75	15.80	21.07	.	.	.
	MEADS	RACHAEL	.25	2.20	8.80	.	.	.
	PEREGO	ELIZABETH	.83	16.47	18.23	.	.	.
	POLLARD	ROBERT	.25	5.40	21.60	.	.	.
	PRIDDY	JEREMY	.75	16.80	22.40	.	.	.
	SANDY	JULIA	.73	12.80	16.00	.	.	.
	WYATT	JAMES	.50	4.40	8.80	.	.	.
Subtotal dept			7.30	119.47		.25	.50	
MUSC	ADAMS	KURTIS	.44	2.33	4.21	.	.	.
	BELL	KATHLEEN	.25	.60	2.20	.	.	.
	CAMERON	WAYNE	.17	.60	3.60	.	.	.
	CARLSON	RACHEL	.83	6.93	8.72	.	.	.
	CARTER	DANIEL	.17	.67	4.00	.	.	.
	COOK	MARK	1.17	10.47	8.55	.	.	.
	DROSINOS	DAVID	.25	1.33	5.40	.	.	.
	EVERS	BROOKE	1.00	5.53	5.22	.	.	.
	FEASLEY	WILLIAM	.08	.87	10.40	.	.	.
	GONZOL	DAVID	.83	8.80	9.15	.	.	.
	HIPPENSTEEL	SCOTT	.55	7.43	15.89	.	.	.
	HUENGER	THOMAS	.50	2.60	5.20	.	.	.
	KAZMIERCZAK	GRIFFITH	.17	.40	2.40	.	.	.
	KING	MARK	.08	.20	2.40	.	.	.
	KOCH	JEREMY	.25	.67	2.20	.	.	.
	LIAO	YU-HSUAN	.91	5.77	6.56	.	.	.
	MARTIN	JAMES	.08	.30	4.00	.	.	.

Fall 2019: SU FTEs by Department

Dept	L_name	F_name	Faculty UG FTE	Student UG FTE	UG S/F Ratio	Faculty G FTE	Student G FTE	G S/F Ratio
	MUNRO	ANNE	.33	.77	2.38	.	.	.
	NORRIS	KELTON	.17	.20	1.20	.	.	.
	OWEN	STEVEN	.33	.60	1.80	.	.	.
	PEREZ-MEJIA	CAMILO	.08	.20	2.40	.	.	.
	PETZOLD-CARPENT	SUSAN	.75	12.20	16.27	.	.	.
	POLONCHAK	RICHARD	.25	.47	1.87	.	.	.
	RENNINGER	LAURA	.25	3.00	12.00	.	.	.
	RHODES	ROBIN	.33	.53	1.33	.	.	.
	ROBINSON	ROBERT	.50	5.07	8.40	.	.	.
	ROMINE	EMILY	.08	.20	2.40	.	.	.
	SHOOK	GREGORY	.06	.10	1.60	.	.	.
	TUDOR	ROBERT	.25	.53	2.40	.	.	.
	WILDMAN	SIMON	.25	.47	2.00	.	.	.
Subtotal dept			11.36	79.83		.	.	
NURS	ALBRIGHT	CAROLYN	.42	10.67	25.60	.	.	.
	ANDERSON	CHARLOTTE	.67	4.53	6.80	.	.	.
	BURKEY	DORIS	.	.	.	1.14	6.25	5.49
	DUFFEY	TAMMY	.33	2.40	7.20	.	.	.
	FETTY	ANGELA	.67	19.47	29.20	.08	.08	1.00
	GALEN	LAURIE	.42	8.67	20.80	.	.	.
	GROVES	MICHAEL	.50	10.40	20.80	.58	5.08	8.71
	HANCOCK	MARY	.50	14.80	29.60	.42	3.08	7.40
	MAILEY	SHARON	.08	1.73	20.80	.25	.25	1.00
	RIFFE-SNYDER	KELLIE	.92	20.07	21.89	.25	2.25	9.00
	RINI	ELIZABETH	1.25	32.20	25.76	.08	.08	1.00
	SHERMAN	BARBARA	.	.	.	.25	2.50	10.00
	WATSON HUFFER	KELLY	.67	15.47	23.20	.50	2.33	4.67
Subtotal dept			6.42	140.40		3.56	21.92	
PSGS	AKOPIAN	MARAT	1.00	11.60	11.60	.	.	.
	BRANCH	JAMIN	.49	6.00	12.40	.	.	.
	DRUMEA	PETRU	.50	6.00	12.00	.	.	.
	FLEMING	MONICA	.50	10.20	20.40	.	.	.
	GREENE	SAMUEL	1.00	12.60	12.60	.	.	.
	GUIRGUIS	MAGED	.50	4.60	9.20	.	.	.

Fall 2019: SU FTEs by Department

Dept	L_name	F_name	Faculty UG FTE	Student UG FTE	UG S/F Ratio	Faculty G FTE	Student G FTE	G S/F Ratio
	HIKSON	DAVID	.25	4.60	18.40	.	.	.
	HOLTSLAG	AREND	1.25	9.00	7.73	.	.	.
	SCHARMER	ROBERT	.25	3.80	15.20	.	.	.
	SCOTT	GRAHAM	.25	2.60	10.40	.	.	.
	SLOCUM-SCHAFFER	STEPHANIE	.58	7.73	13.26	.	.	.
Subtotal dept			6.57	78.73		.	.	
PSYC	DAILY	LARRY	1.58	14.67	9.40	.	.	.
	DOBISH	HEIDI	1.00	19.00	19.00	.	.	.
	GARLAND	JOHNNIE	.	.	.	.25	3.50	14.00
	GAROFALO	JASON	.50	11.60	23.20	.	.	.
	HOUSTON	SUZANNE	.50	5.80	11.60	.	.	.
	JACKSON	RHONDA	.13	.40	3.20	.	.	.
	LEVITAN	LINDSEY	1.42	15.87	7.43	.	.	.
	LOVELACE	CHRISTOPHER	.75	11.60	16.20	.	.	.
	LOVETT	DAVID	.	.	.	.25	2.50	10.00
	MCCAULEY-TOKACH	DEBRA	.25	5.00	20.00	.	.	.
	MERZ	JOSEPH	1.00	16.60	16.60	.	.	.
	MILLS	MARSHA	.25	5.80	23.20	.	.	.
	ROWE	KIMBERLY	.50	9.20	18.40	.	.	.
	SPENCER	SHANAN	.50	6.00	12.00	.	.	.
	STEVENS	RICHARD	.	.	.	.25	3.25	13.00
	WENDLE	ANN	.	.	.	.75	6.75	9.00
	WHITEHOUSE	EMILEIGH	.75	13.40	18.40	.	.	.
Subtotal dept			9.13	134.93		1.50	16.00	
RSES	BARNETT	ANDRO	2.50	19.40	11.30	.	.	.
	BATTS	BRITTANY	.50	11.60	23.20	.	.	.
	BOARDLEY	JASON	.50	9.60	19.20	.	.	.
	BOSLEY	CASSIE	.17	2.00	12.00	.	.	.
	CATER	MONTE	.25	1.40	5.60	.	.	.
	DUDASH	VALERIE	.08	.73	8.80	.	.	.
	ECKLEBERRY	JENNA	.25	1.87	7.47	.	.	.
	EGRESS	AMY	.75	8.40	11.20	.	.	.
	FILES	AMY	.25	4.60	18.40	.	.	.
	FLETCHER	ARNETTA	1.00	12.20	12.20	.	.	.

Fall 2019: SU FTEs by Department

Dept	L_name	F_name	Faculty UG FTE	Student UG FTE	UG S/F Ratio	Faculty G FTE	Student G FTE	G S/F Ratio
	GRAHAM	JESSICA	1.75	16.20	12.73	.	.	.
	HALL	MELISSA	1.25	14.00	9.10	.	.	.
	HESTER	EMILY	.25	2.80	11.20	.	.	.
	HIATT	TIRELL	.08	.47	5.60	.	.	.
	HOEKSTRA	ALEXANDER	.25	4.80	19.20	.	.	.
	HOVATTER	RHONDA	1.00	13.60	15.73	.	.	.
	KENDIG	STACEY	1.50	12.20	9.50	.	.	.
	KLINE	JOSHUA	.17	3.87	23.20	.	.	.
	LANE	SHATORA	.25	2.20	8.80	.	.	.
	LAWLESS	DESMOND	1.33	21.73	13.72	.	.	.
	LEGREID	ANN	.25	1.20	4.80	.	.	.
	LESLIE	MARISSA	.50	8.80	17.60	.	.	.
	LIVENGOOD	JENNIFER	.25	2.40	9.60	.	.	.
	MCCOOK	ERNEST	.25	2.80	11.20	.	.	.
	MILLER	JENNIFER	.83	12.67	15.43	.	.	.
	MILLER	MATTHEW	.25	1.60	6.40	.	.	.
	MYER	JACLYN	.25	4.40	17.60	.	.	.
	NAMOLIK	JUSTIN	.50	3.00	6.00	.	.	.
	OURI	HUSSAM	.25	3.00	12.00	.	.	.
	PIACQUADIO	LESLIE	.50	10.40	20.80	.	.	.
	PLACE	GREGORY	2.00	19.00	11.67	.	.	.
	SAMPSELL	ERIC	.25	5.00	20.00	.	.	.
	STAYMAN	BRANDY	.25	5.40	21.60	.	.	.
	TRACY	JULIA	1.25	8.40	7.73	.	.	.
	WILHELM	MARY JO KELL	.25	2.40	9.60	.	.	.
	WILLAUER	TRACY	.75	12.40	16.53	.	.	.
	WOLF	KARL	.25	4.20	16.80	.	.	.
Subtotal dept			22.92	270.73		.	.	.
SCCJ	ANTHONY	ROBERT	1.25	18.20	15.27	.	.	.
	COBIAN	CHRISTOPHER	.25	4.80	19.20	.	.	.
	DARBOE	MOMODOU	1.00	9.20	9.20	.	.	.
	DEWITT	AMY	.75	11.40	15.20	.	.	.
	FARRIS	PATRICK	.50	9.00	18.00	.	.	.
	HOFE	C	.25	1.80	7.20	.	.	.

Fall 2019: SU FTEs by Department

Dept	L_name	F_name	Faculty UG FTE	Student UG FTE	UG S/F Ratio	Faculty G FTE	Student G FTE	G S/F Ratio
	HOWARD-BOSTIC	CHIQUITA	1.00	12.20	15.33	.	.	.
	HULSE	CHARLES	1.00	17.80	14.53	.	.	.
	LEGREID	ANN	.25	1.60	6.40	.	.	.
	LEROI	MARTHA	.25	4.40	17.60	.	.	.
	LORENZETTI	RALPH	.25	2.00	8.00	.	.	.
	MARINO	EUGENE	.25	2.60	10.40	.	.	.
	PHILLIPS	FRANCINE	.25	4.20	16.80	.	.	.
	SNYDER	RICHARD	.25	3.00	12.00	.	.	.
	SPEAKER	HOMER	.25	3.40	13.60	.	.	.
	TOOMEY	KEITH	.25	2.60	10.40	.	.	.
	Subtotal dept		8.00	108.20		.	.	
SOWK	CLINE	CRAIG	.75	9.60	12.80	.	.	.
	CRAWLEY-WOODS	GERALDINE	1.00	10.53	10.53	.	.	.
	GREEN	KAREN	.75	6.27	6.80	.	.	.
	MANZANO	KELLI	.25	4.60	18.40	.	.	.
	MCCAULEY-TOKACH	DEBRA	.24	4.80	20.00	.	.	.
	MCCULLOUGH	PIPPA	.25	2.20	8.80	.	.	.
	REXRODE	TIFFANY	.25	3.60	14.40	.	.	.
	Subtotal dept		3.49	41.60		.	.	
	Grand Total		190.68	2468.83		17.72	104.25	