



November 2019

See all archived issues [HERE!](#)

### AROUND CAMPUS

- WISH awards 2019 grants to two community nonprofits and two Shepherd education initiatives. [READ MORE...](#)
- Agreements with Marshall University give students advanced degree pathways. [READ MORE...](#)
- Food pantry for students now open. [READ MORE...](#)
- Student from Pakistan attending Shepherd through State Department program. [READ MORE...](#)

For more Shepherd news:  
[CLICK HERE!](#)

### ALUMNI PROGRAMS



#### Alumni-Owned Businesses:

Do you own your own business? We would like to recognize you!  
Email

[kswayne@shepherd.edu](mailto:kswayne@shepherd.edu) with your name, class year, business name, and business address and we will send you one of the Alumni-Owned Business window clings pictured above.

Remember to send us back a picture of it in your business window and we'll share it on our social media pages!

### COLLEGE NEWS

#### College of Arts, Humanities, and Social Sciences

*Dr. Rob Tudor, Dean*

*Dr. Ann Marie Legreid, Associate Dean*  
[Webpage](#)

- Research by Dr. Rachel Carlson featured in international journal. [READ MORE...](#)
- Dr. Kushin publishes book on teaching social media. [READ MORE...](#)
- Dr. Arnetta Fletcher to be featured in video at national conference. [READ MORE...](#)

#### College of Business

*Dr. Ben Martz, Dean*

*Dr. Kathy Reid, Associate Dean*  
[Webpage](#)

- Dr. Cindy Vance '88 is co-founder of new CPA organization. [READ MORE...](#)
- Economics student Francisco Mitchell interns in Chicago with Invenergy. [READ MORE...](#)

#### College of Nursing, Education, and Health Sciences

*Dr. Sharon Mailey, Dean*  
[Webpage](#)

## Regional Communities:

A Regional Alumni Community is a Shepherd University alumni group within a specific geographical region that promotes personal and professional opportunities for lifelong connections to Shepherd University and to fellow alumni. Communities are led by active volunteers/Alumni Ambassadors who plan and promote activities and services meaningful to their unique community. Community activities include social, cultural, and educational events, community service projects, and networking opportunities.

**Groups have already formed! Check those out [HERE](#)...contact your area's Ambassador to get involved.**

**Don't see one in your area? Consider forming a group! Full details [HERE](#), or contact [Kim Hutto](#).**

## Online Career/Life Video Series...

**...volunteers wanted to be featured as experts in various fields and topics.**

Each video should be 45 minutes to 1 hour in length and will be filmed by the audio-visual staff on campus. These will be free for viewing for the Shepherd community through the SUAA YouTube channel.

**For more information or to volunteer, please contact Kim Hutto by phone (304-876-5157) or [email](#).**

Check out our [YouTube](#) channel, or [click here](#) for the Career/Life video series webpage.



- Dr. Desmond Lawless attends international sport conference in England. [READ MORE...](#)
- School of Education receives \$40K grant to continue partnership with Berkeley County Schools. [READ MORE...](#)

## College of Science, Technology, Engineering, and Mathematics

*Dr. Robert Warburton, Dean*  
[Webpage](#)

- Environmental studies students, faculty will use drones to help U.S. Forest Service. [READ MORE...](#)
- Environmental studies students enhance learning with a trip to Yellowstone. [READ MORE...](#)
- Students White and Meredith do well at European Innovation Academy in Turin, Italy. [READ MORE...](#)

## Ruth Scarborough Library and the Center for Teaching, Learning, and Instructional Resources

*Dr. Laura Renninger, Dean*  
[Webpage](#)

## School of Graduate and Professional Studies

*Dr. Richie Stevens, Dean*  
[Webpage](#)

## ALUMNI BENEFITS



As a Shepherd University alum, you may be eligible for a special discount on auto insurance from Nationwide.

## MEMBERSHIP



A Sustaining Membership is a level that is gained from an annual gift of \$35 that affords the member an official membership card, a free ticket to the Homecoming game, and a 10-visit punch pass to the Shepherd University Wellness Center.

Memberships run with the university's fiscal year (July 1-June 30).

**Join Now**



Shepherd University alumni and supporters get a discount on hotels throughout the country by using HotelStorm.

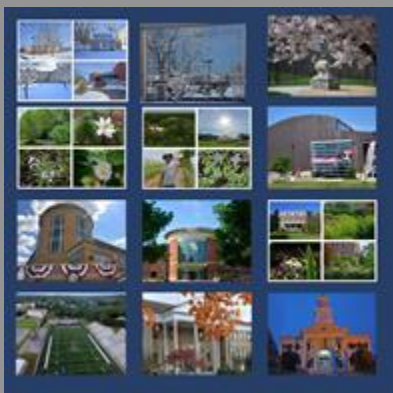
**Get more information on both of these programs [HERE!](#)**



New! Online job portal--Handshake!

Not only can you look for employment opportunities, but you can upload application materials (résumé, cover letters, and more) for review. [SIGN UP NOW!](#)

For questions, contact campus [Career Services](#).



### **2020 Scenes of Shepherd Calendar**

Supporting the Classified Employees Council Children's Scholarship Fund.

Can be purchased online [HERE!](#)

*Online form reflects a \$12 cost to cover shipping.*

Can be purchased in-store at these locations: Scarborough Library, SU Wellness Center, SU Student Center, SU Martinsburg Center, George Tyler Moore Center for the Study of the Civil War, Four Seasons Books of Shepherdstown, and the

Shepherdstown Visitor Center.

---

## Roaming Rams: Alumni Travel Program

We are very excited about the opportunity that travel presents to engage and interact with our alumni.

### NEXT TRIP AVAILABLE:

**CARIBBEAN CRUISE 2020**  
**7 night Royal Caribbean cruise on Allure of the Seas**  
*Check out the link below for full details on this trip.*

Watch our webpage, [www.shepherd.edu/suaa/roaming-rams-alumni-travel-program](http://www.shepherd.edu/suaa/roaming-rams-alumni-travel-program), and our Facebook and Twitter pages, @ShepherdAlumni, for announcements about more exciting excursions!

---

## BE RECOGNIZED

### GET IN THE MAGAZINE

Have you had a significant event happen in your professional life? Did you recently get engaged, married, or have an addition to your family? We would love to share in your happiness!

Submit information to Katie Gordon at [kswayne@shepherd.edu](mailto:kswayne@shepherd.edu)!

*Pictures are always welcome; 300 DPI. Please attach any to the same email.*

**Now taking spring 2020  
submissions!**

**Deadline is Monday, November 25**

*Are you not receiving your copy? See the bottom of the newsletter on how to update your contact information!*

**Check it out online at  
[www.shepherd.edu/publications](http://www.shepherd.edu/publications)!**



### SPECIAL RECOGNITION PROGRAMS

**We are now taking nominations for  
2020! Please read below and click  
the link for more details and  
nomination forms.**

#### **Outstanding Alumnus/a of the Year:**

The Outstanding Alumnus/a of the Year Award is an opportunity to recognize an alum for his/her dedication and volunteer commitments that have significantly enhanced the goals and

## ALUMNI HIGHLIGHT



Alumna Roxanne French '94 has created a nursing scholarship. The SU Foundation announces a deferred gift that will provide scholarship support for Shepherd nursing students into perpetuity. [READ MORE...](#)

mission of Shepherd University and the Shepherd University Alumni Association.

### **Finest Under 40:**

The Finest Under 40 program has been developed to recognize those younger alumni doing great things personally, professionally, and charitably!

*Outstanding Alumni of the Year and Finest Under 40 are both honored during Homecoming Weekend of their induction year.*

*Nominations are taken year-round!*

**[CLICK HERE](#) to find out more about each of these programs and to see the nomination criteria and forms.**

---

## SAVE THE DATE

### **"A Midsummers Night's Dream" presented by the Rude Mechanicals: Nov. 1-3 & 7-9**

Reynolds Hall - details [HERE!](#)

Nov. 1, 2, 8, and 9 at 7:30 p.m.; Nov. 3 and 10 at 3 p.m.; Nov. 7 at 8:30 p.m.  
Post-performance reception with cast meet & greet on November 9.

### **Agricultural Innovation Center Open House: Nov. 2**

Tabler Farm; 9 a.m. - 1 p.m.

Free and open to the public. Refreshments will be served. Tour the refurbished milk parlor/aquaponics lab and see drones and drone demonstrations. Also view the newly installed solar panels, honey bee observation hive, and cold season plants. More info [HERE!](#)

### **President's Lecture Series: Nov. 11**

Robert C. Byrd Center for Congressional History and Education Auditorium; 6:30 p.m.

"The War We Are In: Strategic Insights from America's New Cyber War College" with Thomas C. Wingfield. Free and open to the public. Check out the presenter's bios [HERE!](#)

### **Speak Story Series: Nov. 12**

Reynolds Hall; 7:30 p.m.

"Growing Up Is A Full-Time Job" by Bill Harley, storyteller and musician. \$12 at the door; free to full-time Shepherd student with Rambler ID. More Info [HERE!](#)